

# **L86** EVB User Guide

**GNSS Module Series**

Rev. L86\_EVB\_User\_Guide\_V1.0

Date: 2014-08-18



**Our aim is to provide customers with timely and comprehensive service. For any assistance, please contact our company headquarters:**

**Quectel Wireless Solutions Co., Ltd.**

Office 501, Building 13, No.99, Tianzhou Road, Shanghai, China, 200233

Tel: +86 21 5108 6236

Mail: [info@quectel.com](mailto:info@quectel.com)

**Or our local office, for more information, please visit:**

<http://www.quectel.com/support/salesupport.aspx>

**For technical support, to report documentation errors, please visit:**

<http://www.quectel.com/support/techsupport.aspx>

**GENERAL NOTES**

QUECTEL OFFERS THIS INFORMATION AS A SERVICE TO ITS CUSTOMERS. THE INFORMATION PROVIDED IS BASED UPON CUSTOMERS' REQUIREMENTS. QUECTEL MAKES EVERY EFFORT TO ENSURE THE QUALITY OF THE INFORMATION IT MAKES AVAILABLE. QUECTEL DOES NOT MAKE ANY WARRANTY AS TO THE INFORMATION CONTAINED HEREIN, AND DOES NOT ACCEPT ANY LIABILITY FOR ANY INJURY, LOSS OR DAMAGE OF ANY KIND INCURRED BY USE OF OR RELIANCE UPON THE INFORMATION. ALL INFORMATION SUPPLIED HEREIN IS SUBJECT TO CHANGE WITHOUT PRIOR NOTICE.

**COPYRIGHT**

THIS INFORMATION CONTAINED HERE IS PROPRIETARY TECHNICAL INFORMATION OF QUECTEL CO., LTD. TRANSMITTABLE, REPRODUCTION, DISSEMINATION AND EDITING OF THIS DOCUMENT AS WELL AS UTILIZATION OF THIS CONTENTS ARE FORBIDDEN WITHOUT PERMISSION. OFFENDERS WILL BE HELD LIABLE FOR PAYMENT OF DAMAGES. ALL RIGHTS ARE RESERVED IN THE EVENT OF A PATENT GRANT OR REGISTRATION OF A UTILITY MODEL OR DESIGN.

***Copyright © Quectel Wireless Solutions Co., Ltd. 2014. All rights reserved.***

# About the Document

## History

Revision	Date	Author	Description
1.0	2014-08-18	Bond SUN	Initial

Quectel  
Confidential

## Contents

About the Document.....	2
Contents.....	3
Table Index.....	4
Figure Index.....	5
<b>1 Introduction.....</b>	<b>6</b>
<b>2 Introduction to EVB Kit.....</b>	<b>7</b>
2.1. EVB Top and Bottom View.....	7
2.2. EVB Accessories.....	9
<b>3 Interface Application.....</b>	<b>10</b>
3.1. USB Interface.....	10
3.2. UART Interface.....	11
3.3. Antenna Interface.....	12
3.4. Switches and Buttons.....	13
3.5. Test Point.....	14
<b>4 EVB and Accessories.....</b>	<b>15</b>
<b>5 Install Device Driver.....</b>	<b>16</b>
<b>6 Start PowerGPS.....</b>	<b>17</b>
<b>7 Appendix A Reference.....</b>	<b>20</b>

## Table Index

TABLE 1: EVB BOTTOM VIEW .....	8
TABLE 2: EVB ACCESSORIES .....	9
TABLE 3: PINS OF UART PORT .....	11
TABLE 4: SWITCHES AND BUTTONS .....	13
TABLE 5: THE DESCRIPTION OF TEST POINTS .....	14
TABLE 6: DESCRIPTION OF POWERGPS WINDOW .....	18
TABLE 7: REFERENCE .....	20
TABLE 8: ABBREVIATIONS .....	20

Quectel  
Confidential

## Figure Index

FIGURE 1: EVB TOP VIEW .....	7
FIGURE 2: EVB BOTTOM VIEW .....	8
FIGURE 3: EVB ACCESSORIES .....	9
FIGURE 4: MICRO-USB INTERFACE .....	10
FIGURE 5: UART INTERFACE .....	11
FIGURE 6: ANTENNA INTERFACE .....	12
FIGURE 7: SWITCHES AND BUTTONS .....	13
FIGURE 8: TEST POINTS.....	14
FIGURE 9: EVB AND ACCESSORY EQUIPMENT.....	15
FIGURE 10: POWERGPS TOOL .....	17
FIGURE 11: COM PORT AND BAUD.....	17

Quectel  
Confidential

# 1 Introduction

This document defines and specifies the usage of L86 EVB (Evaluation Board). You can get useful information about L86 EVB and GPS demo tool from this document.

Quectel  
Confidential

# 2 Introduction to EVB Kit

## 2.1. EVB Top and Bottom View

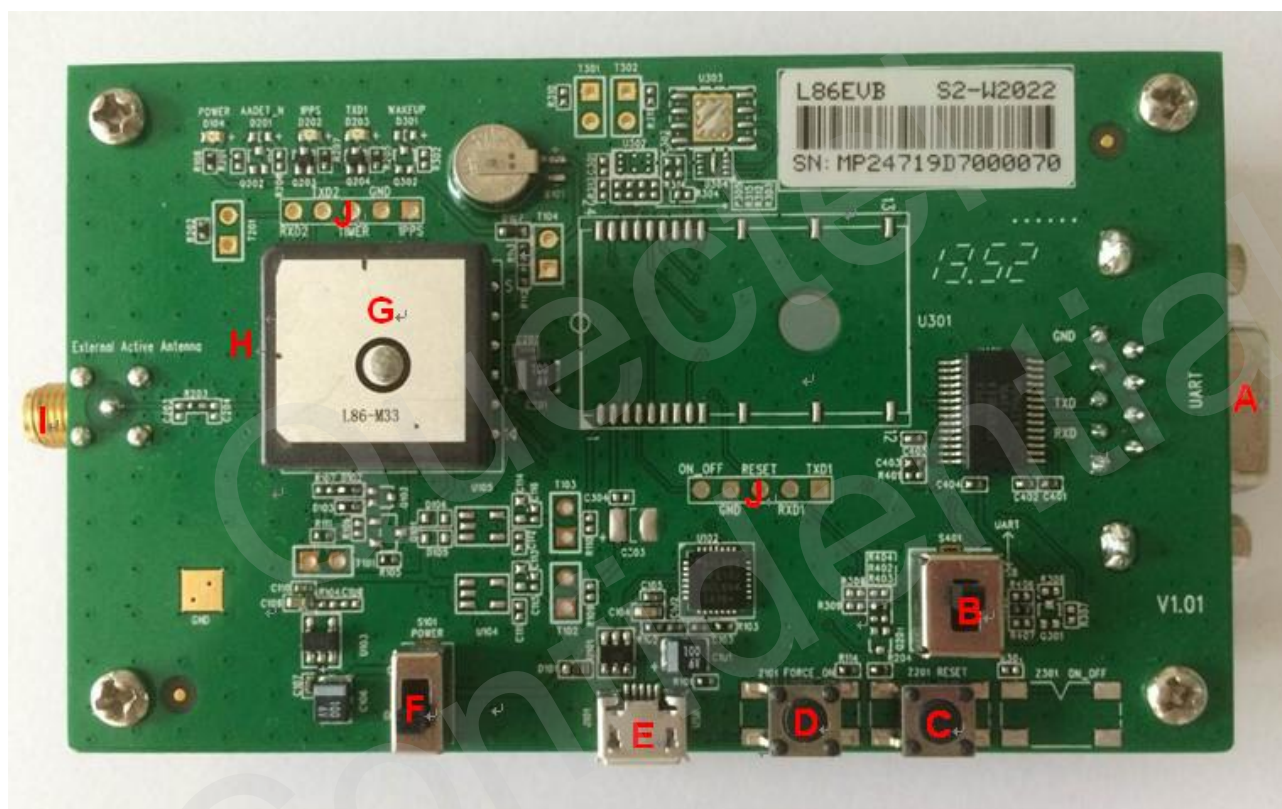


Figure 1: EVB Top View





Figure 2: EVB Bottom View

Table 1: EVB Bottom View

Index	Description
A	UART port
B	Serial port alternation switch
C	RESET button
D	FORCE_ON
E	Micro-USB port
F	POWER switch
G	PATCH antenna
H	L86 module
I	Active antenna interface
J	Test points

## 2.2. EVB Accessories



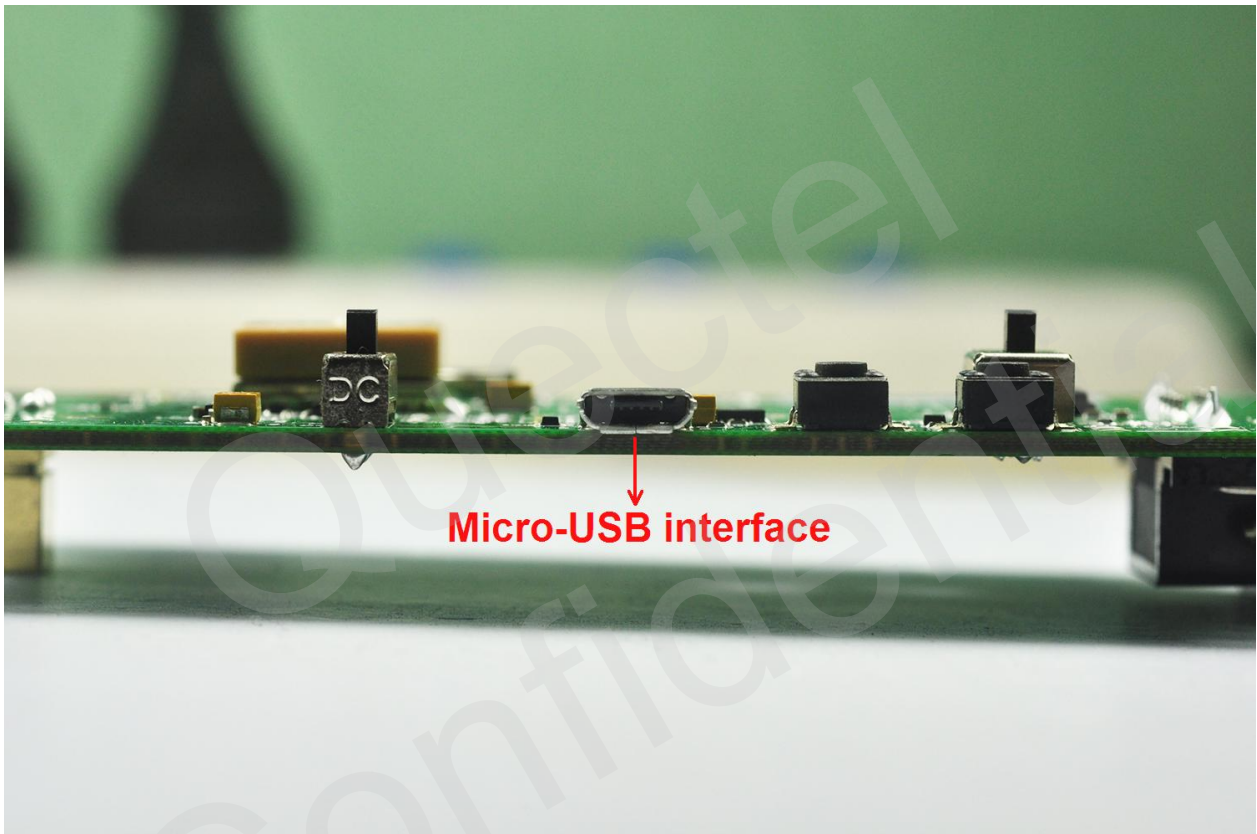
Figure 3: EVB Accessories

Table 2: EVB Accessories

Index	Description
A	USB cable

# 3 Interface Application

## 3.1. USB Interface



**Figure 4: Micro-USB Interface**

The main power is supplied via Micro-USB interface. Quectel provides two ways for data communication: Micro-USB and UART interface which are controlled by serial port alternation switch (S401). If you want to use UART in order to output NEMA, both RS232 and Micro-USB cable are necessary. So the easier way is to use Micro-USB cable which provides both the power and output NEMA. You can make alternation between UART port and Micro-USB interface via switch (S401).

### 3.2. UART Interface

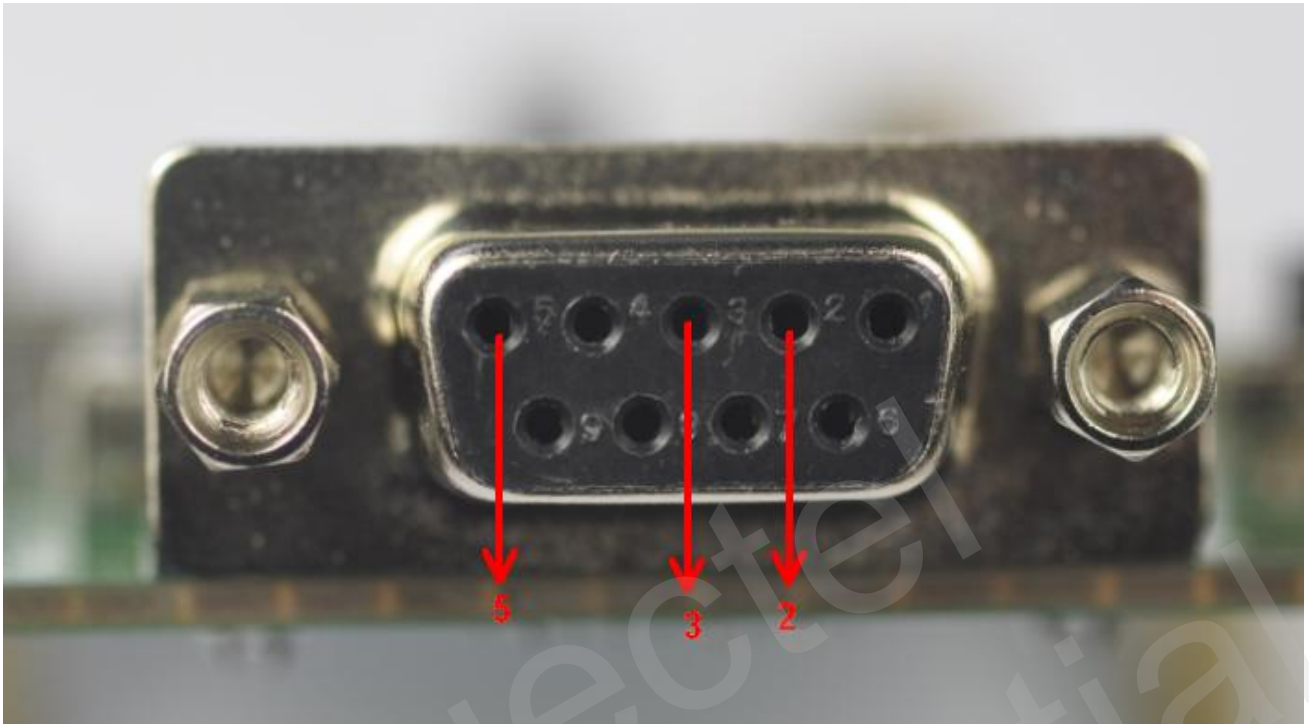


Figure 5: UART Interface

Table 3: Pins of UART Port

Pin	Signal	I/O	Description
2	RXD	I	Receive data
3	TXD	O	Transmit data
5	GND		GND

### 3.3. Antenna Interface



Figure 6: Antenna Interface

### 3.4. Switches and Buttons

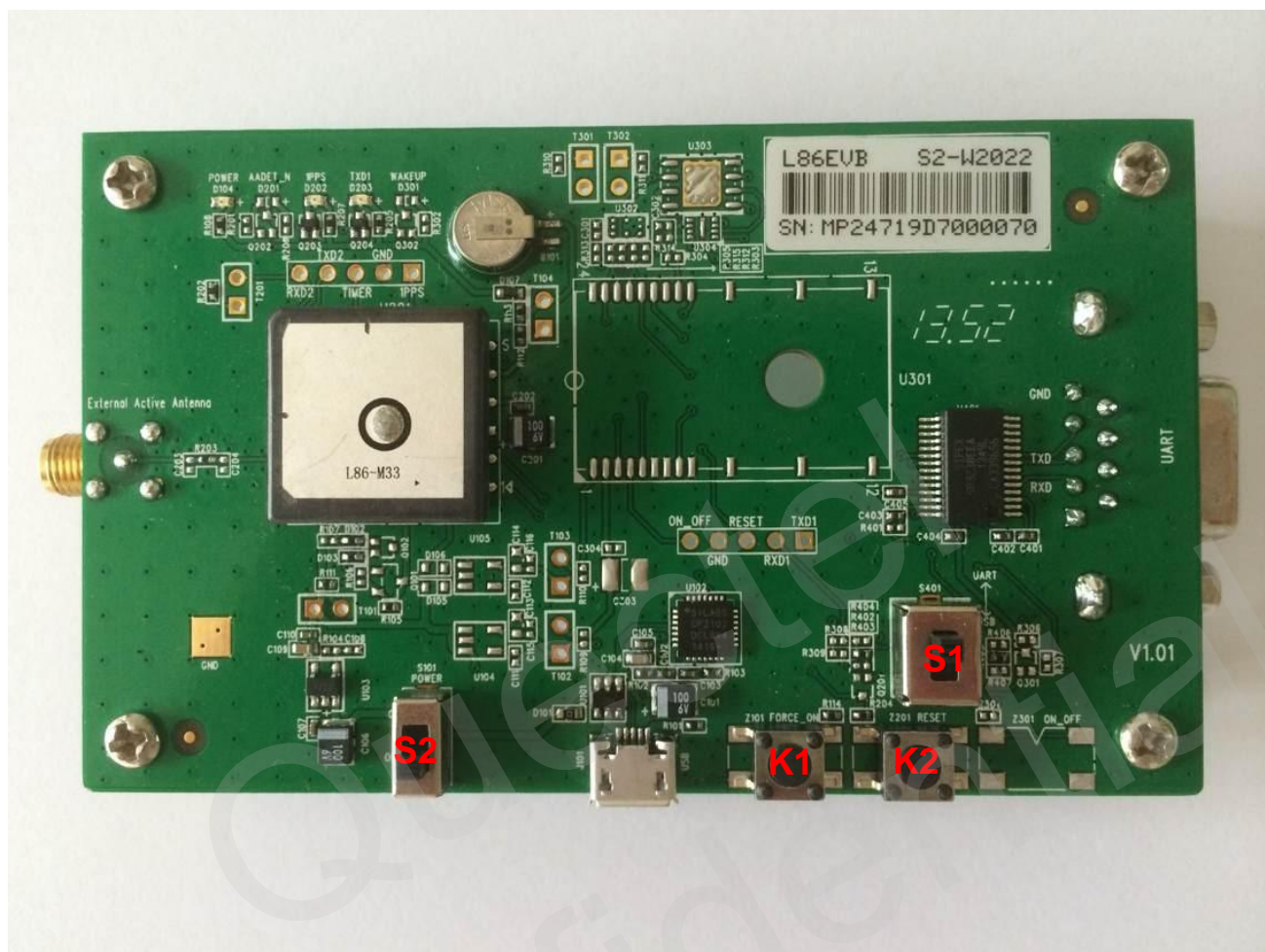


Figure 7: Switches and Buttons

Table 4: Switches and Buttons

Part	Name	I/O	Description
S1	Serial port alternation switch	I	Quectel EVB supplies two communicative ways: Micro-USB and UART which are controlled by switch.
S2	POWER	I	Control power supply via Micro-USB.
K1	FORCE_ON	I	Logic high will force module to wake up from backup mode.
K2	RESET	I	Press and release this button, then the module will reset.

### 3.5. Test Point

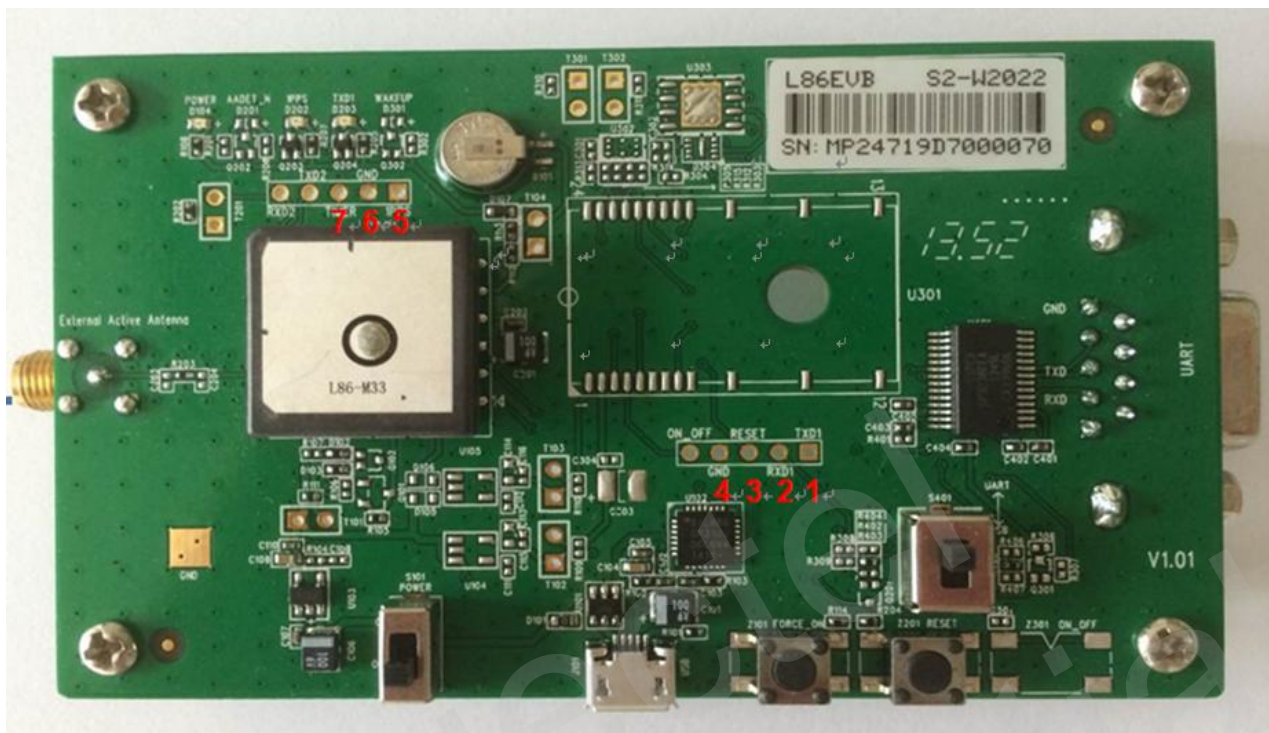


Figure 8: Test Points

Table 5: The Description of Test Points

Pin	Signal	I/O	Description
1	TXD1	O	Transmit data
2	RXD1	I	Receive data
3	RESET	I	System reset
4/6	GND		Ground
5	1PPS	O	1 pulse per second
7	TIMER	O	Logic high will force module to wake up from backup mode. Keep this pin open or pulled low before entering into backup mode. If unused, keep this pin open.

## 4 EVB and Accessories

The EVB and its accessories are equipped as shown in Figure 9.



Figure 9: EVB and Accessory Equipment

**NOTE**

The GNSS active antenna is not included in L86EVB-KIT. If you need it for your application, you can purchase separately from Quectel Sales Support.



## 5 Install Device Driver

Please note that you need to install the driver of Micro-USB when using Micro-USB for data communication. The driver has been stored in our FTP server. The driver of CP210x can also be downloaded from internet. The download path of our FTP server is shown as below:

**Overseas customer:** */d:/FTP/OC/Overseas\_Technical/Overseas\_Module Official Documents/GNSS Module/Common/04 Tool Kit/ GNSS\_EVB\_Micro-USB\_Driver\_CP210x.*

**Domestic customer:** */d:/FTP/CC/Domestic\_Technical/Domestic\_Module Official Documents/GNSS Module/Common/04 Tool Kit/ GNSS\_EVB\_Micro-USB\_Driver\_CP210x.*

Quectel  
Confidential

# 6 Start PowerGPS

The PowerGPS version is V2.2.0. The PowerGPS tool can help user to view the status of GPS receiver conveniently. When the tool is opened, the following window will be displayed:

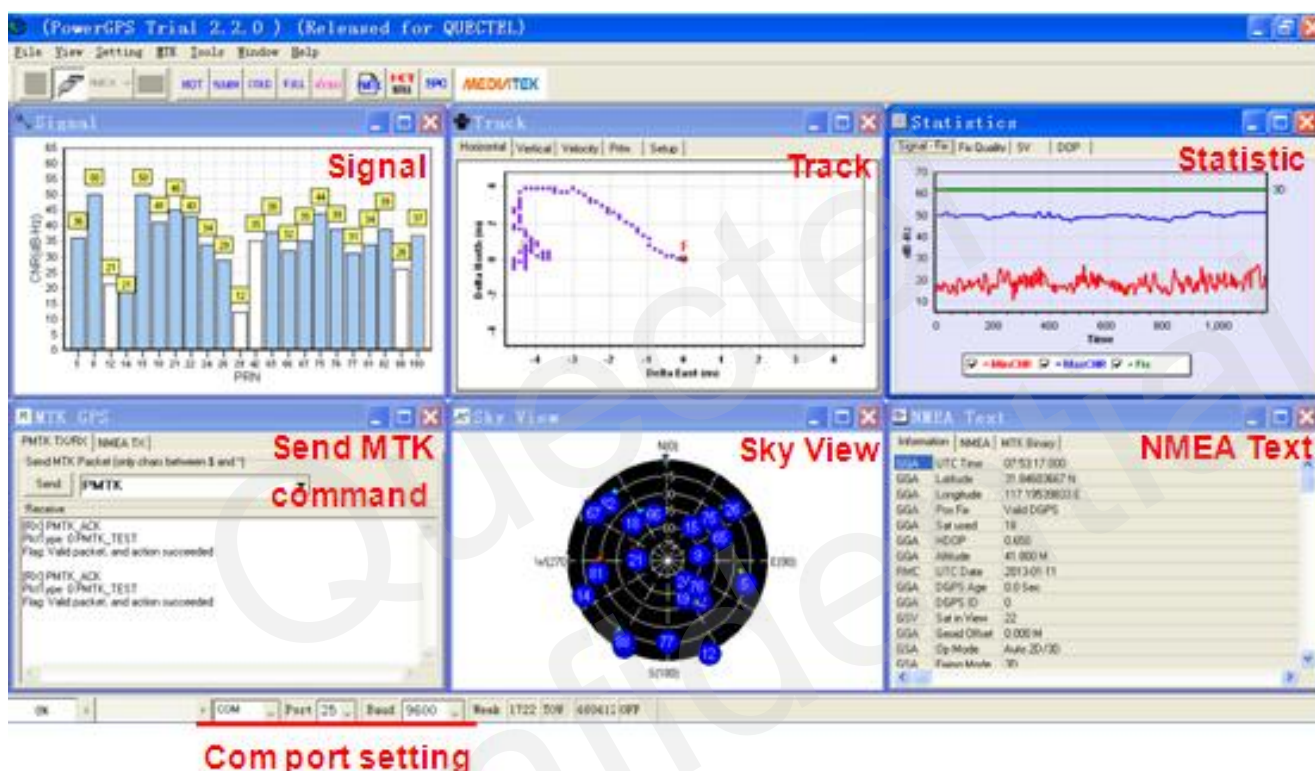


Figure 10: PowerGPS Tool


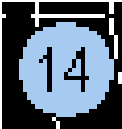
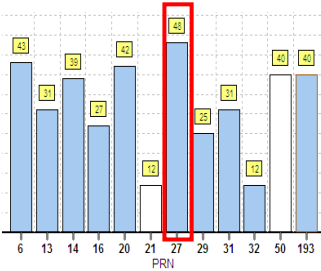
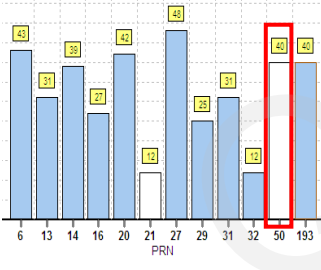
After EVB accessories are assembled, turn on the module and start up the PowerGPS. Select a correct COM port and baud rate (L86 module supports 9600bps by default), then click the button “Create Connection”.



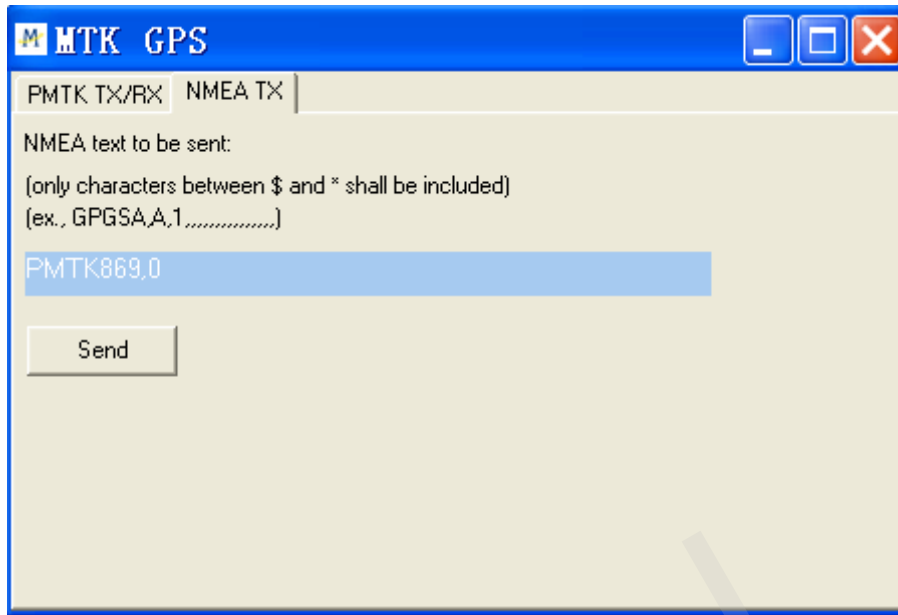
Figure 11: COM Port and Baud

From the PowerGPS window, user can view CNR message, time, position, speed, precision and so on. Descriptions are listed in Table 6.

**Table 6: Description of PowerGPS Window**

Icon	Description																								
	SV with PRN 20. If the position of SV is near to the centre of the Sky View, the elevation angle of SV is close to 90°. Dark blue means this satellite is in tracking.																								
	Light blue means this satellite is not in tracking.																								
	The CNR of PRN 27 is 48dB/Hz. Light blue column means the navigation data of this satellite is in use.																								
	The CNR of PRN 50 is 40dB/Hz. White column means the navigation data of this satellite is not in use.																								
<table border="1"> <tbody> <tr><td>UTC Time</td><td>08:54:07.000</td><td>UTC time</td></tr> <tr><td>Latitude</td><td>31.84580167 N</td><td>Latitude degree</td></tr> <tr><td>Longitude</td><td>117.19548500 E</td><td>longitude degree</td></tr> <tr><td>Pos Fix</td><td>Valid DGPS</td><td>Positing fix</td></tr> <tr><td>Sat used</td><td>17</td><td>The number of used satellites</td></tr> <tr><td>HDOP</td><td>0.630</td><td>Horizontal Dilution of Precision</td></tr> <tr><td>Altitude</td><td>16.200 M</td><td>Altitude based on WGS84 Datum</td></tr> <tr><td>UTC Date</td><td>2013-01-11</td><td>UTC date</td></tr> </tbody> </table>	UTC Time	08:54:07.000	UTC time	Latitude	31.84580167 N	Latitude degree	Longitude	117.19548500 E	longitude degree	Pos Fix	Valid DGPS	Positing fix	Sat used	17	The number of used satellites	HDOP	0.630	Horizontal Dilution of Precision	Altitude	16.200 M	Altitude based on WGS84 Datum	UTC Date	2013-01-11	UTC date	
UTC Time	08:54:07.000	UTC time																							
Latitude	31.84580167 N	Latitude degree																							
Longitude	117.19548500 E	longitude degree																							
Pos Fix	Valid DGPS	Positing fix																							
Sat used	17	The number of used satellites																							
HDOP	0.630	Horizontal Dilution of Precision																							
Altitude	16.200 M	Altitude based on WGS84 Datum																							
UTC Date	2013-01-11	UTC date																							
<table border="1"> <tbody> <tr><td>Fixing Mode</td><td>3D</td><td>Fix type: No-Fix, 3D or 2D SPS</td></tr> <tr><td>Sat Used</td><td>18 25 14 21 15 31</td><td>Used satellite</td></tr> <tr><td>PDOP</td><td>1.680</td><td>Position Dilution of Precision</td></tr> <tr><td>VDOP</td><td>1.410</td><td>Vertical Dilution of Precision</td></tr> <tr><td>Speed (m/s)</td><td>0.005</td><td>Speed of receiver</td></tr> </tbody> </table>	Fixing Mode	3D	Fix type: No-Fix, 3D or 2D SPS	Sat Used	18 25 14 21 15 31	Used satellite	PDOP	1.680	Position Dilution of Precision	VDOP	1.410	Vertical Dilution of Precision	Speed (m/s)	0.005	Speed of receiver										
Fixing Mode	3D	Fix type: No-Fix, 3D or 2D SPS																							
Sat Used	18 25 14 21 15 31	Used satellite																							
PDOP	1.680	Position Dilution of Precision																							
VDOP	1.410	Vertical Dilution of Precision																							
Speed (m/s)	0.005	Speed of receiver																							

You can send PMTK command by PowerGPS. The format of PMTK command only includes characters between '\$' and '\*', for example: PMTK869,0.



**Figure 12: MTK Command**

Quectel  
Confidential

# 7 Appendix A Reference

**Table 7: Reference**

SN	Document Name	Remark
[1]	Quectel_L86_Hardware_Design	L86 Hardware Design
[2]	Quectel_L86_Protocol_Specification	L86 Protocol Specification
[3]	Quectel_L86_Reference Design	L86 Reference Design

**Table 8: Abbreviations**

Abbreviation	Description
CNR	Carrier-to-Noise Ratio
GPS	Global Positioning System
GNSS	Global Navigation Satellite System
GLONASS	Global Navigation Satellite System (The Russian GNSS)
PPS	Pulse Per Second
PRN	Pseudorandom Noise
SPS	Standard Positioning Service
SV	Satellite Vehicle
UART	Universal Asynchronous Receiver & Transmitter
UTC	Universal Time Coordinated
WGS84	World Geodetic System 1984