

4

3

2

1

NOTES: UNLESS OTHERWISE SPECIFIED

1. DIMENSIONS IN PARENTHESIS ARE FOR REFERENCE ONLY AND NO TOLERANCE IS IMPLIED.

REVISION HISTORY			
REV	DESCRIPTION	DATE	APPROVED
F2	OUTLINE DIMENSIONAL DRAWING RELEASED	28FEB14	EA

Technical drawing of a GPS puck showing front, side, and back views with dimensions and callouts:

- Front view: Outer diameter $(\varnothing 2.69 [68.3])$.
- Side view: Dimensions $(.06 [1.6])$, $(.07 [1.8])$, and $(.75 [19.1])$.
- Back view: Features include a "CONNECTOR, TNC FEMALE ONLY", a "1111 LABEL W/ CUSTOM PRINT", "MAX TORQUE 10 ft-lbs", "5/8-18 UNC 2A THREAD", and a central hole with diameter $(\varnothing .21 [5.3])$. A label on the back reads: "MICRO PULSE ANTENNA - GPS, AIRBORNE PN: XXXXXX WO: XXXXXX".
- Callouts: "GASKET & WASHER REF" points to the side view.

UNLESS OTHERWISE SPECIFIED DUAL DIMENSIONING XX.Xin [XX.Xmm] FOR TOLERANCES NOT SPECIFIED USE: X.X in \pm .1 in, X.XX in \pm .01 in, X.XXX in \pm .005 in [X mm \pm 3 mm], [X.X mm \pm .3 mm], [X.XX mm \pm .13 mm] ANGULAR \pm 1', FRACTIONAL \pm 1/64	DRAWN IP DATE 2/27/2014	PCTEL, INC. 471 BRIGHTON DRIVE BLOOMINGDALE, IL 60108 PH. 630-372-6800 FAX. 630-372-8077
	CHECKED DATE	
THIRD ANGLE PROJECTION 	DESCRIPTION FG, L1 GPS PUCK, 26 dB, TNC FEMALE	
PCTEL PROPRIETARY DATA THE INFORMATION AND/OR DRAWINGS CONTAINED IN THIS DOCUMENT IS CONFIDENTIAL AND PROPRIETARY TO PCTEL, INC. AND MAY NOT BE USED, REPRODUCED, IN WHOLE OR IN PART, OR MODIFIED IN ANY WAY WITHOUT THE EXPRESS WRITTEN PERMISSION OF AN AUTHORIZED REPRESENTATIVE OF PCTEL, INC.		
DRAWING NO. ODD_1210FW		SIZE B SCALE 1:1 SHEET 1 OF 1

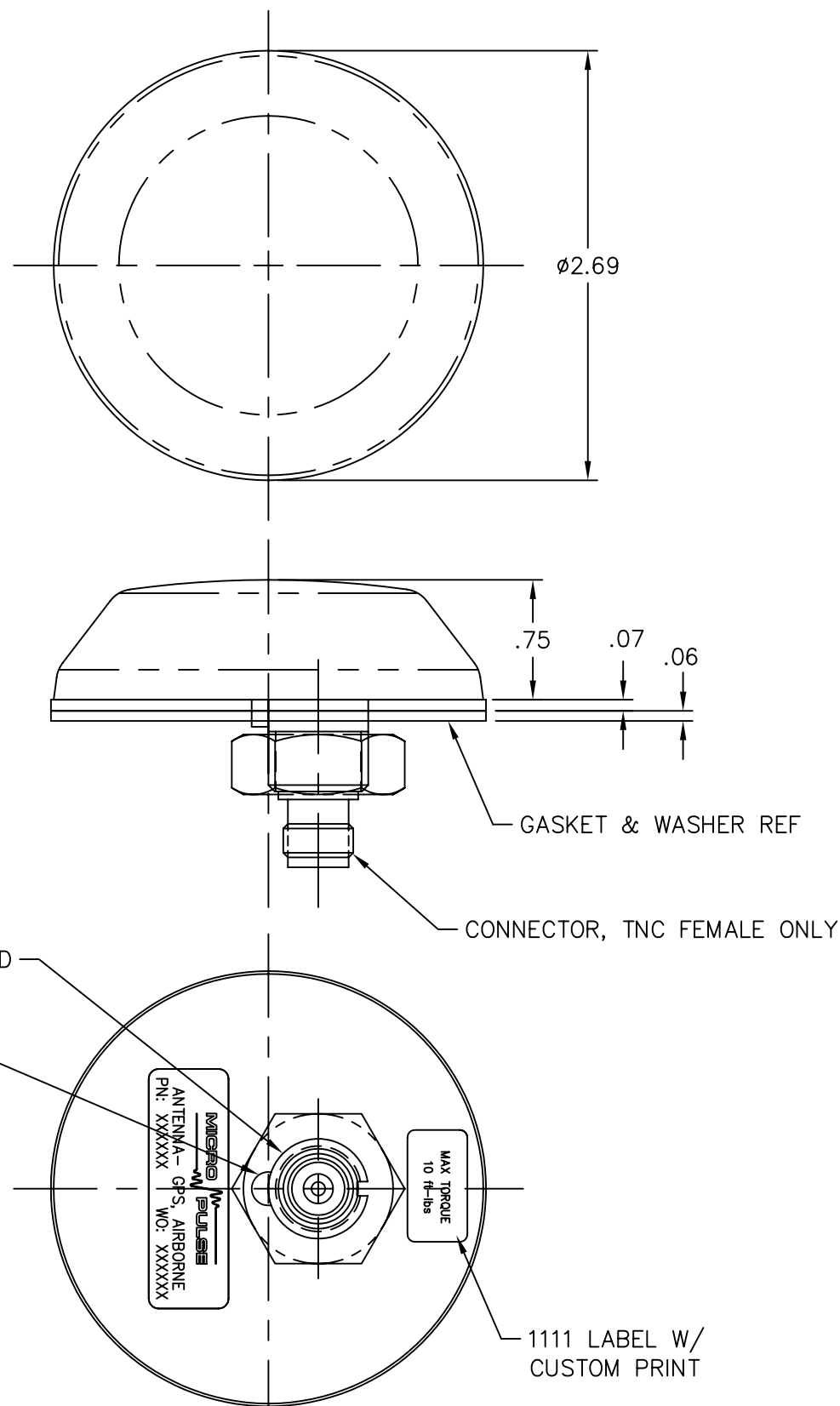
4

3


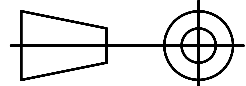
2

1

REVISIONS			
REV	DESCRIPTION	DRAWN/APPROVED/DATE	LOC
A	ADDED TORQUE LABEL [#100893]	FXG 20APR07	
E	UPDATED TO MATCH REV. LEVEL IN AGILE, JD, C02507 03MARCH09		



SPECIFICATIONS:	
GENERAL:	
1. PART NO.	1213FW
2. COLOR:	WHITE
3. WEIGHT:	3 OZ. NOMINAL
4. CONNECTOR:	TNC FEMALE
ENVIRONMENTAL:	
QUALIFIED TO RCTA/DO-160 (REF: MPI DOC. NO. 109)	
ANTENNA ELEMENT:	
1. FREQUENCY:	1575.42±10.0 MHz (GPS L1)
2. IMPEDANCE:	50 OHMS NOMINAL
3. VSWR:	1.5:1 MAXIMUM
4. POLARIZATION:	RIGHT HAND CIRCULAR
5. GAIN:	+4.5 dBiC NOM. @ ZENITH
6. DC GROUND:	YES
LOW NOISE AMPLIFIER:	
1. FREQUENCY:	1575.42±10.0 MHz (GPS L1)
2. IMPEDANCE:	50 OHMS NOMINAL
3. VSWR:	2.0:1 MAX
4. GAIN:	40dB TYPICAL
5. NOISE FIGURE:	2.5dB MAX
6. DC VOLTAGE:	5 TO 28 VDC THRU CONN
7. DC CURRENT @5V	40 mA TYP, 60 mA MAX
8. FILTERING:	DUAL CERAMIC FILTERS

UNLESS OTHERWISE SPECIFIED DIMENSION ARE IN INCHES	DRAWN	DATE	471 BRIGHTON DRIVE BLOOMINGDALE, IL 60108 PH. 630-372-6800 FAX. 630-372-8077
	CALIN POD	2/15/06	
FOR TOLERANCES NOT SPECIFIED USE: X.X - ± 0.1, X.XX - ± 0.01, X.XXX - ± 0.005 ANGULAR ± 2°	CHECKED:		
THIRD ANGLE PROJECTION	APPROVED:		
	MATERIAL:	DESCRIPTION GPS L1 AIRBORNE PUCK ANTENNAS	
	FINISH:	DRAWING NO. 1213FW	
PROPRIETARY DATA THE INFORMATION CONTAINED IN THIS DOCUMENT IS OF A PROPRIETARY NATURE. IT MAY NOT BE USED OR REPRODUCED WITHOUT EXPRESS WRITTEN PERMISSION OF MAXRAD INC., HANOVER PARK, IL 60133	SIZE		SHEET
	B	SCALE	