

## WADI one cable gland

K150-1xxx-zz

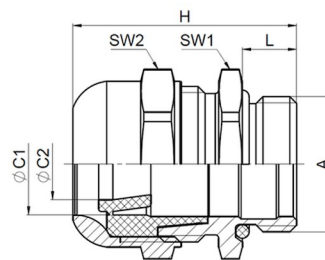
Dome nut	Brass CuZn39Pb3, nickel-plated
Sealing insert	TPE TPS
Gland body	Brass CuZn39Pb3, nickel-plated
O-ring	Nitrile rubber NBR
Connecting thread	metric, as per EN 60423



### Properties


- large-area sealing protects the cable
- high cable anchorage, partially type B
- wide sealing and clamping range
- the inner sealing ring can be removed easily for larger cables
- material of the sealing insert fulfills UL 94 HB
- high UV, ozone and weather resistance


Temperature range	-40 °C / +100 °C (dynamic)
Protection grade	IP66 / IP68 up to 15 bar (30 min.) / IP69
Test standard	EN 62444
VDE licence	40050445
DNV GL Certificate	TAE00003VR
Comment	details about test results - see annex



### Features

#### Connecting thread standard length

A	ØC	Ø C1	Ø C2	L	SW1	SW2	H	 VPE	Part No.
M12x1, 5	3 - 8	3 - 5	5 - 8	6,5	16	16	25,5	100	K150-1012-00
M16x1, 5	5 - 10,5	5 - 7,5	7,5 - 10,5	7,0	20	20	31,5	100	K150-1016-00
M20x1, 5	8 - 15	8 - 10,5	10,5 - 15	8,0	25	25	33	50	K150-1020-00
M25x1,	12,5 -	12,5 -	15,5 -	8,0	32	32	35,5	50	K150-1025-00

A	ØC	Ø C1	Ø C2	L	SW1	SW2	H	 VPE	Part No.
5	20,5	15,5	20,5						
M32x1, 5	17 - 25,5	17 - 20,5	20,5 - 25,5	9,0	36	36	40,5	25	K150-1032-00
M40x1, 5	24 - 33	24 - 29	29 - 33	9,0	45	45	43	10	K150-1040-00
M50x1, 5	31 - 42	31 - 37,5	37,5 - 42	10,0	55	55	47,5	5	K150-1050-00
M63x1, 5	40 - 53	40 - 46	46 - 53	10,0	70	70	53	5	K150-1063-00