

STRADA-T-DN

Beam for area lighting with shorter illumination distances. Optimized for CREE XT-E and XP-G2. Assembly with installation tape.

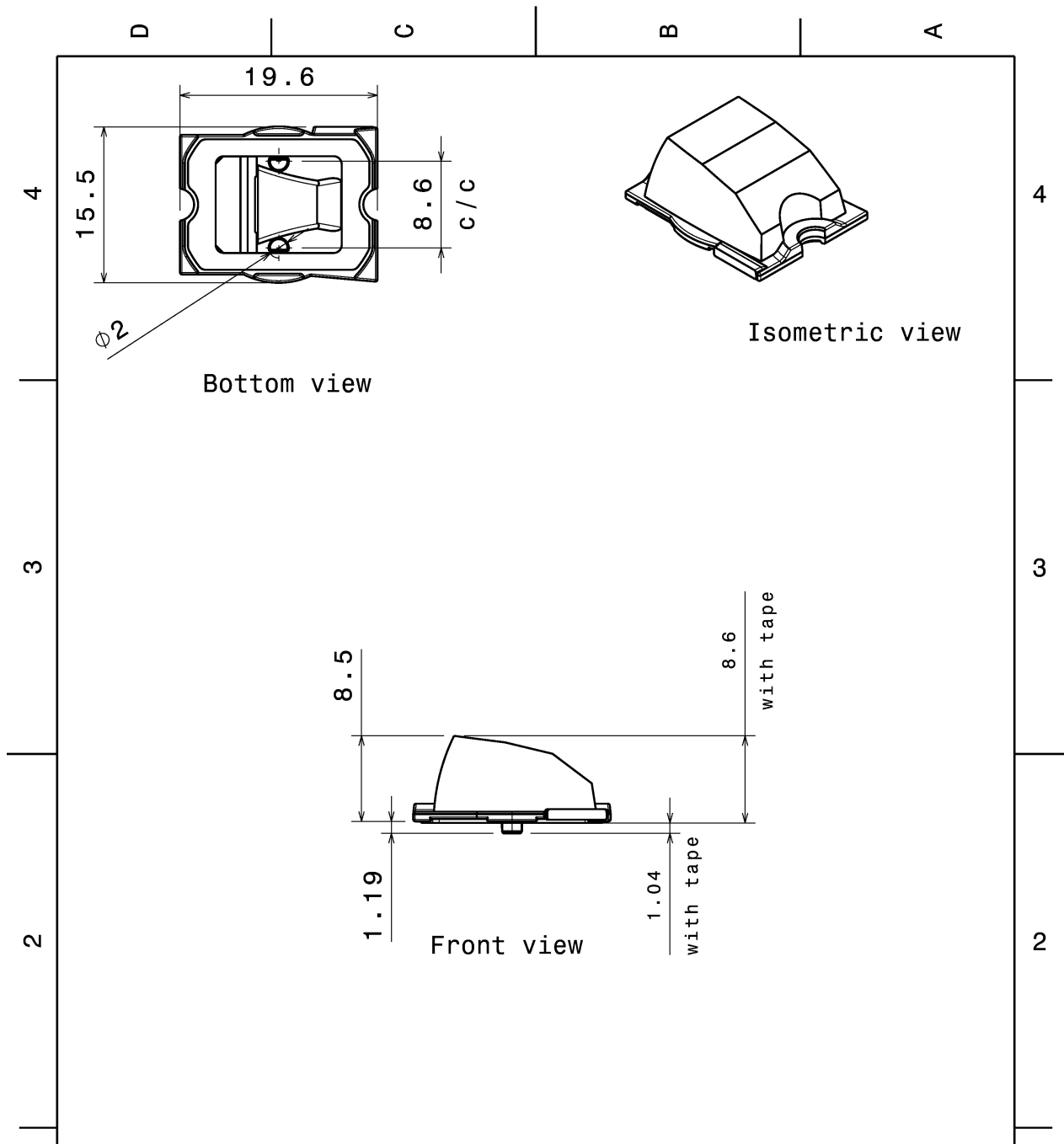
TECHNICAL SPECIFICATIONS:

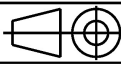
Dimensions	19.6 x 15.5 mm
Height	9.2 mm
Fastening	pin, tape, screw
Colour	clear
Box size	
Box weight	5.4 kg
Quantity in Box	3360 pcs
ROHS compliant	yes ⓘ



MATERIAL SPECIFICATIONS:

Component	Type	Material	Colour
STRADA-T-DN	Single lens	PMMA	clear
VOSU-WU-M-365-TAPE	Tape		

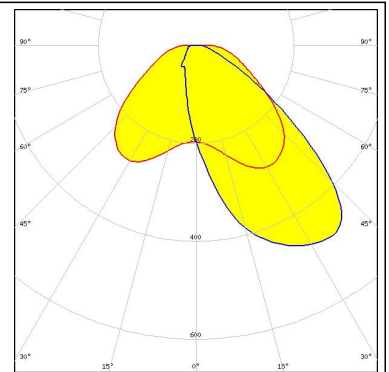


<p>Tolerances if not otherwise shown According to DIN ISO 2768-1 Linear measures: Up to 30mm class M, otherwise class C. According to DIN ISO 2768-2 Form and position: class L</p> <p>THIRD ANGLE PROJECTION: </p> <p>This drawing is the property of LEDiL Oy. It may not be reproduced, copied or communicated without a written agreement with LEDiL Oy."</p>	LEDiL		Ledil Oy Salorankatu 10 FIN 24240 SALO Finland	
	DRAWING TITLE			
	STRADA-T-DN			
	SIZE	PART NUMBER		
A4	-			
SCALE	2:1	WEIGHT	-	SHEET 1/1

PHOTOMETRIC DATA (MEASURED):

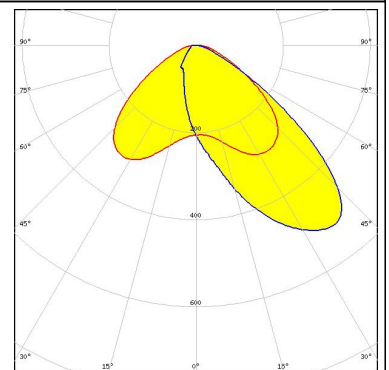
CREE

LED XT-E
FWHM Asymmetric
Efficiency 90 %
Peak intensity 0.500 cd/m
LEDs/each optic 1
Light colour White
Required components:



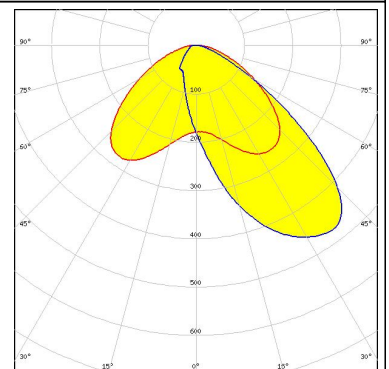
NICHIA

LED NVSW219D
FWHM Asymmetric
Efficiency 91 %
Peak intensity 0.540 cd/m
LEDs/each optic 1
Light colour White
Required components:



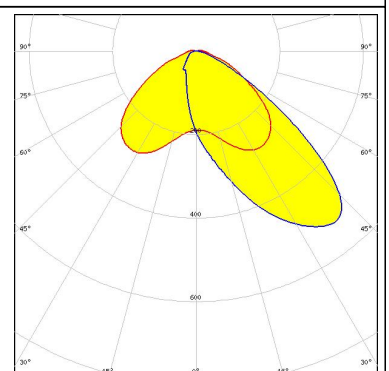
NICHIA

LED NVSW319B
FWHM Asymmetric
Efficiency 90 %
Peak intensity 0.510 cd/m
LEDs/each optic 1
Light colour White
Required components:

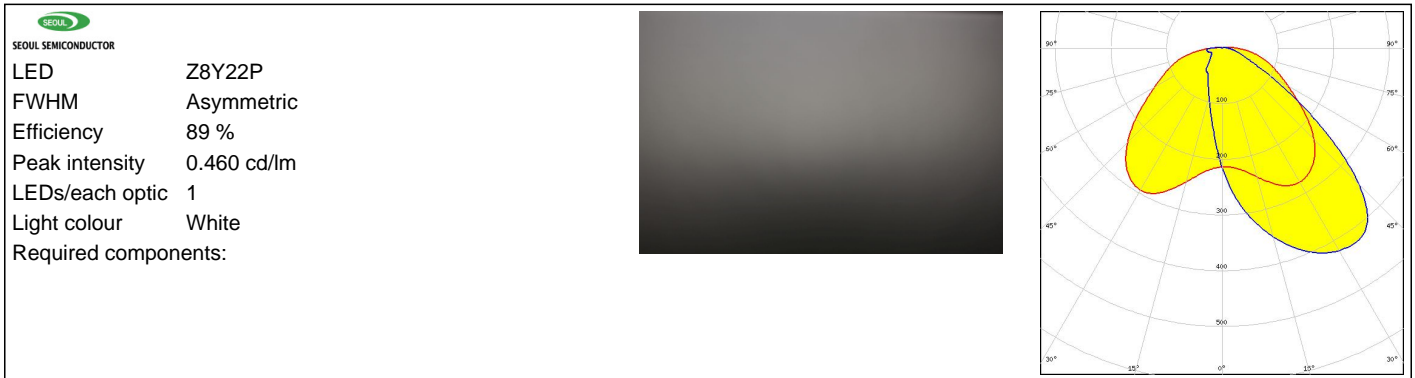


PHILIPS

LED Fortimo FastFlex 2x8 DS G3
FWHM Asymmetric
Efficiency 90 %
Peak intensity 0.540 cd/m
LEDs/each optic 1
Light colour White
Required components:



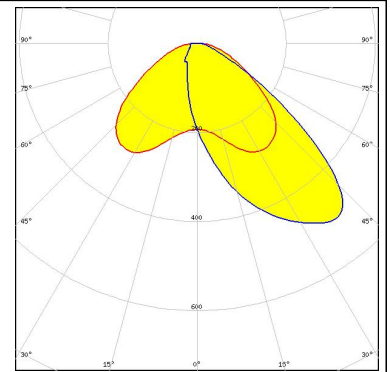
PHOTOMETRIC DATA (MEASURED):



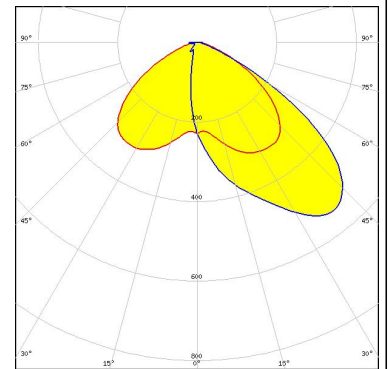
PHOTOMETRIC DATA (SIMULATED):



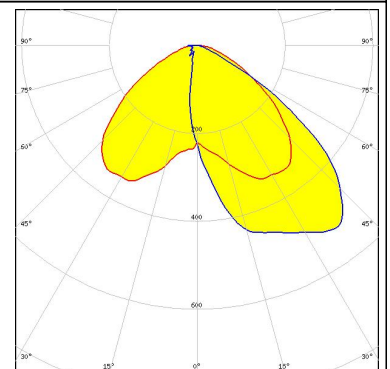
LED XP-G2
FWHM Asymmetric
Efficiency 87 %
Peak intensity cd/lm
LEDs/each optic 1
Light colour White
Required components:



LED NVSxx19B/NVSxx19C
FWHM Asymmetric
Efficiency 91 %
Peak intensity 0.550 cd/lm
LEDs/each optic 1
Light colour White
Required components:



LED OSCONIQ P 3737 (3W version)
FWHM Asymmetric
Efficiency 93 %
Peak intensity 0.570 cd/lm
LEDs/each optic 1
Light colour White
Required components:



GENERAL INFORMATION:

NOTE: The typical beam angle will be changed by different color, chip size and chip position tolerance. The typical total beam angle is the full angle measured where the luminous intensity is half of the peak value.

MATERIALS:

As part of our continuous research and improvement processes, and to ensure the best possible quality and availability of our products, LEDiL reserves the right to change material grades without notice.

PRODUCT DATA USER AGREEMENT AND DISCLAIMER:

The measured data in the provided downloadable LEDiL Product Datasheets and Mechanical 2D-Drawings is rounded and provided as reference for planning. LEDiL Oy's optical specifications have been verified by conducting performance testing of the products in accordance with the company's quality system. The reported data are averaged results of multiple measurements with typical variation. LEDiL Oy reserves the right to without prior notification make changes and improvements to its products.

LEDiL Oy assumes neither warranty, nor guarantee nor any other liability of any kind for the contents and correctness of the provided data. The provided data has been generated with highest diligence but the provided data may in reality not represent the complete possible variation range of all intrinsic parameters. Therefore, in certain cases a deviation from the provided data could occur.

LEDiL Oy reserves the right to undertake technical changes of its products without further notification which could lead to changes in the provided data. LEDiL Oy assumes no liability of any kind for the possible deviation from any provided data or any other damage resulting from the usage of the provided data.

The user agrees to this disclaimer and user agreement with the download or usage of the provided files.

LEDiL Oy

Joensuunkatu 13
FI-24240 SALO
Finland

LEDiL Inc.

228 West Page Street
Suite D
Sycamore IL 60178
USA

Local sales and technical support

[www.ledil.com/
where_to_buy](http://www.ledil.com/where_to_buy)

Shipping locations

Salo, Finland
Hong Kong, China

Distribution Partners

[www.ledil.com/
where_to_buy](http://www.ledil.com/where_to_buy)