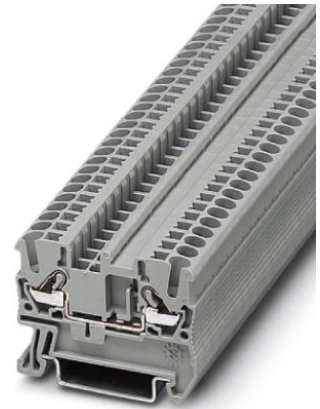


DT 2,5

Discontinued item


Order No.: 3034028



<http://eshop.phoenixcontact.de/phoenix/treeViewClick.do?UID=3034028>

Direct connection terminal block, Type of connection: Leg spring connection, Leg spring connection, Cross section: 0.2 mm² - 4 mm², AWG 24 - 12, Width: 5.2 mm, Color: gray, Mounting type: NS 35/7.5, NS 35/15

Commercial data

| | |
|--------------------------|---|
| GTIN (EAN) |  |
| sales group | A600 |
| Pack | 50 pcs. |
| Customs tariff | 85369010 |
| Catalog page information | Page 152 (CL-2007) |

Product notes

WEEE/RoHS-compliant since:
01/01/2005



<http://www.download.phoenixcontact.com>
Please note that the data given here has been taken from the online catalog. For comprehensive information and data, please refer to the user documentation. The General Terms and Conditions of Use apply to Internet downloads.

Technical data

General

| | |
|-----------------------|------|
| Number of levels | 1 |
| Number of connections | 2 |
| Color | gray |

| | |
|------------------------------------|----|
| Insulating material | PA |
| Inflammability class acc. to UL 94 | V0 |

Dimensions

| | |
|------------------|---------|
| Width | 5.2 mm |
| Length | 48.5 mm |
| Height NS 35/7.5 | 36.5 mm |
| Height NS 35/15 | 44 mm |

Technical data

| | |
|----------------------------------|---|
| Maximum load current | 24 A (with 4 mm ² conductor cross section) |
| Rated surge voltage | 8 kV |
| Pollution degree | 3 |
| Surge voltage category | III |
| Insulating material group | I |
| Connection in acc. with standard | IEC 60947-7-1 |
| Nominal current I _N | 24 A |
| Nominal voltage U _N | 800 V |
| Open side panel | ja |

Connection data

| | |
|---|-----------------------|
| Conductor cross section solid min. | 0.2 mm ² |
| Conductor cross section solid max. | 4 mm ² |
| Conductor cross section stranded min. | 0.2 mm ² |
| Conductor cross section stranded max. | 2.5 mm ² |
| Conductor cross section AWG/kcmil min. | 24 |
| Conductor cross section AWG/kcmil max | 12 |
| Conductor cross section stranded, with ferrule without plastic sleeve min. | 0.25 mm ² |
| Conductor cross section stranded, with ferrule without plastic sleeve max. | 2.5 mm ² |
| Conductor cross section stranded, with ferrule with plastic sleeve min. | 0.25 mm ² |
| Conductor cross section stranded, with ferrule with plastic sleeve max. | 2.5 mm ² |
| 2 conductors with same cross section, stranded, TWIN ferrules with plastic sleeve, max. | 0.5 mm ² |
| Type of connection | Leg spring connection |
| Stripping length | 10 mm |

| | |
|---------------------------|----|
| Internal cylindrical gage | A3 |
|---------------------------|----|

Certificates / Approvals



| | |
|-------------------|----------------|
| Certification | CUL, UL |
| Certification Ex: | IECEX, KEMA-EX |

Accessories

| Item | Designation | Description |
|-----------------|-----------------------------|--|
| Assembly | | |
| 3030721 | ATP-ST 4 | Partition plate, Length: 61 mm, Width: 2 mm, Height: 42 mm, Color: gray |
| 3030417 | D-ST 2,5 | End cover, Length: 48.6 mm, Width: 2.2 mm, Height: 29.1 mm, Color: gray |
| 0801762 | NS 35/ 7,5 CU UNPERF 2000MM | DIN rail, material: Copper, unperforated, height 7.5 mm, width 35 mm, length: 2 m |
| 1207640 | NS 35/ 7,5 PERF 755MM | NS 35 DIN rail, height 7.5 mm, length 755 mm |
| 1207653 | NS 35/ 7,5 PERF 955MM | NS35 DIN rail, height 7.5 mm, length 955 mm |
| 1207666 | NS 35/ 7,5 PERF 1155MM | NS 35 DIN rail, height 7.5 mm, length 1155 mm |
| 0801733 | NS 35/ 7,5 PERF 2000MM | DIN rail, material: Steel, galvanized and passivated with a thick layer, perforated, height 7.5 mm, width 35 mm, length: 2 m |
| 0801681 | NS 35/ 7,5 UNPERF 2000MM | DIN rail, material: Steel, unperforated, height 7.5 mm, width 35 mm, length: 2 m |
| 1201756 | NS 35/15 AL UNPERF 2000MM | DIN rail, deep-drawn, high profile, unperforated, 1.5 mm thick, material: Aluminum, height 15 mm, width 35 mm, length 2 m |
| 1201895 | NS 35/15 CU UNPERF 2000MM | DIN rail, material: Copper, unperforated, 1.5 mm thick, height 15 mm, width 35 mm, length: 2 m |
| 1207679 | NS 35/15 PERF 755MM | NS 35 DIN rail, perforated, height 15 mm, length 755 mm |
| 1207682 | NS 35/15 PERF 955MM | NS 35 DIN rail, perforated, height 15 mm, length 955 mm |
| 1207695 | NS 35/15 PERF 1155MM | NS 35 DIN rail, perforated, height 15 mm, length 1155 mm |
| 1201730 | NS 35/15 PERF 2000MM | DIN rail, material: Steel, perforated, height 15 mm, width 35 mm, length: 2 m |
| 1201714 | NS 35/15 UNPERF 2000MM | DIN rail, material: Steel, unperforated, height 15 mm, width 35 mm, length: 2 m |

| | | |
|---------------------|----------------------------|---|
| 1201798 | NS 35/15-2,3 UNPERF 2000MM | DIN rail, material: Steel, unperforated, 2.3 mm thick, height 15 mm, width 35 mm, length: 2 m |
| Bridges | | |
| 3030161 | FBS 2-5 | Plug-in bridge, Number of positions: 2, Color: red |
| 3030174 | FBS 3-5 | Plug-in bridge, Number of positions: 3, Color: red |
| 3030187 | FBS 4-5 | Plug-in bridge, Number of positions: 4, Color: red |
| 3030190 | FBS 5-5 | Plug-in bridge, Number of positions: 5, Color: red |
| 3030213 | FBS 10-5 | Plug-in bridge, Number of positions: 10, Color: red |
| 3030226 | FBS 20-5 | Plug-in bridge, Number of positions: 20, Color: red |
| 3038930 | FBS 50-5 | Plug-in bridge, Number of positions: 50, Color: red |
| Marking | | |
| 3030941 | WST 2,5 | Warning cover, 5-pos., for terminal width: 5.2 mm |
| 1050295 | ZB 5:SO/CMS | Zack strip, 10-section, divisible, special printing, marking according to customer requirements |
| 0803647 | ZBFM 5:SO/CMS | Special printing, Zack marker sheet, flat, 120-section, divisible, marking according to customer requirements |
| Plug/Adapter | | |
| 3002843 | ISH 2,5/0,2 | Insulation stop sleeve, Color: white |
| 3002856 | ISH 2,5/0,5 | Insulation stop sleeve, Color: gray |
| 3002869 | ISH 2,5/1,0 | Insulation stop sleeve, Color: black |
| 0201744 | MPS-MT | Test plugs |
| 3030925 | PAI-4 | Test adapter, Color: gray |
| 3030983 | PS-5 | Test adapter, Color: red |
| Tools | | |
| 1204517 | SZF 1-0,6X3,5 | Actuation tool, for ST terminal blocks, also suitable for use as a bladed screwdriver, size: 0.6 x 3.5 x 100 mm, 2-component grip, with non-slip grip |

DT 2,5 Order No.: 3034028

<http://eshop.phoenixcontact.de/phoenix/treeViewClick.do?UID=3034028>

Address

PHOENIX CONTACT Deutschland GmbH
Flachmarktstr. 8
32825 Blomberg, Germany
Phone +49 5235 3 12000
Fax +49 5235 3 41200
<http://www.phoenixcontact.de>



© 2011 Phoenix Contact
Technical modifications reserved;