



Global Product / Process Change Notification

10523660

To: All active Customers
From: Christian Slinkman
cc: Cathy Maly
cc : Niki Taylor
Date November 1st, 2011

Subject:

This is to inform you that Molex will be changing the underplate and finish/aesthetic appearance of the te contact within the Mini-Fit® and KK® product families.

Nature of Change:

Within the Mini-Fit® and KK® product families, we will be changing from a Bright Tin Finish to a Matte Tin Finish and/or a Bright Tin Finish to a Reflow Matte Tin Finish and from a Copper underplate to Nickel underplate

Impact of change and risk analysis

See Page 3

Qualification reports: See Page 3

Sample availability: February 1st, 2012

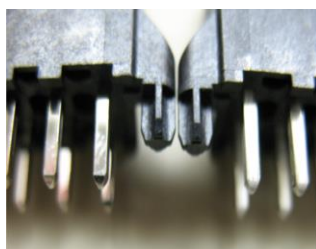
Identification and traceability for the introduction phase:

This will be a running change, so the part numbers will remain the same and parts shipped after Feb. 1st will transition to the matte tin over nickel. All product shipping through January 31st, 2012 will be bright tin. Beginning February 1st, 2012, all parts on the attached list will transition from Bright Tin over Copper to Matte Tin over Nickel or Reflow Matte Tin over Nickel.

Parts Affected : See Page 2

Product Description:

Product Image:



Bright Tin

Matte Tin

Implementation date: February 1st, 2012
For further information please contact your local Molex sales representative.

Molex, Inc.

2222 Wellington Court

Lisle, IL 60532

TEL: 630-969-4747 FAX: 630-969-1352

www.molex.com



rminal

, 2012
over copper.

