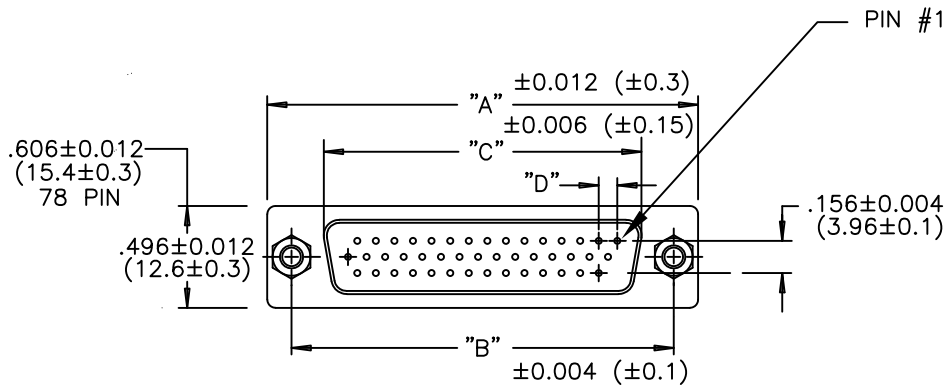


DESCRIPTION: HIGH DENSITY VERTICAL LOW PROFILE/MACHINED

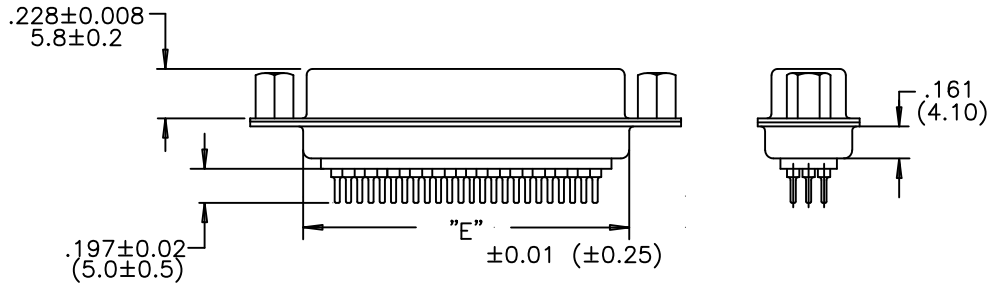


MATERIALS:

INSULATOR: PBT, UL94V-0, 230°C PROCESS TEMP.
CHEMICAL RESISTANCE, COLOR BLACK

SHELL: STEEL, NICKEL PLATED

CONTACT: COPPER ALLOY
FULL GOLD FLASH



ELECTRICAL:

CURRENT RATING: 5 AMPERES

DIELECTRIC WITHSTANDING VOLTAGE:
500VAC FOR 1 MINUTE

INSULATION RESISTANCE: 1000 MEGOHMS MIN.

CONTACT RESISTANCE: 15 MILLIOHMS MAX.

WORKING TEMPERATURE: -50° TO +100° C

197-YYY-Y13LYY1

SERIES _____
NUMBER OF CONTACTS _____
GENDER _____
1 = MALE
2 = FEMALE (NO GROUND INDENTS)
PC MOUNT _____
NICKEL SHELL _____
HARDWARE OPTIONS: _____
00 = .120 MOUNTING HOLE
55 = 4-40 INSERTS
03 = 4-40 HEX STANDOFFS
PLATING: _____
1 = GOLD FLASH

NUMBER OF CONTACTS	"A" Inch (mm)	"B" Inch (mm)	"C" Inch (mm)	"D" Inch (mm)	"E" Inch (mm)
15	1.213 (30.80)	.984 (24.99)	.643 (16.34)	.090 (2.29)	.756 (19.20)
26	1.543 (39.20)	1.312 (33.32)	.972 (24.70)	.090 (2.29)	1.091 (27.70)
44	2.087 (53.00)	1.852 (47.04)	1.512 (38.40)	.090 (2.29)	1.618 (41.10)
62	2.732 (69.40)	2.500 (63.50)	2.157 (54.80)	.095 (2.41)	2.256 (57.30)
78	2.638 (67.00)	2.406 (61.10)	2.055 (52.20)	.095 (2.41)	2.169 (55.10)



THESE DRAWINGS AND SPECIFICATIONS ARE THE PROPERTY OF NorComp AND SHALL NOT BE REPRODUCED, COPIED OR USED AS THE BASIS FOR THE MANUFACTURE OF SALE OF APPARATUS WITHOUT WRITTEN PERMISSION.

DRAWN: PAM JENKINS		DATE: 9-15-05	
CHECKED:		DATE:	
SCALE:	SHEET 1	OF 1	REV 3
DWG NO. 197-YYY-213LYY1			

NorComp

RoHS COMPLIANT