



MicroVue

Digital Microscope with Built-in HD Monitor and 360 Viewer

The MicroVue has all the features required for digital inspection. View live images, capture high resolution images/video files, make text annotations, take accurate measurements, and more without the need for an external PC. The included 360 Viewer Attachment provides a 35 degree angled view and can be rotated 360 degrees to view areas that are otherwise difficult to see.

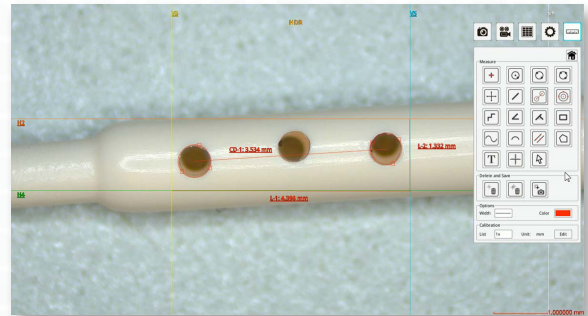
Key Features

- 360 Viewer Attachment rotates to give a 35 degree angled view
- Built-in 11.6" monitor for ergonomic viewing
- 17x - 110x Magnification on the built-in monitor *(when 360 viewer is in the on position, the angled on-screen image is displayed at a reduced 0.5x magnification)*
- 8.6x - 221x Magnification range with optional lenses *(sold separately, not compatible with 360 viewer)*
- HDMI output for external monitor viewing
- Built-in measurement capabilities - No PC required
- Save image/video files to USB storage device
- Compact design saves bench top space

360 Viewer Attachment Rotates to give a 35 degree angled view	Enhances Productivity Eliminates eye strain and body fatigue	Built-in 11.6" Monitor HDMI output for external monitor viewing	USB Output Save image/video files to USB storage device
---	--	---	---



360 Viewer
(View Objects at a 35 Degree Angle)



Built-in Measurement Capabilities
(The 360 Viewer Attachment must be in the OFF position to use measurement functions)

MicroVue <i>Digital Microscope with Built-In HD Monitor and 360 Viewer</i>	
Item #	26700-140-3D
Magnification	17x - 110x (based on the built-in monitor) 33x - 210x (based on an external 22" monitor)
Working Distance	100mm (Standard Lens with 360 Viewer Off)
Resolution	1920 x 1080p Full HD at 60 FPS
Output	HDMI, USB Mouse, USB Storage
Measurement	Built-in Measurement Capabilities
Package Contents	<ul style="list-style-type: none"> • MicroVue Digital Microscope • MicroVue Track Stand Post (13") • MicroVue Track Stand Base (10.25" x 12.73") • DC-12V Power Adapter • Wireless USB Mouse (requires 2 AAA batteries) *batteries not included • USB Flash Drive • Tools for Assembly • Assembly Guide • 360 Viewer Attachment • User Manual