

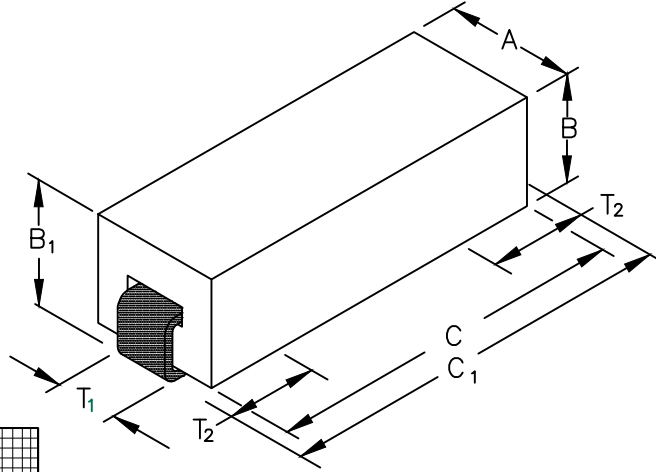
PHYSICAL DIMENSIONS:

- A 3.05 [.120] ± 0.08 [.003]
- B 2.54 [.100] ± 0.08 [.003]
- B₁ 3.05 [.120] ± MAX
- C 8.51 [.335] ± 0.23 [.009]
- C₁ 9.53 [.375] ± MAX

WIRE DIMENSIONS:

- T₁ 1.27 [.050] ± REF.
- T₂ 1.52 [.060] ± 0.51 [.020]

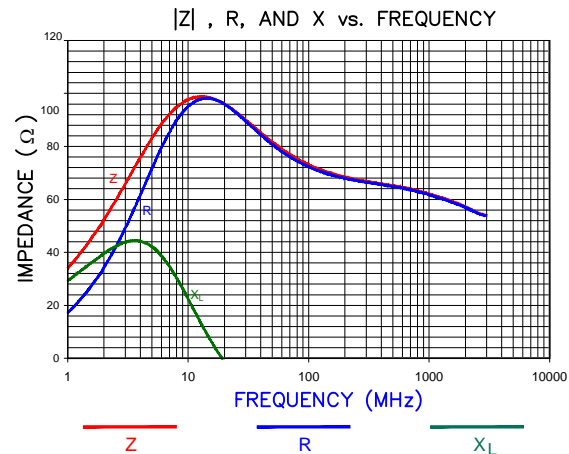
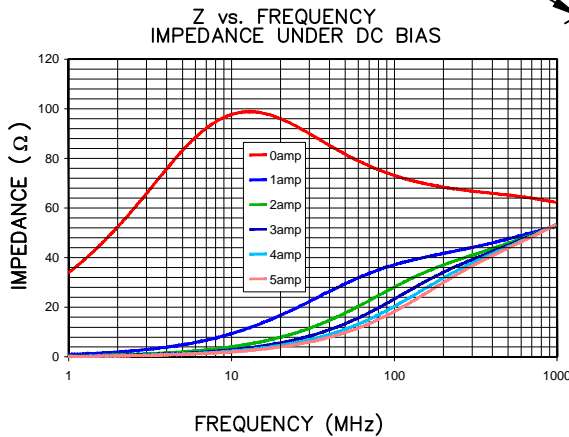
35F0121-1SR-10



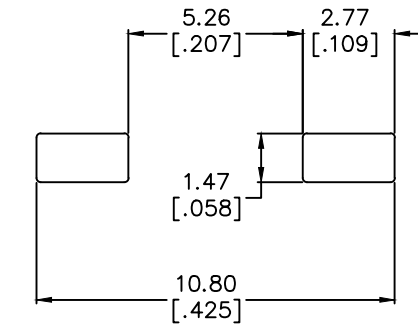
ELECTRICAL CHARACTERISTICS:				
	Z (Ω) @		DCR (Ω)	Rated Current
	1 MHz	10 MHz		
Nominal	-	90		
Minimum	30	72		
Maximum	-	-	.001	10,000 mA

NOTES: UNLESS OTHERWISE SPECIFIED

1. TAPED AND REELED per CURRENT EIA SPECS 13" REELS, 2500 PCS/REEL.
2. COMPONENTS SHOULD BE ADEQUATELY PREHEATED BEFORE SOLDERING.
3. REF. CARRIER TAPE SPECIFICATION # CART121-13.
4. TERMINATION FINISH IS 100% TIN.

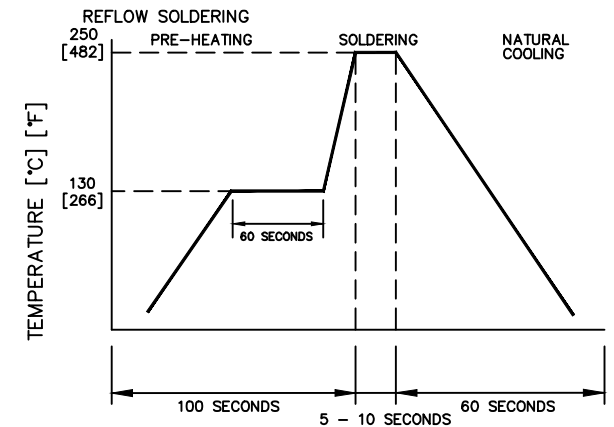


LAND PATTERNS FOR REFLOW SOLDERING

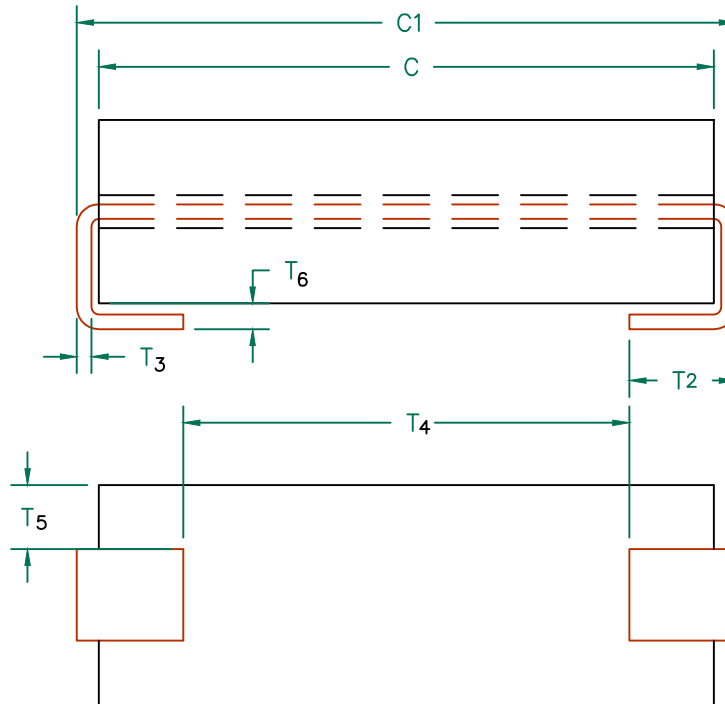
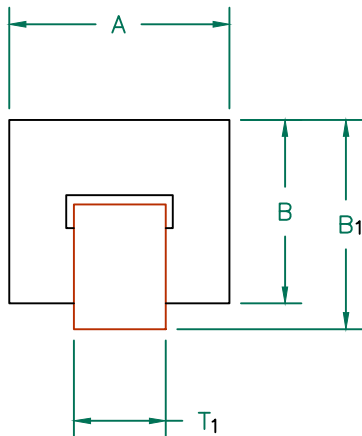


(For wave soldering, add 0.762 [.030] to this dimension.)

RECOMMENDED SOLDERING CONDITIONS



DIMENSIONS ARE IN mm (INCHES).				This print is the property of Laird Tech. and is loaned in confidence subject to return upon request and with the understanding that no copies shall be made without the written consent of Laird Tech. All rights to design or invention are reserved.			
F	UPDATE LOGO	04/23/15	QIU	PROJECT/PART NUMBER: 35F0121-1SR-10	REV F	PART TYPE: ASSEMBLY	DRAWN BY: JRK
E	UPDATE COMPANY LOGO	01/23/09	JRK				
D	CORRECT FREQUENCY ON SHT 2of3 CORRECT C TOLS ON SHEET 3	10/16/07	JRK	DATE: 5/26/04	SCALE: 10:1	SHEET: 1 OF 2	
C	UPDATE LANDPATTERN	08/09/07	JRK	CAD #	TOOL # HO121		
B	ADD ROHS SYMBOL UPDATE LOGO	5/04/07	JRK				
A	ORIGINAL DRAFT	5/26/04	JRK				
REV	DESCRIPTION	DATE	INT	35F0121R-1SR-10-F-1			



SCALE DRAWING 1:1

35F0121-1SR-10

ELECTRICAL TESTING

TEST:	Z	Z
# TURNS	1	1
AWG	-	-
FREQUENCY	1 MHz	10 MHz
NOMINAL	- Ω	90 Ω
MINIMUM	30 Ω	72 Ω
MAXIMUM	- Ω	- Ω
WEIGHT/1000	0.145 kgs.	0.32 lbs.



DIMENSIONS:

A	3.05 [.120]	±	0.08 [.003]
B	2.54 [.100]	±	0.08 [.003]
B ₁	3.05 [.120]	±	MAX
C	8.51 [.335]	±	0.23 [.009]
C ₁	9.53 [.375]	±	MAX

WIRE DIMENSIONS:

T ₁	1.27 [.050]	±	REF.
T ₂	1.52 [.060]	±	0.51 [.020]
T ₃	0.20 [.008]	±	REF.
T ₄	5.97 [.235]	±	REF.
T ₅	0.89 [.035]	±	0.25 [.010]
T ₆	0.43 [.017]	±	MAX

NOTES: UNLESS OTHERWISE SPECIFIED

1. WIRE: FLAT, OXYGEN FREE COPPER 1.27 X 0.20 [.050 X .008] PLATED 100% TIN OVER NICKEL. TIN THICKNESS: 0.005 [.0002], NICKEL THICKNESS: 0.0002 [.00008].
2. IMPEDANCE VALUES ARE GROSS, MEASURED USING WS50X8-* WIRE w/ NO D.C. BIAS.
3. REFERENCE STEWARD WIRE PURCHASE SPEC. WS50X8-*
4. *ON = PARYLENE COATED (.00025" TH).
5. REFERENCE STEWARD CORE P/N 35H0121-*ON.
6. T6 MEASURED ON COMPARATOR WITH TERMINALS UP.

DIMENSIONS ARE IN mm (INCHES).				This print is the property of Laird Tech. and is loaned in confidence subject to return upon request and with the understanding that no copies shall be made without the written consent of Laird Tech. All rights to design or invention are reserved.				
REV	DESCRIPTION	DATE	INT					
F	UPDATE LOGO	04/23/15	QIU	PROJECT/PART NUMBER: 35F0121-1SR-10		REV	PART TYPE:	DRAWN BY:
E	UPDATE COMPANY LOGO	01/23/09	JRK			F	ASSEMBLY	JRK
D	CORRECT FREQUENCY ON SHT 2of3 CORRECT C TOLS ON SHEET 3	10/16/07	JRK	DATE: 5/26/04		SCALE:	SHEET:	
C	UPDATE LANDPATTERN	08/09/07	JRK			10:1	2 OF 2	
B	ADD ROHS SYMBOL UPDATE LOGO	5/04/07	JRK	CAD # 35F0121R-1SR-10-F-2		TOOL #	H0121	
A	ORIGINAL DRAFT	5/26/04	JRK					
REV	DESCRIPTION	DATE	INT					