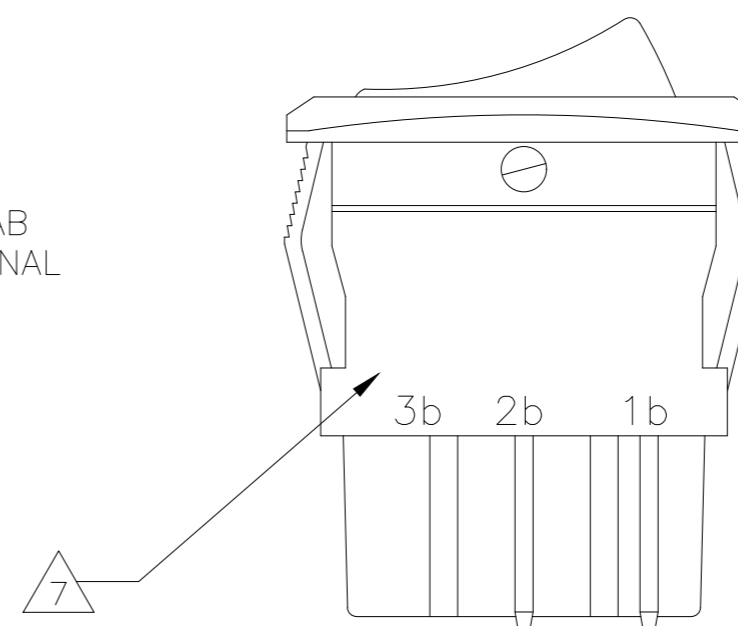
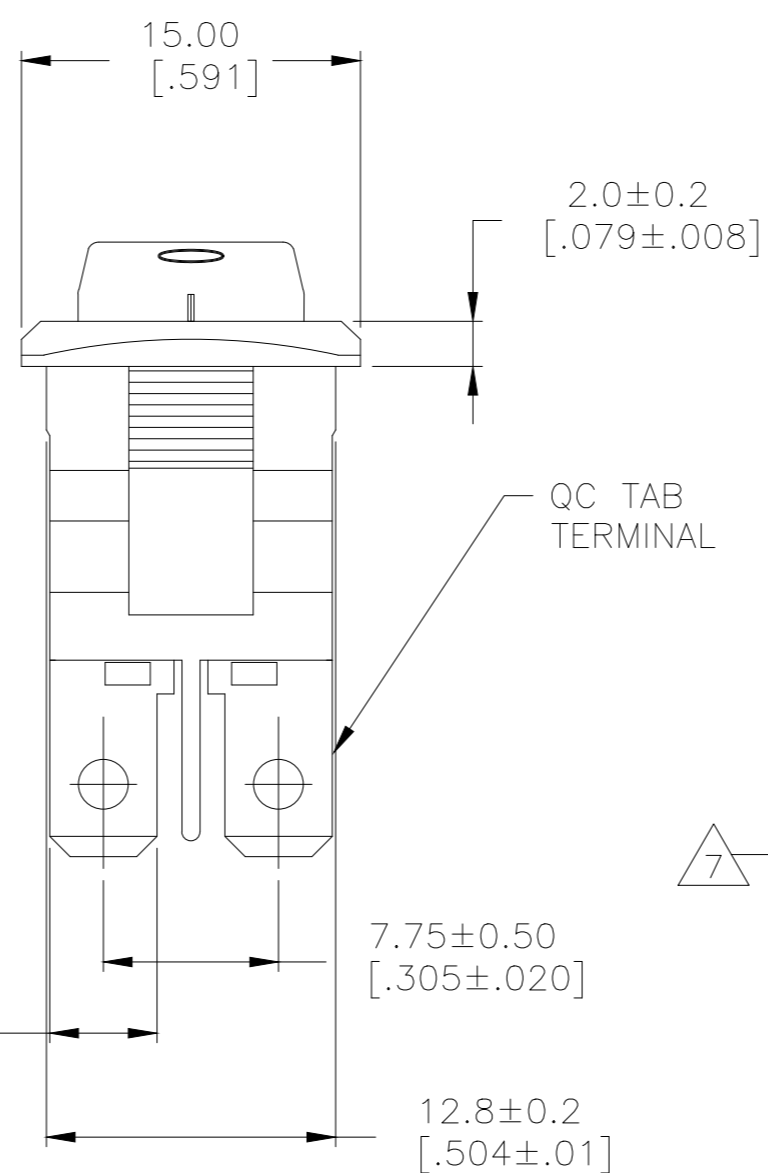
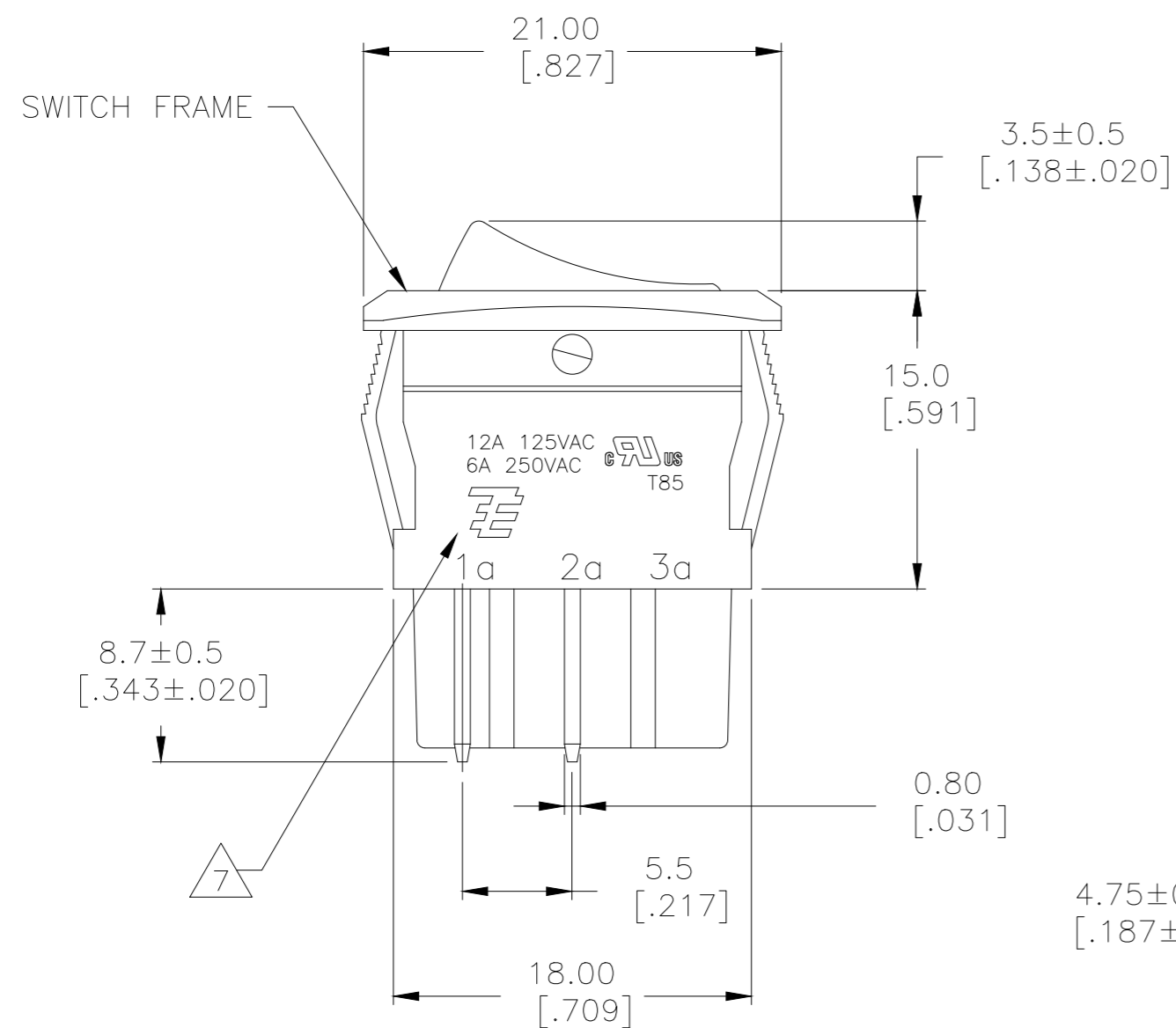
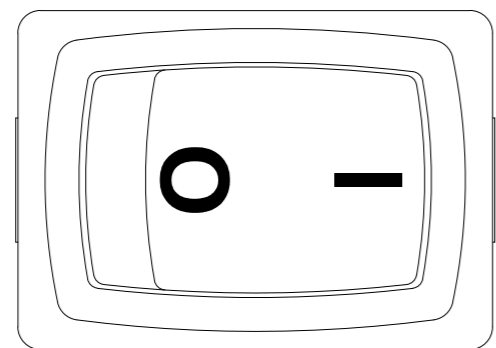
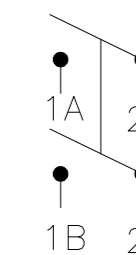


THIS DRAWING IS UNPUBLISHED. RELEASED FOR PUBLICATION
 © COPYRIGHT - By - ALL RIGHTS RESERVED.

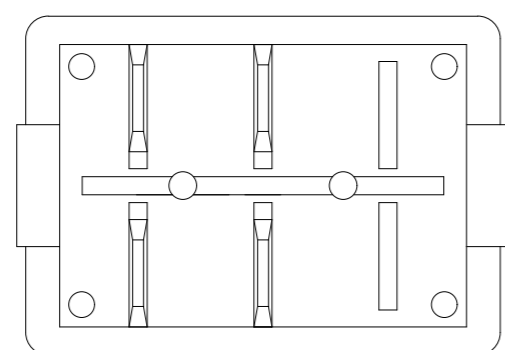
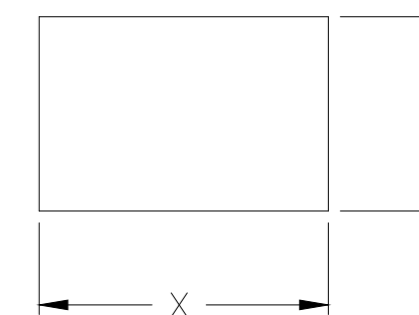
REVISIONS				
P	LTR	DESCRIPTION	DATE	APVD
	A	ECO-07-019301	21AUG07	MB DR
	A1	REVISED PER ECO-16-017354	10MAR2017	RK AS



SWITCH FUNCTION A1
CIRCUIT DIAGRAM



PANEL CUT OUT



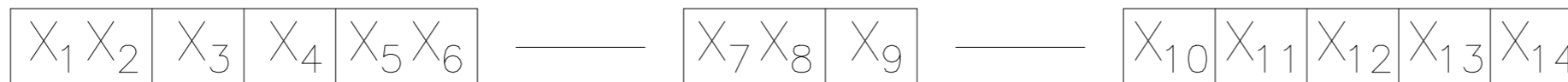
1977068-2 SHOWN

2.00-4.00 [.079-.158]	19.8-0.1 [.780-.004]	13.0+0.1 [.512+.004]
1.25-2.00 [.049-.079]	19.4-0.1 [.764-.004]	13.0+0.1 [.512+.004]
0.75-1.25 [.030-.049]	19.2-0.1 [.756-.004]	13.0+0.1 [.512+.004]
PANEL THICKNESS	X	Y

THIS DRAWING IS A CONTROLLED DOCUMENT.		DWN M. BINNER	03APR2007	
DIMENSIONS: mm [INCHES]		CHK D.ROHDE	NAME	
TOLERANCES UNLESS OTHERWISE SPECIFIED:		APVD -	PRODUCT SPEC	
0 PLC ± -	1 PLC ± 0.30 [.012]	NOT APPLICABLE		
2 PLC ± 0.05 [.002]	3 PLC ± -	APPLICATION SPEC		
4 PLC ± -	ANGLES ± -	NOT APPLICABLE		
MATERIAL	FINISH	WEIGHT	SIZE	CAGE CODE
1	2		A2	00779
CUSTOMER DRAWING		DRAWING NO.	RESTRICTED TO	
		C=1977068	-	
SCALE 3:1		SHEET 1 of 2	REV A1	

REVISIONS				
P	LTR	DESCRIPTION	DATE	APVD
-	-	SEE SHEET 1	-	-

LEGACY PART NUMBER



SWITCH TYPE: X₁X₂ = PR - POWER ROCKER

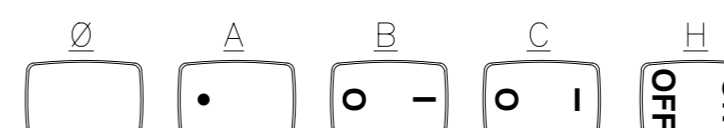
SECONDARY ROCKER COLOR: X₁₂ = Ø - NOT APPLICABLE

NOMINAL PANEL CUT OUT SIZE: X₃ = A - 13.0x19.2 [.512x.756]

NUMBER OF POLES: X₄ = D - DOUBLE

SWITCH FUNCTION: X₅X₆ = A1 - ON-OFF, WITH OPAQUE, SINGLE-COLOR ROCKER BUTTON.

LEGEND TEXT PATTERN: X₁₃ =



CURRENT RATING: X₇X₈ = 12 - △6

TERMINAL TYPE: X₉ = E - QC TAB

LEGEND TEXT COLOR: X₁₄ =

- Ø - NOT APPLICABLE
- G - GREEN
- R - RED
- B - BLACK
- W - WHITE

FRAME COLOR: X₁₀ = B - BLACK
W - WHITE

ROCKER COLOR: X₁₁ = B - BLACK
G - GREEN
R - RED
W - WHITE

1 MATERIALS:
 ROCKER BUTTON & HOUSING FRAME: NYLON 66, UL 94 V-2.
 TERMINAL, ACTIVE CONTACTOR: COPPER ALLOY PER ASTM B152/B152M
 PLUNGER: BRASS PER ASTM B036
 SPRING: STEEL WIRE PER ASTM A228/A228M

2 FINISH:
 PLUNGER: 1.02µm[.000040]MIN NICKEL

3 ELECTRICAL SPECIFICATIONS:
 CURRENT AND VOLTAGE: **6**
 CONTACT RESISTANCE: (INITIAL): <100mΩ
 DIELECTRIC STRENGTH (INITIAL): >1000 VAC, 1 MINUTE
 INSULATION RESISTANCE (INITIAL): >100MΩ (500 VDC BETWEEN OPEN CONTACTS)
 ELECTRICAL LIFE ENDURANCE: >6000 OPERATIONS, VOLTAGE DROP: <100mV
 TEMPERATURE RISE AT TERMINALS: <30°C, 6000 OPERATIONS
 (AMBIENT CONDITIONS: 25±2°C AND 65±5%R.H)

4 MECHANICAL SPECIFICATIONS:
 ACTUATING FORCE: 400g MIN, 800g MAX
 OPERATING LIFE ENDURANCE: >100,000 OPERATIONS
 TERMINAL RETENTION FORCE: >6.8kg- QC TAB

5 ENVIRONMENTAL SPECIFICATIONS:
 AMBIENT TEMPERATURE: -20°C TO +85°C
 HUMIDITY: MAX 85%
 SALT SPRAY: NO REMARKABLE RUST ON METAL PARTS
 (5% SALT/ 35°C, 24HRS)
 SHOCK: NO MECHANICAL DEFECT OR DAMAGE
 (500G 11MSEC / X,Y,Z, 3 TIMES)

6 12A@125VAC/6A@250VAC
7 ELECTRICAL RATINGS, APPROVED AGENCY LOGOS, TERMINAL IDENTIFICATION NUMBERS, AND THE TE LOGO MOLDED APPROXIMATELY AS SHOWN ON THE SIDES OF THE SWITCH HOUSING.

8 COMPONENT RECOGNIZED TO US & CANADIAN STANDARDS, UL FILE NO. E46765.

9 ROHS 2002/95/EC COMPLIANT.

OBSOLETE	PRADA1-12F-BROBW	1977068-5
	PRADA1-12F-BR000	1977068-4
	PRADA1-12F-BB0CW	1977068-3
	PRADA1-12F-BB0BW	1977068-2
	PRADA1-12F-BB000	1977068-1
	LEGACY PART NUMBER	PART NUMBER

THIS DRAWING IS A CONTROLLED DOCUMENT.		DWN M. BINNER	03APR2007	STE TE Connectivity	
DIMENSIONS: mm [INCHES]		CHK D.ROHDE	APVD -		
TOLERANCES UNLESS OTHERWISE SPECIFIED:		PRODUCT SPEC		NAME POWER ROCKER SWITCH 13.0mmX19.2mm PANEL SIZE, DPST, 4 TERMINALS, NON-ILLUMINATED	
0 PLC ± -		NOT APPLICABLE		APPLICATION SPEC	
1 PLC ± 0.30[.012]		NOT APPLICABLE		SIZE CAGE CODE DRAWING NO RESTRICTED TO	
2 PLC ± 0.05[.002]		NOT APPLICABLE		A2 00779 C-1977068	
3 PLC ± -		NOT APPLICABLE		SCALE 3:1 SHEET 2 of 2 REV A1	
4 PLC ± -		NOT APPLICABLE			
ANGLES ± -		NOT APPLICABLE			
FINISH		WEIGHT -			
1		2		CUSTOMER DRAWING	