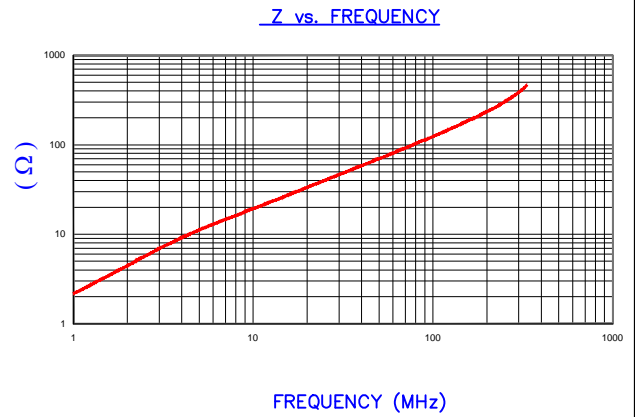


DETAIL "A"  
CHAMFER  
SCALE=15:1

IMPEDANCE ( Z )				
Frequency	25 MHz	100 MHz	300 MHz	
Nominal (REF)	34 Ω	97 Ω	242 Ω	
Minimum	- Ω	78 Ω	- Ω	



AGILENT E4991A Impedance/Material Analyzer  
HP 16092A-Test Fixture REF# 4997

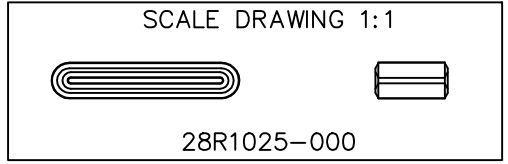
FERRITE CORE DIMENSIONS (SPEC): mm [in]

A	26.00 [1.024]	± 0.42 [.017]
B	21.40 [.8425]	± 0.33 [.013]
C	10.00 [.394]	± 0.30 [.012]
D	5.00 [.197]	+ 0.20 [.008] - 0.18 [.007]
E	0.75 [.030]	+ 0.18 [.007] - 0.10 [.004]

WEIGHT/1000 5.18 kgs [11.42 Lbs]

NOTES:

- COSMETIC SPECIFICATION REFER TO WI-QA-038.



DIMENSIONS ARE IN mm[INCHES].				This print is the property of Laird Tech. and is loaned in confidence subject to return upon request and with the understanding that no copies shall be made without the written consent of Laird Tech. All rights to design or invention are reserved.		Laird	
D	UPDATE LOGO, ADD NOTES	03/14/2019	Jcai	PROJECT/PART NUMBER:	28R1025-000	REV	D
C	UPDATE COMPANY LOGO	03/18/08	JRK	PART TYPE:	FERRITE RIBBON CORE	DRAWN BY:	JRK
B	UPDATE Z SPEC AND COMPANY LOGO	07/27/07	JRK	DATE:	01/15/07	SCALE:	3 : 1
A	ORIGINAL DRAFT	01/15/07	JRK	CAD #	28R1025-000-D	MATERIAL:	Ferrite
REV	DESCRIPTION	DATE	INT	TOOL #	R1025		