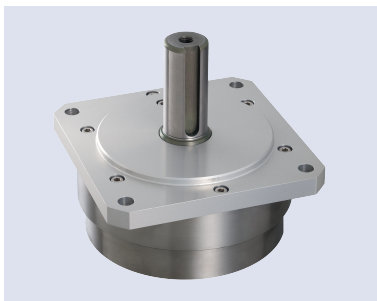


FRT-W1-105

ROTARY DAMPER



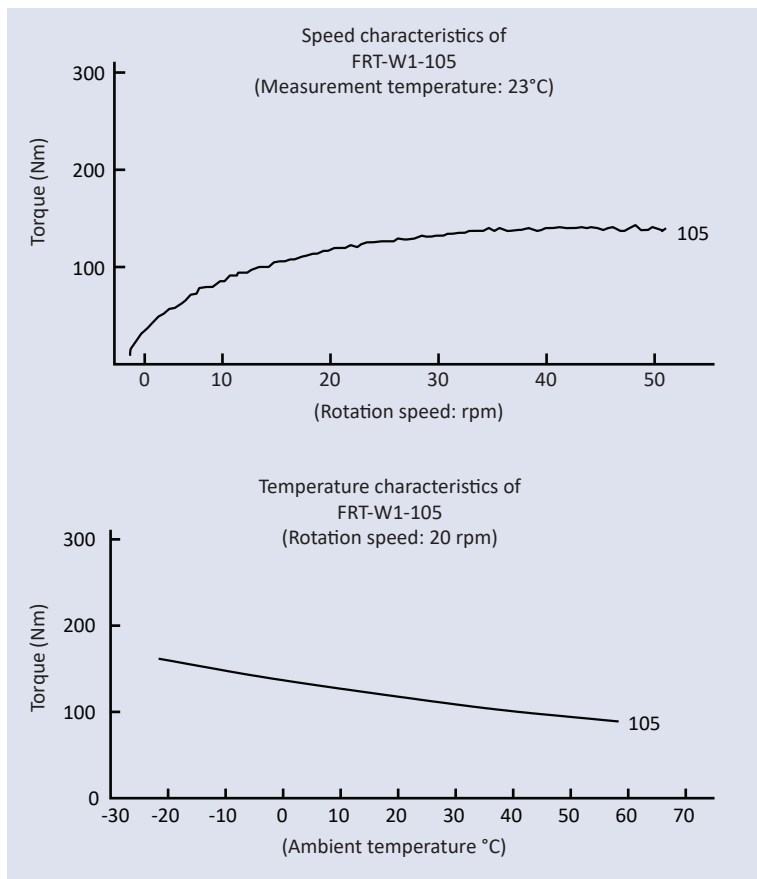
SPECIFICATIONS

Model	Rated Torque	Damping Direction	Max Rotation Speed	Max Cycle Rate
FRT-W1-105	100±20Nm	Both directions	50 RPM	1.5 cycles/min.

Operating Temperature	Weight	Main Body Material	Cap Material	Rotating Shaft Material	Oil Type
-20 ~ 60°C	6000g	SUS304	A2017	SUS420	Silicone Oil

Note 1) Rated torque measured at a rotation speed of 20rpm at 23°C

DAMPING CHARACTERISTICS



- Speed characteristics:** A rotary damper's torque varies according to the rotation speed. In general, as shown in the graph to the left, the torque increases as the rotation speed increases, and the torque decreases as the rotation speed decreases. In addition, please note that the starting torque slightly differs from the rated torque.
- Temperature characteristics:** A rotary damper's torque varies according to the ambient temperature. In addition, as shown in the graph to the left, the torque decreases as the ambient temperature increases, and the torque increases as the ambient temperature decreases. This is because the viscosity of the silicone oil inside the damper varies according to the temperature. When the temperature returns to normal, the torque will return to normal as well.