

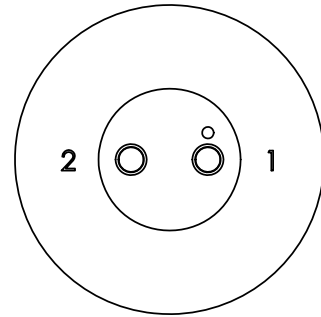
CUSTOMER PRINT

PART NUMBER: 7282-XSG-300

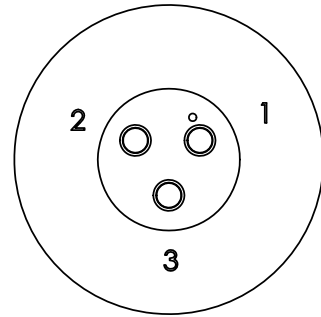
ASSY P/N	NO. OF CONTACTS
7282-2SG-300	2-#20
7282-3SG-300	3-#20
7282-4SG-300	4-#20
7282-5SG-300	5-#20
7282-6SG-300	6-#20

**NOTES:**

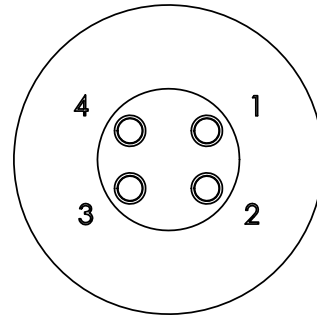
1. ALL PARTS TO BE BULK PACKED.
2. CONTACTS ASSEMBLED INTO CONNECTOR.
3. SEE DRAWING HPMISTD FOR HOLE PATTERN.
4. ALL DIMENSIONS ARE REFERENCE ONLY EXCEPT WHEN NOTED WITH TOLERANCE



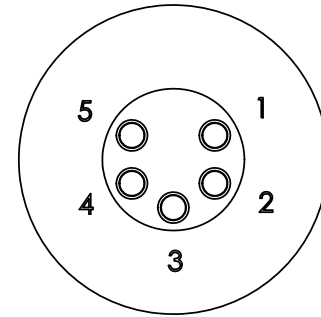
**WIRING VIEW**  
7282-2SG-300



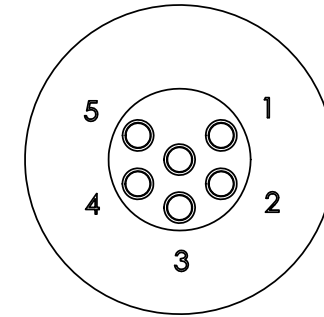
**WIRING VIEW**  
7282-3SG-300



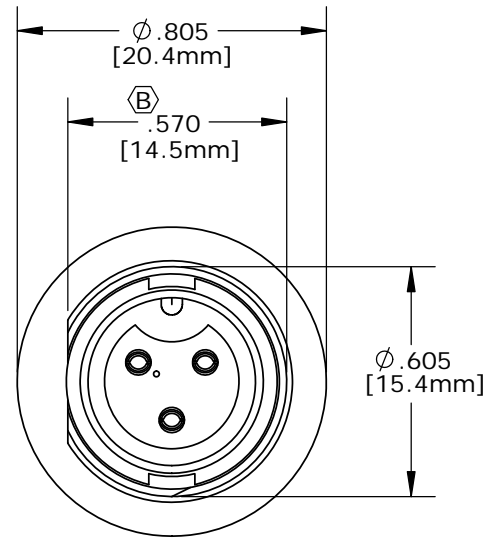
**WIRING VIEW**  
7282-4SG-300



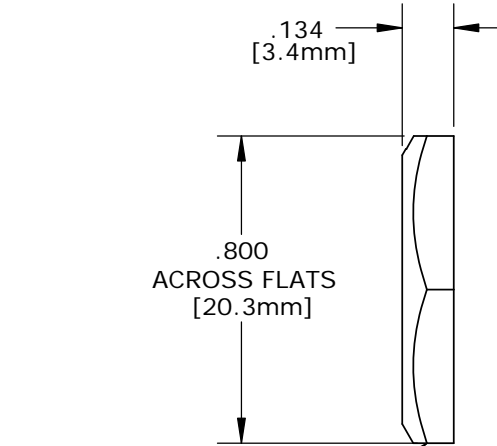
**WIRING VIEW**  
7282-5SG-300



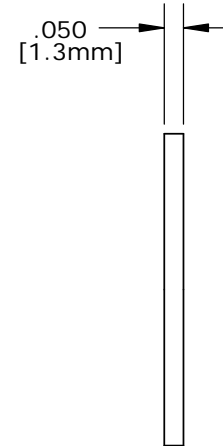
**WIRING VIEW**  
7282-6SG-300



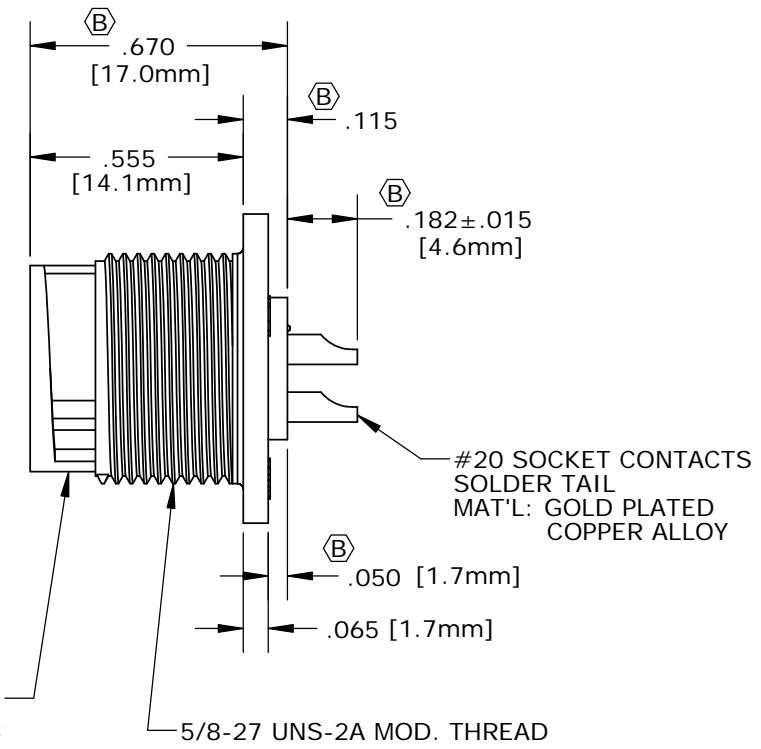
**FACE VIEW**  
7282-3SG-300 SHOWN



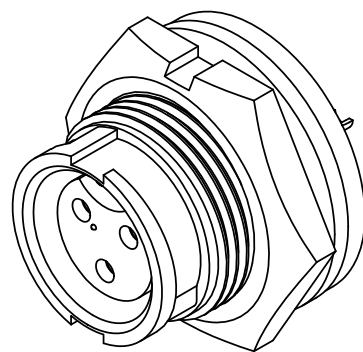
HEX NUT  
MAT'L: NYLON, BLACK



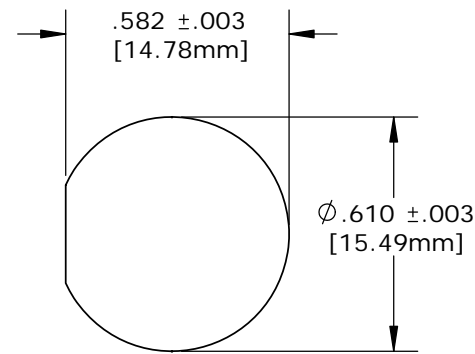
GASKET  
MAT'L: RUBBER, BLACK



PANEL CONNECTOR  
MAT'L: NYLON, BLACK  
NO. OF POS. SEE CHART



**SHOWN ASSEMBLED KIT**  
FOR CUSTOMER REFERENCE ONLY  
7282-3SG-300 SHOWN



**RECOMMENDED  
PANEL CUT-OUT**

DIMENSIONS IN BRACKET [ ] ARE METRIC.

**CUSTOMER APPROVAL**

THIS DOCUMENT CONTAINS CONFIDENTIAL INFORMATION PROPRIETARY TO CONXALL CORPORATION. ANY REPRODUCTION, DISCLOSURE, OR USE OF THIS DOCUMENT / INFORMATION IS EXPRESSLY PROHIBITED UNLESS AUTHORIZED IN WRITING BY CONXALL CORPORATION.

APPROVED BY: \_\_\_\_\_

DATE: \_\_\_\_\_

**RoHS COMPLIANT**

B	AN	08-24-18	DIM. .670 WAS .665, .570 WAS .565, .182 WAS .187, ADDED DIM. .115 AND .050. PER ECR 8794.
A	AN	01-11-11	CREATED FAMILY DRAWING PER DOR 11-E149SL. SUPERSEDED 7282-3SG-300, 7282-5SG-300, 7282-6SG-300.
REV.	INIT.	DATE	DESCRIPTION
	AN	01-07-11	
ALL INFORMATION ILLUSTRATED IS THE PROPERTY OF "CONXALL CORPORATION". UNAUTHORIZED DUPLICATION OR DISTRIBUTION OF THIS DOCUMENT IS PROHIBITED.			<p>601 E. WILDWOOD VILLA PARK, IL 60181</p>
ALL UNITS ARE IN FEET, INCHES, FRACTION OF INCHES AND DECIMALS.			
APPROVED BY:		TITLE: PANEL CONNECTOR ASSEMBLY (2-6) #20 SOCKET CONTACTS, SOLDER TAIL MINI-CON-X	
SCALE	SIZE	SHEET	CUSTOMER: STANDARD PRODUCT
NTS	B	1 OF 1	
FILE:	DIRECTORY:	PART NUMBER:	REV
7282-XSG-300	SLW	7282-XSG-300	B