



# 902.5 MHz / 947.5 MHz MonoBlock Duplexer



**ANATECH ELECTRONICS INC**  
RF & Microwave Filters & Products

**Part Number: AM902-947D1165**

| Parameter                           | Frequency (MHz) | Specification at 25°C |
|-------------------------------------|-----------------|-----------------------|
| <b>Low Band Response (S21)</b>      |                 |                       |
| Pass Band Insertion Loss            | 890-915         | -2.40                 |
| Pass Band Ripple                    | 890-915         | 1.30                  |
| Pass Band Return Loss at Port 2     | 890-915         | -12.00                |
| Pass Band Return Loss at Ant        | 890-915         | -12.00                |
| Attenuation                         | 870             | -18.00                |
|                                     | 925             | -17.00                |
|                                     | 935-960         | -52.00                |
| <b>High Band Response (S13)</b>     |                 |                       |
| Pass Band Insertion Loss            | 935-960         | -2.40                 |
| Pass Band Ripple                    | 935-960         | -1.30                 |
| Pass Band Return Loss at Port 3     | 935-960         | -12.00                |
| Pass Band Return Loss at Ant        | 935-960         | -12.00                |
| Attenuation                         | 925             | -17.00                |
|                                     | 890-915         | -52.00                |
| <b>Isolation (S32)</b>              |                 |                       |
| Rejection at Low Band               | 890-915         | -55.00                |
| Rejection at Mid Band               | 915-935         | -40.00                |
| Rejection at High Band              | 935-960         | -55.00                |
| Power into any port                 |                 | 6 W Max               |
| <b>Environmental Specifications</b> |                 |                       |
| Operating Temperature               |                 | -40°C to +85°C        |
| Storage Temperature                 |                 | -50°C to +95°C        |



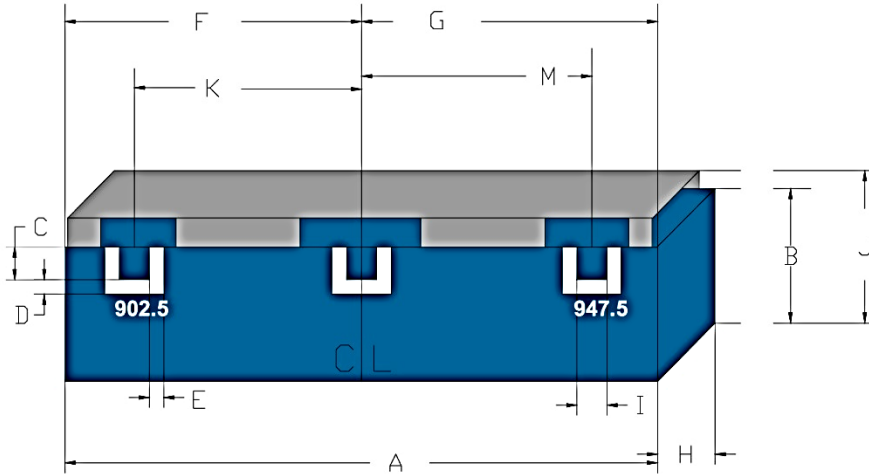
# 902.5 MHz / 947.5 MHz MonoBlock Duplexer

Part Number: AM902-947D1165



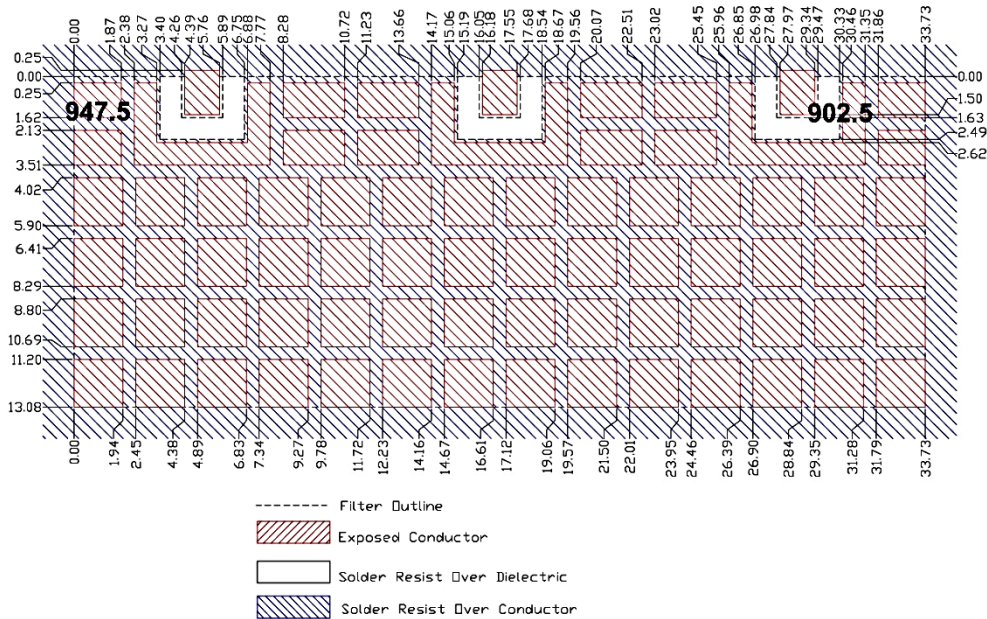
**ANATECH ELECTRONICS INC**  
RF & Microwave Filters & Products

## Mechanical Drawing:



| Dimension | Nominal (mm) | Tolerance (mm) +/- |
|-----------|--------------|--------------------|
| A         | 33.73        | 0.27               |
| B         | 13.08        | max                |
| C         | 1.63         | 0.13               |
| D         | 0.86         | 0.13               |
| E         | 0.86         | 0.13               |
| F         | 16.87        | 0.13               |
| G         | 16.87        | 0.13               |
| H         | 6.56         | max                |
| I         | 1.63         | 0.13               |
| J         | 14.00        | max                |
| K         | 11.79        | 0.13               |
| M         | 11.79        | 0.13               |

## PCB Layout:





**ANATECH ELECTRONICS INC**  
RF & Microwave Filters & Products

# 902.5 MHz / 947.5 MHz MonoBlock Duplexer

**Part Number: AM902-947D1165**



## Response Plot:

