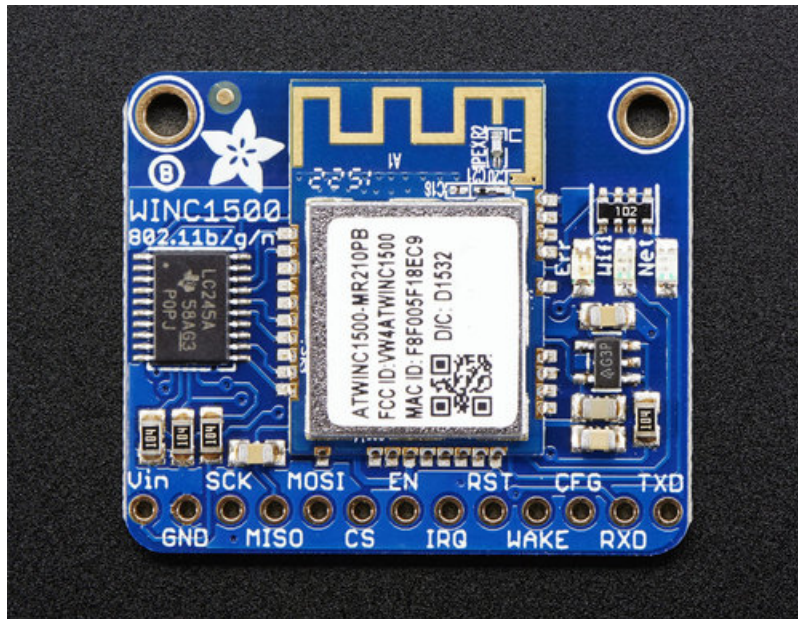


Adafruit ATWINC1500 WiFi Breakout

Created by lady ada

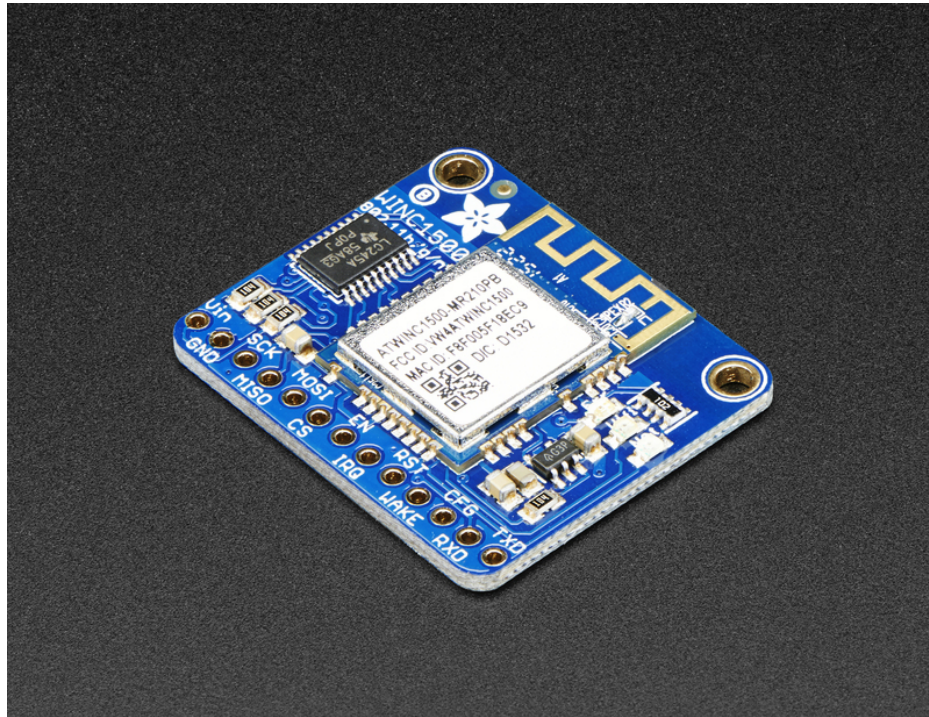


Last updated on 2018-11-11 10:18:14 PM UTC

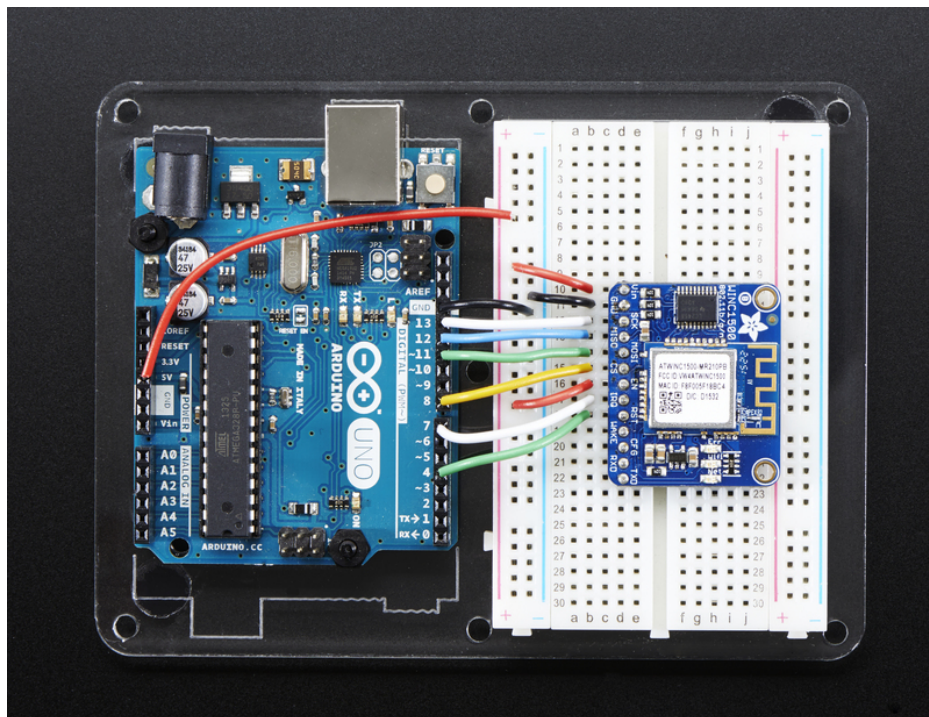
Guide Contents

Guide Contents	2
Overview	3
Pinouts	6
Power Pins	6
SPI Pins	6
Other SPI Interface Pins	6
Assembly	8
Prepare the header strip:	8
Add the breakout board:	9
And Solder!	9
Wiring & Test	12
Install the Library	12
Check Connections & Version	13
Scanning WiFi	15
Connect & Read Webpage	16
Updating Firmware	18
Updating SSL Certificates	23
What SSL/TLS support is available with the WINC1500?	26
Downloads	27
Datasheets & Files	27
Schematic	27
Fabrication Print	27

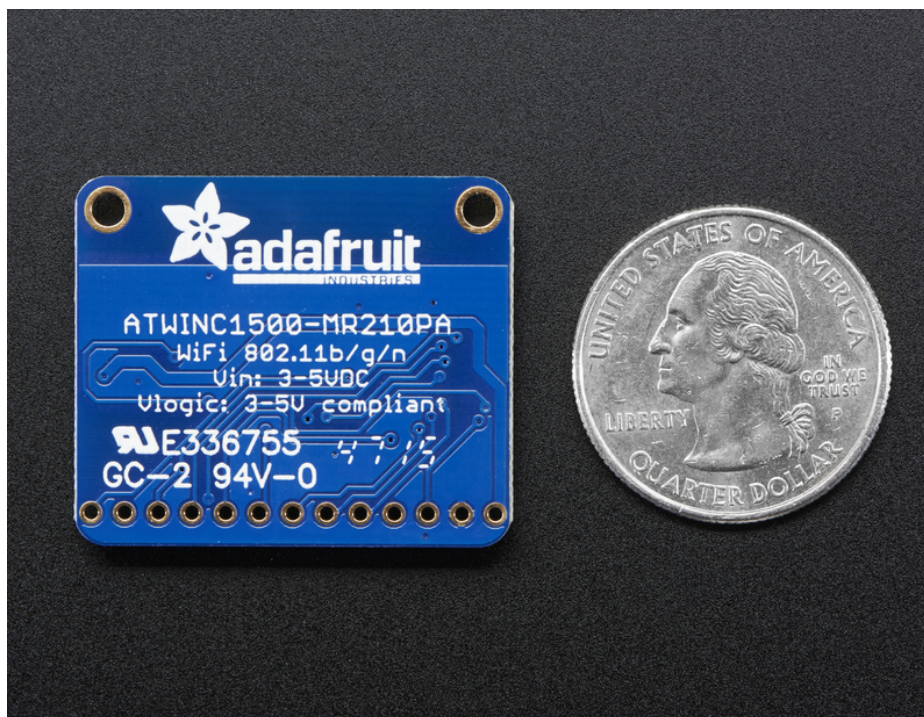
Overview



Connect your Arduino to the Internet with this fine new FCC-certified WiFi module from Atmel. This 802.11bgn-capable WiFi module is the best new thing for networking your devices, with SSL support and rock solid performance - running our adafruit.io MQTT demo for a full weekend straight with no hiccups (it would have run longer but we had to go to work, so we unplugged it). We like these so much, they've completely replaced the CC3000 module on all our projects.

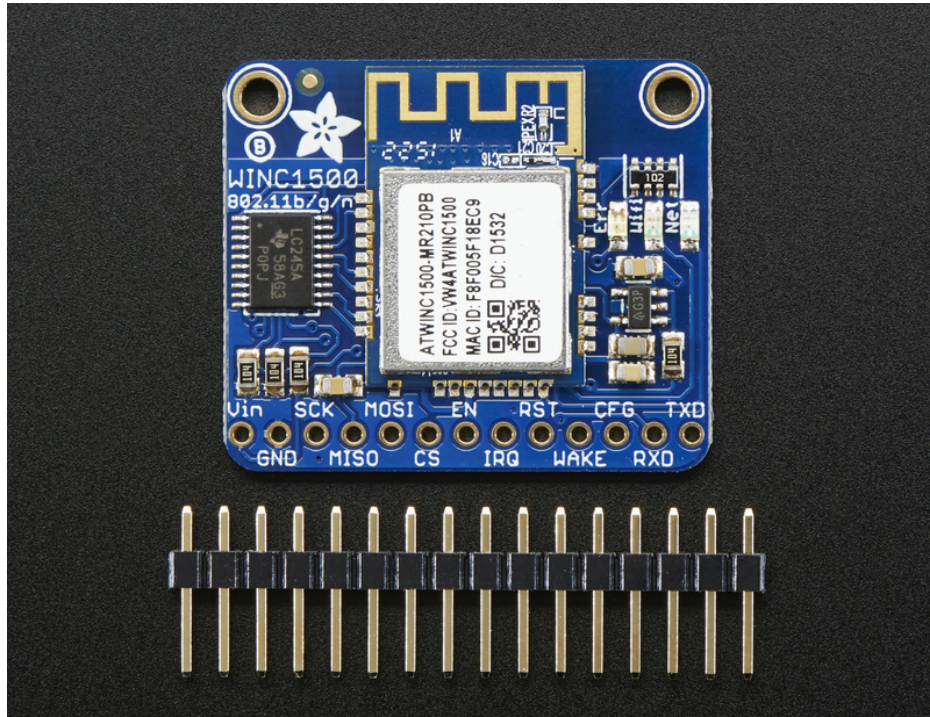


The ATWINC1500 uses SPI to communicate, so with about 5 or 6 wires, you can get your wired up and ready to go. Right now the Atmel-supplied library works great with Arduino M0 & M4, but won't work with 328P, or 32u4 and may not work on other Arduinos. You can clock it as fast as 12MHz for speedy, reliable packet streaming. Communication is done through the standard Client & Server interface so all your Ethernet & older WiFi code is easy to adapt. Scanning/connecting to networks is very fast, a few seconds.



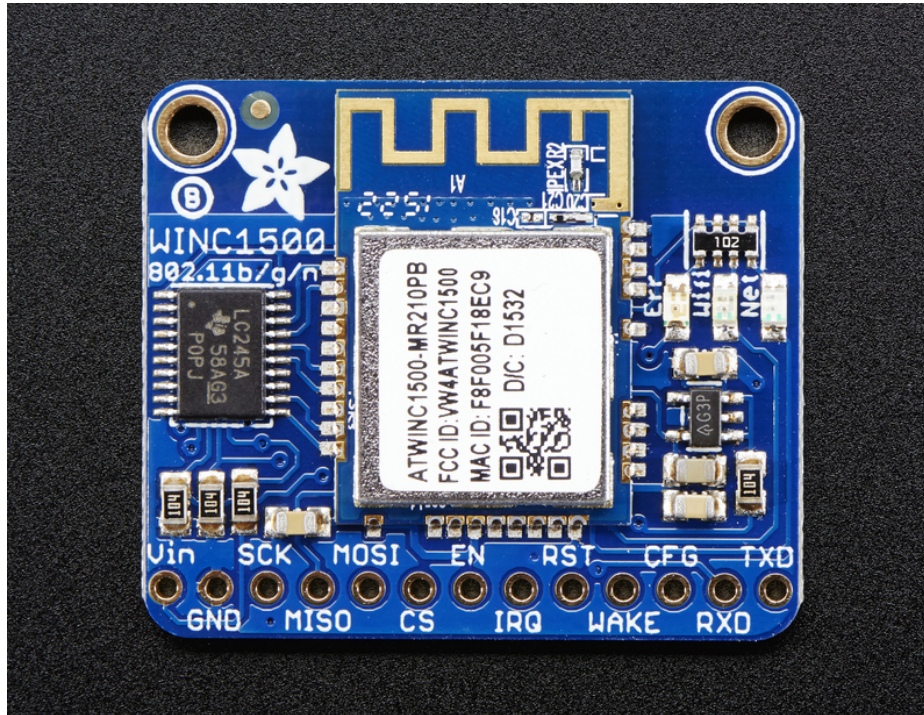
This module works with 802.11b, g, or n networks & supports WEP, WPA and WPA2 encryption. The datasheet says it can do Soft-AP mode but we don't have any code to actually use that.

Since this is our new favoritest SPI-protocol WiFi module we've decided to make a little breakout for it. The breakout comes with level shifting on all the input pins so you can use it with 3V or 5V logic. A 3.3V voltage regulator that can handle the 300mA spikes lets you power from 3-5.5VDC. There's also 3 LEDs that you can control over the SPI interface (part of the library code) or you can have controlled by the Arduino library. They'll light up when connected to an SSID, or transmitting data.



Comes with a stick of header you can solder on, to plug into a breadboard and a set of tutorials & code so you can follow along!

Pinouts



The ATWINC1500 module does have a bunch of pins, but they're pretty easy to understand. Lets check it out!

Power Pins

- **Vin** - this is the power-in pin. Connect to 3.3 - 5.5VDC
The wifi module can draw up to 300mA during transmit (for small blips of time) So make sure that your power supply can supply it.
- **GND** - ground for signal and power

SPI Pins

This is how you send and receive data from the module

- **SCK** - SPI clock input, 3V or 5V compliant
- **MISO** - SPI data out from module, 3.3V line level
- **MOSI** - SPI data into module, 3V or 5V compliant
- **CS** - SPI chip select, pull down when transmitting to/from the ATWINC. By default this is pulled to Vin with a 100K resistor

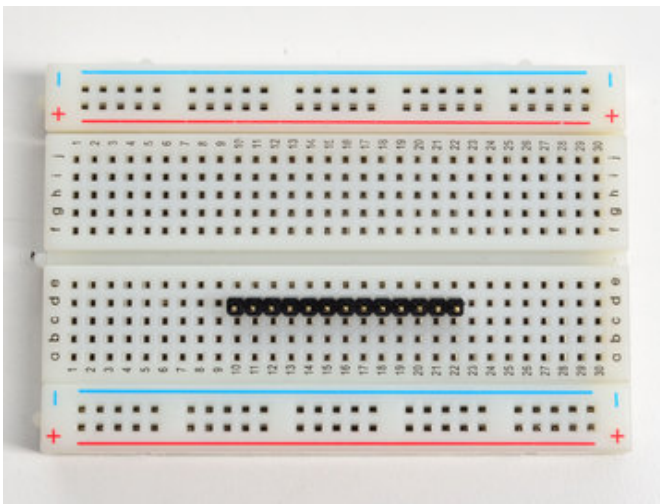
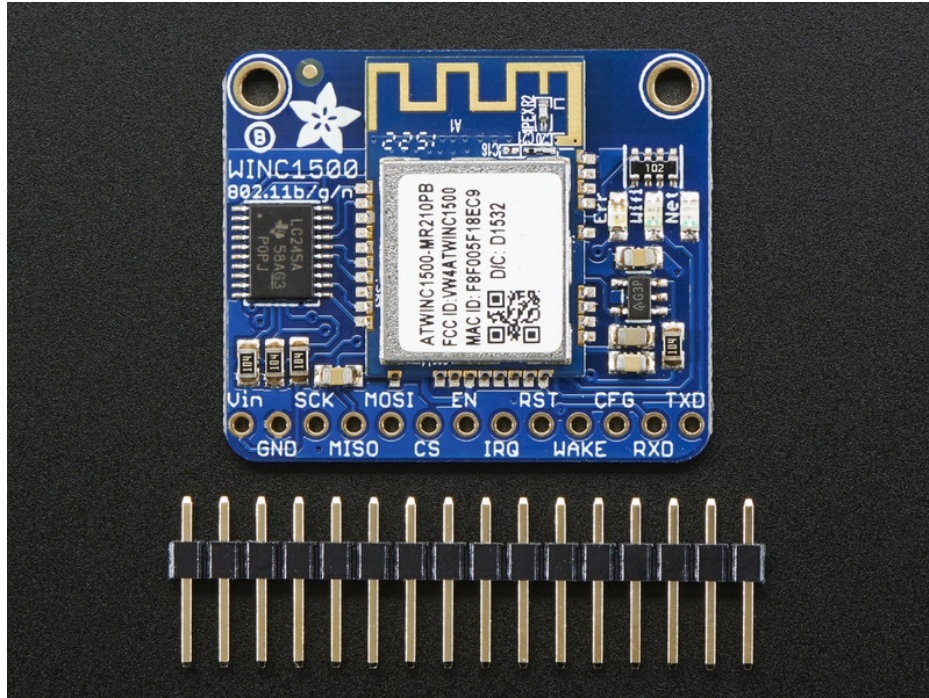
Other SPI Interface Pins

- **EN** - Enables the entire module, by default tied low with a 100K resistor. Tie to 3-5V to keep the module on all the time, connect to a ground signal to disable the module
- **IRQ** - Interrupts from the module, connect to your microcontroller's INT input line. 3.3V logic level
- **RST** - Module reset, by default tied low with a 100K resistor. Pull high to bring out of reset.
- **Wake** - wake input signal, used to wake up the module (not used in existing code, but available if you can figure it out!) 3-5V logic in
- **CFG** - allows you to select between SPI (default) or UART data transport. Since we don't have any UART code,

keep disconnected

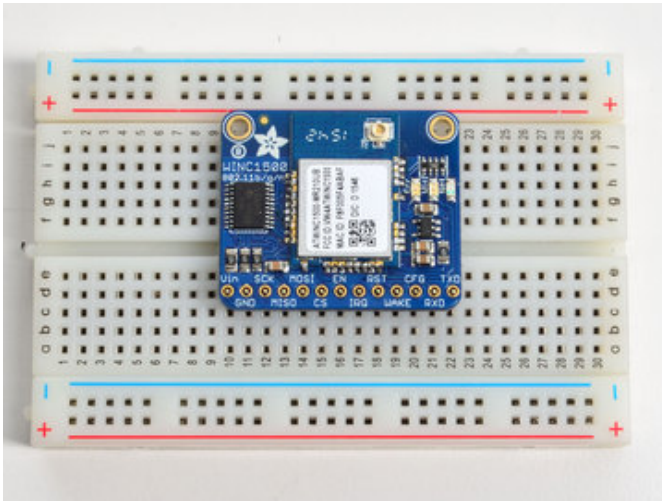
- **RXD/TXD** - UART data transport pins. Since we don't have any UART code, keep disconnected

Assembly



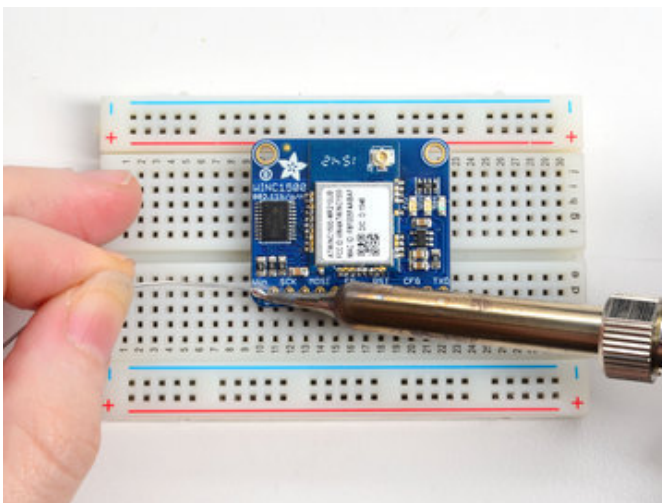
Prepare the header strip:

Cut the strip to length if necessary. It will be easier to solder if you insert it into a breadboard - **long pins down**



Add the breakout board:

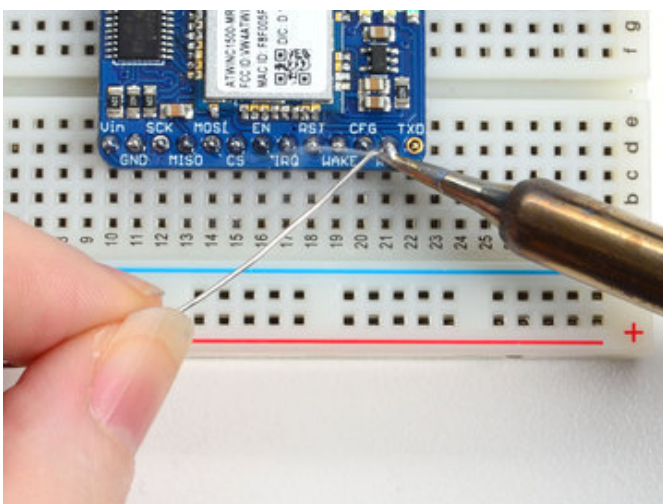
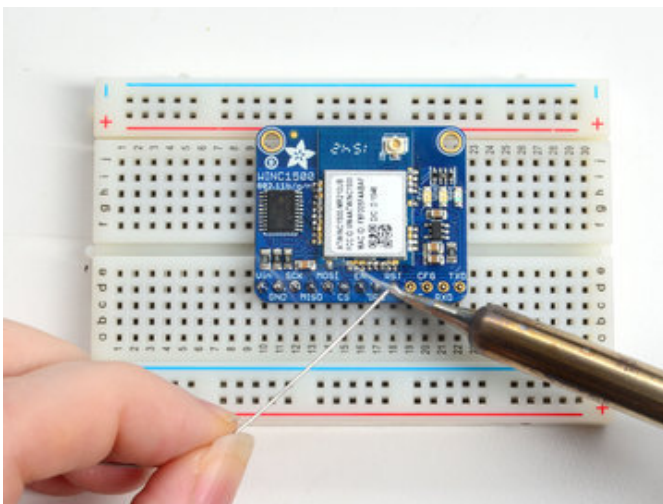
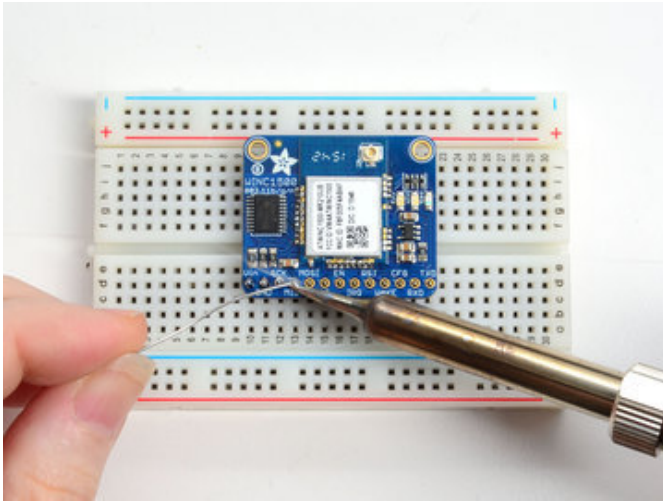
Place the breakout board over the pins so that the short pins poke through the breakout pads



And Solder!

Be sure to solder all pins for reliable electrical contact.

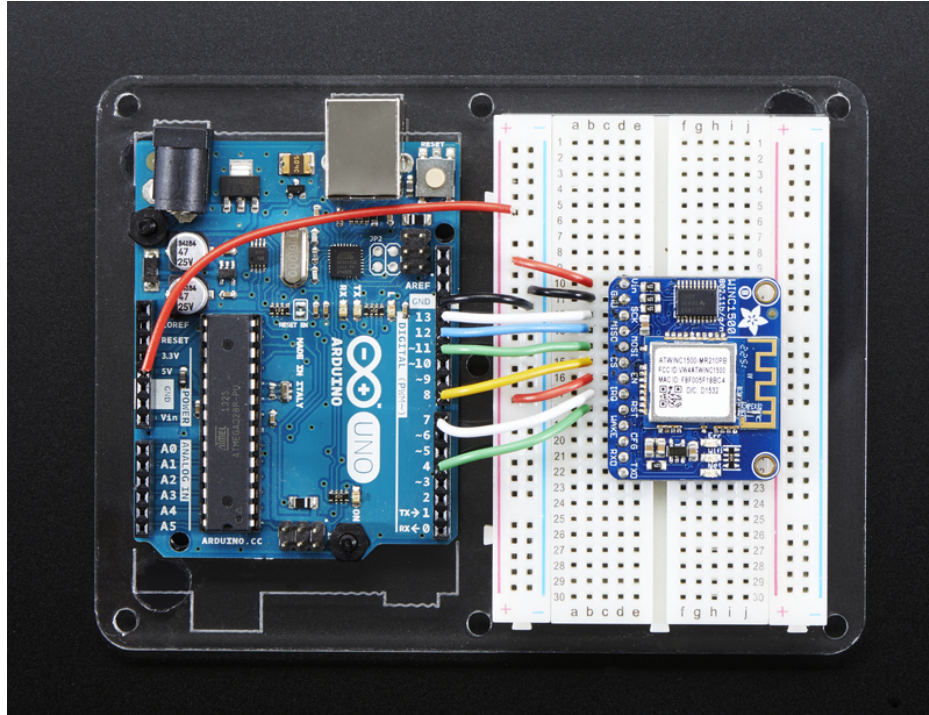
(For tips on soldering, be sure to check out our [Guide to Excellent Soldering](https://adafruit.com/guides/adafruit-excellent-soldering) (<https://adafruit.com/guides/adafruit-excellent-soldering>)).





You're done! Check your solder joints visually and continue onto the next steps

Wiring & Test



For this initial demo we'll be using an Arduino UNO to connect. You can also use an Arduino Zero, but you'll have to use the ICSP 6-pin header not pins 11,12,13

- **Vin** - connect this to 3.3V or 5V, whichever is the logic voltage of the microcontroller you're using. For UNO this will be 5V, for Zero its 3.3V
- **GND** - connect to common ground
- **SCK** - Connect to SPI clock. On UNO this is pin #13 on Zero its on the [6-pin ISP header \(https://adafruit.it/iCE\)](https://adafruit.it/iCE)
- **MISO** - Connect to SPI MISO. On UNO this is pin #12 on Zero its on the [6-pin ISP header \(https://adafruit.it/iCE\)](https://adafruit.it/iCE)
- **MOSI** - Connect to SPI MOSI. On UNO this is pin #11 on Zero its on the [6-pin ISP header \(https://adafruit.it/iCE\)](https://adafruit.it/iCE)

For the remaining pins, you can be a little flexible:

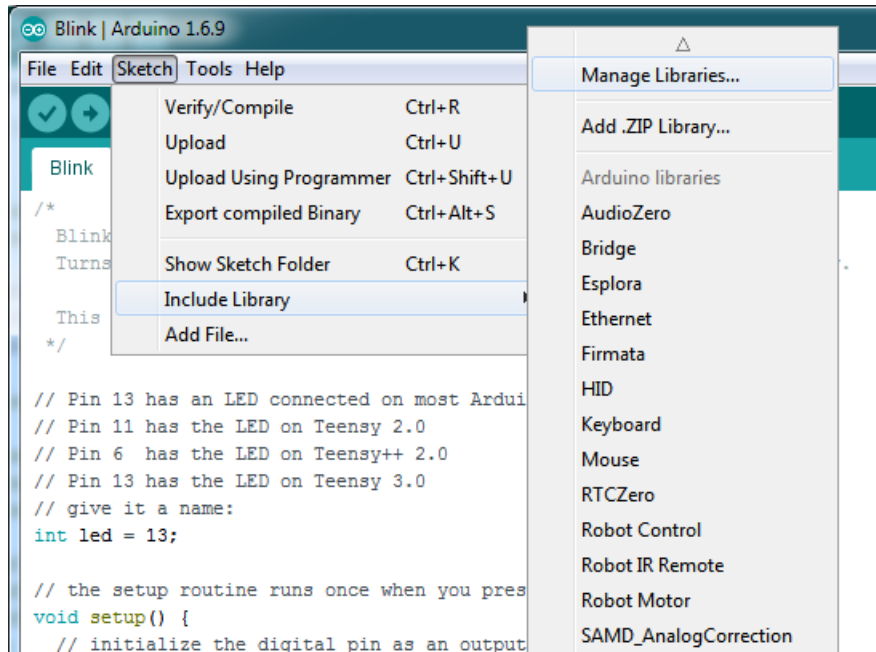
- **CS** - Connect to any digital I/O pin, we use #8 by default
- **EN** - connect this to 3.3V or 5V, whichever is the logic voltage of the microcontroller you're using. For UNO this will be 5V, for Zero its 3.3V; later on if you want to enable/disable the module, connect it to a digital I/O pin
- **IRQ** - Connect to any digital I/O pin, preferably one with an interrupt capability. We use #7 by default
- **RST** - Connect to any digital I/O pin. We use #4 by default

You can change these pins later but for now use them, so you can verify your setup!

Install the Library

We will start by installing the [official Arduino WiFi101 library \(https://adafruit.it/kUF\)](https://adafruit.it/kUF).

We want the latest version so visit the Library Manager



Type in wifi101 and when the library comes up, click **Install** or **Update** to make sure its the most recent one!

If you're not familiar with installing Arduino libraries, please visit our tutorial: [All About Arduino Libraries \(https://adafruit.it/aYM\)](https://adafruit.it/aYM)!

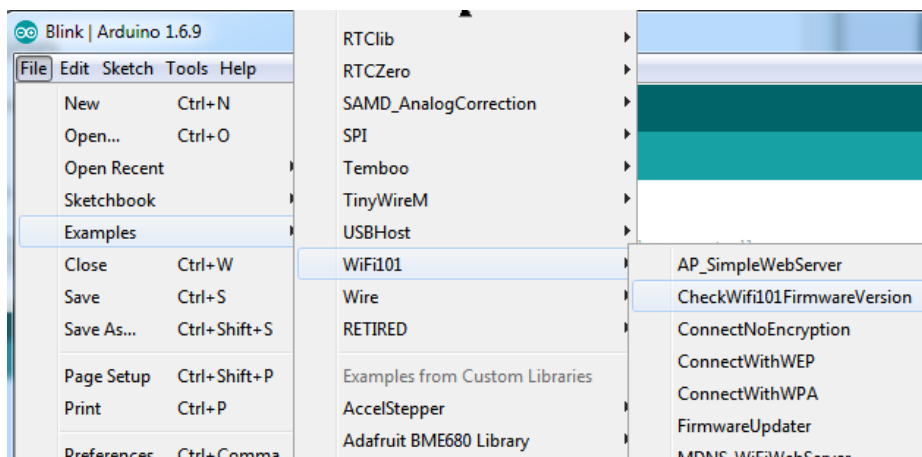
Restart the Arduino IDE.

Use the very latest version of the Arduino IDE!

Check Connections & Version

Before we start, its important to verify you have the right setup & firmware version.

Load up the **WiFi101->CheckWifi101Firmware** sketch

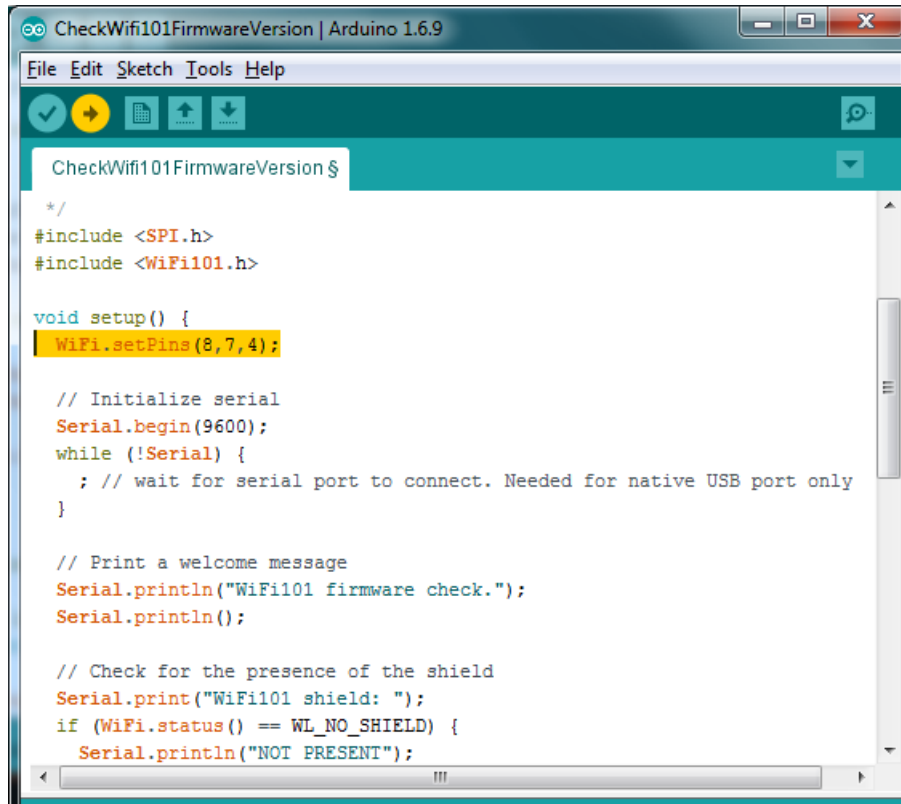


Note that to use the official Arduino WiFi101 Library, we must configure it to use the pins specific to the

ATWINC1500 Breakout. With each example sketch, you'll need to add `WiFi.setPins(8,7,4);` to the top of the setup function, before `WiFi.status()` is called.

```
//Configure pins for Adafruit ATWINC1500 Breakout
WiFi.setPins(8,7,4);
```

Like so:



```
CheckWifi101FirmwareVersion $
*/
#include <SPI.h>
#include <WiFi101.h>

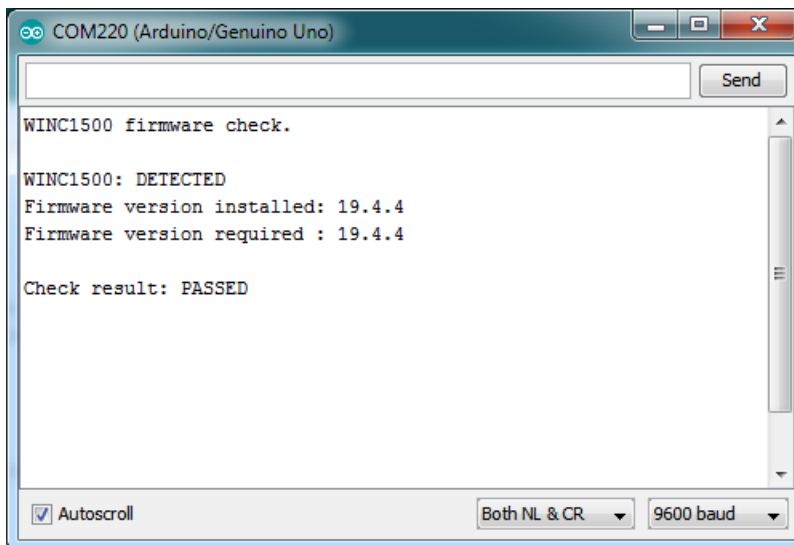
void setup() {
  WiFi.setPins(8,7,4);

  // Initialize serial
  Serial.begin(9600);
  while (!Serial) {
    ; // wait for serial port to connect. Needed for native USB port only
  }

  // Print a welcome message
  Serial.println("WiFi101 firmware check.");
  Serial.println();

  // Check for the presence of the shield
  Serial.print("WiFi101 shield: ");
  if (WiFi.status() == WL_NO_SHIELD) {
    Serial.println("NOT PRESENT");
```

Upload to your Arduino and open up the Serial Console at 9600 baud:



```
COM220 (Arduino/Genuino Uno)
Send
WINC1500 firmware check.

WINC1500: DETECTED
Firmware version installed: 19.4.4
Firmware version required : 19.4.4

Check result: PASSED

Autoscroll Both NL & CR 9600 baud
```

You should see the firmware version. If your version has not **PASSED** follow [this page to update your firmware!](https://adafru.it/vff) (<https://adafru.it/vff>)

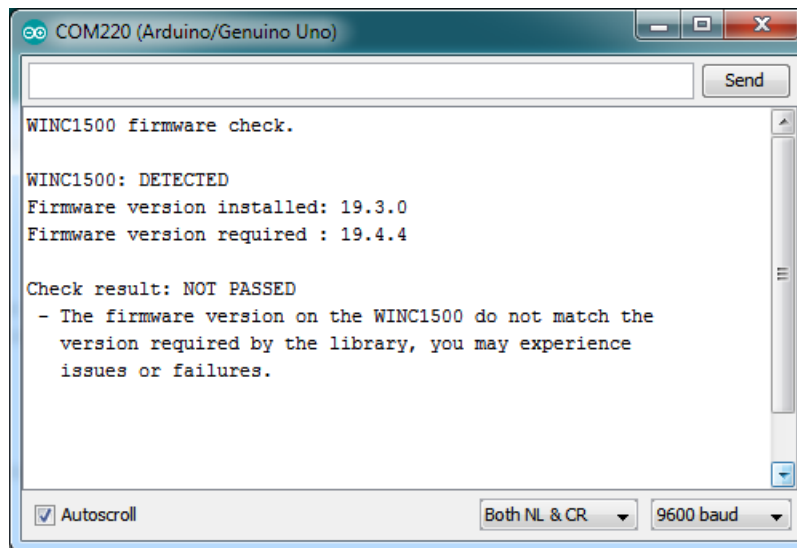
If you have version 19.3 or less, the firmware is too old

If you get not response, the firmware is either waaay to old, or something is amiss with your wiring!

If you get a warning that says

```
WiFi101 shield: DETECTED
Firmware version installed: 19.5.2
Latest firmware version available : 19.5.4
```

Specifically with **19.5.4** and **19.5.2**, you can continue without updating

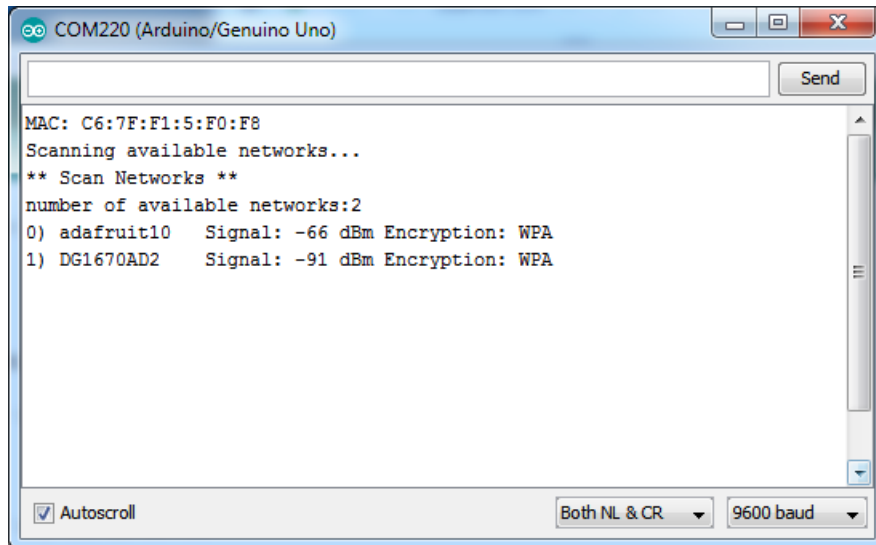


Scanning WiFi

Now that you have the right firmware version, lets scan for network!

Run the **WiFi101->ScanNetworks** example to see a list of available visible networks

Don't forget to add `WiFi.setPins(8,7,4)` at the top of `setup()`



Connect & Read Webpage

OK finally you get to connect and read some data!

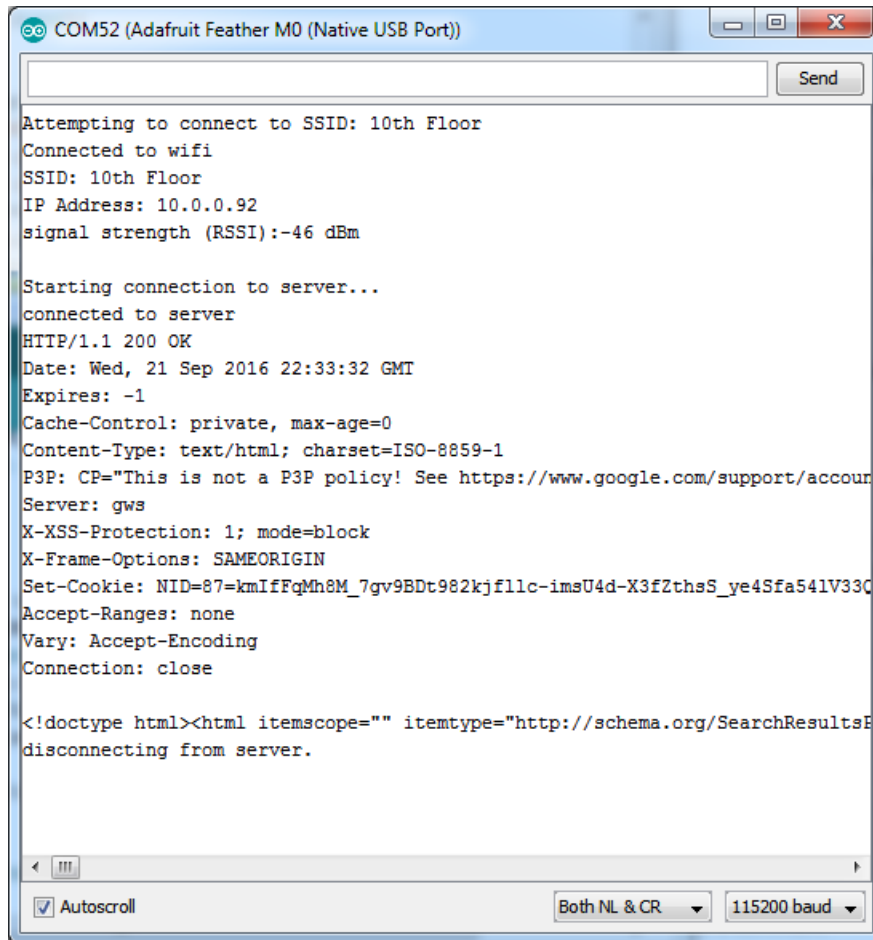
Open up the **WiFi101->WiFi101WebClient** example, then edit the **ssid** and **pass** variables to contain your network and password

```
34
35
36 char ssid[] = "adafruit"; // your network SSID (name)
37 char pass[] = "supersekret"; // your network password (use for WPA, or use as key for WEP)
38 int keyIndex = 0; // your network key Index number (needed only for WEP)
39
40 int status = WL_IDLE_STATUS;
41 // if you don't want to use DNS (and reduce your sketch size)
42 // use the numeric IP instead of the name for the server:
43 // IP address of the website you want to connect to (e.g. 192.168.1.1)
```

Add the following lines at the top of setup()

```
//Configure pins for Adafruit ATWINC1500 Feather
WiFi.setPins(8,7,4);
```

It will connect to the website in **server** and read the **webpage** manually:



```
COM52 (Adafruit Feather M0 (Native USB Port))
Attempting to connect to SSID: 10th Floor
Connected to wifi
SSID: 10th Floor
IP Address: 10.0.0.92
signal strength (RSSI):-46 dBm

Starting connection to server...
connected to server
HTTP/1.1 200 OK
Date: Wed, 21 Sep 2016 22:33:32 GMT
Expires: -1
Cache-Control: private, max-age=0
Content-Type: text/html; charset=ISO-8859-1
P3P: CP="This is not a P3P policy! See https://www.google.com/support/accoun
Server: gws
X-XSS-Protection: 1; mode=block
X-Frame-Options: SAMEORIGIN
Set-Cookie: NID=87=kmIfFqMh8M_7gv9BDt982kjf11c-imsU4d-X3fZthsS_ye4Sfa541V33C
Accept-Ranges: none
Vary: Accept-Encoding
Connection: close

<!doctype html><html itemscope="" itemtype="http://schema.org/SearchResultsE
disconnecting from server.
```

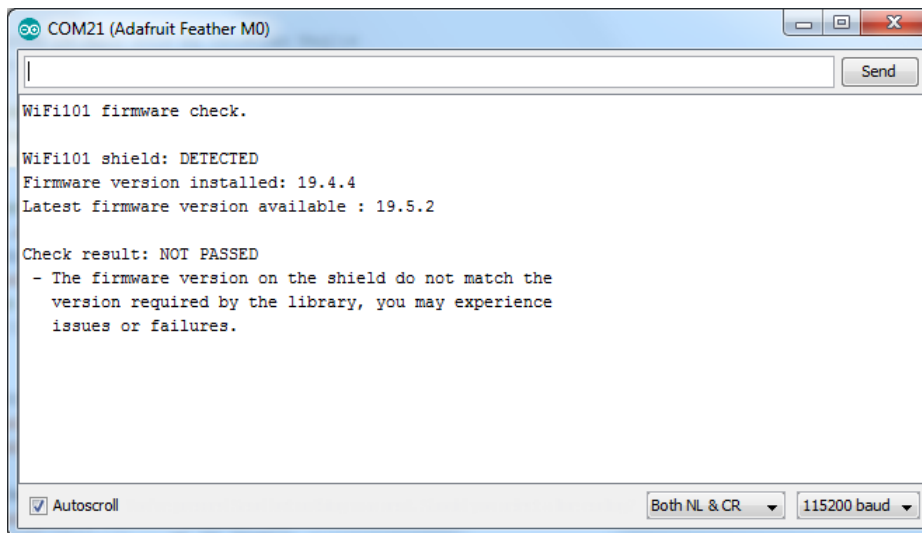
Autoscroll Both NL & CR 115200 baud

That's it! pretty easy, huh? There's other examples you can try such as server mode, UDP data transmission & SSL

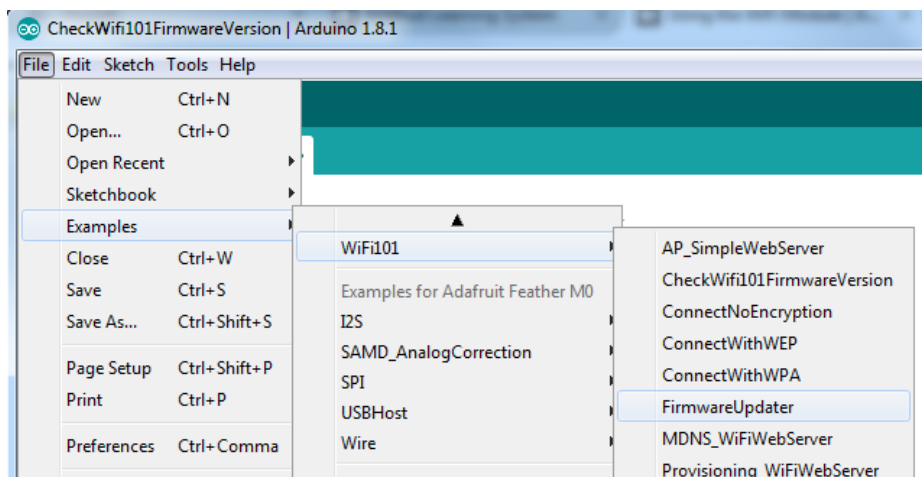
Updating Firmware

If you're running 19.5.2 there is no need to update to 19.5.4, despite what the WiFi101 library says it should work just fine and you could brick your device by updating, it is not perfectly foolproof! Thanks :)

As new versions of the WiFi101 library come out, you may end up getting a complaint that the library and WINC1500 firmware are out of sync:

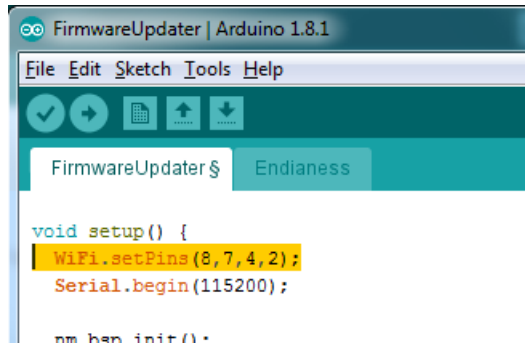


No problem - you can update the firmware through your Arduino/compatible! Start by loading up the **FirmwareUpdater** sketch



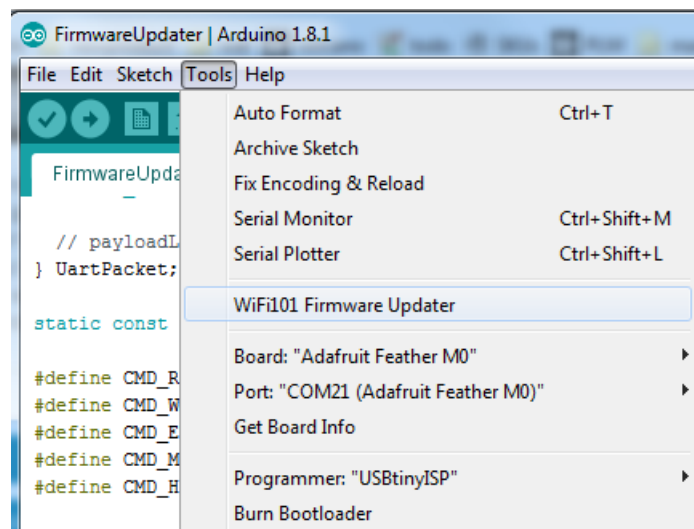
If you are using a Feather M0 or WINC1500 breakout, don't forget to update the pins as necessary with `setPins()`!

If you are using a WiFi101 or WINC1500 shield, you do not have to add `setPins()` code

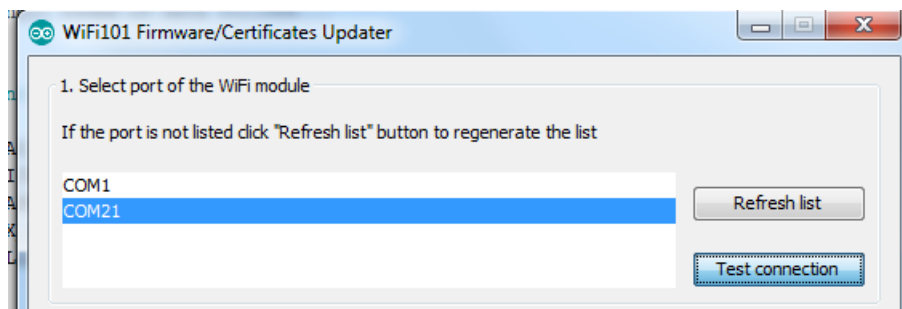


Upload it to your board. Make sure the Serial console is not open before or after uploading.

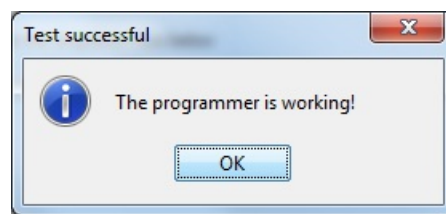
Then select the Updater tool built into the IDE



Select the right COM port, and click Test Connection

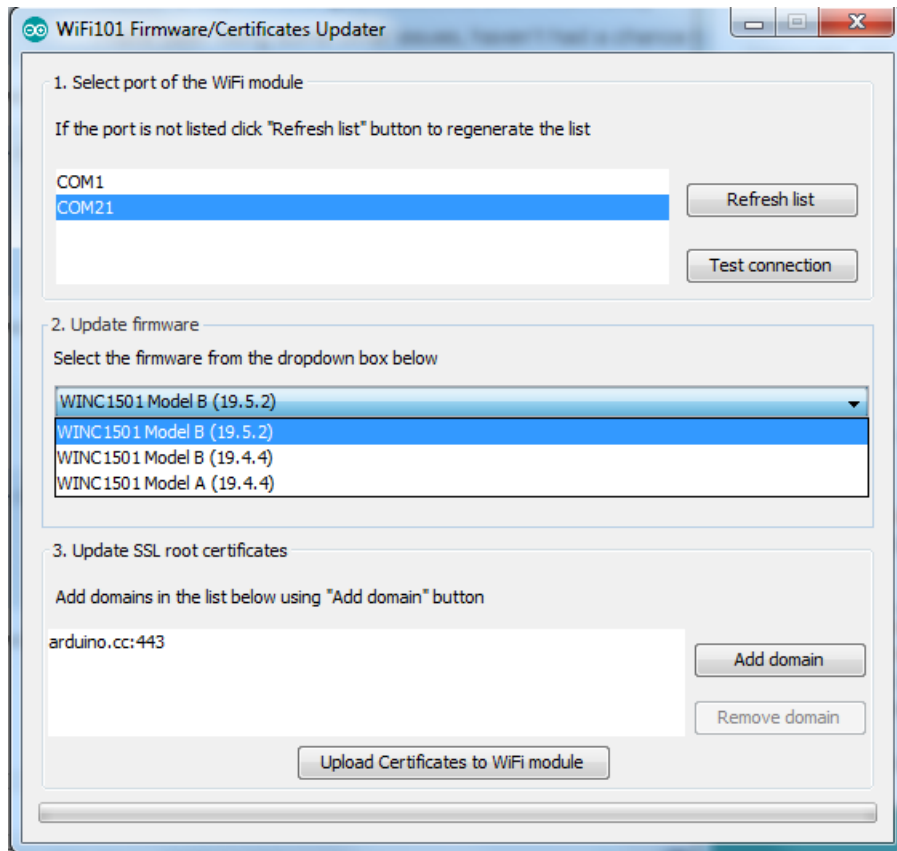


If all is good you'll get a confirmation

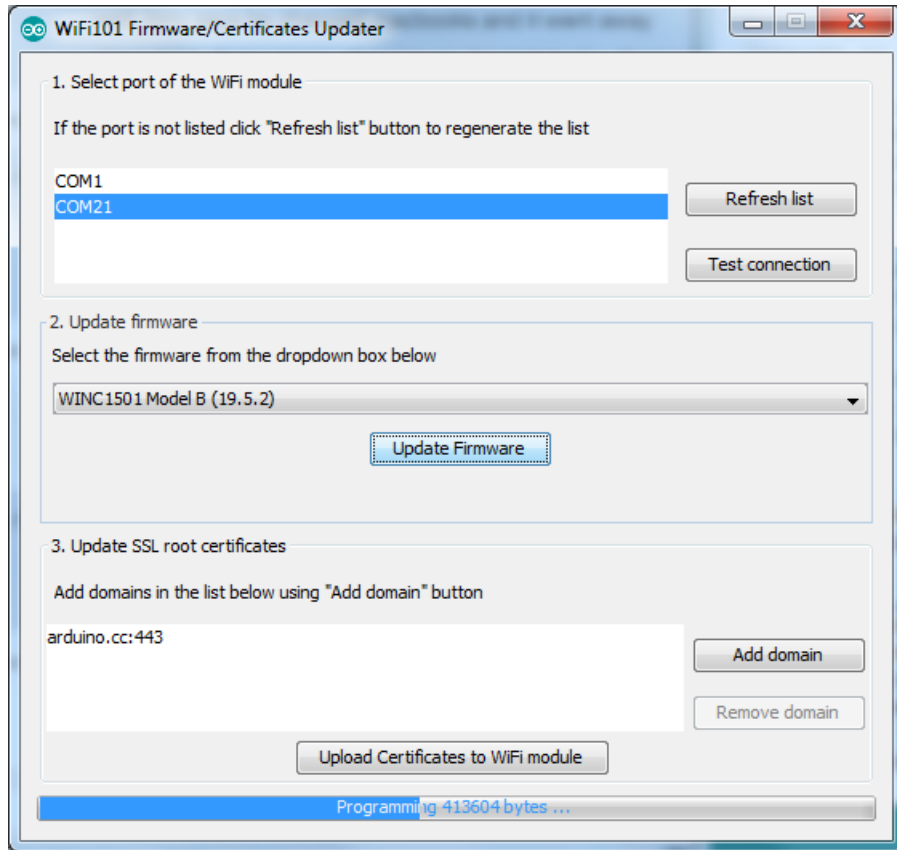


Next, select the firmware - we of course recommend the latest version!

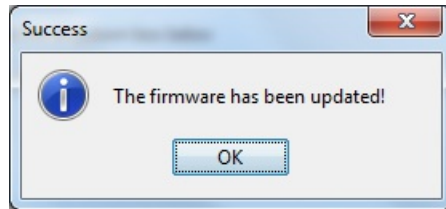
If you don't see the right/matching version you may need to update the IDE



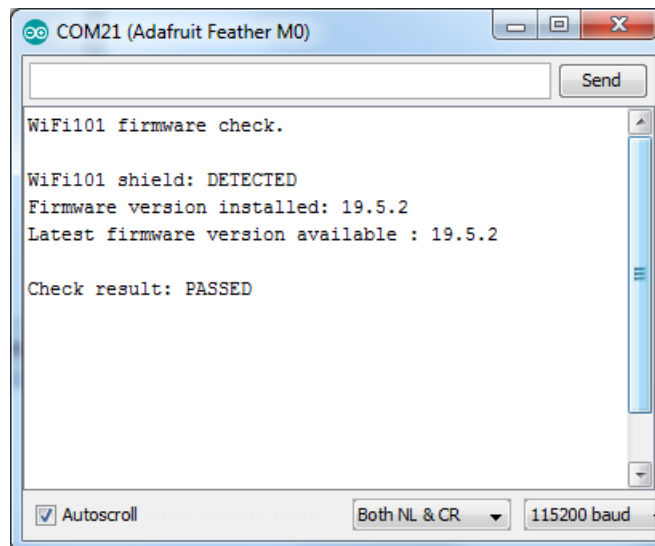
Once you feel ready - make sure the USB cable is connected solidly! Click **Update Firmware**



And a minute or two later...



Now you're ready to rock! Reload the Firmware Check sketch from before, this time you will see:

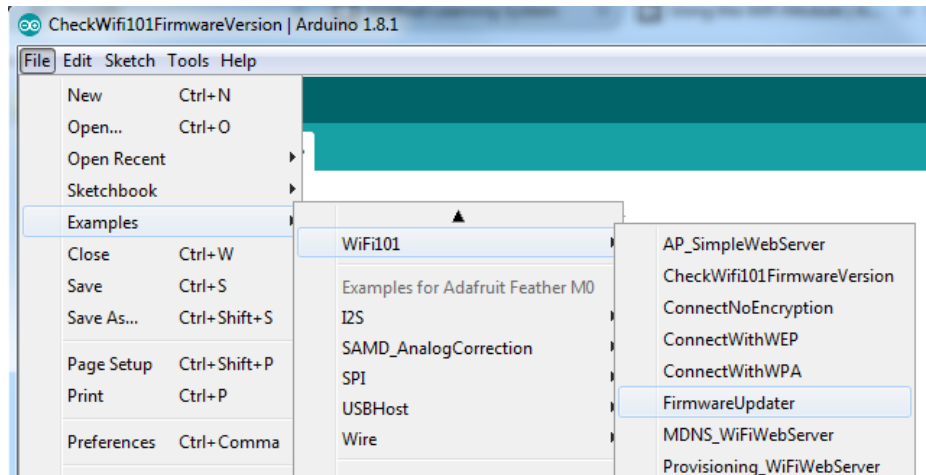


Updating SSL Certificates

If you're trying to connect to a computer or service via SSL and the connection is failing, you may need to update the certificates built into the WINC1500. By default it comes with many of the most popular SSL certificates but you may bump into a site that requires one that isn't included.

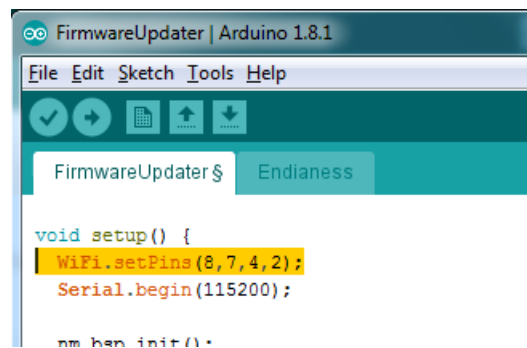
It's quite easy to update the certificates, you'll need to upload some code and run the uploader but it only has to happen once.

Start out by uploading the **FirmwareUpdater** sketch from **WiFi101**



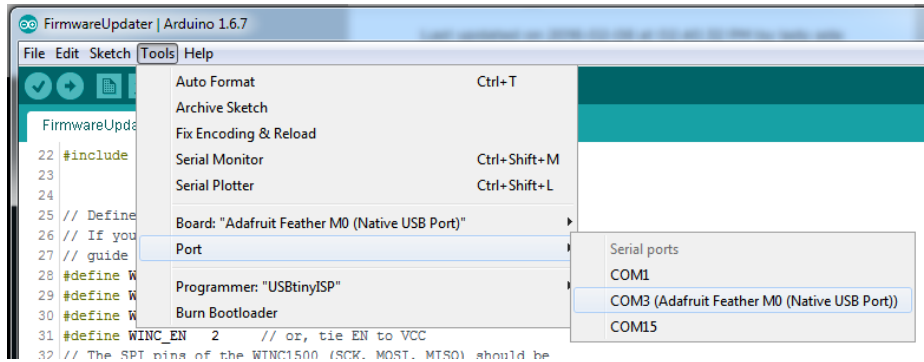
If you are using a Feather M0 or WINC1500 breakout, don't forget to update the pins as necessary with `setPins()`!

If you are using a WiFi101 or WINC1500 shield, skip this step



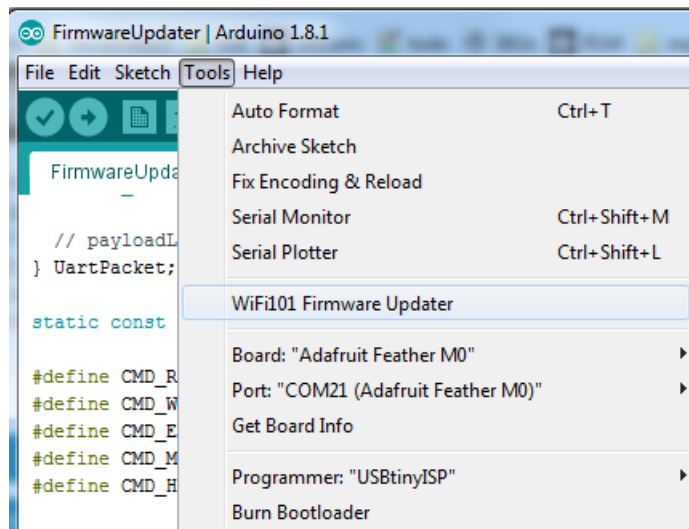
and upload it!

After uploading be sure to note what is the name of the COM or Serial port for the Arduino Zero or Feather...You'll need this for the next step

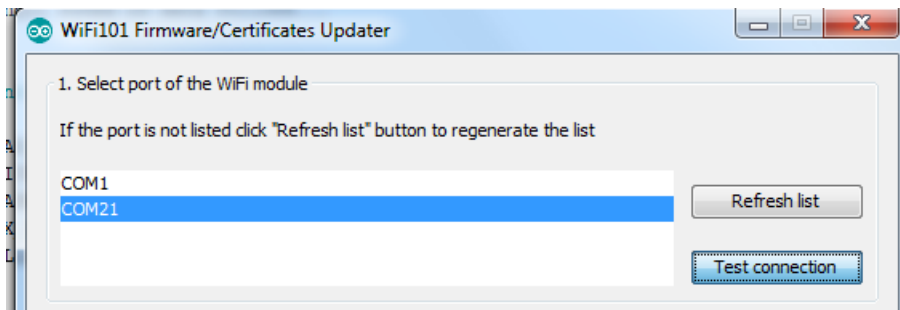


Upload it to your Feather. Make sure the Serial console is not open before or after uploading.

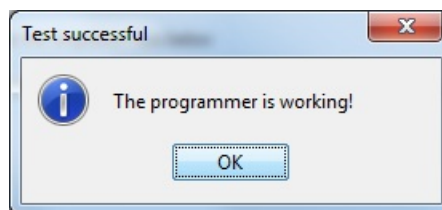
Then select the Updater tool built into the IDE



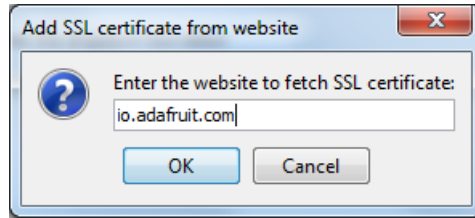
Select the right COM port, and click Test Connection



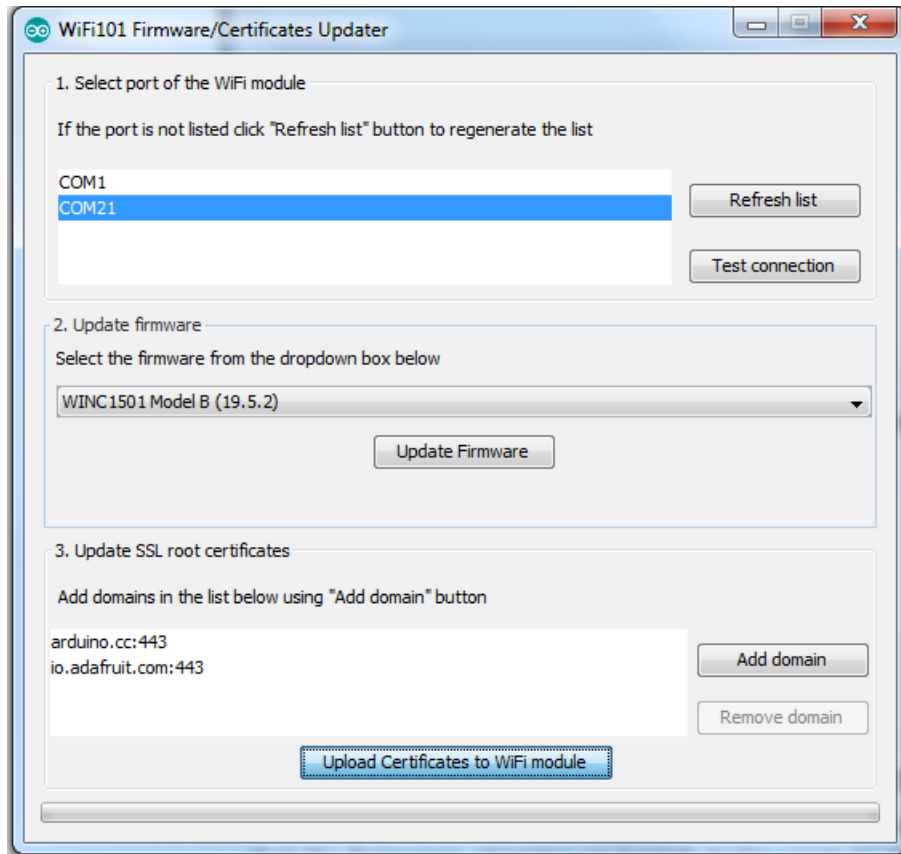
If all is good you'll get a confirmation



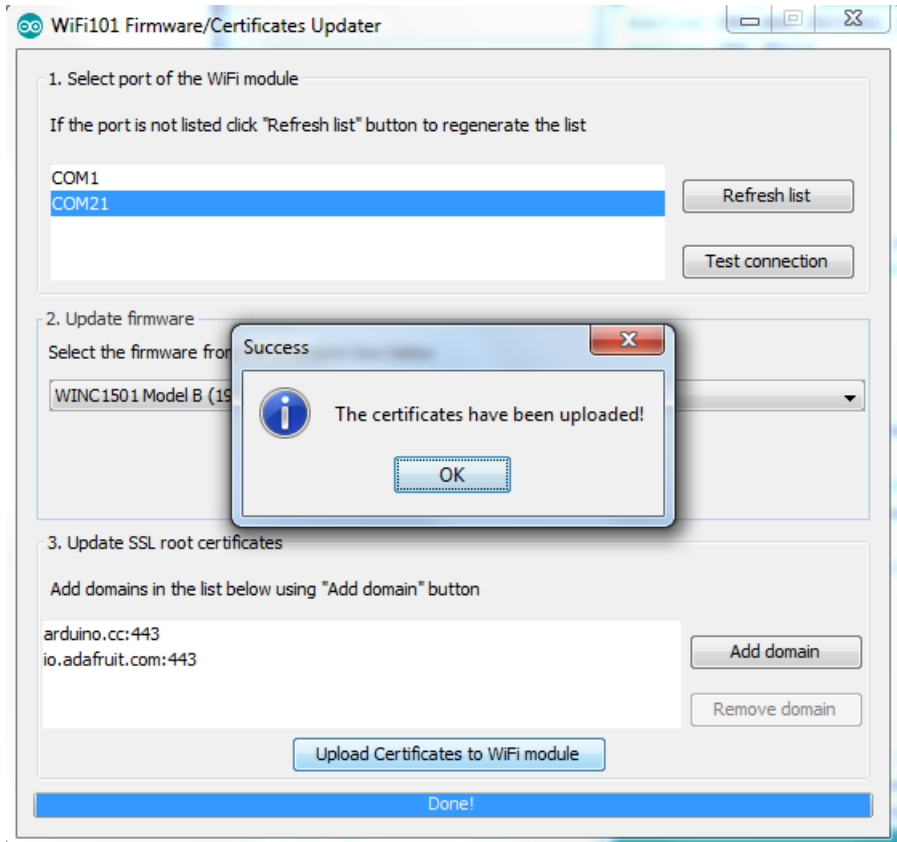
Now at the bottom of the page, click **Add Domain** and type in the URL of the site you want to access:



Then click **Upload Certificates**



A few moments later...success!



What SSL/TLS support is available with the WINC1500?

Officially Atmel lists TLS 1.0 & 1.1, however we have noticed that the firmwares shipping on boards today seem to also support TLS 1.2 (verified by checking the results of www.howssmyssl.com).

The supported ciphers are:

TLS_DHE_RSA_WITH_AES_128_GCM_SHA256
TLS_RSA_WITH_AES_128_GCM_SHA256
TLS_DHE_RSA_WITH_AES_128_CBC_SHA256
TLS_DHE_RSA_WITH_AES_128_CBC_SHA
TLS_RSA_WITH_AES_128_CBC_SHA256
TLS_RSA_WITH_AES_128_CBC_SHA

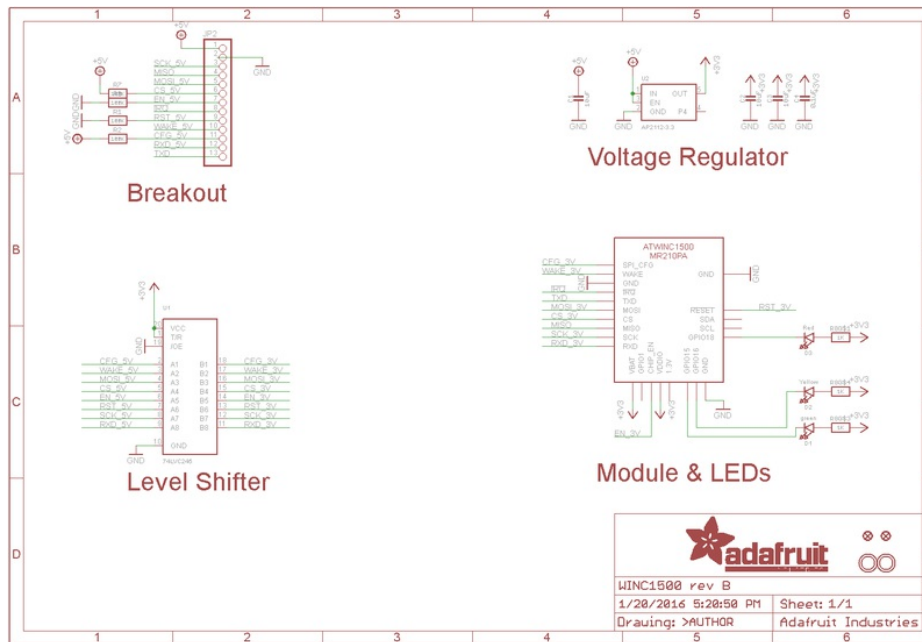
Downloads

Datasheets & Files

- All the details you could ever want are over at the Atmel website (<https://adafru.it/kUD>)
- EagleCAD PCB files on GitHub (<https://adafru.it/oeL>)
- Fritzing objects in the Adafruit Fritzing library (<https://adafru.it/aP3>)

Schematic

Click to embiggen. Please note we ship with the 'PB rev module, not 'PA!



Fabrication Print

Dimensions in inches

