



SPECIFICATION FOR APPROVAL

TO: _____

PART NO.		REV.		DELTA SAMPLE ISSUE NO	
PART NAME	EMI FILTER			DELTA MODEL	10RPG5
ORDER P/N.	10RPG5			SAMPLE ISSUE DATE	

1. ELECTRICAL CHARACTERISTICS:

1-1. VOLTAGE RATING 75V DC MAX.

1-2. CURRENT RATING

A. AT 75VDC 10A Max.

1-3. OPERATING FREQUENCY..... 50/60 Hz

1-4. HIPOT RATING (FOR ONE MINUTE)

A. LINE TO GROUND 1500VDC

B. LINE TO LINE 100VDC

1-5. TEMPERATURE RANGE: -40 TO +100 DEGREE C

1-6. MINIMUM INSERTION LOSS IN dB: (AT 50 OHM SYSTEM)

FREQ. MHz	.01	.05	.10	.15	.50	1.0	5.0	10	30
COM. MODE dB	/	5	8	10	30	35	50	40	20
DIF. MODE dB	10	20	25	25	25	30	30	50	30

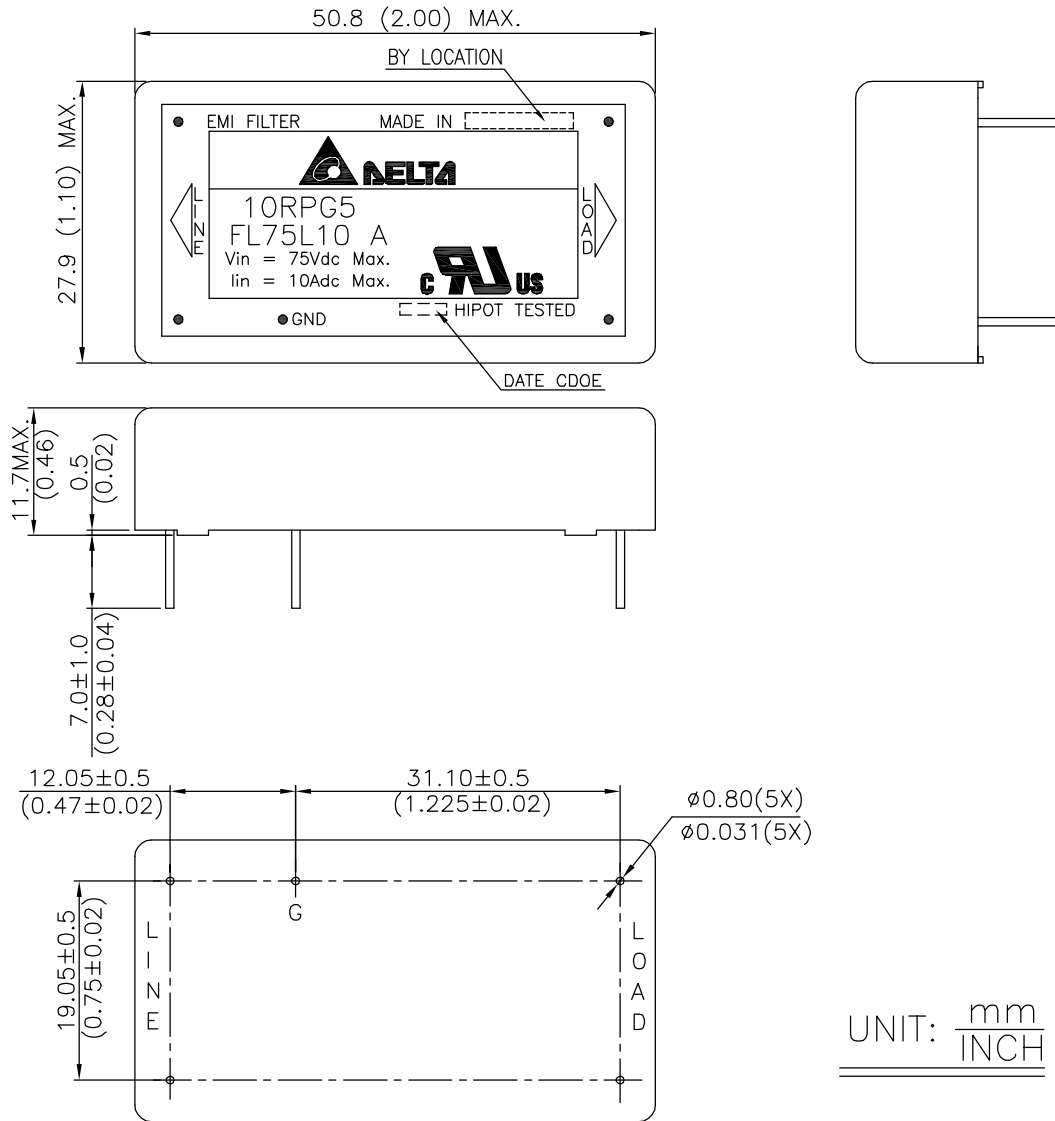
1-7. SAFETY



REPORT BY	CHECKED BY	APPROVED BY		
			REV.	

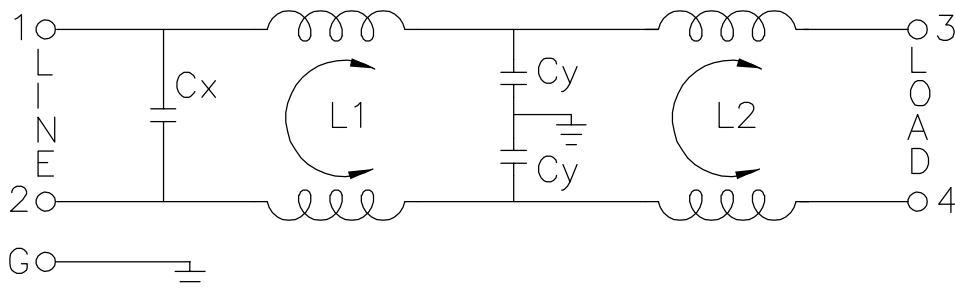
PART NO.		REV.		DELTA SAMPLE ISSUE NO	
PART NAME	EMI FILTER		DELTA MODEL	10RPG5	
ORDER P/N.	10RPG5		SAMPLE ISSUE DATE		

2. PHYSICAL DIMENSIONS:



UNIT: $\frac{\text{mm}}{\text{INCH}}$

3. SCHEMATIC:



L1: 80.0uH
 L2: 0.85mH
 Cx: 4.7uF
 Cy: 4700pF

REPORT BY	CHECKED BY	APPROVED BY	UNLESS OTHERWISE SPECIFIED DIMENSION TOLERANCE DCEIMALS .X± .XX± ANGLES±		
			REV.		