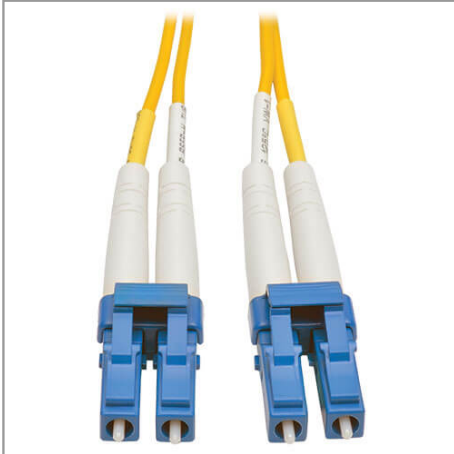


Duplex Singlemode 8.3/125 Fiber Patch Cable (LC/LC), 40 m (131 ft.)

MODEL NUMBER: **N370-40M**



Premium singlemode fiber optic cabling transmits fast, clear data signals through your LAN with data transfer speeds up to 10 Gbps.

Description

The N370-40M Duplex Singlemode 8.3/125 Fiber Patch Cable transmits fast, clear data signals through your LAN with data transfer speeds up to 10 Gbps. Designed for network equipment that requires singlemode fiber optic patch cables, this 40-meter (131-foot) cable has attenuation loss that meets or exceeds current standards.

The FDDI-rated N370-40M has 8.3/125 duplex (zipcord) fiber made from glass, instead of polymer. The sturdy LC male connectors meet stringent insertion loss standards and feature beveled edges on their glass ends for easy insertion into a patch panel or switch. The OFNR-rated PVC jacket is yellow to easily identify it as a singlemode cable.

Features

Fast, Clear Data Transmission Through Your LAN

- Data transfer speeds up to 10 Gbps
- Ideal for network equipment that requires singlemode fiber optic patch cables
- Attenuation loss meets or exceeds latest industry standards

Superior Construction for Error-Free Signal Transfer

- 8.3/125 duplex (zipcord) fiber made from glass
- Sturdy LC male connectors meet stringent insertion loss standards
- Beveled edge on glass ends for easy plug insertion
- Yellow-colored for identification as singlemode

Highlights

- Attenuation loss meets or exceeds latest industry standards
- 8.3/125 duplex (zipcord) fiber made from glass
- LC male connectors meet insertion loss standards
- FDDI- and OFNR-rated
- Beveled edge on glass ends for easy plug insertion

System Requirements

- Fiber optic hardware or NIC card requiring singlemode duplex cable with LC/LC connectors

Package Includes

- N370-40M Duplex Singlemode 8.3/125 Fiber Patch Cable, 40 m



Specifications

OVERVIEW	
UPC Code	037332195777
Clad Diameter	125 micron
Core Diameter	8.3 micron
Number of Fibers	2
Optical Mode	OS2
INPUT	
Cable Length (ft.)	131.2
Cable Length (m)	40
Cable Length (in.)	1574.8
PHYSICAL	
Color	Yellow
Shipping Dimensions (hwd / cm)	30.48 x 26.67 x 1.27
Shipping Dimensions (hwd / in.)	12.00 x 10.50 x 0.50
Shipping Weight (kg)	0.31
Shipping Weight (lbs.)	0.68
COMMUNICATIONS	
Network Speed	10Gbps
CONNECTIONS	
Side A - Connector 1	LC DUPLEX (MALE)
Side B - Connector 1	LC DUPLEX (MALE)
FEATURES & SPECIFICATIONS	
Technology	Singlemode
SPECIAL FEATURES	
Push/Pull Tabs	No
CERTIFICATIONS	
Approvals	FDDI and OFNR rated
WARRANTY	



Tripp Lite
1111 W. 35th Street
Chicago, IL 60609 USA
Telephone: 773.869.1234
www.tripplite.com

Product Warranty Period (Worldwide)	Lifetime limited warranty
--	---------------------------

© 2019 Tripp Lite. All rights reserved. All product and company names are trademarks or registered trademarks of their respective holders. Use of them does not imply any affiliation with or endorsement by them. Tripp Lite has a policy of continuous improvement. Specifications are subject to change without notice. Tripp Lite uses primary and third-party agencies to test its products for compliance with standards. See a list of Tripp Lite's testing agencies:
<https://www.tripplite.com/products/product-certification-agencies>