



Electrical Specifications

Center Frequency: 5800 MHz

Pole: 3

Bandwidth: 300 MHz

Passband: 5650-5950 MHz

Insertion Loss: 2.0 dB Max

Ripple in Bandwidth: 0.5 dB Max

VSWR (Fo): 1.5:1 Min

Attenuation: >20 dB @ 5000 MHz

>40 dB @ 3700 MHz

>20 dB @ 6300 MHz

>20 dB @ 8000 MHz

Impedance: 50Ω

Input Power: 2 W CW Max

Mechanical

Mounting Method: SMT

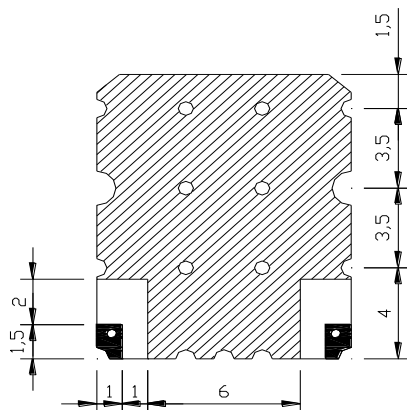
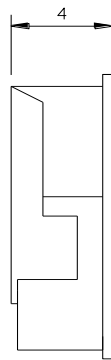
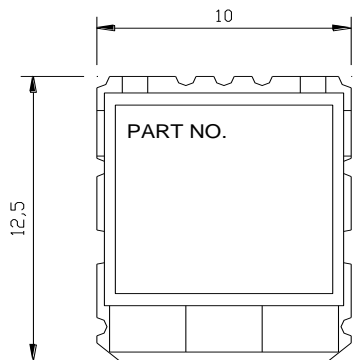
Dimensions: 12.5 x 10.0 x 4.0 mm

Environmental

Operating Temperature: -40 to +85° C

This product is RoHS compliant.

Outline Drawing:



Unit:mm

Tolerance:+/-0.3



Ground



I/O PORT