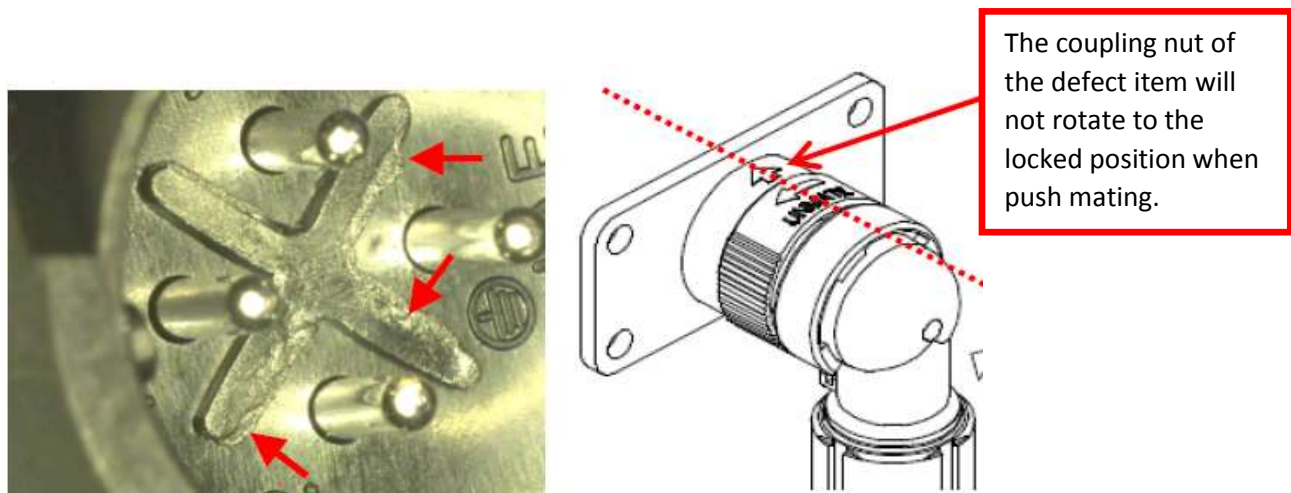


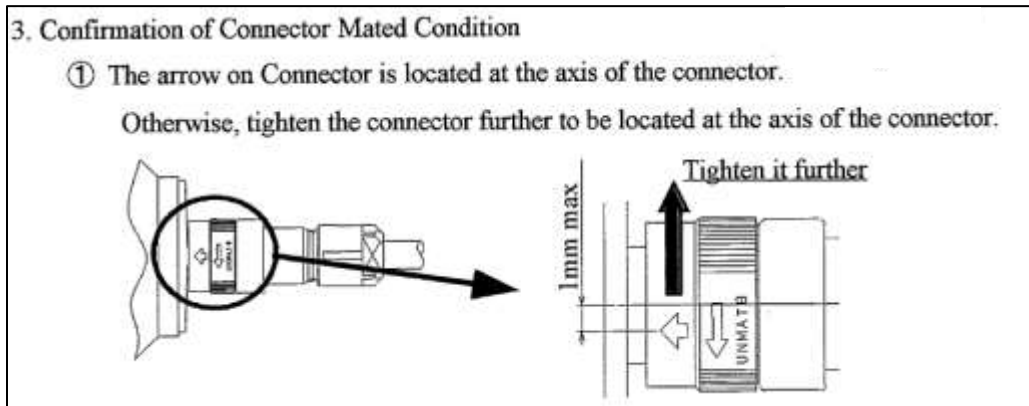
Potential JN1AS04MK1 Receptacle Defect

JAE found that the convex X on the JN1AS04MK1 (JN-Series, 4 position receptacle) has collapsed in certain areas causing the coupling nut on the plug to not lock when mated. Please see image below for how this part should look when mated properly (the arrow on the connector should be on the axis shown in red).



1. Affected Defect Material:

If the product functions properly as shown in JAHL-5111, the product is not defective (please see excerpt from JAHL-5111 below for proper mating condition). A replacement will need to be issued for products that are not functioning properly.



2. Defect Period:

The defective materials were shipped out of JAE Electronics, Inc. during the period:
June 2017 – September 2017

All material outside of this date range are deemed to be fully functioning and not subject to this defect claim.

3. Defective Lot Codes:

The suspected defective material were of the following lot codes:

K170517, K170525, K170526, K170623, K170718, K170725, K170804, K170824,
K170829, K170905, K170911 and K170913

4. Replacement Material:

To cover potential defects, JAE Electronics, Inc. will replace quantities shipped during the defective period free of charge.

When defective materials are located they will need to be replaced by the pre-shipped replacement.

5. Scrapping of Defective Material:

We urge all defective material to be scrapped at shipped site.

6. Others:

Please contact JAE Electronics If you have any questions .

Thank you for your cooperation.

