



ANATECH ELECTRONICS, INC.

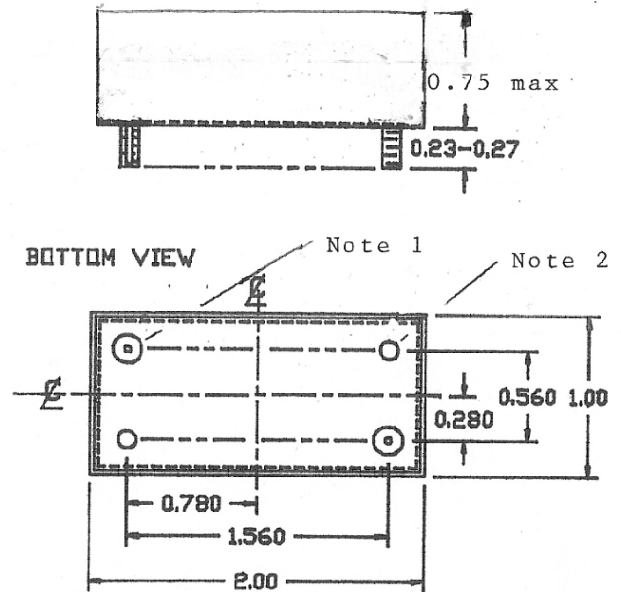
Manufacturer of RF & Microwave Filters and Products



23.715 MHz Crystal Filter

P/N: AM23.715CR223

Center Frequency (C.F.): 23.715Mhz
 Insertion Loss: 3db max
 3db Bandwidth @ C.F. +/-30Khz to C.F. +/-40Khz
 Return Loss: 15db min at C.F.
 60db stopband rejection at C.F. +/-160Khz
 Max power- 0dbm
 Passband Ripple: 1db max
 Source & Load Impedance: 50 ohms
 Stopband Spurious: 60db min.
 Operating Temperature: -20°C to +55°C
 Filter shall be designed to meet vibration of:
 15G from 10 to 2000hz per mil std 202.
 Size: 2 X 1 X 0.75" (L X W X H)



Note 1: 0.030 term '1 (2PL)
 Note 2: Weld stud 4-40 UNC-2A (2 PL)
 Note 3: Tolerances: XX +/- .02"
 XXX +/- .005"

