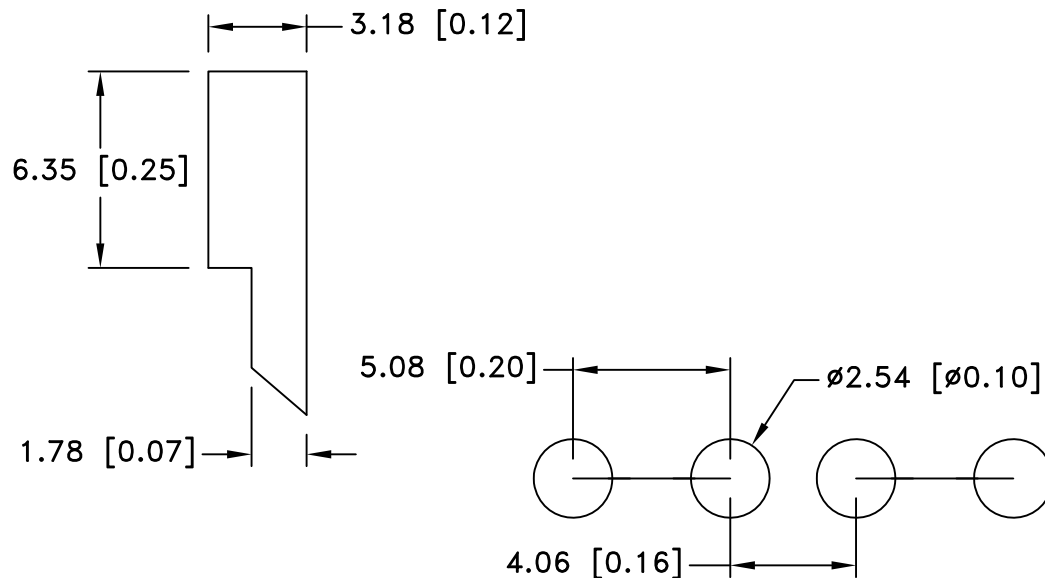
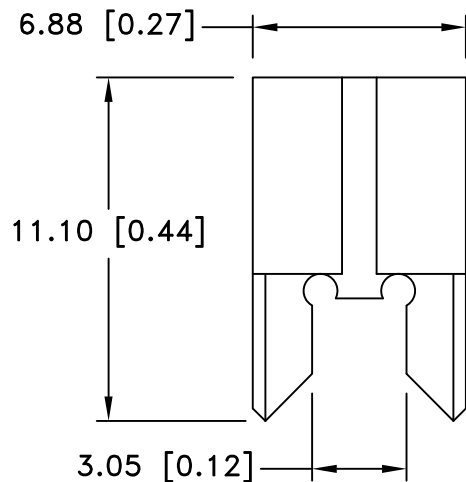



Date	SYM	REVISION RECORD	AUTH	DR.	CK.
2/07/14	A	Updated Specification	T B	B S	



MOUNTING DETAIL FOR 2 CLIPS

SPECIFICATION:

Current Rating: 30 Amps
 Fuse Entry: Vertical
 Fuse Type: Automotive
 Material: .016 [0.40] Brass, Nickel Plate
 Mounting: THM
 Style: CLIP
 Fuse Reference: Littelfuse ATO 257 series / Bussmann ATC series / APR / or equivalent
 Fuse Size: Standard
 ROHS 2 COMPLIANT

Tolerance (Except as noted)	 Memory Protection Devices, Inc 200 Broad Hollow Road, Farmingdale, New York 11735	Scale	Drawn By B.S.
			Approved By T.B.
decimal ±.5 (.020)	Title		
Fractional ± .8 (.030)	AUTO FUSE CLIP FOR .205 x .025 STANDARD BLADE FUSES		
Angular ± 3°	Date 02/07/14	Drawing Number BK-6006	