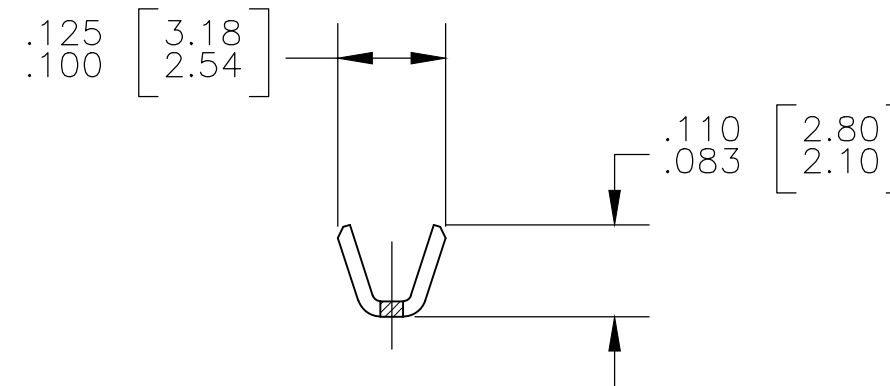
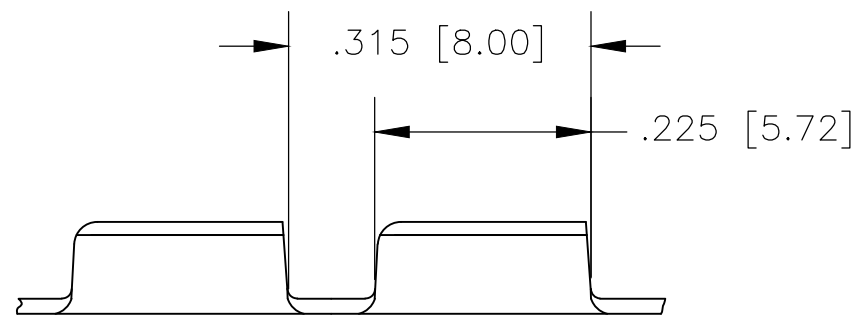
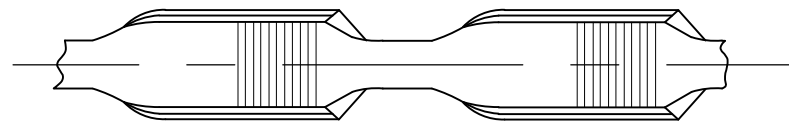



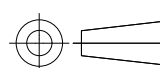
REVISIONS

P	LTR	DESCRIPTION	DATE	DWN	APVD
	B1	PRODUCT DESCRIPTION UPDATED	30JUL2020	MB	TD



- 1 PRODUCT SUPPLIED IN STRIP FORM ON REELS  
BREAKS MAY BE PRESENT
- 2 DIMENSIONS IN BRACKETS ARE IN MM
- 3 CMA RANGE: 400-1500
- 4 CRIMP WIDTH: .080 F(AMPLIVAR TYPE)  
CRIMP HEIGHT ( $\pm 0.002$ ) = (TOTAL CMA +5320)/139,200  
GENERAL APPLICATION GUIDELINES MUST BE  
FOLLOWED AS SPECIFIED IN CATALOG #  
FOR APPLICATOR INFORMATION CALL: 1-800-722-1111  
FOR PRODUCT INFORMATION CALL: 1-800-522-6752
- 5 USE WITH ALUMINIUM OR COPPER MAGNET WIRE  
IN COMBINATION WITH STRANDED COPPER LEAD WIRE.

5	TIN PLATED	.016[0.41] BRASS	2825180-2
No. of Serrations	Finish	Material	Part Number

THIS DRAWING IS A CONTROLLED DOCUMENT.		DWN SENTHIL 28JAN2016	 <b>TE Connectivity</b>		
DIMENSIONS: INCHES		CHK SENTHIL 28JAN2016			
		APVD RAJENDRA 28JAN2016			
TOLERANCES UNLESS OTHERWISE SPECIFIED:		NAME	AMPLIVAR SPLICE 5 SERRATIONS		
0 PLC $\pm -$		PRODUCT SPEC	-		
1 PLC $\pm -$		108-64051			
2 PLC $\pm -$		APPLICATION SPEC			
3 PLC $\pm .005$		114-64001	SIZE	CAGE CODE	DRAWING NO
4 PLC $\pm -$		WEIGHT	A3 00779		C-2825180
ANGLES $\pm 2'0$		CUSTOMER DRAWING	SCALE	SHEET	REV
MATERIAL SEE TABLE	FINISH SEE TABLE		5:1	1 OF 1	B1