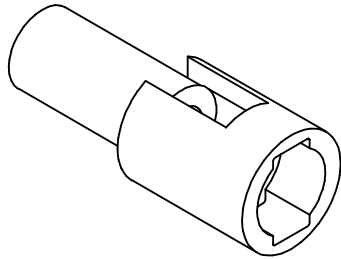
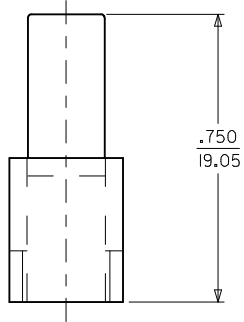
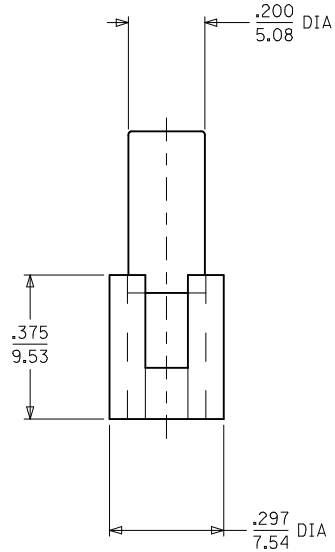
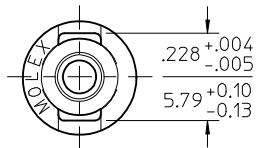
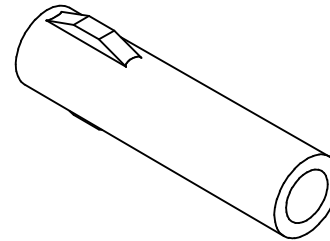
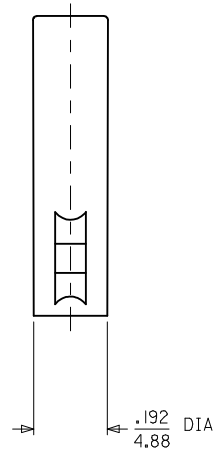
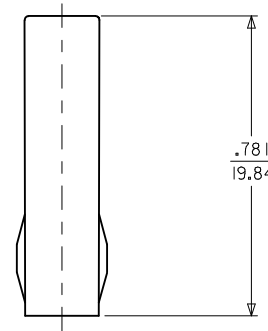
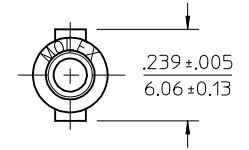


**PLUG**



**PLUG HOUSING**

**RECEPTACLE**

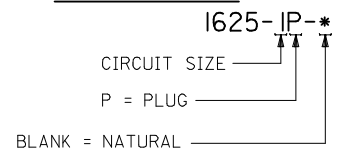


**RECEPTACLE HOUSING**

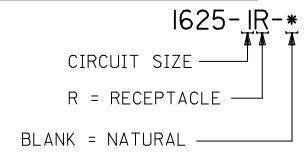
ADD .228 DIMENSION EC NO: UCP2015-4538 DRW:MKIPPER 2015/05/01 CHKD:JBELL 2015/05/04 APPR:FSMITH 2015/06/04	QUALITY SYMBOLS	GENERAL TOLERANCES (UNLESS SPECIFIED)	DIMENSION STYLE	SCALE	DESIGN UNITS	THIRD ANGLE PROJECTION
	▽=0	mm INCH	IN/MM	4:1	INCH	
	▽=0	4 PLACES ± --- ± ---	DRAWN BY DATE	TITLE		
	▽=0	3 PLACES ± --- ± .010	JBS 2003/06/10	PLUG & RECEPTACLE 1 CIRCUIT		
REV	DESCRIPTION	2 PLACES ± 0.25 ± .014	CHECKED BY DATE	mox DOCUMENT NO. SD-1625-1*-*- SHEET NO. 1 OF 2		
J2		1 PLACE ± 0.35 ± ---	BW 2003/06/16			
		0 PLACE ± --- ± ---	APPROVED BY DATE	THIS DRAWING CONTAINS INFORMATION THAT IS PROPRIETARY TO MOLEX INCORPORATED AND SHOULD NOT BE USED WITHOUT WRITTEN PERMISSION		
		ANGULAR ± 1 °	FSMITH 2014/07/09			
		DRAFT WHERE APPLICABLE MUST REMAIN WITHIN DIMENSIONS	MATERIAL NO. SEE CHART			

PLUG		RECEPTACLE	
PART NO.	ENG. NO.	PART NO.	ENG. NO.
03-06-2011	1625-IP	03-06-1011	1625-IR

**PLUG LEGEND:**



**RECEPTACLE LEGEND:**



**NOTES:**

1. MATERIAL: NYLON, PA66, UL94V-2, COLOR: NATURAL
2. FINISH: NONE
3. PRODUCT SPECIFICATION: PS-02-06
4. PACKAGING SPECIFICATION: PK-1625-003
5. FOR USE WITH .062 SERIES TERMINALS
6. PARTS CONFORM TO CLASS B REQUIREMENTS OF COSMETIC SPECIFICATION PS-45499-002.

SEE SHEET 1 EC NO: UCP2015-4538 DRWN:KIPPER 2015/05/01 CHKD:JBELL 2015/05/04 APPR:FSMITH 2015/06/04	J2 REV	QUALITY SYMBOLS	GENERAL TOLERANCES (UNLESS SPECIFIED)	DIMENSION STYLE	SCALE	DESIGN UNITS	THIRD ANGLE PROJECTION
		▽=0	mm INCH	IN/MM	4:1	INCH	PLUG & RECEPTACLE 1 CIRCUIT
		▽=0	4 PLACES ± --- ± ---	DRAWN BY DATE	JBS 2003/06/10	TITLED	
		▽=0	3 PLACES ± --- ±.010	CHECKED BY DATE			BW 2003/06/16
		2 PLACES ± 0.25 ±.014	APPROVED BY DATE	FSMITH 2014/07/09	<b>molex</b>		
		1 PLACE ± 0.35 ± ---	MATERIAL NO.	DOCUMENT NO.			SD-1625-1*-*
		0 PLACE ± --- ± ---	ANGULAR ± 1°	SEE CHART			2 OF 2
DRAFT WHERE APPLICABLE MUST REMAIN WITHIN DIMENSIONS			THIS DRAWING CONTAINS INFORMATION THAT IS PROPRIETARY TO MOLEX INCORPORATED AND SHOULD NOT BE USED WITHOUT WRITTEN PERMISSION				