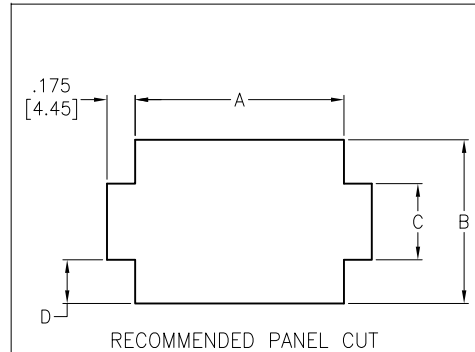
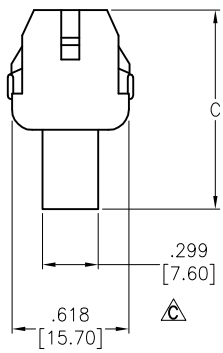
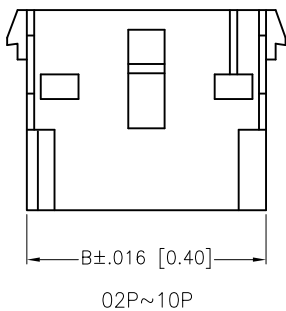
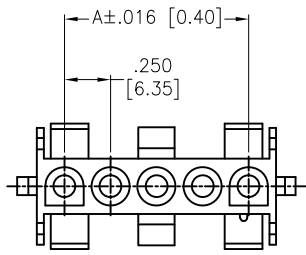
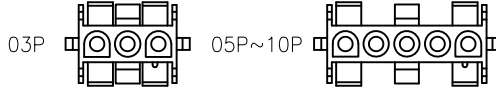
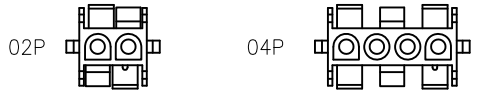


APPROVED: _____

DATE: _____ TITLE: _____

Rev	AWO #	Description	Date	Appr
-		RELEASED	3/2/18	
A		UPDATE DRAWING	2/19/20	AY/AY1
B		UPDATE DRAWING	2/21/20	LH/AY1
C		UPDATE DIM.	11/12/20	LH/JL



Poles	Dimensions			
	A	B	C	D
02	.565 [14.35]	.532 [13.50]	.340 [8.64]	.095 [2.41]
03	.815 [20.70]			
04	1.065 [27.05]			
05	1.315 [33.40]			
06	1.567 [39.80]			
07	1.817 [46.15]			
08	2.067 [52.50]			
09	2.317 [58.85]			
10	2.567 [65.20]			

Poles	Dimensions					
	A		B		C	
02	.250 [6.35]	.550 [13.97]	1.079 [27.40]			
03	.500 [12.70]	.800 [20.32]	1.079 [27.40]			
04	.750 [19.05]	1.050 [26.67]	1.079 [27.40]			
05	1.000 [25.40]	1.307 [33.20]	1.083 [27.50]			
06	1.250 [31.75]	1.550 [39.37]	1.567 [39.80]			
07	1.562 [38.10]	1.800 [45.72]	1.817 [46.15]			
08	1.750 [44.45]	2.050 [52.07]	2.067 [52.50]			
09	2.000 [50.80]	2.300 [58.42]	2.317 [58.85]			
10	2.250 [57.15]	2.550 [64.77]	2.567 [65.20]			

SPECIFICATIONS:

Material:

Insulator: Nylon66, rated UL 94V-2

Insulator color: Natural

Electrical:

Current rating: 02~10P: 12 Amp max (With UL1015, 12AWG)

Contact resistance: 20 mohms max

Insulation resistance: 1,000 Mohms min

Dielectric withstanding voltage: 2,900 VAC for 1 minute

Temperature Rating:

-40°C to +105°C

Environmental:

Lead free, RoHS compliant.



UNLESS OTHERWISE SPECIFIED ALL DIMENSIONS ARE INCHES [MM] TOLERANCES: EXCEPT AS NOTED		
INCHES		HOLES
.X ±.10	∅.X ±.10	
.XX ±.020	∅.XX ±.015	
.XXX ±.015	∅.XXX ±.010	
APPROVALS		DATE
DRAWN	HR	3/2/18
CHECKED	AC	3/2/18
APPROVED		

ADAM TECH INTERCONNECTS
 909 Rahway Avenue,
 Union, NJ 07083
 Phone: 908-687-5000
 Fax: 908-687-5710

TITLE .250 [6.35MM] PITCH CONNECTOR, HOUSINGS, FEMALE, VERTICAL		
SIZE X	PART NO. DME-F2-XX	REV. C
REF: S00124T	SCALE: NTS	SHEET 1 OF 1