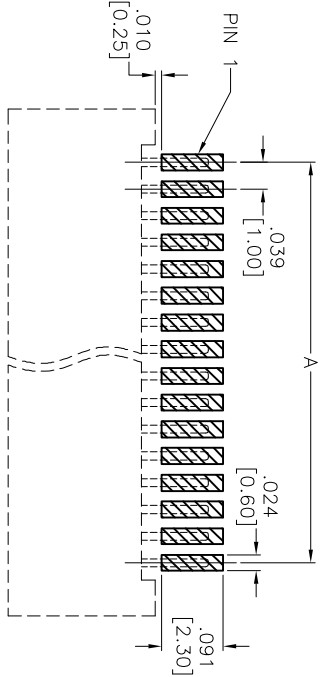
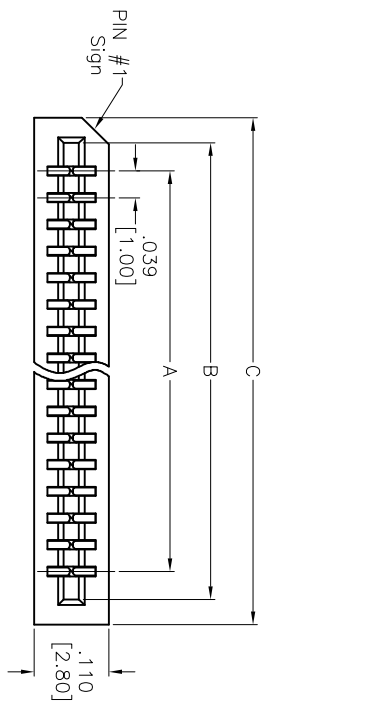
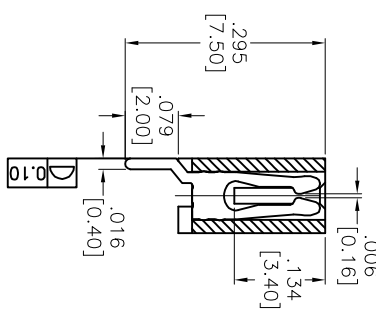
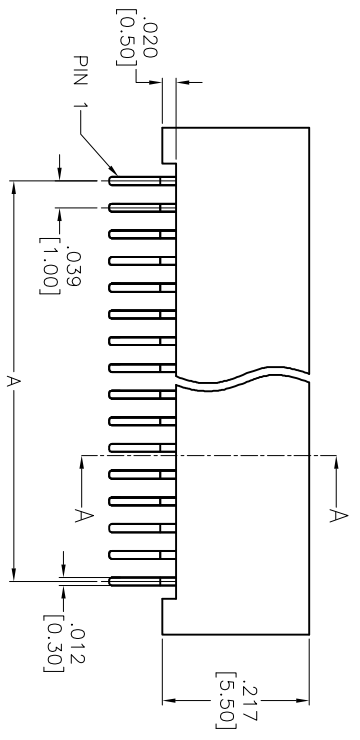
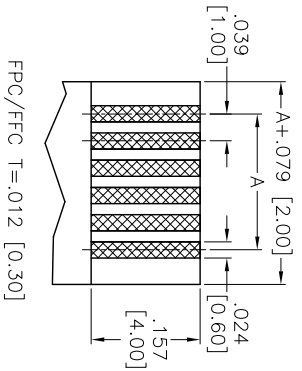


| Rev | AWO # | Description | Date | Appr |
|-----|-------|-------------|---------|------|
| - | | RELEASED | 6/22/15 | |

APPROVED: _____
 DATE: _____ TITLE: _____



RECOMMENDED PCB LAYOUT



Positions: 2 thru 36
 A = .039 [1.00] x No. of Spaces
 B = A + .083 [2.10]
 C = A + .157 [4.00]

ADAM TECH
 909 Railway Avenue, Union, NJ 07083
 Phone: 908-687-5000 Fax: 908-687-5710

LIF FLEX CIRCUIT CONNECTOR
 SIDE ENTRY, SMT

SPECIFICATIONS:

- Material: Insulator: Hi-Temp Thermoplastic, Glass reinforced, rated UL 94V-0
- Insulator color: Black
- Contacts: Copper Alloy
- Plating: Tin over Copper underplate overall
- Electrical: Current rating: 1 Amps max
- Insulation resistance: 30 mohms max initial
- Dielectric withstanding voltage: 500 VAC for 1 minute
- Operating temperature: -25°C to +85°C
- Environmental: Lead free, RoHS compliant



| | |
|-----------------------------------|--------------|
| UNLESS OTHERWISE SPECIFIED | |
| ALL DIMENSIONS ARE IN INCHES [MM] | |
| TOLERANCES EXCEPT AS NOTED | |
| INCHES | HOLDS |
| .X ± .10 | ØXX ± .10 |
| .XX ± .020 | ØXXX ± .015 |
| .XXX ± .015 | ØXXXX ± .010 |
| APPROVALS | DATE |
| DRAWN AY | 6/22/15 |
| CHECKED AY1 | 6/22/15 |
| APPROVED | |

| | | | |
|----------------------------|---------|----------|------------------|
| TITLE | | SIZE | |
| LIF FLEX CIRCUIT CONNECTOR | | X | |
| SIDE ENTRY, SMT | | PART NO. | PCB-C5-XX-SA-SMT |
| REF: | S00769C | SCALE: | NTS |
| SHEET 1 OF 1 | | REV. | - |