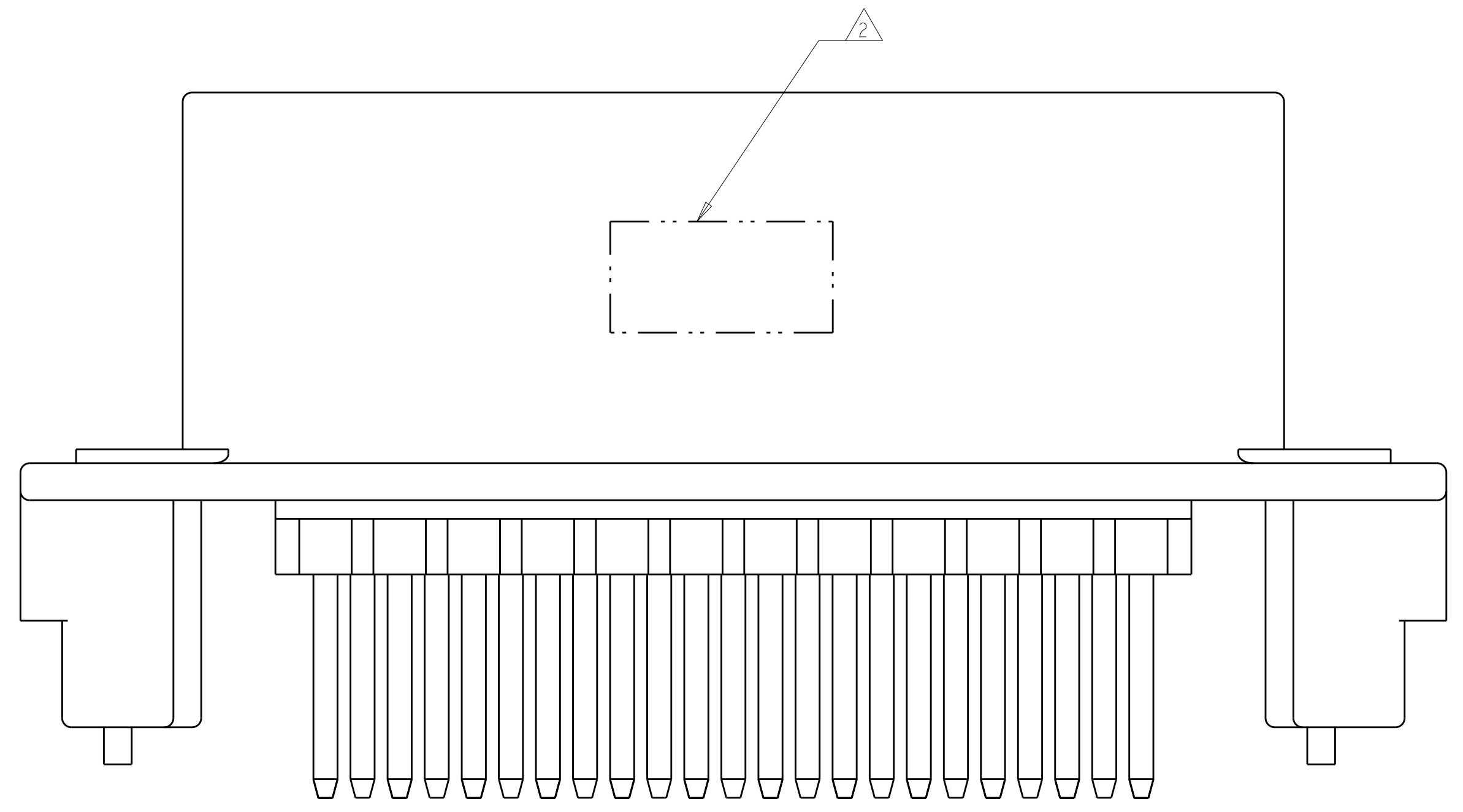
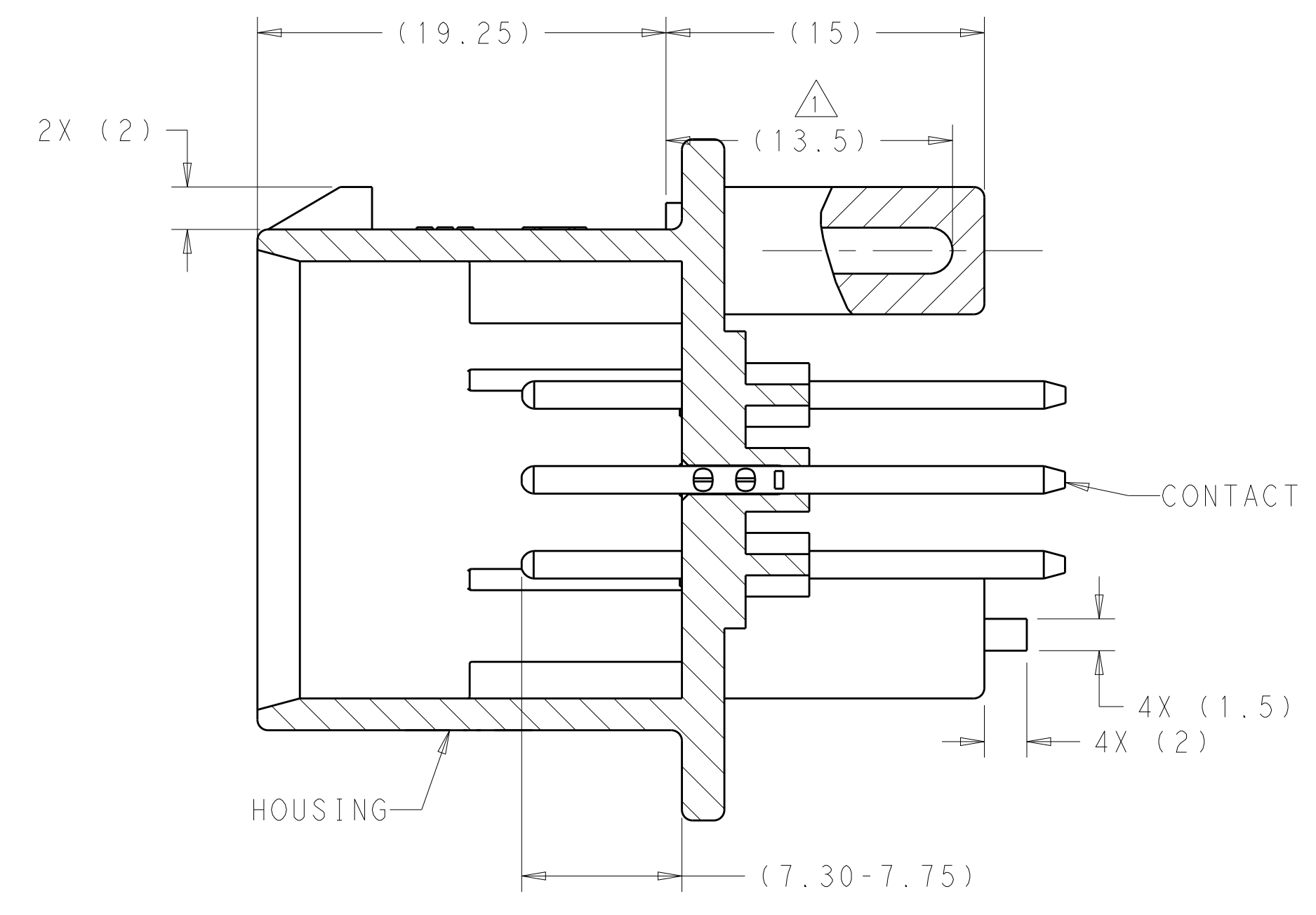
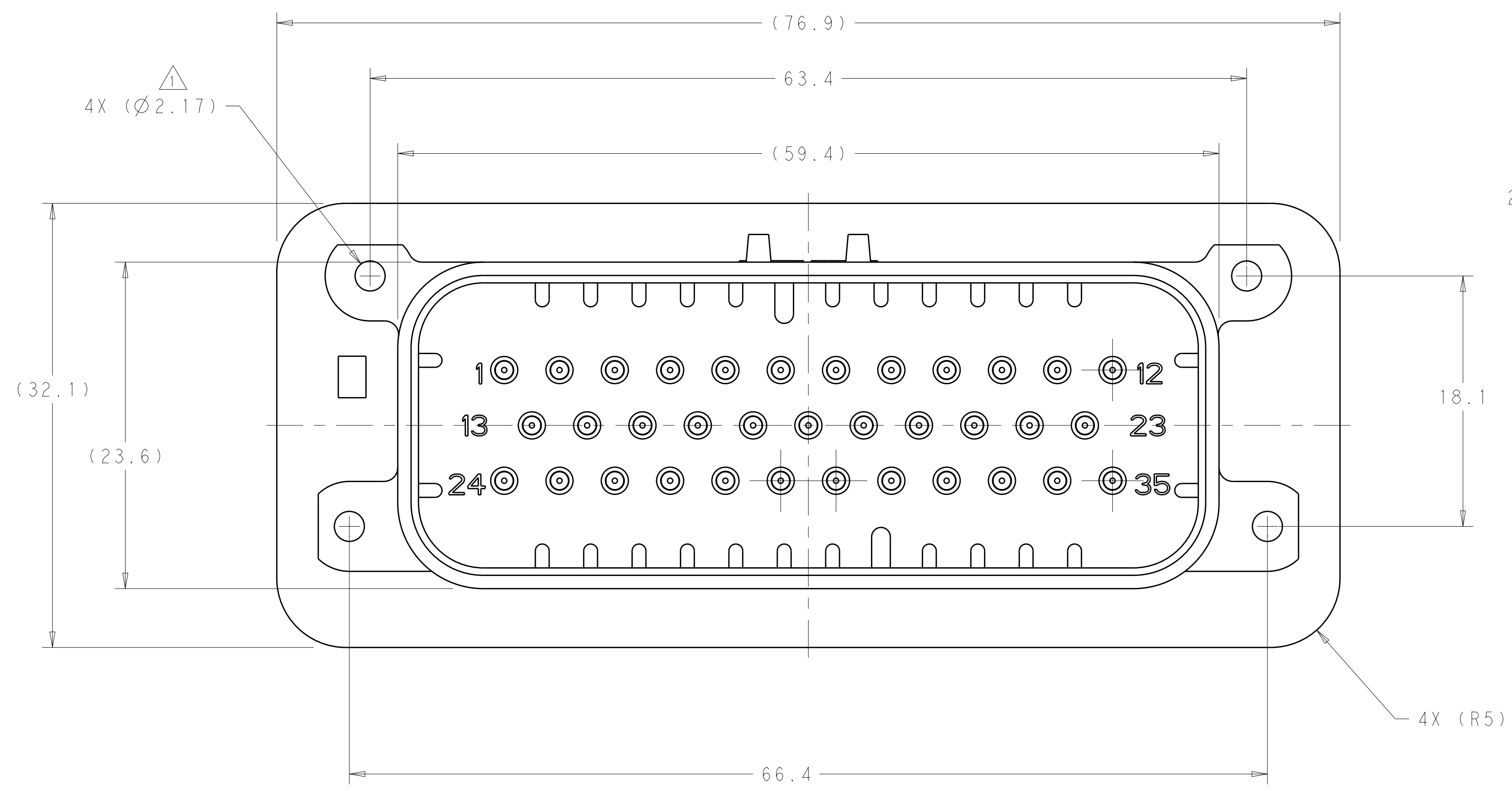


REVISIONS				
P.	LTN	DESCRIPTION	DATE	APVD
A9		REVISED PER ECO-16-003526	09MAR2016	JM DS
A10		REVISED PER ECO-19-009419	20JUNE2019	DS DS
A11		REVISED PER ECO-20-004256	25MAR2020	JM DS
A12		REVISED PER PCN E-20-016603	24NOV2020	PN DS

- 1. SUGGESTED MOUNTING SCREW SIZE IS  $\varnothing 2.50-3.00\text{mm}$  [ $\varnothing 0.099 - 0.118$  INCH] SELF TAPPING THREAD FORMING SCREW, SUCH AS DELTA PT, TO BE DRIVEN AT 0.6-0.8 N-m. THE CUSTOMER SHOULD TEST THE SCREW SIZE AND TYPE IN ORDER TO VERIFY THEIR SELECTION FOR THEIR APPLICATION.
- 2. DATE CODE IN THIS LOCATION USING 5 DIGIT CODE. FIRST 2 DIGITS = YEAR, SECOND 2 DIGITS = WEEK, LAST DIGIT = DAY.
- 3. MATERIALS: HEADER HOUSING - GLASS FILLED PBT, PINS - TIN OR GOLD PLATED BRASS.
- 4. HOUSING COLORS ARE MECHANICALLY KEYPED TO MATE ONLY WITH IDENTICALLY COLORED PLUG ASSEMBLIES.
- 5. HEADER MATES TO PLUG ASSEMBLY 776164 WHICH USES REELED TERMINAL 770520 OR LOOSE PIECE TERMINAL 770854.



776230-1 & 1-776230-1 SHOWN

HEADER COLOR	PLATING	PART NUMBER
ORANGE	GOLD	1-776230-6
BLUE	GOLD	1-776230-5
GRAY	GOLD	1-776230-4
NATURAL	GOLD	1-776230-2
BLACK	GOLD	1-776230-1
BLUE	TIN	776230-5
GRAY	TIN	776230-4
NATURAL	TIN	776230-2
BLACK	TIN	776230-1

THIS DRAWING IS A CONTROLLED DOCUMENT. DIMENSIONING AND TOLERANCING PER ASME Y14.5M-2009.

OWN: D. STRAUSSER 04FEB2010  
 CHK: D. STRAUSSER 22MAR2010  
 APVD: D. STRAUSSER 27APR2010

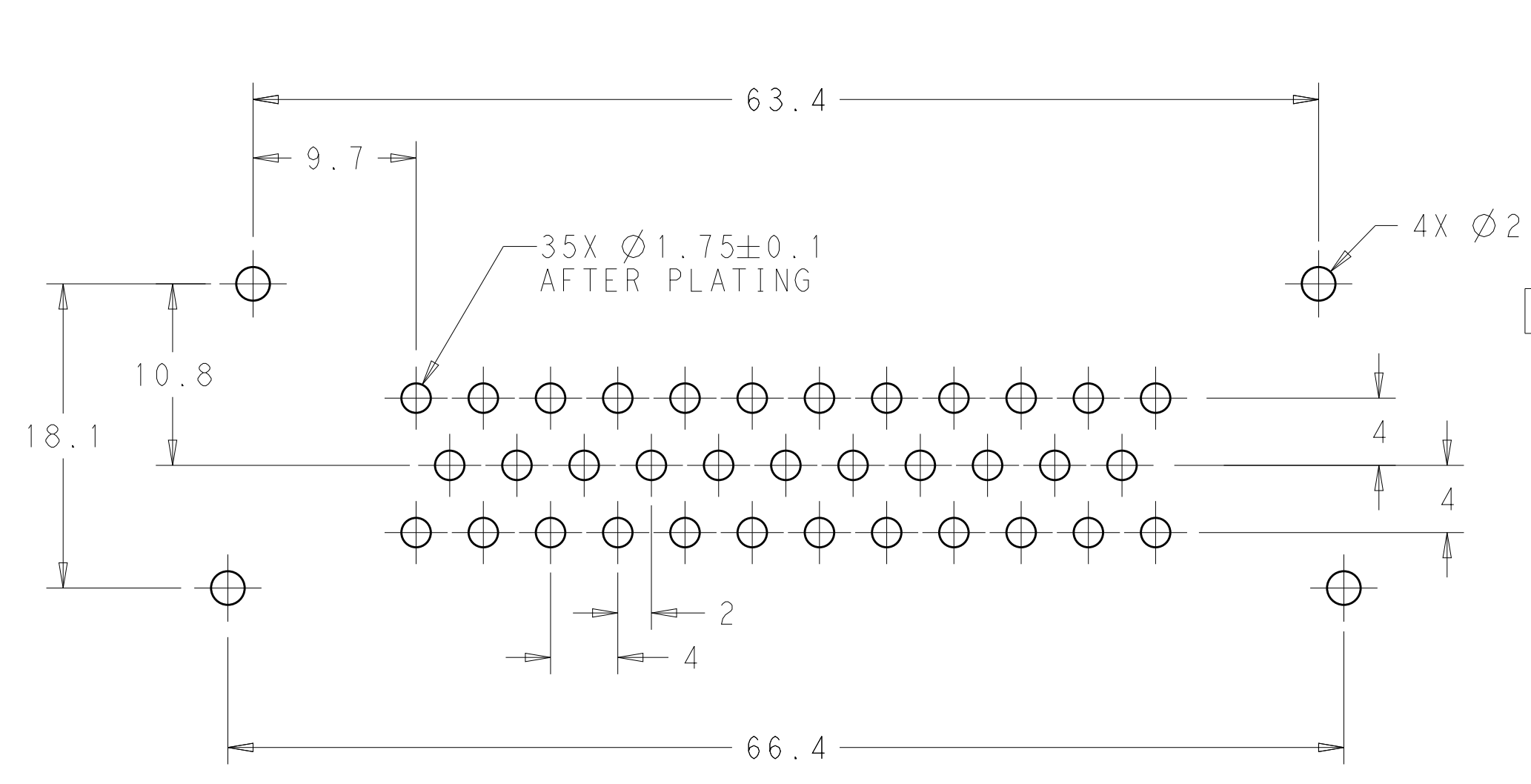
PRODUCT SPEC: 108-1329  
 APPLICATION SPEC: 114-16016  
 WEIGHT: 39.99g

SCALE: 4:1 SHEET 1 OF 2 REV: A12

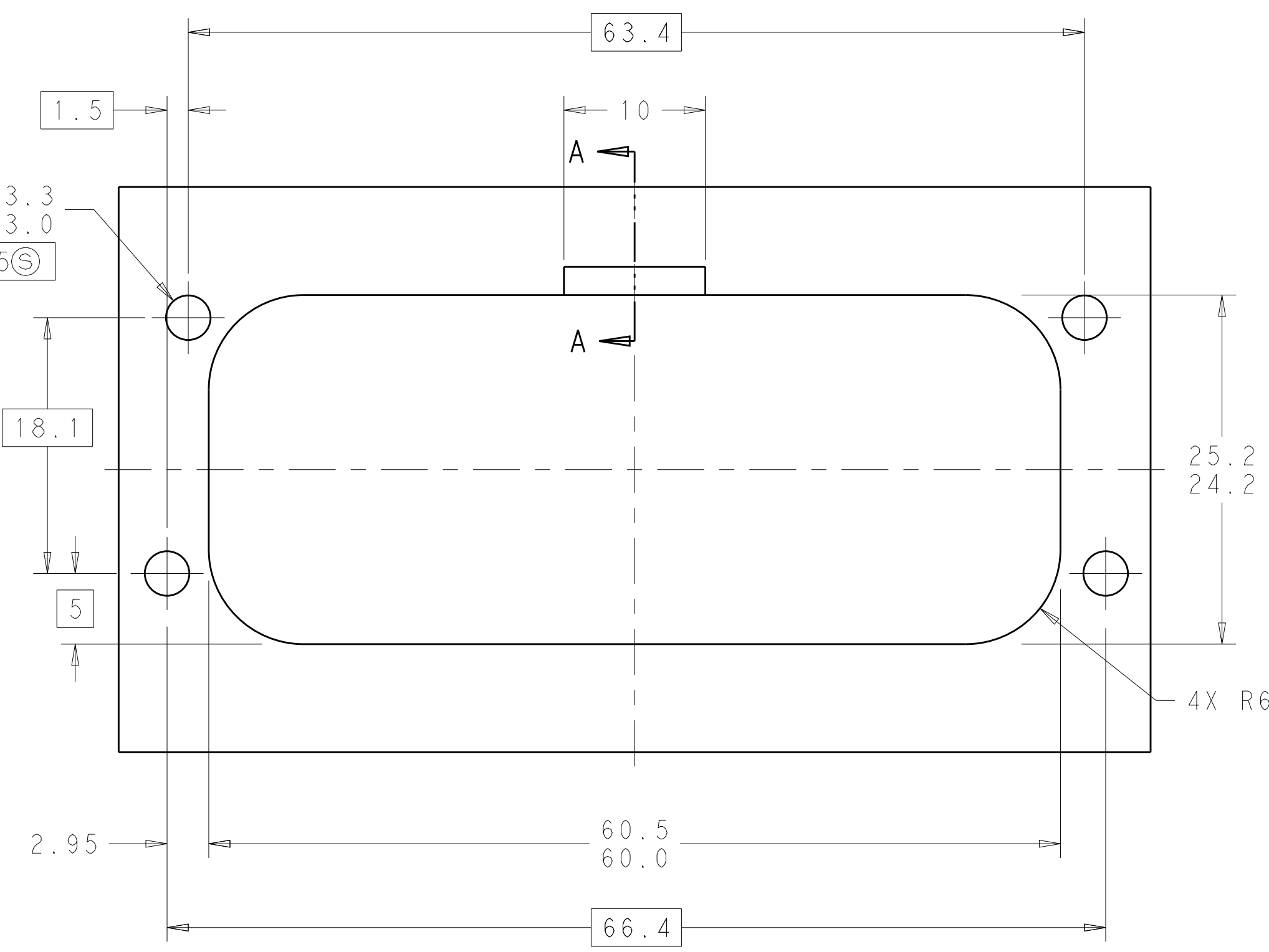
STE TE Connectivity  
 NAME: HEADER ASSEMBLY, 35 POSITION, VERTICAL, AMPSEAL

CUSTOMER DRAWING

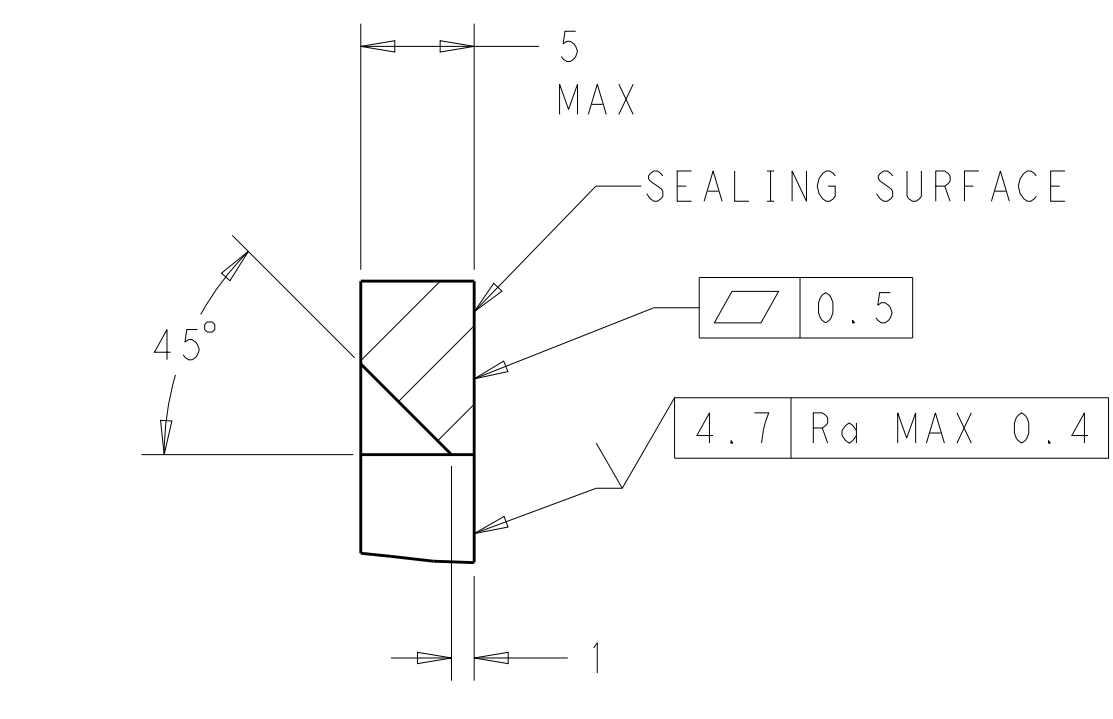
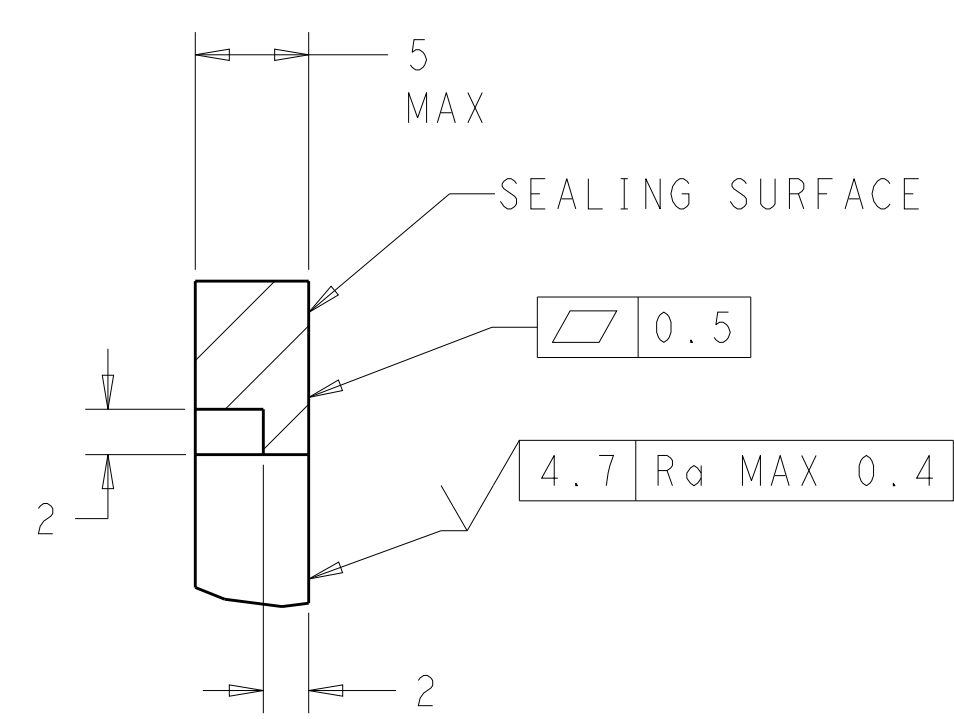
REVISIONS				
P.	LTH	DESCRIPTION	DATE	APVD
-	-	SEE SHEET 1	-	-



RECOMMENDED P.C. BOARD LAYOUT  
 FOR 1.57 THICK P.C. BOARD

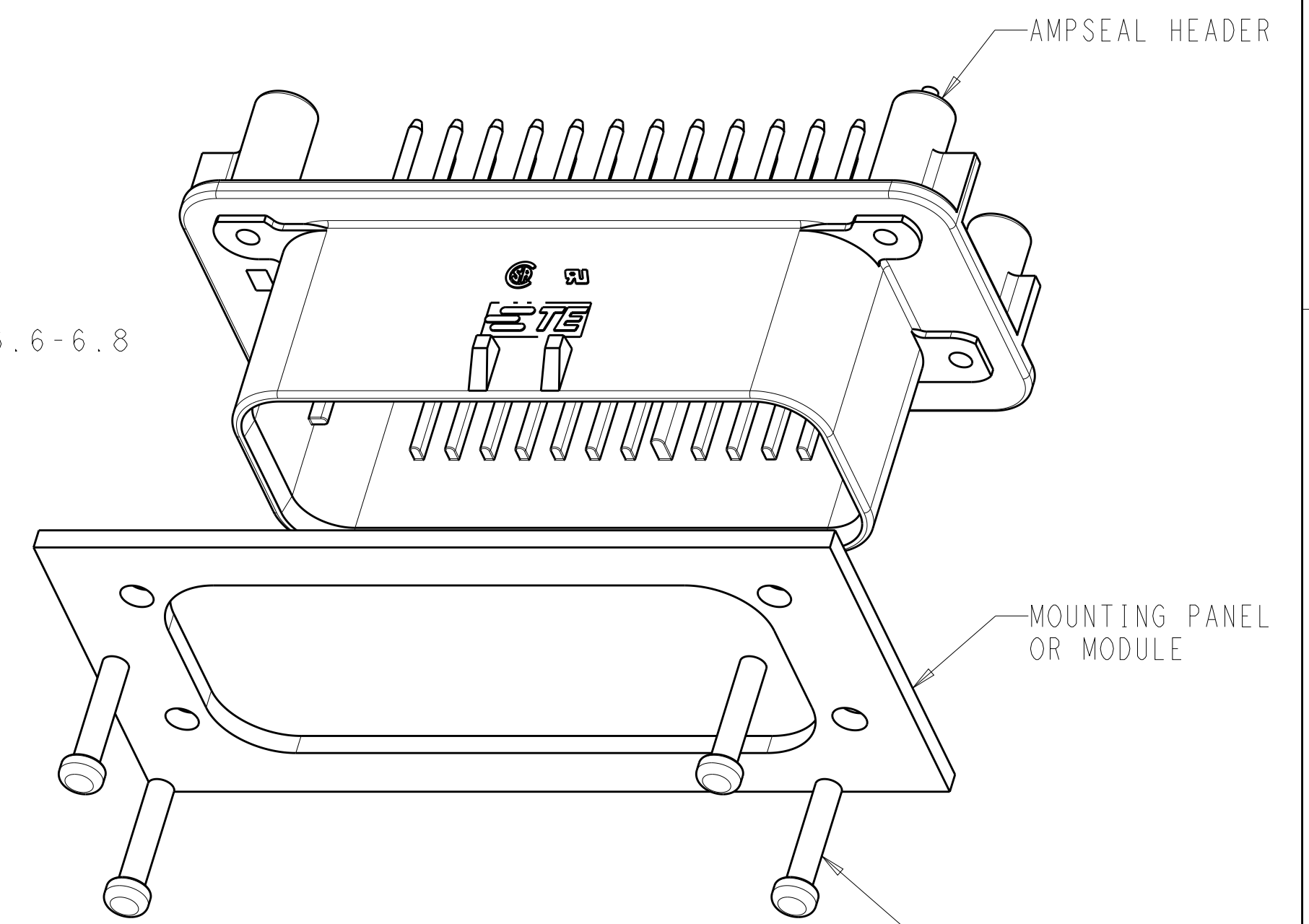


RECOMMENDED MOUNTING HOLE LAYOUT  
 FOR 5.0 MAX THICK PANEL



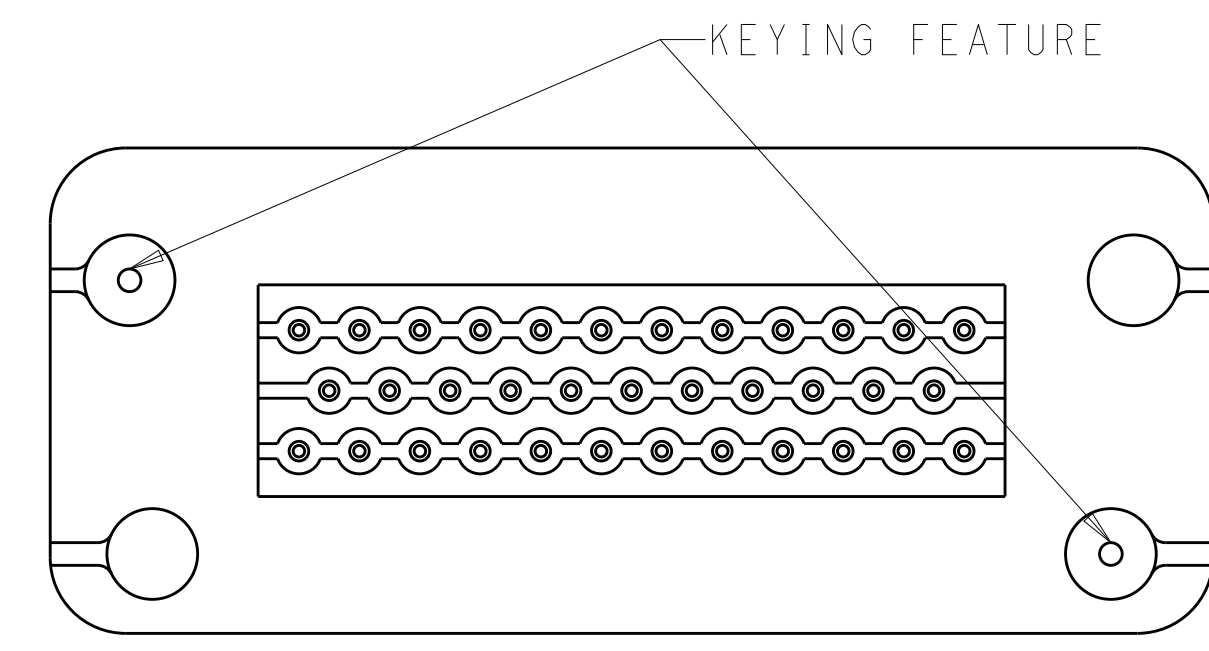
SECTION A-A  
 OPTIONAL CONSTRUCTION IF PANEL  
 THICKNESS IS GREATER THAN 2.0

SECTION A-A  
 OPTIONAL CONSTRUCTION IF PANEL  
 THICKNESS IS GREATER THAN 2.0

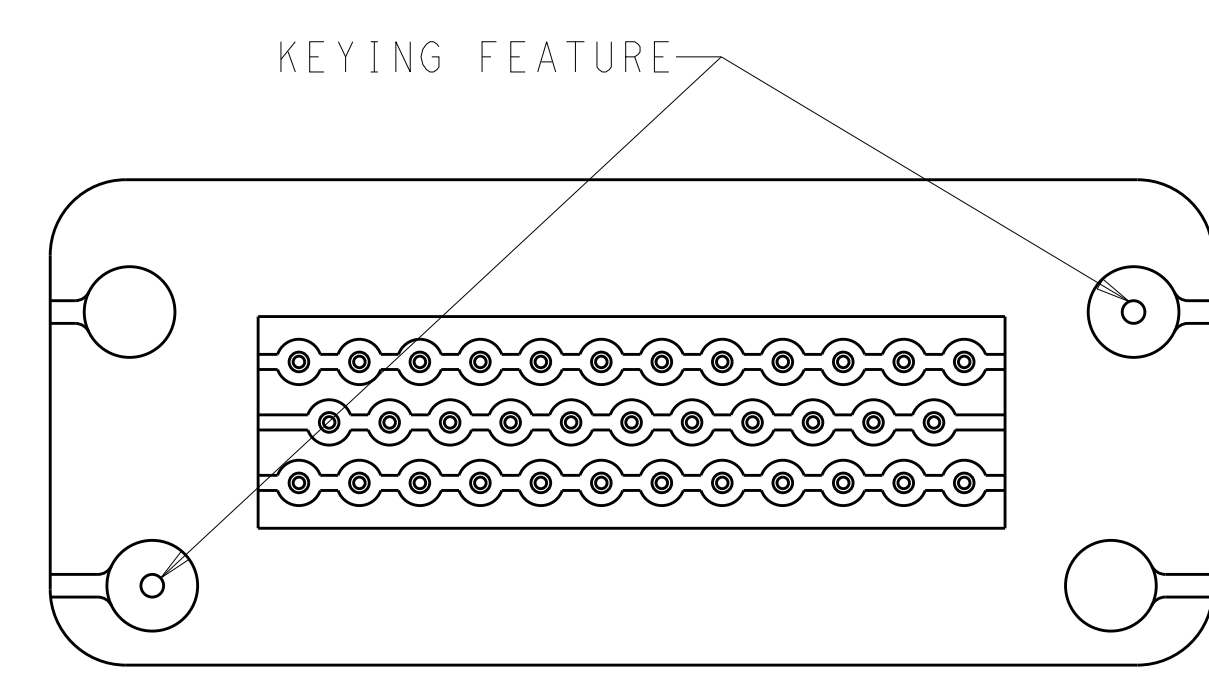


SCALE 2:1

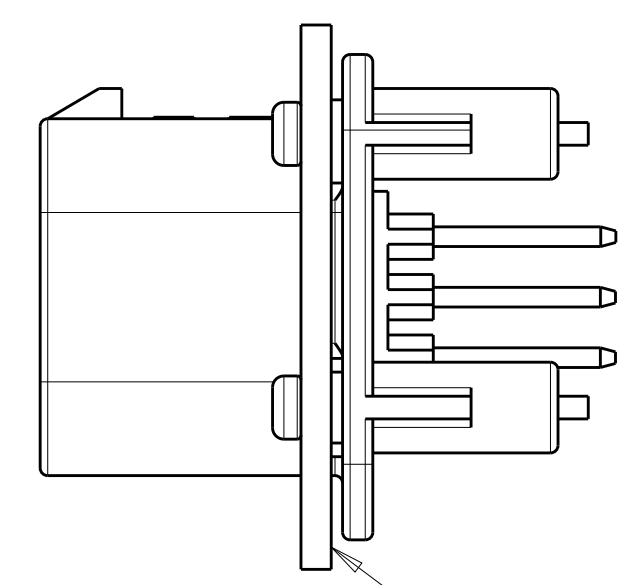
MOUNTING SCREW (4)  
 TORQUE TO 0.6N-m TO 0.8N-m



KEYING FOR 776230-1, 1-776230-1, 776230-4,  
 1-776230-4 AND 1-776230-6  
 SCALE 2:1

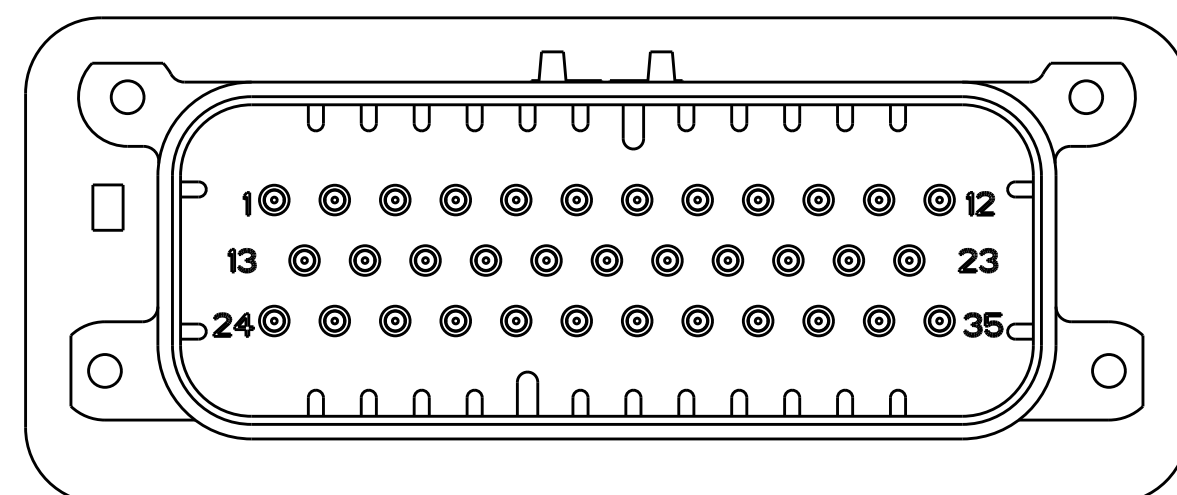


KEYING FOR 776230-2, 1-776230-2, 776230-5  
 AND 1-776230-5  
 SCALE 2:1

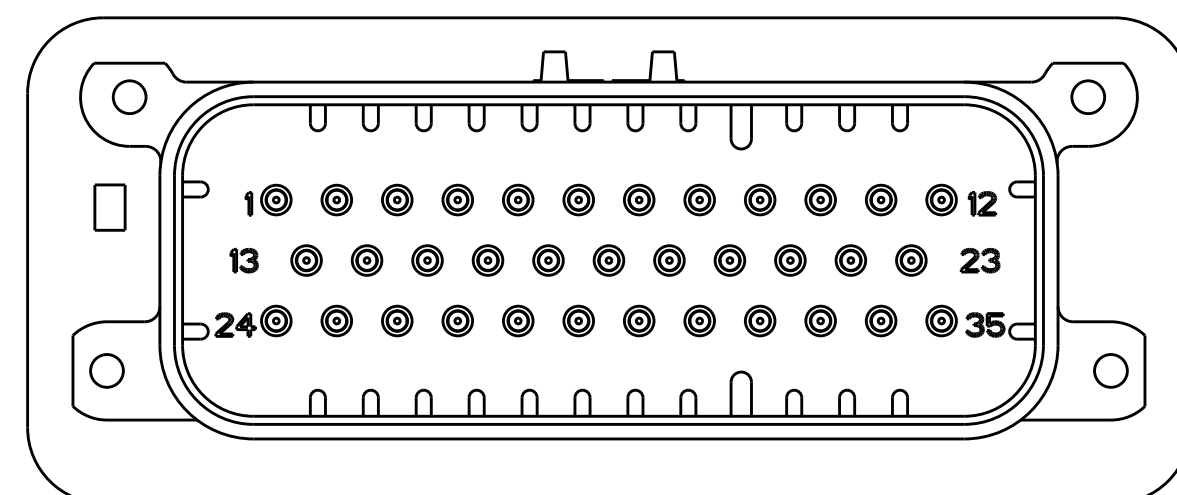


SCALE 2:1

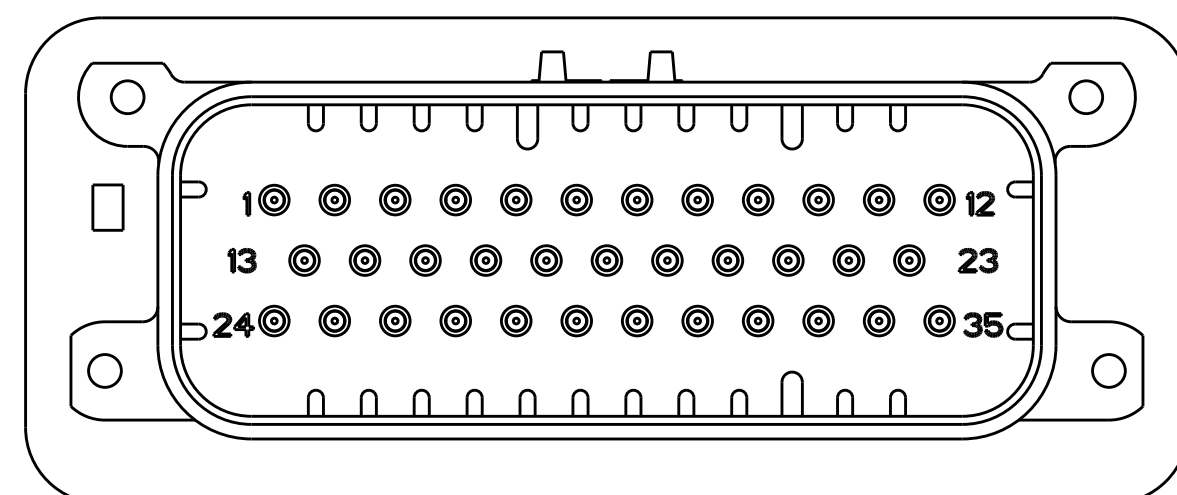
ENSURE THE HEADER IS FLUSH  
 TO THE PANEL FACE ALL AROUND  
 BEFORE TIGHTENING TO FINAL TORQUE



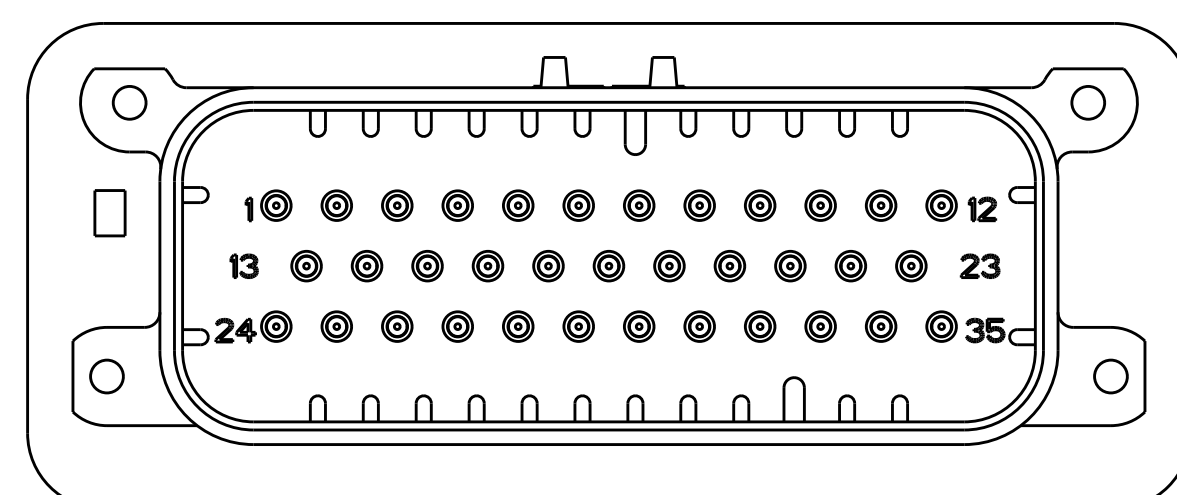
776230-2 & 1-776230-2  
 KEY LOCATION  
 SCALE 2:1



776230-4 & 1-776230-4  
 KEY LOCATION  
 SCALE 2:1



776230-5 & 1-776230-5  
 KEY LOCATION  
 SCALE 2:1



1-776230-6  
 KEY LOCATION  
 SCALE 2:1

THIS DRAWING IS A CONTROLLED DOCUMENT.		OWN: D. STRAUSSER 04FEB2010	TE Connectivity
DIMENSIONS: mm		CHK: D. STRAUSSER 22MAR2010	
TOLERANCES UNLESS OTHERWISE SPECIFIED:		APVD: D. STRAUSSER 27APR2010	NAME: HEADER ASSEMBLY, 35 POSITION, VERTICAL, AMPSEAL
0 PLC	±	PRODUCT SPEC	SIZE: CAGE CODE DRAWING NO
1 PLC	±0.2	108-1329	RESTRICTED TO
2 PLC	±	APPLICATION SPEC	A100779C=776230
3 PLC	±	114-16016	SCALE 4:1 SHEET 2 OF 2 REV A12
4 PLC	±	WEIGHT 39.99g	
ANGLES	±	CUSTOMER DRAWING	