

Customer Information Sheet

DRAWING No.: M225-2830046 & M225-2840046

IF IN DOUBT - ASK

©

NOT TO SCALE

THIRD ANGLE PROJECTION

ALL DIMENSIONS IN mm

SPECIFICATION:

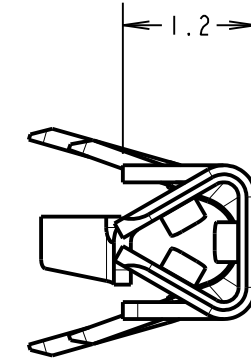
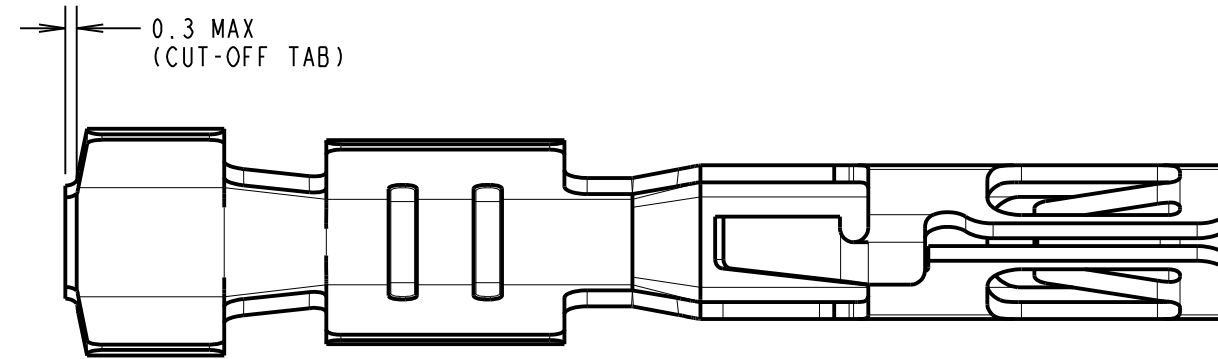
MATERIAL:
BERYLLIUM COPPER

FINISH:
46 = 3.0µm 100% OVER 2.4µm NICKEL

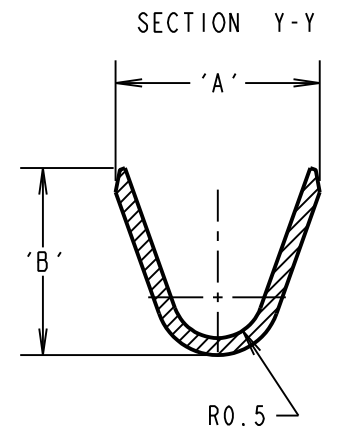
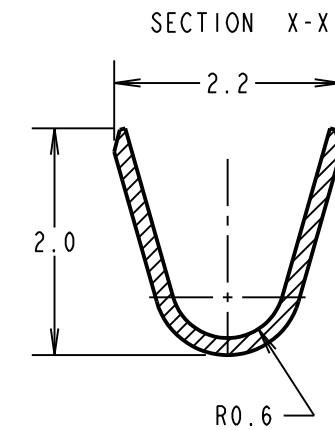
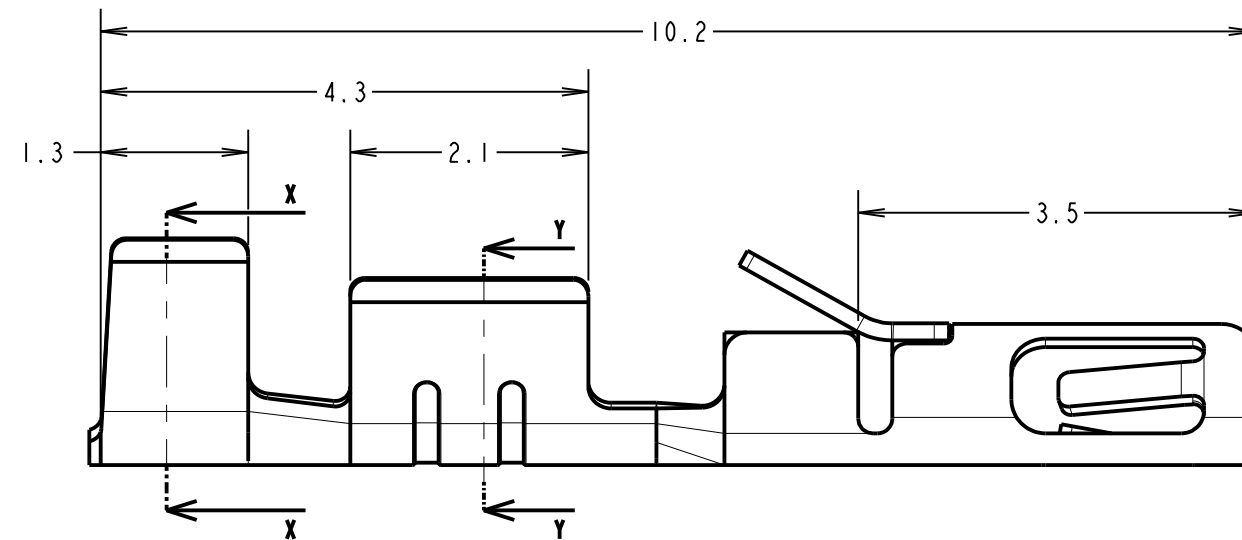
MECHANICAL:
INSERTION FORCE = 5.0N MAX, 0.5N MIN
WITHDRAWAL FORCE = 4.0N MAX, 0.2N MIN
DURABILITY = 50 OPERATIONS

ENVIRONMENTAL:
OPERATING TEMPERATURE = -55°C TO +125°C

PACKING:
LOOSE, 100 PER BAG, ONE OR MORE BAGS PER BOX
FOR COMPLETE CONNECTOR SPECIFICATION, SEE
COMPONENT SPECIFICATION C050XX (LATEST ISSUE)

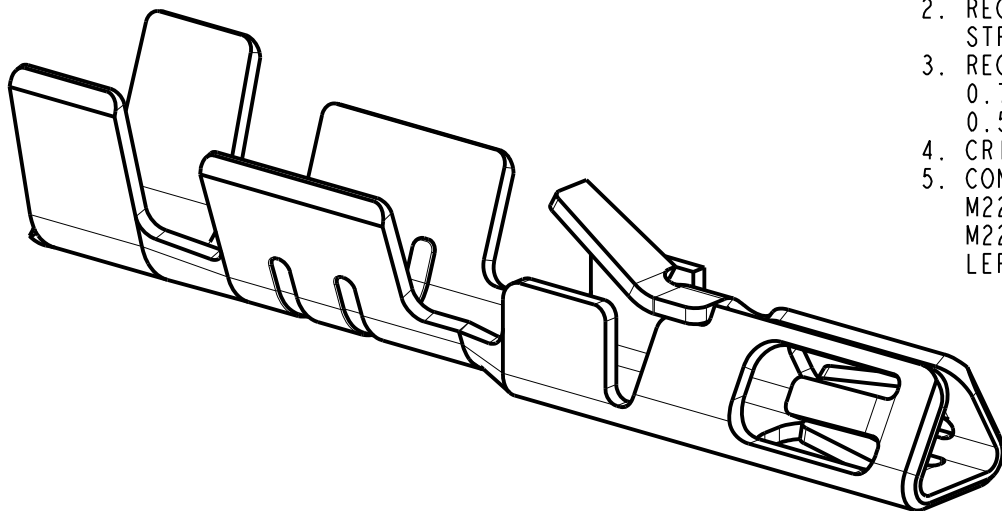


PART No.	DIMENSION	
	'A'	'B'
M80-2830046	1.8 ±0.2	1.7 ±0.2
M80-2840046	1.3 ±0.2	1.0 ±0.2



NOTES:

- TO BE USED WITH THE FOLLOWING FEMALE HOUSING:
M225-455XX98 = HOUSING WITH RETAINER & PIN.
- RECOMMENDED WIRE TYPE = 22-28 AWG, WIRE INSULATION Ø0.6mm-Ø1.1mm.
STRIP WIRE BY 2.7-3.0mm FOR CRIMPING.
- RECOMMENDED CRIMP HEIGHTS:
0.76-0.82mm FOR 22-24 AWG CONTACTS
0.50-0.56mm FOR 26-28 AWG CONTACTS.
- CRIMP SUITABLE FOR PROCESSING WITH HANDCRIMP TOOL Z80-255.
- CONTACTS ARE AVAILABLE ON REELS, PART NUMBER:
M225-2530046 FOR 22-24 AWG WIRE AND
M225-2540046 FOR 26-28 AWG WIRE, SUITABLE FOR PROCESSING WITH
LEFT SIDE FEED CRIMPING PRESS. CONTACT technical@harwin.co.uk FOR DETAILS.



ORDER CODE: **M225-XXX0046**

WIRE SIZE: _____
283 = 22-24 AWG
284 = 26-28 AWG

FINISH: _____
46 = 100% TIN ALL OVER

MGP	4	01.03.21	21843
NAME	ISS.	DATE	CN/CO
APPROVED: MGP			
CHECKED: RTP			
DRAWN: S.BENNETT			
CUSTOMER REF.:			
ASSEMBLY DRG:			

HARWIN

www.harwin.com
technical@harwin.com

THIS DRAWING AND ANY INFORMATION OR DESCRIPTIVE MATTER SET OUT HEREON ARE CONFIDENTIAL AND COPYRIGHT PROPERTY OF THE HARWIN GROUP AND MUST NOT BE DISCLOSED, LOANED, COPIED OR USED FOR MANUFACTURING, TENDERING OR FOR ANY OTHER PURPOSE WITHOUT THEIR WRITTEN PERMISSION.

TOLERANCES
X. = ±1mm
X.X = ±0.50mm
X.XX = ±0.20mm
X.XXX = ±0.01mm
ANGLES = ±5°
UNLESS STATED

MATERIAL:
SEE ABOVE

FINISH: SEE ABOVE

S/AREA: mm²

TITLE: DATAMATE TRIO-TEK FEMALE CRIMP CONTACT LOOSE 22-24 AWG & 26-28 AWG

DRAWING NUMBER: **M225-2830046 & M225-2840046**

SHT 2 OF 2