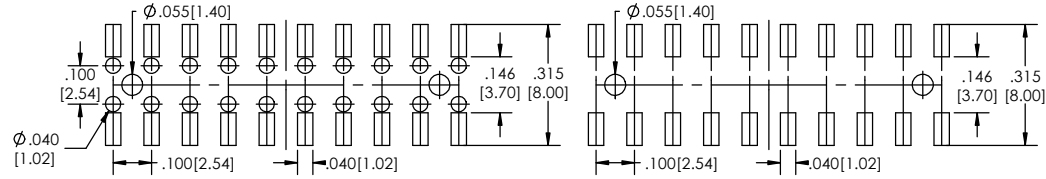
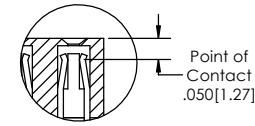


**Recommended P.C. Board Layout**  
SCALE 4:1

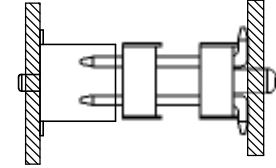


**SURFACE MOUNT PASS THRU ENTRY**

**SURFACE MOUNT TOP ENTRY**



**Application**



BCSSM-1 **XX** - **D** - **02** - **XX** - **V** - **XX** - **XX** - **X** - **LF**  
(A) (B) (C) (D) (E) (F) (G) (H) (I)

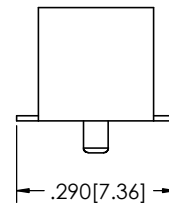
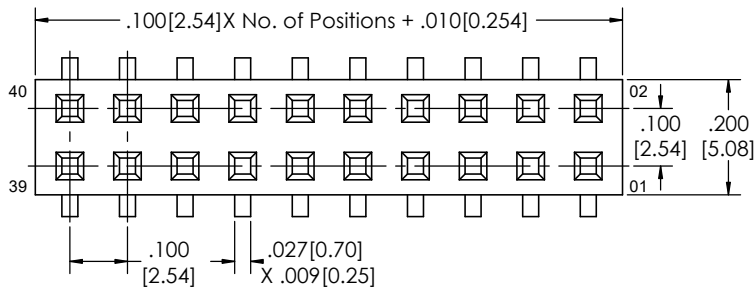
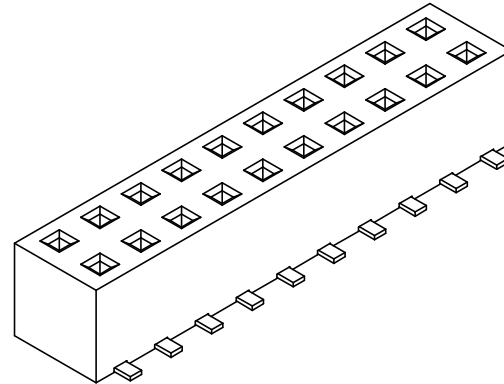
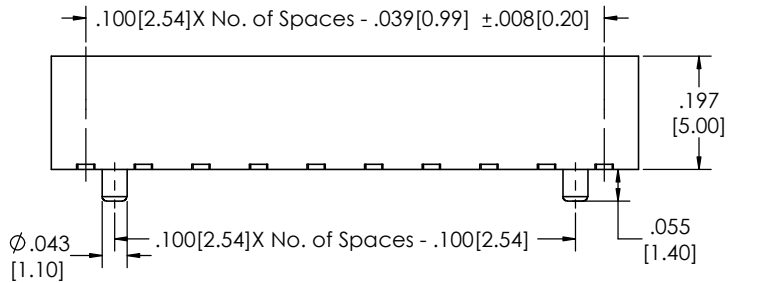
- A. Pins Per Row
  - 1 through 40
- B. Row Specification
  - D= Double Row
- C. Style
  - 02= Surface mount option
- D. Plating Options
  - See Plating Options below
- E. V= Vertical
- F. Packing Information
  - TR= Tape and Reel
  - TB= Tube
  - If left blank packaging at MLE's discretion  
Pad may be metal, mylar or plastic
- G. Pad
  - P= Plastic
  - K= Kapton
  - O= No Pad
  - If left blank, packaging at MLE's discretion  
Pad may be metal, mylar or plastic
- H. Alignment Pin
  - Leave blank if not needed
  - AP= With
- I. Lead Free

Plating Options		Mate With:
G	10µ Gold on Contact Area/ Flash on Tail	BSTC TSHCR
T	Matte Tin all Over	BSTCM TSHCRE
GT	10µ Gold on Contact Area/ Matte Tin on Tail	BSTCR TSHCRSM
H	30µ Gold on Contact Area/ Matte Tin on Tail	BSTCRSM TSHR
F	Gold Flash over Entire Pin	BSTS TSHRE
FT	Gold Flash on Contact Area/ Matte Tin on Tail	LBSTCM TSHS

- Specifications:
- Current Rating: 3.0 Ampere
- Insulation Resistance: 1000M Ohms Min.
- Dielectric Withstanding: 600V AC
- Contact Resistance: 20M Ohms Max.
- Operation Temperature: -40°C to +105°C
- Soldering Process:
  - IR Reflow: 260°C for 10 sec.
  - Wave: 230°C for 5-10 sec.
  - Manual Solder: 350°C for 3-5 sec.

**Materials:**  
Contact Material: Phosphor Bronze  
Insulator Material: Polyamide, Nylon 6T, UL94-V0  
Plating: Au or Sn over 50µ" (1.27) Ni

Tails may be clipped to achieve specific dimensions.  
Products cut to specific sizes are uncancelable/ nonreturnable.  
Parts are subject to change without notice.



**PROPRIETARY AND CONFIDENTIAL**  
THE INFORMATION CONTAINED IN THIS DRAWING IS THE SOLE PROPERTY OF Major League Electronics. ANY REPRODUCTION IN PART OR AS A WHOLE WITHOUT THE WRITTEN PERMISSION OF Major League Electronics IS PROHIBITED.

UNLESS OTHERWISE SPECIFIED:		NAME		DATE			TITLE: BCSSM-1-V SERIES		
DIMENSIONS ARE IN INCHES		DRAWN	EOW	02/24/16			SIZE	DWG. NO.	REV
TOLERANCES:		CHECKED	GWE	02/24/16			C		D
ONE DECIMALS ±.100		ENG APPR.							
TWO DECIMAL ±.010		MFG APPR.							
THREE DECIMAL ±.005		INTERPRET GEOMETRIC TOLERANCING PER:		ADDRESS:		2533 Centennial Blvd. Jeffersonville, IN 47130			
FOUR DECIMAL ±.002		MATERIAL		FINISH		Phone: 812-670-4174 Fax: 812-670-4175 E-Mail: mle@mlelectronics.com			
NEXT ASSY USED ON		APPLICATION		DO NOT SCALE DRAWING					