



# SAW Components

Data Sheet N 9260 M





**SAW Components**

**N 9260 M**

**IF Filter for Audio Applications**

**58,75 MHz**

**Data Sheet**

**Standard**

Plastic package **SIP5K**

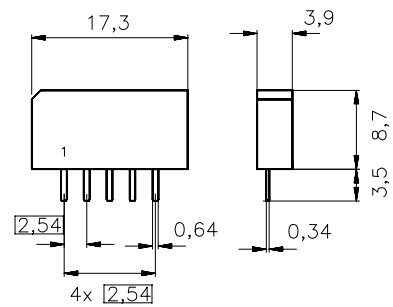
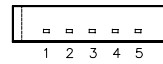
- M

**Features**

- TV IF audio filter with pass bands for picture carrier and sound carrier at 54,25 MHz

**Terminals**

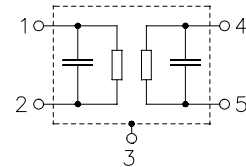
- Tinned CuFe alloy



Dimensions in mm, approx. weight 1,0 g

**Pin configuration**

- 1 Input
- 2 Input - ground
- 3 Chip carrier - ground
- 4 Output
- 5 Output



Type	Ordering code	Marking and package according to	Packing according to
N 9260 M	B39588-N9260-M100	C61157-A1-A15	F61074-V8067-Z000

**Maximum ratings**

Operable temperature range	$T_A$	-25/+65	°C	
Storage temperature range	$T_{stg}$	-40/+85	°C	
DC voltage	$V_{DC}$	5	V	between any terminals
AC voltage	$V_{pp}$	10	V	between any terminals



**SAW Components**

**N 9260 M**

**IF Filter for Audio Applications**

**58,75 MHz**

**Data Sheet**

**Characteristics**

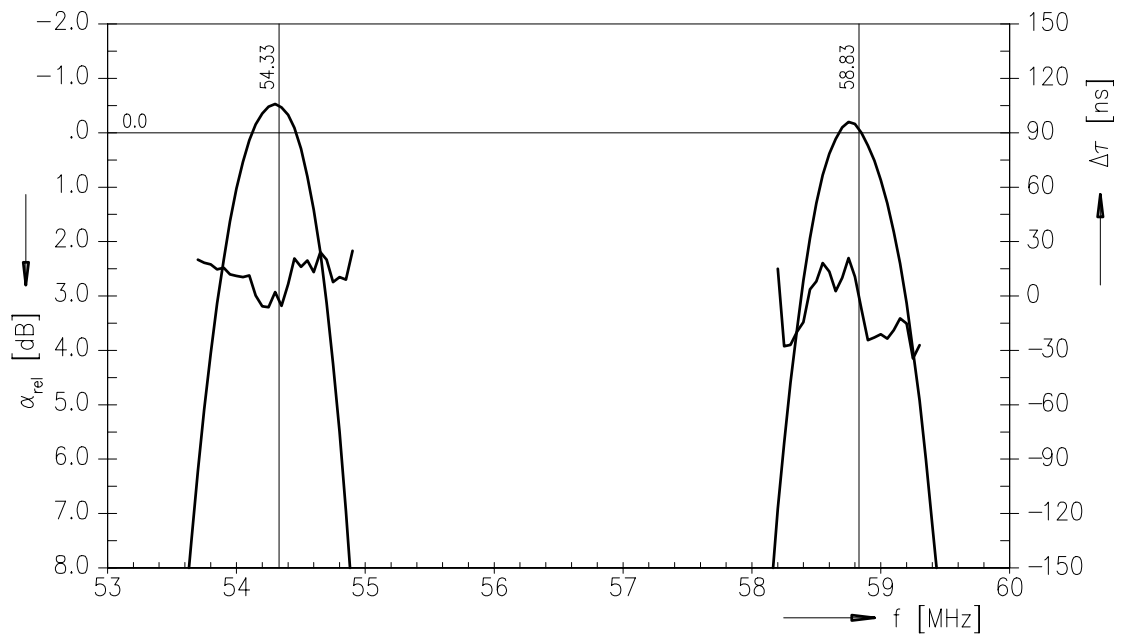
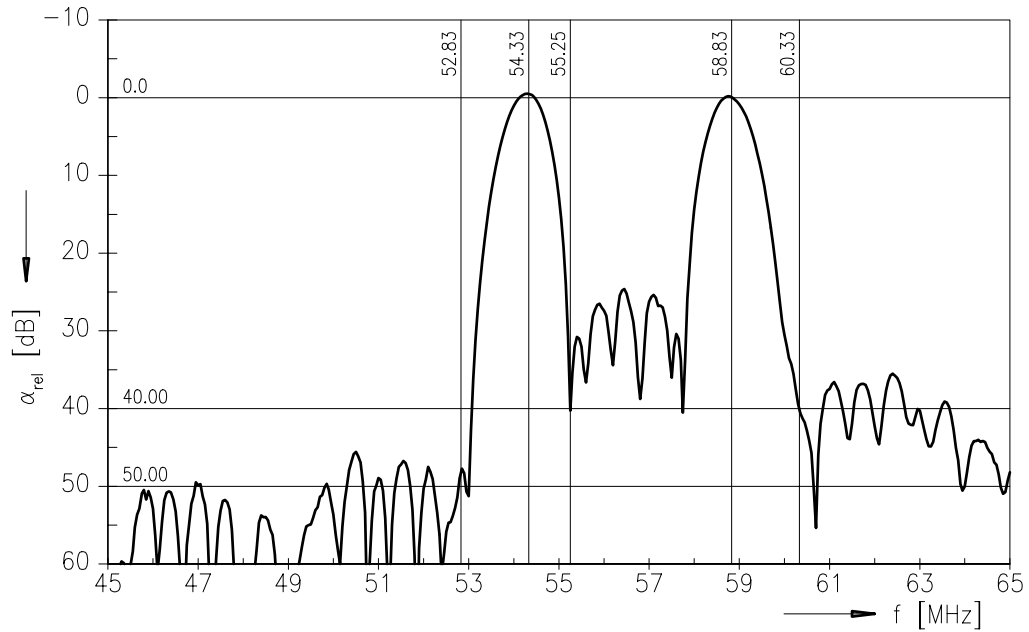
Reference temperature:  $T_A = 25 (45) \text{ }^\circ\text{C}$   
 Terminating source impedance:  $Z_S = 50 \text{ } \Omega$   
 Terminating load impedance:  $Z_L = 2 \text{ k}\Omega \parallel 3 \text{ pF}$

		<b>min.</b>	<b>typ.</b>	<b>max.</b>	
<b>Insertion attenuation</b>					
	$\alpha$				
Reference level for the following data	58,83 (58,75) MHz	18,6	20,1	21,6	dB
<b>Relative attenuation</b>					
	$\alpha_{rel}$				
Sound carrier	54,33 (54,25) MHz	-1,5	-0,5	0,5	dB
Color carrier	55,25 (55,17) MHz	20,0	30,0	—	dB
Adjacent picture carrier	52,83 (52,75) MHz	40,0	50,0	—	dB
Adjacent sound carrier	60,33 (60,25) MHz	29,0	37,0	—	dB
Lower sidelobe					
	45,08 ... 52,83 (45,00 ... 52,75) MHz	36,0	44,0	—	dB
Upper sidelobe					
	60,33 ... 65,08 (60,25 ... 65,00) MHz	28,0	34,0	—	dB
<b>Impedance at 58,83 MHz</b>					
Input:	$Z_{IN} = R_{IN} \parallel C_{IN}$	—	1,3 $\parallel$ 10,2	—	k $\Omega$ $\parallel$ pF
Output:	$Z_{OUT} = R_{OUT} \parallel C_{OUT}$	—	3,3 $\parallel$ 1,5	—	k $\Omega$ $\parallel$ pF
<b>Temperature coefficient of frequency</b>	$TC_f$	—	-72	—	ppm/K



Data Sheet

Frequency response





**SAW Components**

**N 9260 M**

**IF Filter for Audio Applications**

**58,75 MHz**

Data Sheet

**Published by EPCOS AG**

**Surface Acoustic Wave Components Division, SAW CE MM PD**

**P.O. Box 80 17 09, D-81617 München**

© EPCOS AG 2001. All Rights Reserved.

As far as patents or other rights of third parties are concerned, liability is only assumed for components per se, not for applications, processes and circuits implemented within components or assemblies.

The information describes the type of component and shall not be considered as assured characteristics.

Terms of delivery and rights to change design reserved.

For questions on technology, prices and delivery please contact the sales offices of EPCOS AG or the international representatives.

Due to technical requirements components may contain dangerous substances. For information on the type in question please also contact one of our sales offices.