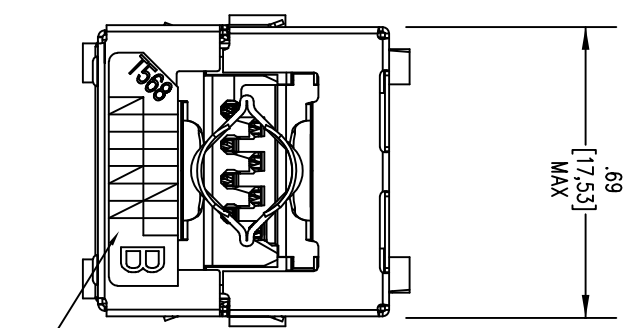


B  
 .69  
 [17.53]  
 MAX



WIRING  
 IDENTIFICATION  
 LABEL

1.51 [38.35]  
 MAX

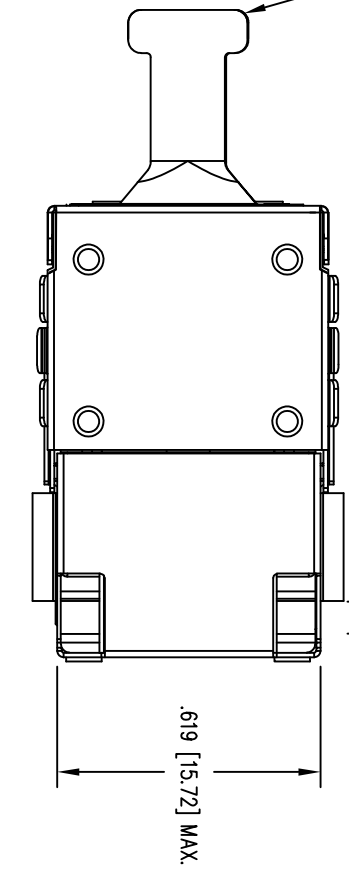
1.06 [26.93]  
 MAX

.680 [17.27]  
 MIN

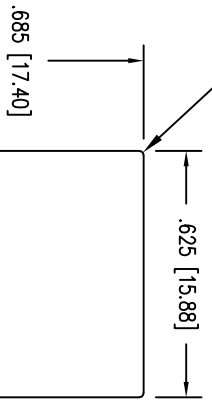
LOAD BAR  
 INSERTION DIRECTION  
 PANEL

WIRE  
 STRAIN RELIEF

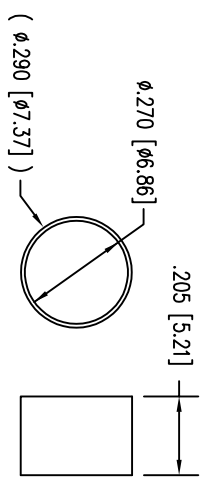
(4) R.010 [0.25]  
 MAX.



.619 [15.72] MAX.



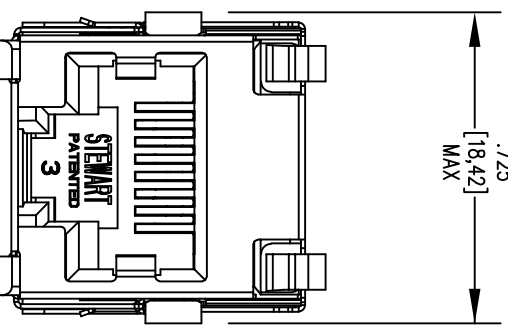
RECOMMENDED PANEL OPENING  
 .074 [1.88] MAXIMUM PANEL THICKNESS



FERRULE  
 P/N F-270-205

DATE	REV	EON	APP'D. BY
3-29-16	A8	10646	TRM
11-14-17	A9	11149	TRM

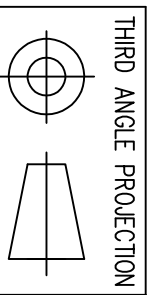
.725  
 [18.42]  
 MAX



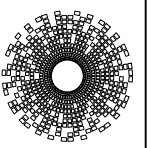
NOTES:

- CONNECTOR MATERIALS:  
 HOUSING: THERMOPLASTIC U194 V-0  
 CONTACTS/SHIELD: COPPER ALLOY  
 SHIELD PLATING: NICKEL  
 FERRULE PLATING: NICKEL OR TIN  
 CONTACT PLATING: SELECTIVE GOLD IN CONTACT AREA  
 SEE CHART FOR PART NUMBER
- FOR PRODUCT SPECIFICATIONS SEE PRO26-01.
- DIMENSIONS AND TOLERANCES COMPLY WITH TIA-1096 STANDARD.

50 MICRO-INCHES [1.27um]	SS-82100-001
CONTACT PLATING IN MATING AREA	PART NUMBER



THIRD ANGLE PROJECTION  
 DO NOT SCALE DRAWING  
 DRAWING IS SUBJECT TO  
 CHANGE WITHOUT NOTICE  
 DIMENSIONS: INCHES [METRIC]  
 UNLESS OTHERWISE SPECIFIED  
 TOLERANCES ARE ±.005 [0.13]  
 ANGLES ARE ± 1°



**Stewart**  
 Connector  
 a bel group  
 11118 Susquehanna Trail South  
 Glen Rock, PA 17327-9199  
 (717) 235-7512  
<http://www.stewartconnector.com>

TITLE:  
 SHIELDED CABLE READY CAT5e JACK  
 (SHOWN IN TERMINATED CONDITION)

THIS DRAWING AND THE SUBJECT MATTER SHOWN THEREON ARE CONFIDENTIAL AND THE PROPRIETARY PROPERTY OF STEWART CONNECTOR AND SHALL NOT BE REPRODUCED, COPIED, OR USED IN ANY MANNER WITHOUT PRIOR WRITTEN CONSENT OF STEWART CONNECTOR. ONE OR MORE U.S. PATENTS MAY APPLY TO THIS PRODUCT. FOR DETAILS, PLEASE VISIT: [HTTP://BELFUSE.COM/STEWART/PATENTS/](http://BELFUSE.COM/STEWART/PATENTS/)

DRN BY:	TRM	DATE:	7-18-05
APP'D BY:	DHG	DATE:	7-18-05
DWG NO.:	CT820006	REV.:	A9

