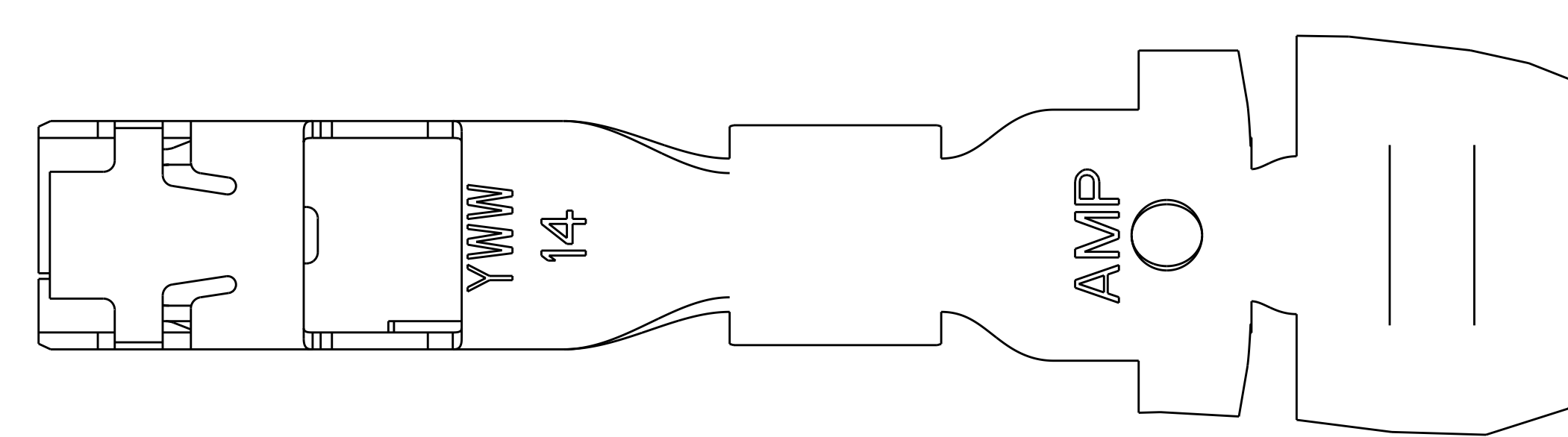
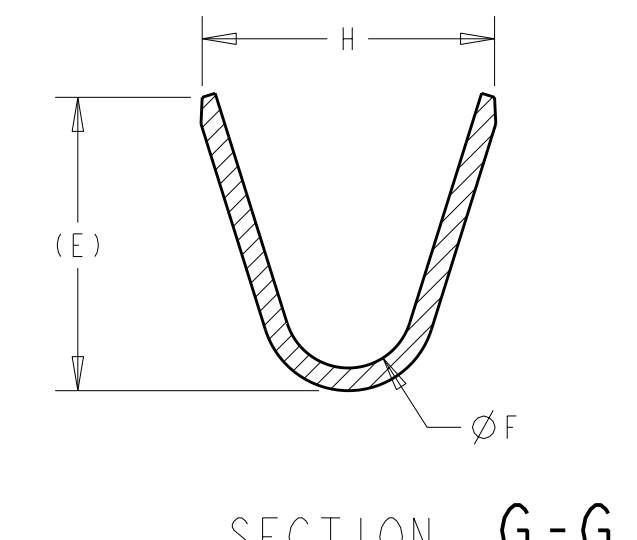
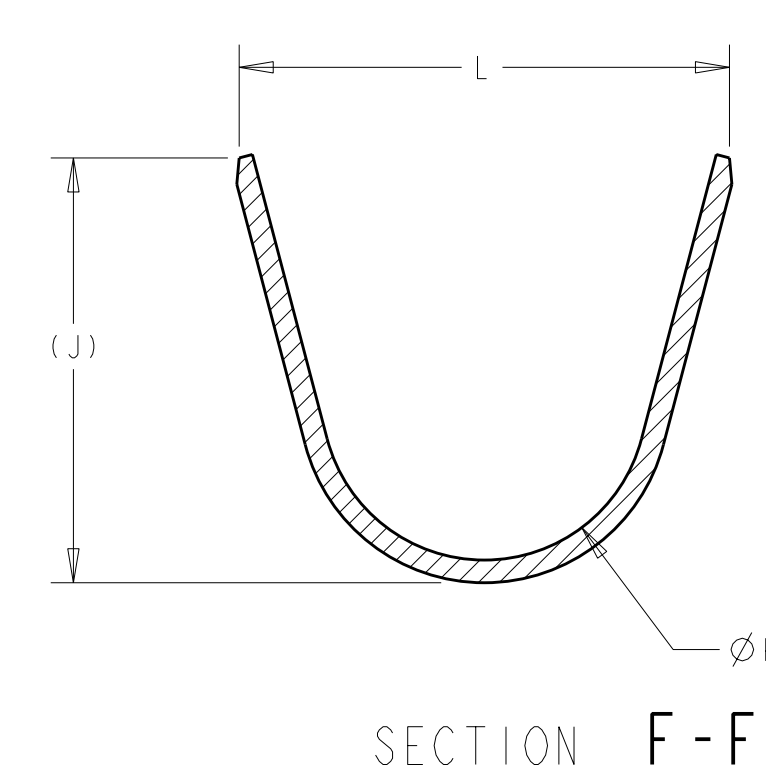
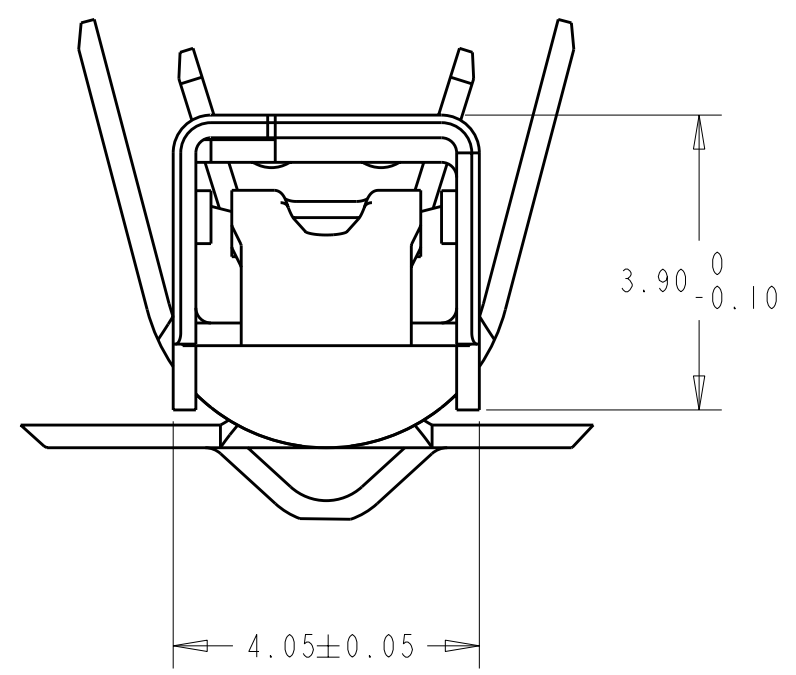
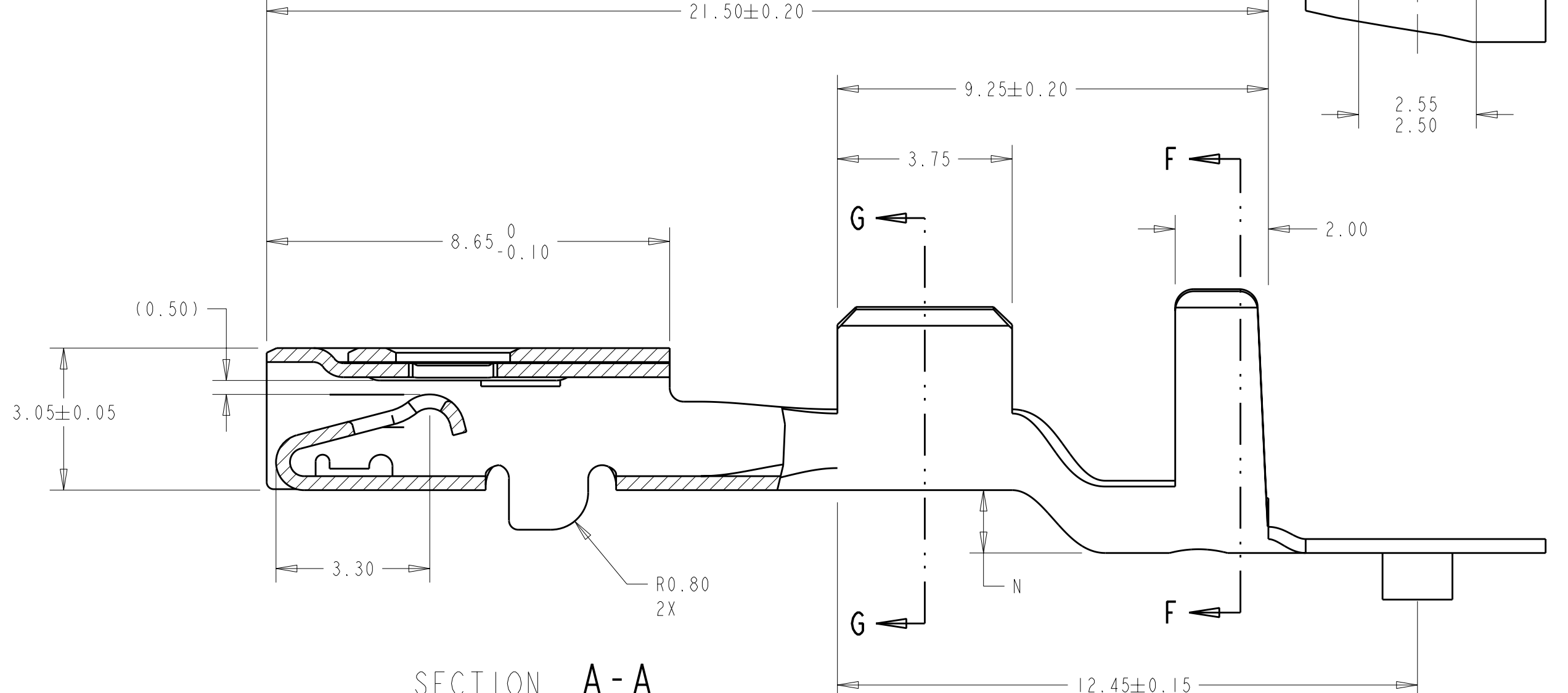
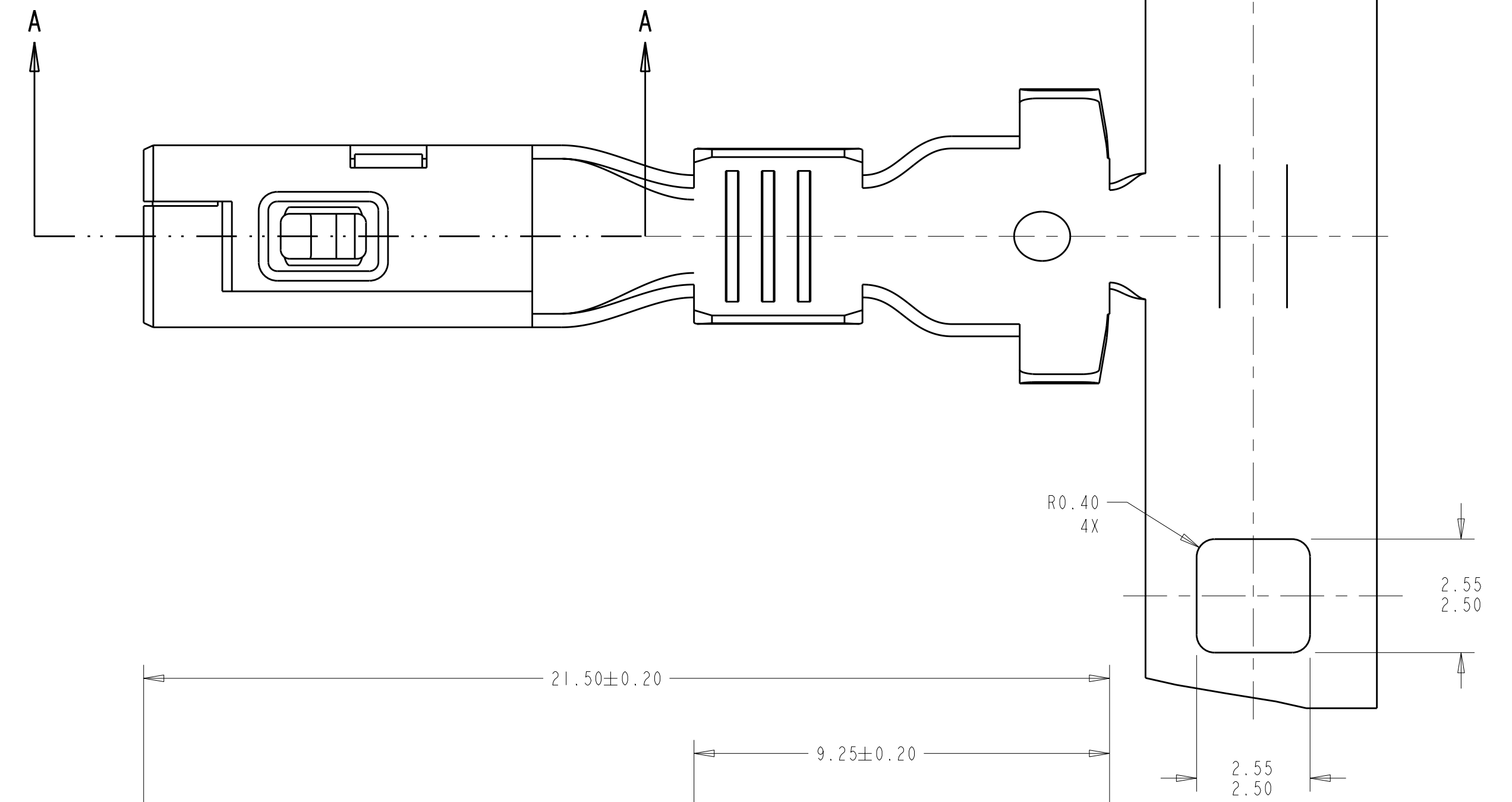
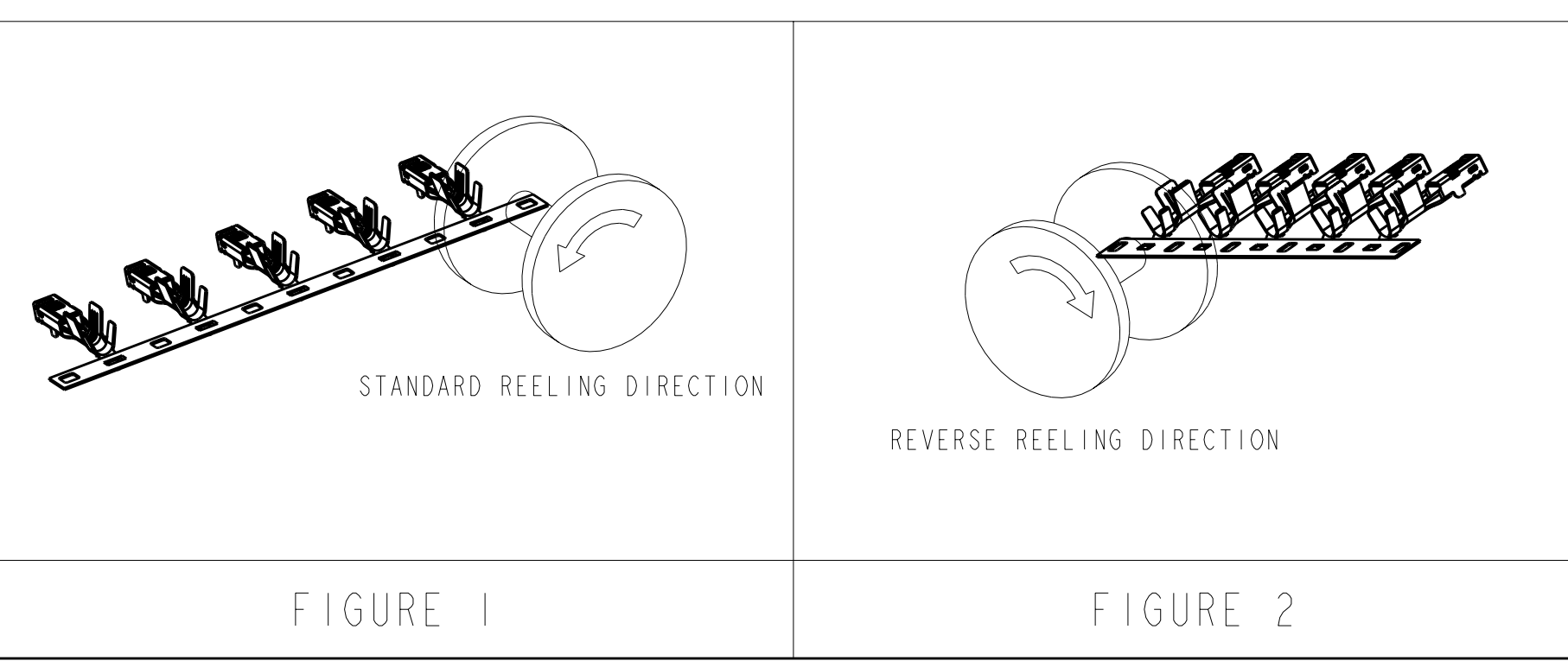


LOC	DIST	REV	DATE	BY	APPD
GE	00	A	16NOV2009	DLD	SLM



- 1 MATERIAL: 0.30 THICK COPPER ALLOY, PREPLATED WITH 0.0008 MINIMUM THICK REFLOW TIN OR BRIGHT TIN. (ELV COMPLIANT)
 ALTERNATE MATERIAL: 0.30 THICK COPPER ALLOY, PREPLATED WITH 0.0008 MINIMUM THICK BRIGHT TIN (ELV COMPLIANT).
2. QUALIFICATION OF THE CRIMP APPLICATION TOOLING SHALL BE CONTROLLED BY THE REQUIREMENTS ESTABLISHED UNDER USCAR 21.
- 3 LUBRICANT, NYE UNIFLOR 8917, ADDED TO INTERIOR OF RECEPTACLE BOX. QUANTITY SUFFICIENT TO COAT INTERIOR BEAM AND ALLOWING FOR SOME RESIDUAL PASTE TO RESIDE INSIDE. SEEPAGE FROM BOX OPENINGS ALLOWED.

STATUS	LUBRICANT	REELING	N	L	ØK	J	H	ØF	E	WIRE SIZE	PART NUMBER
NOT RELEASED										12 AWG	1-776546-2
RELEASED										14 AWG	1-776546-1
NOT RELEASED										16 AWG	1-776546-0
NOT RELEASED										18 AWG	776546-9
NOT RELEASED										20 AWG	776546-8
RELEASED										22 AWG	776546-7
NOT RELEASED			1.35	6.8	4.30	6.09	4.7	2.70	5.25	12 AWG	776546-6
RELEASED			1.35	6.5	4.30	5.62	3.9	1.70	3.88	14 AWG	776546-5
NOT RELEASED			1.10	5.6	3.80	4.54	3.9	1.70	3.88	16 AWG	776546-4
NOT RELEASED			1.10	5.6	3.80	4.54	3.3	1.30	2.76	18 AWG	776546-3
NOT RELEASED			0.90	5.0	3.40	4.11	3.3	1.30	2.76	20 AWG	776546-2
RELEASED			0.90	5.0	3.40	4.11	2.5	0.90	2.11	22 AWG	776546-1



DIMENSIONS: mm	TOLERANCES UNLESS OTHERWISE SPECIFIED:	9 PLC ±0.3	1 PLC ±0.10	5 PLC ±0.1	4 PLC ±0.1	ANGLES ±4°	FINISH
MATERIAL	FINISH	DWN D. DRUMMOND 16NOV2009		CHK S. MANKARYOS 16NOV2009		APPD S. MANKARYOS 16NOV2009	
CUSTOMER DRAWING		Tyco Electronics		Tyco Electronics		Harrisburg, PA 17105-3608	
SCALE 10:1		SHEET 1 OF 1		REV A		RESTRICTED TO	