

**Contact assignment:**

- 1) brown
- 2) white
- 3) blue
- 4) black
- 5) green-yellow

**Contact assignment:**

- 1) white
- 2) brown
- 3) green
- 4) yellow
- 5) grey
- 6) pink
- 7) blue
- 8) red

**Technical specification:**

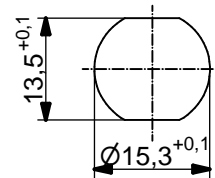
|                                     |                           |                  |           |
|-------------------------------------|---------------------------|------------------|-----------|
| Rated voltage:<br>IEC 61076-2-101   | 4pos 250 V                | 5pos 60 V        | 8pos 30 V |
| Current rating:<br>IEC 61076-2-101  | 4/5pos 4 A at 40°C        | 8pos 2 A at 40°C |           |
| Insulation resistance:<br>IEC 60512 | ≥100 MΩ                   |                  |           |
| Pollution degree:<br>IEC 60664-1    | 3/2                       |                  |           |
| Degree of protection:<br>IEC 60529  | IP 67, in mated condition |                  |           |
| Temperature range:                  | -30°C ... +80°C           |                  |           |
| Mating cycles:<br>IEC 60512-9a      | ≥100                      |                  |           |

**Materials:**

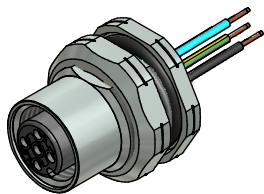
|                                |                           |
|--------------------------------|---------------------------|
| Contact:                       | CuZn                      |
| Contact plating:               | Nickel, gold plated       |
| Contact carrier:               | PBT GF, UL 94             |
| Sealing connector:<br>chassis: | FPM<br>NBR                |
| Counternut:                    | CuZn, nickel plated       |
| Socket housing:                | CuZn, nickel plated       |
| Grouting:                      | Polyurethane-resin, UL 94 |

**Installation specification:**

|                          |                                                                     |
|--------------------------|---------------------------------------------------------------------|
| recommended torque:      | 1-1,2 Nm                                                            |
| Conec installation tool: | Torque wrench:<br>36-000200<br>Insert across flats 19:<br>36-000250 |



Minimum wall thickness 1,5mm, alternativ panel cut-out d=15,3



| Part no: | Description:              | Pos | Length L: | Wire:          |
|----------|---------------------------|-----|-----------|----------------|
| 43-01079 | SAL - 12 - FKH4 - 0,5 - 9 | 4   | 0,5m      | AWG 24 PVC, UL |
| 43-xxxxx | SAL - 12 - FKH4 - ... - 9 | 4   | x         |                |
| 43-01081 | SAL - 12 - FKH5 - 0,5 - 9 | 5   | 0,5m      |                |
| 43-xxxxx | SAL - 12 - FKH5 - ... - 9 | 5   | x         |                |
| 43-01098 | SAL - 12 - FKH8 - 0,5 - 9 | 8   | 0,5m      |                |
| 43-xxxxx | SAL - 12 - FKH8 - ... - 9 | 8   | x         |                |

|                                                                         |                                                                                                                                                                      |                                  |                                                                      |                           |  |
|-------------------------------------------------------------------------|----------------------------------------------------------------------------------------------------------------------------------------------------------------------|----------------------------------|----------------------------------------------------------------------|---------------------------|--|
| DO NOT ALTER CAD DRAWING BY HAND<br>Directive 2002/95/EC RoHS compliant | Index: c 23.11.12 MG Ä4555<br>Data sheet revised, technical specification changed, materials corrected                                                               | dim. in mm                       | <b>title:</b><br>Female socket M12x1 with wire,<br>backmounting, PG9 |                           |  |
|                                                                         | tolerance of wire: L ≤ 0,5m: L + 20mm<br>L > 0,5m: L + 4%                                                                                                            | date                             | <b>dwg no:</b>                                                       |                           |  |
|                                                                         | general tolerance: 0 ± 0,50mm<br>0,0 ± 0,25mm<br>0,00 ± 0,10mm                                                                                                       | drawn 20.02.07<br>appd. 01.03.07 | name<br>Fromm<br>Mankopf                                             | <b>43K1A323</b>           |  |
|                                                                         | THIS DRAWING MAY NOT BE COPIED OR REPRODUCED IN ANY WAY, AND MAY NOT BE PASSED ON TO A THIRD PARTY WITHOUT WRITTEN PERMISSION. OWNERSHIP AND COPYRIGHT OF CONEC GmbH |                                  |                                                                      | <b>part no:</b> see table |  |