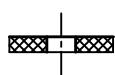
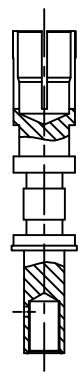
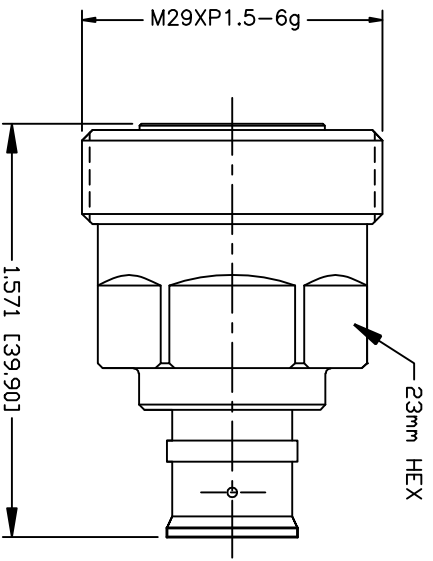


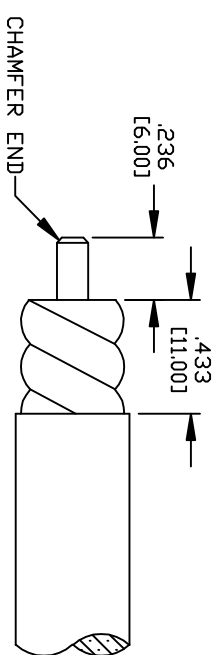
PART NO. **RFD-1625DS-H8**

REV	DESCRIPTION	DWN	DATE	APPROVED
-	ENGINEERING RELEASE	DW	11/3/20	JDM



CONTACT  
SOLDER ONLY

INSULATOR



RECOMMENDED STRIPPING DIMENSIONS

**SPECIFICATIONS:**

IMPEDANCE: 50 Ohms  
 INTERFACE: IEC 61169-4  
 FREQUENCY RANGE: 0-7.5 GHz  
 INSERTION LOSS: -0.1 dB MAX  
 RETURN LOSS: 32 dB 0-1500 MHz  
 RETURN LOSS: 27 dB 1500-3000 MHz  
 RETURN LOSS: 21 dB 3000-5000 MHz  
 RETURN LOSS: 18 dB 5000-6000 MHz  
 3rd ORDER IM TEST METHOD: 2x43 dBm  
 COUPLING TORQUE: 25 Nm MIN.  
 CABLE RETENTION FORCE: 250 Nm  
 ENVIRONMENTAL/COMPLIANCE: IP68 MATED / RoHS  
 TEMPERATURE RANGE: -55°C +85°C  
 DURABILITY: >500 MATING CYCLES  
 DIELECTRIC WITHSTANDING VOLTAGE: 4000 VRMS SEA LEVEL  
 INSULATION RESISTANCE: >10,000 MΩ  
 NET WEIGHT: 0.185 lb  
 FOR FSJ2-50, LCF38-50J, LDF2-50, SCF38-50J, SPF-375,  
 SPO-375 & SPP-375 CABLE

#	DESCRIPTION	QTY	MATERIAL	FINISH
5	COUPLING NUT	1	BRASS	CUSnZn ALLOY
4	GASKET	1	SILICONE	---
3	PIN	1	BRASS	SILVER
2	INSULATOR	2	PTFE	NATURAL
1	BODY	1	BRASS	CUSnZn ALLOY

CUSTOMER  
 OUTLINE DRAWING  
 ALL DIMENSIONS  
 ARE REFERENCE ONLY  
 UNLESS OTHERWISE SPECIFIED:  
 DIMENSIONS ARE IN INCHES  
 AND [MILLIMETERS]

PROPRIETARY AND CONFIDENTIAL  
 THIS DRAWING CONTAINS  
 INFORMATION PROPRIETARY TO  
 RF INDUSTRIES. ANY  
 UNAUTHORIZED USE OF THIS  
 DRAWING IS EXPRESSLY  
 PROHIBITED WITHOUT WRITTEN  
 PERMISSION FROM RF  
 INDUSTRIES. ANY VIOLATION IS  
 PUNISHABLE UNDER U.S.  
 COPYRIGHT LAWS.

**RF Industries**  
 DIVISION OF RF INDUSTRIES, LTD. (858) 549-6346 FAX  
 RFINDUSTRIES.COM  
 7610 MIRAMAR RD.  
 SAN DIEGO, CA 92126  
 (858) 549-6340

**7/16 DIN FEMALE**  
**DIRECT SOLDER, FOR 3/8" SUPERFLEX**

CABLE GROUP DWG #	H8	REVISION	---
FORMAT	A	SCALE	NTS
CONTROL #	000000	SHEET	1 OF 1

D:\MCGREYNOLDS  
 11/3/20  
 09/09/20