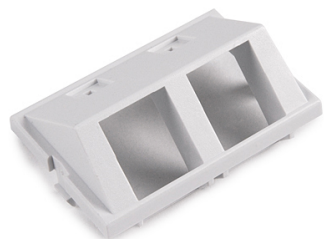


Specification Sheet

Part Number: FPMIAD15-W



Modular Faceplate Angled Dual Insert With Icons, ABS, White, 2/pkg

Article Number

854-35366

Type

FPMIAD15

Color

White (WH)

Features & Benefits

- Faceplate inserts can be loaded and unloaded from the front.
- Single gang faceplate will accept 3U of inserts.
- Dual gang faceplate will accept 6U of inserts.

Quantity Per

bag

Product Description

HellermannTyton's line of modular faceplates provides a great amount of flexibility. Offered in single gang or dual gang styles, these faceplates can be used with flush or angled modules. Up to four angled ports can be installed in a single gang faceplate, providing an efficient solution for high capacity applications.

Short Description

Modular Faceplate Angled Dual Insert With Icons, ABS, White, 2/pkg

Global Part Name

FPMIAD15

Technical Description

Modular Faceplate Angled Dual Insert With Icons,White

Variant

Modular

Material

Acrylonitrile Butadiene Styrene (ABS)

Material Shortcut

ABS

UL Listed (US and Canada)

Yes

UL Listed (US

Yes

Package Quantity(Imperial)

2

Package Quantity (Metric)

2

Customs Number

3925900000