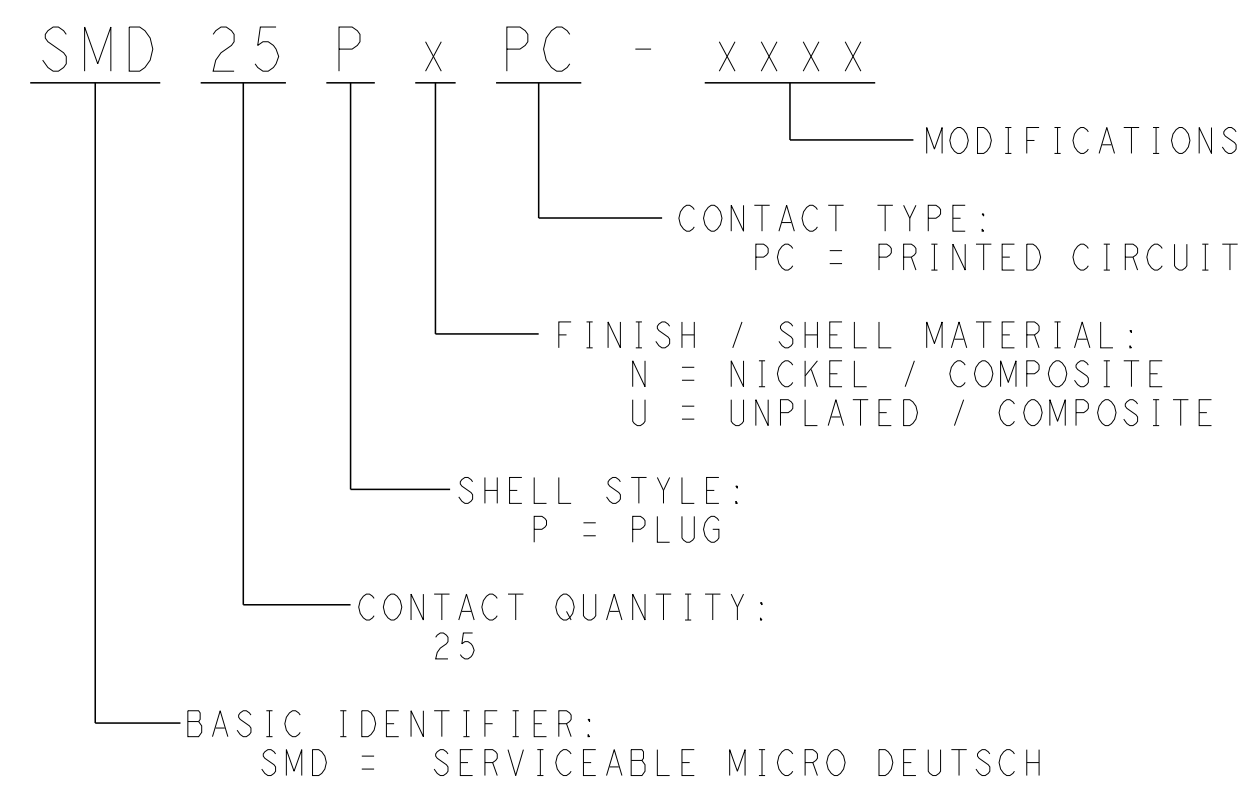


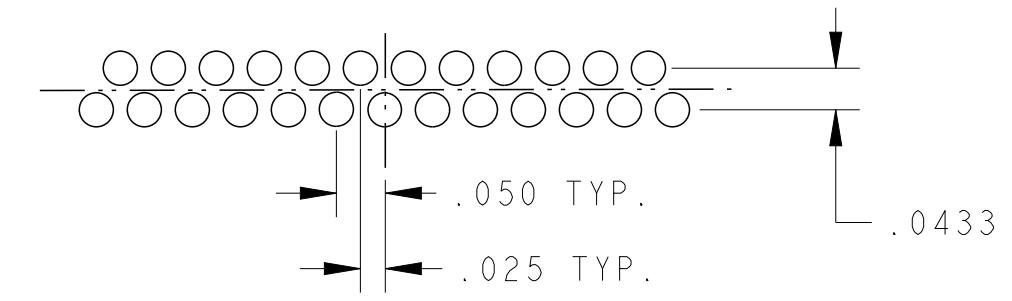
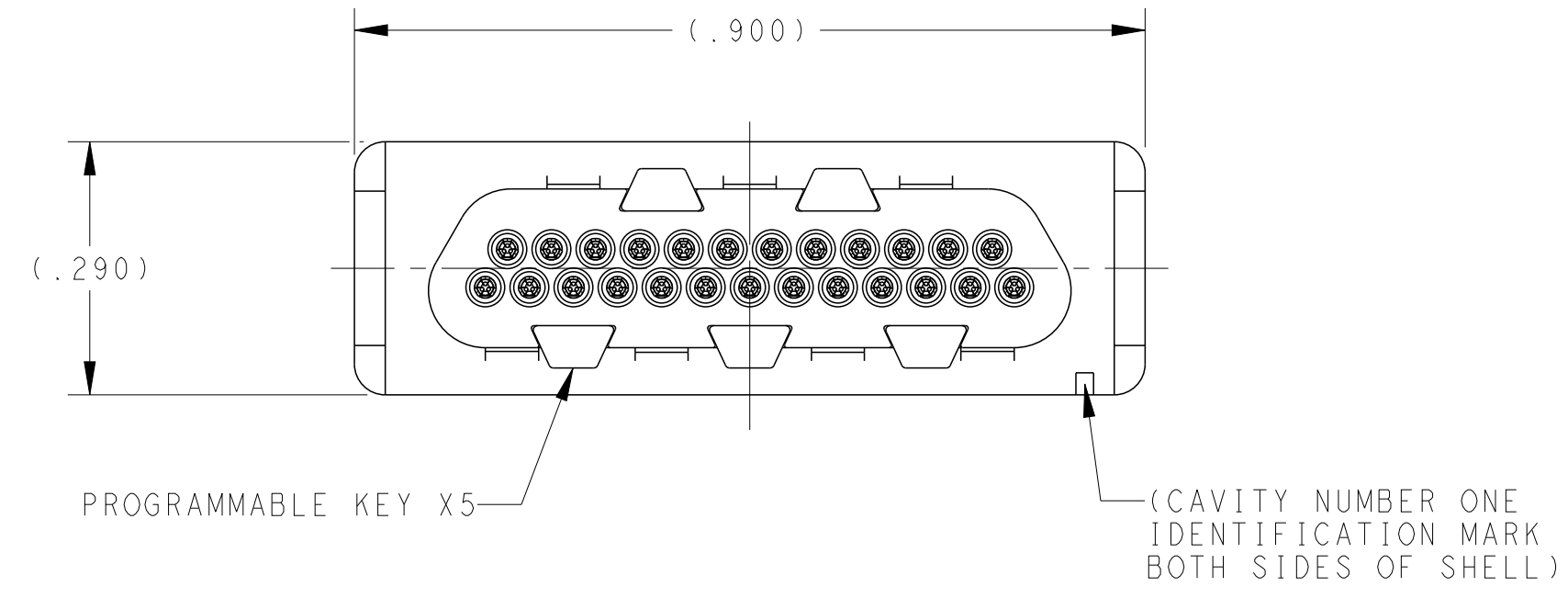
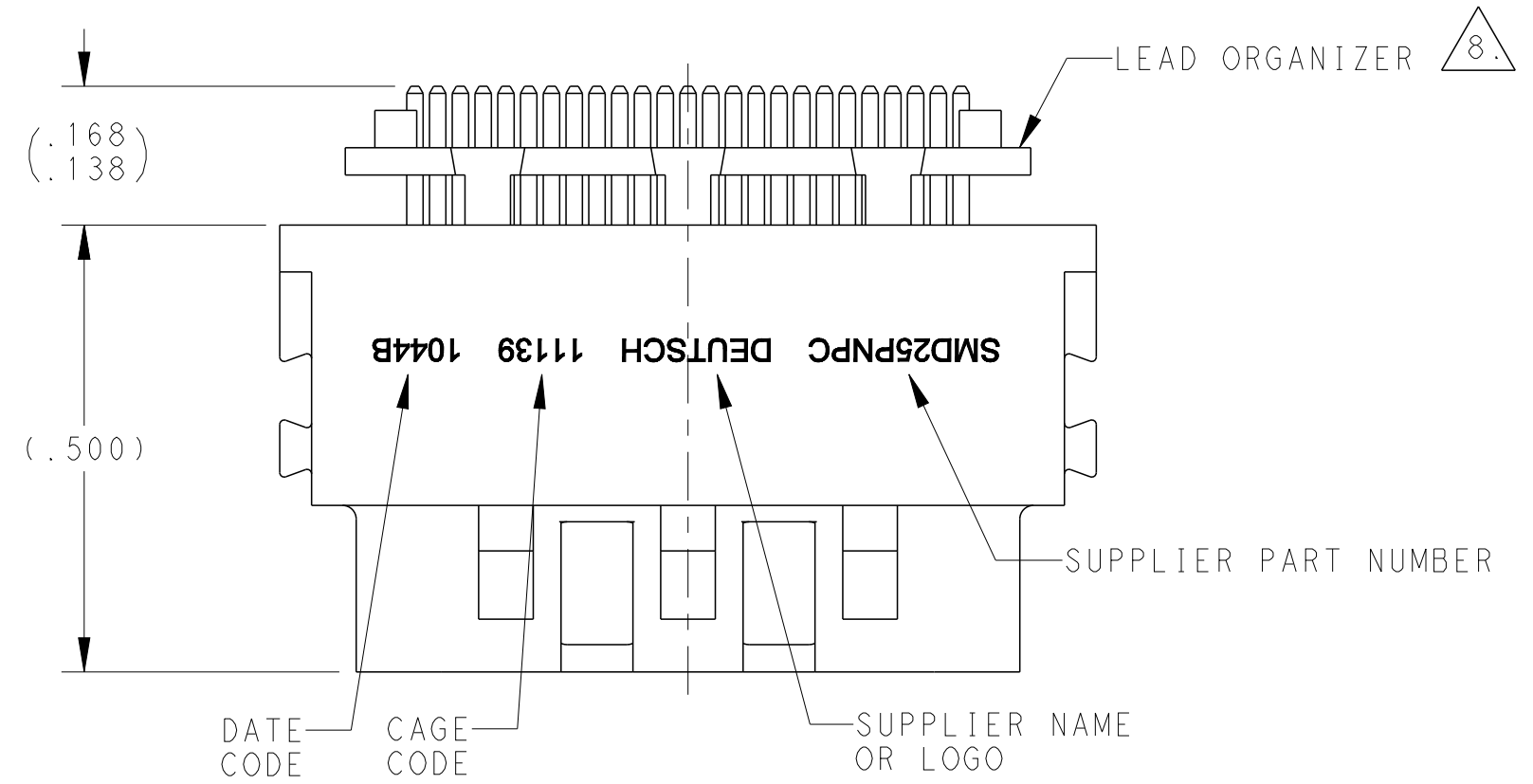
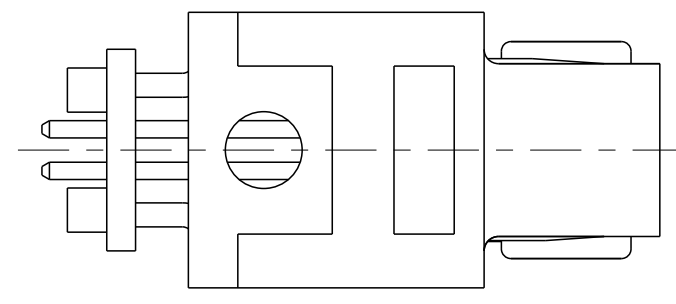
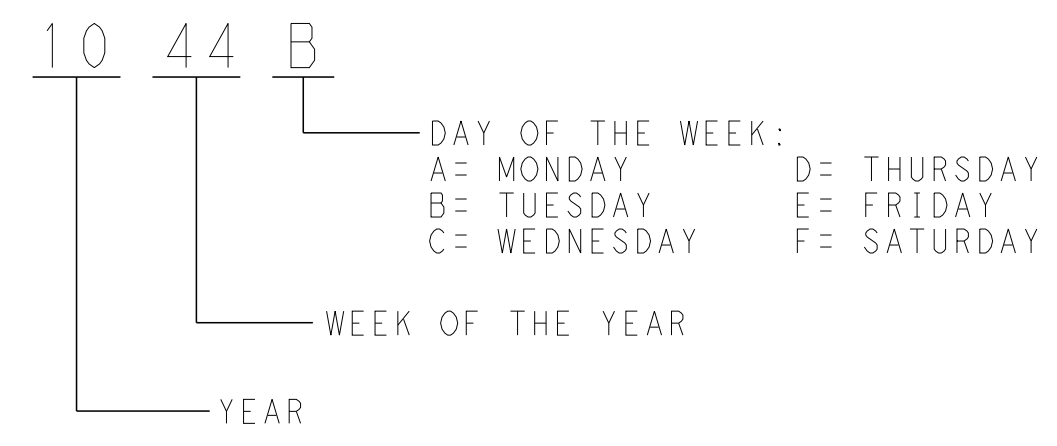
**T.E. PROPRIETARY AND CONFIDENTIAL**  
 This drawing contains proprietary information that shall not be disclosed, duplicated nor used in whole or in part for any purpose other than to evaluate this drawing.

REVISIONS				
P	LTR	DESCRIPTION	DATE	APVD
A		REVISED PER E.O D0196	120831	JH
B		REVISED PER ECO-16-012131	160721	BN AR

**PART NUMBER BREAKDOWN**



**DATE CODE FORMAT**



RECOMMENDED CIRCUIT BOARD CUT-OUT

NOTES CONTINUED ON SHEET TWO

- MATERIAL / FINISH:  
 SHELL: RIGID COMPOSITE / SEE PART NUMBER BREAKDOWN  
 INSERT: RIGID: COMPOSITE / NATURAL  
 CONTACTS: COPPER ALLOY / GOLD  
 KEYS: RIGID COMPOSITE / NATURAL

1. DIMENSIONS ARE IN INCHES

NOTES: UNLESS OTHERWISE SPECIFIED

THIS DRAWING IS A CONTROLLED DOCUMENT.		DWN 21 JUL 2016 A RASMUSSEN	<b>STE</b> TE Connectivity	
DIMENSIONS: inches		CHK W ALLEN 110621		
TOLERANCES UNLESS OTHERWISE SPECIFIED:		APVD A RENGIFO 120904	NAME CONNECTOR, PLUG IN-LINE, P.C. MOUNTING SMD SERIES, SIZE 25	
0 PLC ±.1		PRODUCT SPEC	SIZE CAGE CODE DRAWING NO RESTRICTED TO	
1 PLC ±.01		APPLICATION SPEC	A211139 C-SMD25PxPC_ENV	
2 PLC ±.005		WEIGHT	SCALE 5:1 SHEET 1 OF 2 REV B	
3 PLC ±.0005		CUSTOMER DRAWING		
4 PLC ±.0005 ±.5°				
MATERIAL FINISH				
SEE NOTE 2				

THIS DRAWING IS UNPUBLISHED. RELEASED FOR PUBLICATION 2016  
 © COPYRIGHT 2016 BY TE CONNECTIVITY ALL RIGHTS RESERVED.

**T.E. PROPRIETARY AND CONFIDENTIAL**  
 This drawing contains proprietary information that shall not be disclosed, duplicated nor used in whole or in part for any purpose other than to evaluate this drawing.

REVISIONS				
P	LTR	DESCRIPTION	DATE	APVD
		SEE SHEET 1		



- 8. LEAD ORGANIZER TO REMAIN ON PART DURING PCB MOUNTING AND SEATS WITHIN CONNECTOR BODY AFTER MOUNTING.
- 7. MARKING CONTAINS AT MINIMUM: DEUTSCH PART NUMBER, DEUTSCH NAME OR SYMBOL, CAGE CODE AND DATE CODE. MARKING MAY NOT APPEAR EXACTLY AS ILLUSTRATED.
- 6. CONSULT FACTORY FOR AVAILABILITY.
- 5. PROGRAMMABLE KEYS (5 EA) SHIPPED LOOSE.
- 4. FOR ARRANGEMENT PATTERN, SEE MIL-DTL-83513/3.
- 3. PERFORMANCE DATA:
  - OPERATING TEMPERATURE: -55°C TO +125°C
  - WIRE SIZE: 25 AWG SOLID WIRE
  - BLIND MATEABLE WITH SMD25Rxxx
  - CONTACT ENGAGEMENT AND SEPARATION FORCES: IN ACCORDANCE WITH MIL-DTL-83513
  - CONTACT RESISTANCE: 7 MILLIOHMS MAXIMUM INITIAL (CRIMP-TO-CRIMP)
  - CANTACT RETENTION: 3 POUNDS MINIMUM
  - CRIMP TENSILE STRENGTH: IN ACCORDANCE WITH MIL-DTL-83513
  - CURRENT RATING: 2.5 AMPS (CONTINUOUS) WHEN TESTED IN ACCORDANCE WITH MIL-DTL-83513
  - DURABILITY: IN ACCORDANCE WITH MIL-DTL-83513
  - DWV AT SEA LEVEL: 500 VAC
  - EMI SHIELDING EFFECTIVENESS WHEN TESTED IN ACCORDANCE WITH MIL STD-13444 METHOD 3008:
    - 50 DB ATTENUATION AT 1GHZ
    - 35 DB ATTENUATION AT 2GHZ
    - 30 DB ATTENUATION AT 4GHZ
    - 25 DB ATTENUATION AT 6GHZ
  - ENDURANCE AT TEMPERATURE: WHEN TESTED IN ACCORDANCE WITH EN2591-301 METHOD B DURATION 1000 HOURS
  - FLUID RESISTANCE: IN ACCORDANCE WITH EN2591-315 WHEN TESTED WITH PHASE I AMBIENT TEMPERATURE AND THIRD PHASE PER EN3909 TABLE I
  - HUMIDITY: IN ACCORDANCE WITH MIL-DTL-83513
  - INSERT RETENTION: IN ACCORDANCE WITH MIL-DTL-83513
  - INSULATION RESISTANCE: IN ACCORDANCE WITH MIL-DTL-83513
  - LOW SIGNAL LEVEL CONTACT RESISTANCE: IN ACCORDANCE WITH MIL-DTL-83513
  - MAGNETIC PERMEABILITY: IN ACCORDANCE WITH MIL-DTL-83513
  - MARKING PERFORMANCE: IN ACCORDANCE WITH MIL-DTL-83513
  - SALT MIST: 48 HOURS FOR EXPOSED CONTACTS, 500 HOURS FOR REMAINING ITEMS, WHEN TESTED IN ACCORDANCE WITH EN2591-307
  - SHOCK: 30G (HALF-SINE) WHEN TESTED IN ACCORDANCE WITH EIA-364-27 TEST CONDITION H
  - VIBRATION: 10G (10 HZ TO 500 HZ) WHEN TESTED IN ACCORDANCE WITH EIA-364-28 TEST CONDITION II DURATION PER CONDITION IV

NOTES CONTINUED FROM SHEET ONE

THIS DRAWING IS A CONTROLLED DOCUMENT.		DWN A. RASMUSSEN	110505	TE Connectivity	
DIMENSIONS: inches		CHK M. ALLEN	110621		
TOLERANCES UNLESS OTHERWISE SPECIFIED:		APVD A. RENGIFO	120904	NAME CONNECTOR, PLUG IN-LINE, P.C MOUNTING SMD SERIES, SIZE 25	
		PRODUCT SPEC	-	SIZE A2	
0 PLC ± 1 PLC ±1 2 PLC ±01 3 PLC ±005 4 PLC ±0005 ANGLES ±5° FINISH -		APPLICATION SPEC	-	CAGE CODE 11139	DRAWING NO SMD25P x PC
MATERIAL SEE PAGE 1 SEE PAGE 1		WEIGHT	-	RESTRICTED TO	-
CUSTOMER DRAWING			SCALE	5:1	SHEET 2 OF 2 REV B