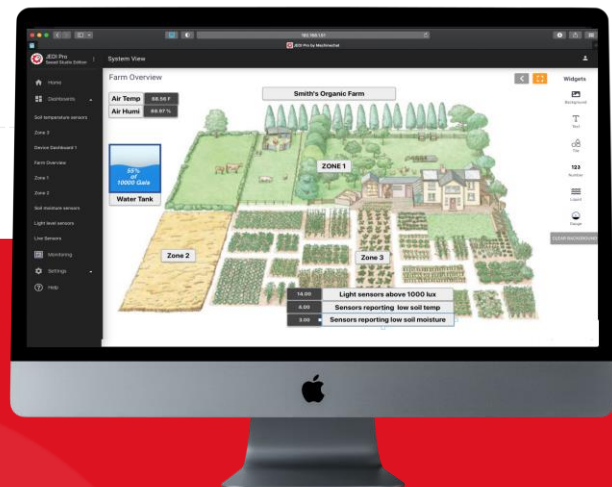


JEDI Pro

Seed Studio Edition

PRODUCT TECHNICAL OVERVIEW

Machinechat® JEDI Pro Seed Studio Edition is a turnkey software application that allows you to easily add data collection, visualization, monitoring and managed storage to commercial IoT deployments. Because JEDI Pro runs as a local service on server or single board computer, there is no need for sending all your data to the cloud and there are no monthly subscription fees.



PRODUCT FEATURES

- Easily develop and deploy your IoT projects with a beautiful graphical interface in days instead of months
- Single binary with no other dependencies – just download and run
- Modern browser-based graphical user interface with multi-user support that allows access to JEDI Pro from anywhere on your network
- Includes integrated Seed Studio SenseCAP LoRaWAN data collector (Chirpstack installation required)
- Drag and drop and point-and-click menus allow for easy and quick configuration of dashboards, rules, monitoring and storage.
- Virtual data sensor feature allows developers to simulate project deployment scenarios
- On prem, allowing users to eliminate data privacy issues and avoid cloud subscription costs
- Supports SSL for secure access
- Single license supports one PC/Mac/Raspberry Pi/BeagleBone server/SBC and up to 200 devices.

HARDWARE AND SYSTEM REQUIREMENTS

- Intel x86 PC or server, Raspberry Pi (2B or higher) BeagleBoard® AM335x-based BeagleBone boards
- Microsoft Windows 10
- Apple Mac OS 10.13.6 and above
- Ubuntu Linux 16.04 and above
- AM3358 Debian Linux OS
- Raspberry Pi OS

MEMORY AND STORAGE REQUIREMENTS

Memory : 512MB or greater

Storage : 35MB minimum of disk or flash space for JEDI Pro application



DATA COLLECTION

- Integrated HTTP, TCP, and Seeed Studio SenseCAP data collectors allow for easy data collection
- Custom data collector plug-ins allow for collecting data from any device, sensor or application without altering their native protocols
- Integrated MQTT Broker with optional TLS encryption allows for on-prem data collection



DATA MONITORING

- Real-time rules engine for monitoring data
- Email, SMS* and custom action alerts
- Networked device monitoring

*SMS requires either a Twilio account or cellular carrier with email to text service.



DATA VISUALIZATION

- Configurable real-time dashboards with support for viewing historical data
- System views allow users to add custom background images and visualize data in the context of the project environment
- Sortable and searchable grid view provides single pane visualization of connected devices and sensors



DATA STORAGE

- Configurable local data storage with data retention controls
- Data stored in CSV format is exportable to virtually any application when necessary