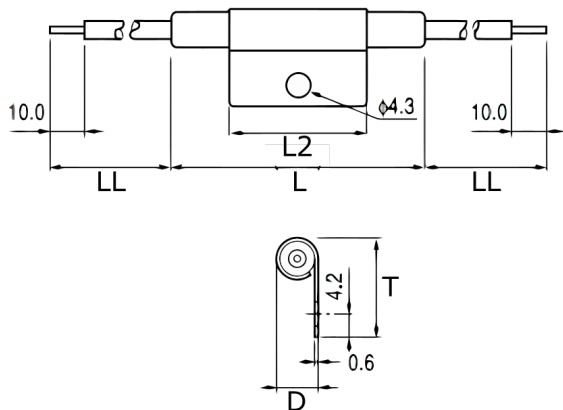


TRS1-110MLR00V

Aliases (USEC110MLR0000)

KEMET, TRS, Thermal Reed Switch, Axial, 2.5C Temperature Accuracy, High Reliability, High-Speed Response, Long Operational Life, Excellent Environmental Durability, High Temperature Accuracy, 110°C, Make



Click [here](#) for the 3D model.

Dimensions

| | |
|----|------------|
| D | 7.65mm NOM |
| L | 54mm NOM |
| L2 | 34mm NOM |
| T | 18.8mm MAX |
| LL | 200mm NOM |

Packaging Specifications

| | |
|--------------------|----------------|
| Packaging | Rubberband Box |
| Packaging Quantity | 500 |
| Component Weight | 8.5 g |

General Information

| | |
|-------------|-----------------------------------------------------------------------------------------------------------------------------|
| Series | TRS |
| Type | Thermal Reed Switch |
| Style | Axial |
| Description | Thermal Reed Switch |
| Features | High Reliability, High-Speed Response, Long Operational Life, Excellent Environmental Durability, High Temperature Accuracy |
| Lead | Cables |
| RoHS | Yes |
| REACH | Yes |

Specifications

| | |
|-----------------------------|--------------------------------------------------------------------------|
| Switching Temperature | 110C +/-2.5C |
| Temperature Range | -20/+130°C |
| Contact Type | Make |
| Voltage AC | 220 VAC MAX (Opening/Closing) |
| Current | 0.045 Amps AC MAX (Opening/Closing), 1 mAmps MIN (5VDC, Opening/Closing) |
| Resistance | 150 mOhms MAX (Contact Resistance) |
| Max Opening/Closing Power | 10 W (AC) |
| Max Opening/Closing Voltage | 220 V (AC) |
| Differential Temperature | 10C Maximum |