

CUSTOMER PRINT

PART NUMBER: CARA16280XPPXXX90

NOTES:

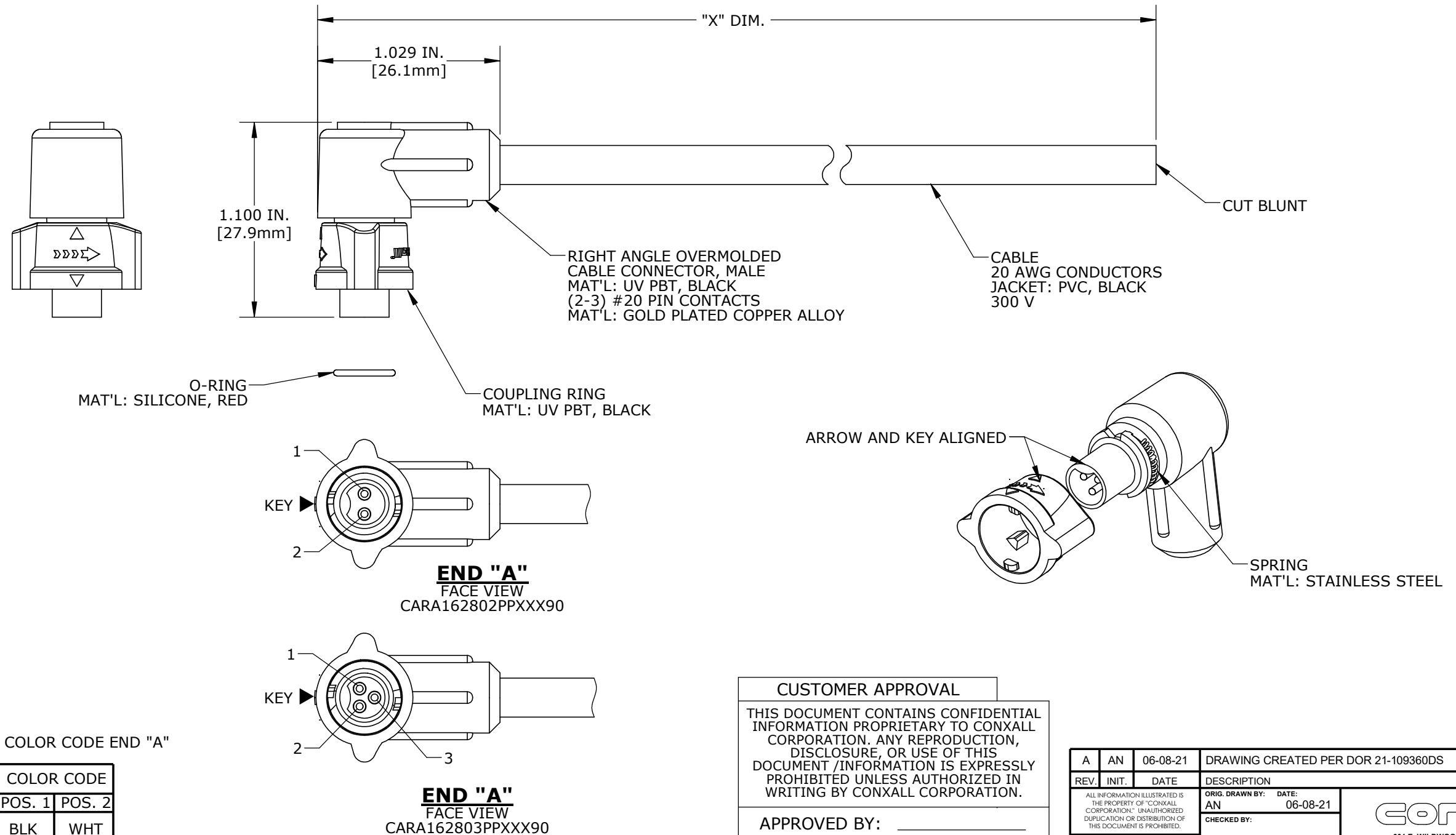
1. FINISHED CABLE ASSEMBLY TO BE COILED
2. OVERMOLD BOOT MATERIAL: UV PBT, BLACK
3. ELECTRICAL TEST: 100% CONTINUITY
4. ALL DIMENSIONS ARE REFERENCE ONLY EXCEPT WHEN NOTED WITH TOLERANCE

ASS'Y P/N	NO. OF POS.
CARA162802PPXXX90	2
CARA162803PPXXX90	3
CARA16280XPPXXX90	

CABLE LENGTH IN "INCHES"
NO. OF POSITIONS

ASS'Y P/N	"X" DIM.
CARA162802PP03990	3 FT. 3 1/2 IN. ± 2 IN. [1M ±50.8mm]
CARA162803PP03990	
CARA162802PP07990	6 FT. 7 IN. ± 2 IN. [2M ±50.8mm]
CARA162803PP07990	
CARA162802PP19790	16 FT. 5 IN. ± 4 IN. [5M ±101.6mm]
CARA162803PP19790	
CARA162802PP39490	32 FT. 9 3/4 IN. ± 8 IN. [10M ±203.2mm]
CARA162803PP39490	
CARA16280XPPXXX90	

CABLE LENGTH IN "INCHES"
NO. OF POSITIONS



ASSY P/N	CABLE	COLOR CODE END "A"		
CARA162802PPXXX90	2/20 AWG O.D. 0.215 REF	COLOR CODE		
		POS. 1	POS. 2	
CARA162803PPXXX90	3/20 AWG O.D. 0.220 REF	WIRE COLOR CODE		
		POS. 1	POS. 2	POS. 3
		BLK	WHT	GRN

DIMENSIONS IN BRACKETS [] ARE METRIC

CUSTOMER APPROVAL

THIS DOCUMENT CONTAINS CONFIDENTIAL INFORMATION PROPRIETARY TO CONXALL CORPORATION. ANY REPRODUCTION, DISCLOSURE, OR USE OF THIS DOCUMENT /INFORMATION IS EXPRESSLY PROHIBITED UNLESS AUTHORIZED IN WRITING BY CONXALL CORPORATION.

APPROVED BY: _____
DATE: _____

RoHS COMPLIANT

A	AN	06-08-21	DRAWING CREATED PER DOR 21-109360DS	
REV.	INIT.	DATE	DESCRIPTION	
	AN	06-08-21	ORIG. DRAWN BY: _____ DATE: 06-08-21 CHECKED BY: _____ APPROVED BY: _____ TITLE: CABLE ASSEMBLY (2-3) #20 PIN CONTACTS INSTA-CLICK™ MICRO-CON-X STANDARD PRODUCT CUSTOMER: _____ PART NUMBER: CARA16280XPPXXX90	
SCALE		SIZE	SHEET	
NTS		B	1 OF 1	
FILE:		DIRECTORY:	PART NUMBER:	REV
CARA16280XPPXXX90		SLW	CARA16280XPPXXX90	A



ALL UNITS ARE IN FEET, INCHES, FRACTION OF INCHES AND DECIMALS.

ALL INFORMATION ILLUSTRATED IS THE PROPERTY OF "CONXALL CORPORATION". UNAUTHORIZED DUPLICATION OR DISTRIBUTION OF THIS DOCUMENT IS PROHIBITED.

- CRITICAL CHARACTERISTIC FLAG PER SPEC. XXXX