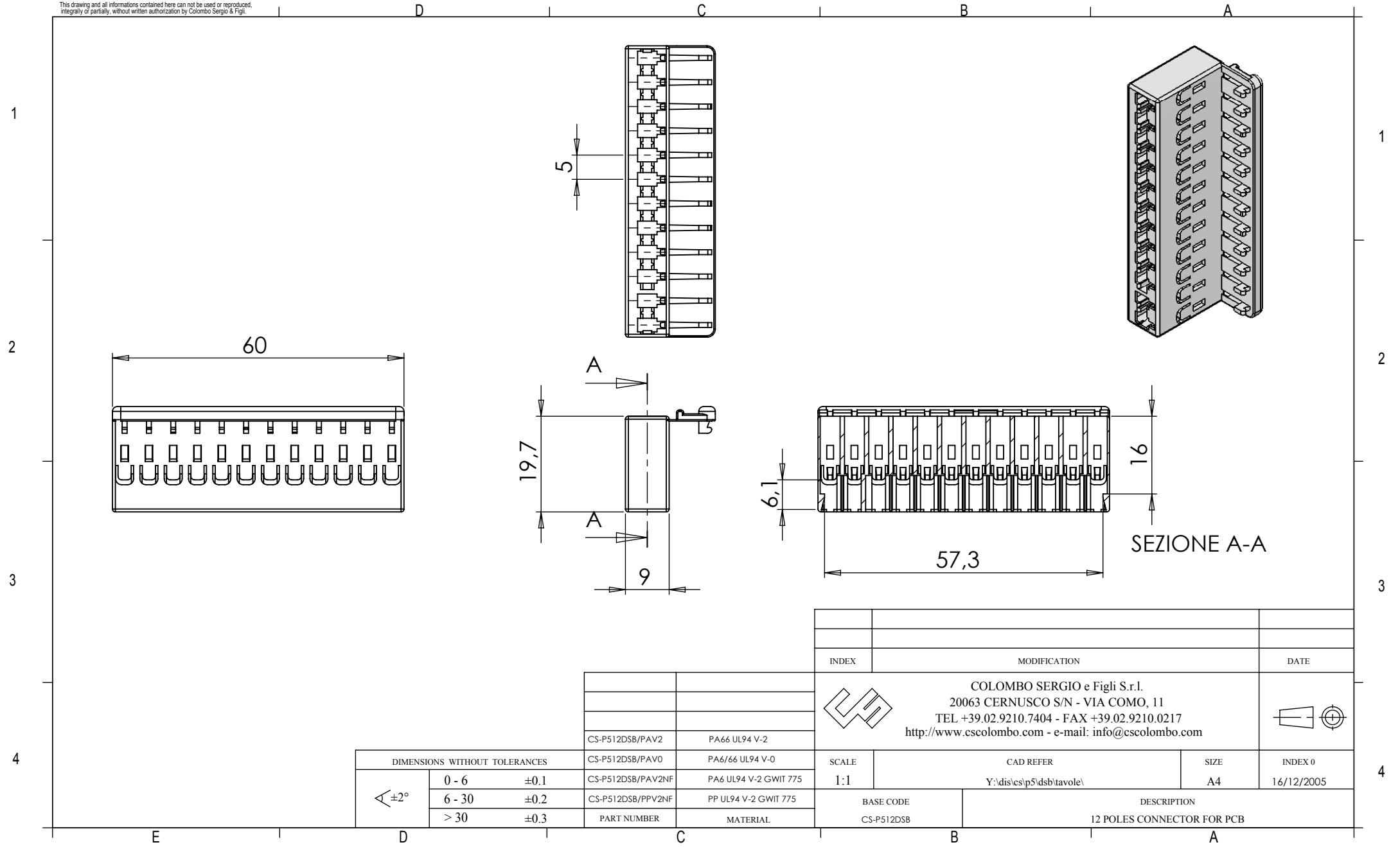

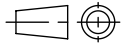


This drawing and all informations contained here can not be used or reproduced, integrity or partially, without written authorization by Colombo Sergio & Figli.



| DIMENSIONS WITHOUT TOLERANCES |        | CS-P512DSB/PAV0 | PA66 UL94 V-0     |
|-------------------------------|--------|-----------------|-------------------|
| $\sphericalangle \pm 2^\circ$ | 0 - 6  | $\pm 0.1$       | CS-P512DSB/PAV2NF |
|                               | 6 - 30 | $\pm 0.2$       | CS-P512DSB/PPV2NF |
|                               | > 30   | $\pm 0.3$       | PART NUMBER       |
|                               |        |                 | MATERIAL          |

|   |                            |   |
|---|----------------------------|---|
| INDEX   | MODIFICATION               | DATE  |
|   |                            |   |
|  <p> <b>COLOMBO SERGIO e Figli S.r.l.</b><br/>                 20063 CERNUSCO S/N - VIA COMO, 11<br/>                 TEL +39.02.9210.7404 - FAX +39.02.9210.0217<br/> <a href="http://www.cscolombo.com">http://www.cscolombo.com</a> - e-mail: <a href="mailto:info@cscolombo.com">info@cscolombo.com</a> </p> |                            |  |
| SCALE   | CAD REFER                  | SIZE  |
| 1:1   | Y:\dis\cs\p5\dsb\tavole\   | A4  |
| INDEX 0   | DATE                       |   |
|   | 16/12/2005                 |   |
| BASE CODE   | DESCRIPTION                |   |
| CS-P512DSB  | 12 POLES CONNECTOR FOR PCB |   |