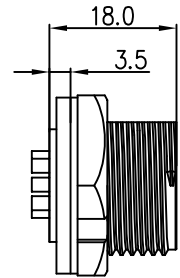


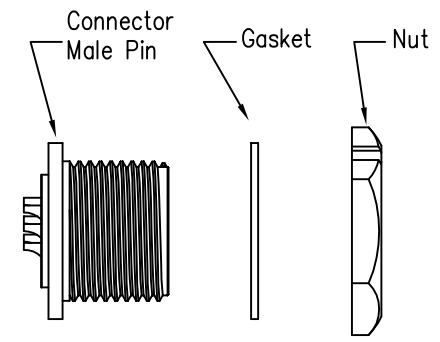
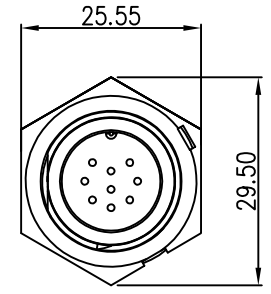
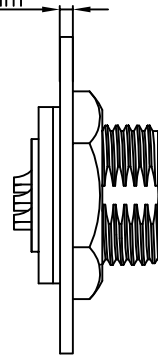
REV.	ECN NO.	DESCRIPTION	SIGN	DATE
C1	N/A	INITIAL DRAWING	Liu	2020/05/17



Recommended Panel Cut-Out



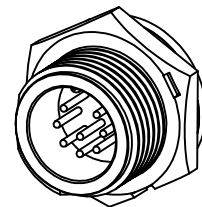
Panel T: Max 3.5mm



23XXX515-01  
Pin Number

7 Pin	8 Pin	9 Pin
P/N: 23007515-01	P/N: 23008515-01	P/N: 23009515-01

Pin Assignments Front View



- Specification:
- 1.Operation Temperature: -45°C~105°C.
  - 2.Insulation Resistance:100MΩ at DC500V.
  - 3.Contact Resistance:<10mΩ.
  - 4.Withstand Voltage: 1300V AC
  - 5.Operating Current:5A
  - 6.Operating Voltage:DC 60V
  - 7.Waterproof Rate:IP67 (Mated)
  - 8.Housing:Nylon, Black
  - 9.Male Pin:Copper Alloy, Gold Plated
  - 10.Gasket:Silicon Gray
  - 11.Panel Nut:Nylon, Black
  - 12.Torque Rate:0.8~1.0N·m
  - 13.RoHS Compliant.
  - 14.UL Compliant.(Only 7Pin & 8Pin)
  - 15.Mating Cap P/N:806-00021-00

UNIT:mm		DESCRIPTION Middle Series Screw Type Front Mount With Male Pin	<b>CHOGORI</b>	PART NO 23XXX515-01	DRAWN BY Liu	DATE 2020/05/17
TOLERANCE .X ±0.25 .XX ±0.15 .XXX ±0.05 ANGLES ±1°	SCALE 1:1	SHEET 1 OF 1		DWG NO	CHECKED BY Mo	DATE 2020/05/17
REV. C1	SIZE A4	* :Inspection Item		CUSTOMER	APPROVED BY Panson	DATE 2020/05/17

THIS INFORMATION IS CONFIDENTIAL AND IS DISCLOSED TO YOU ON CONDITION THAT NO FURTHER DISCLOSURE IS MADE BY YOU TO OTHER THAN CHOGORI PERSONNEL WITHOUT AUTHORIZATION FROM CHOGORI CORP.