

Fuse modular terminal block - PT 10,3-HESILED 1000V - 3062143

Please be informed that the data shown in this PDF Document is generated from our Online Catalog. Please find the complete data in the user's documentation. Our General Terms of Use for Downloads are valid (<http://phoenixcontact.com/download>)




Fuse modular terminal block, connection method: Push-in connection, cross section: 1.5 mm²- 10 mm², AWG: 16 - 6, nominal current: 20 A, nom. voltage: 1000 V, width: 17.6 mm, fuse type: Midget / 10.3 x 38, mounting type: NS 35/7,5, NS 35/15, color: black

Your advantages

- Fuse holder for fusing PV strings 1000 V DC
- For 10 x 38 gPV fuse-links in accordance with IEC 60269-6
- Quick identification of faulty fuses regardless of the current direction, thanks to LED status indicator



Key Commercial Data

Packing unit	10 pc
Minimum order quantity	10 pc
GTIN	 4 046356 724739
GTIN	4046356724739

Technical data

General

Number of levels	1
Number of connections	2
Nominal cross section	10 mm ²
Color	black
Insulating material	PA
Flammability rating according to UL 94	V0
Maximum power dissipation for nominal condition	3 W
Fuse	Midget / 10.3 x 38
Rated surge voltage	6 kV
Degree of pollution	3
Overvoltage category	III
Insulating material group	IIIa

Fuse modular terminal block - PT 10,3-HESILED 1000V - 3062143

Technical data

General

Maximum power dissipation	3 W (Fuse insert)
LED voltage range	250 V AC ... 1000 V AC
Connection in acc. with standard	IEC 60269-1 / -2
Maximum load current	20 A (the current is determined by the fuse used)
Nominal current I_N	20 A (the current is determined by the fuse used)
Nominal voltage U_N	1000 V (the voltage is determined by the fuse used)
Open side panel	No

Dimensions

Width	17.6 mm
Length	87 mm
Height NS 35/7,5	63 mm
Height NS 35/15	70.5 mm

Connection data

Conductor cross section solid min.	1.5 mm ²
Conductor cross section solid max.	10 mm ²
Conductor cross section flexible min.	1.5 mm ²
Conductor cross section flexible max.	10 mm ²
Conductor cross section AWG min.	16
Conductor cross section AWG max.	6
Conductor cross section flexible, with ferrule without plastic sleeve min.	1.5 mm ²
Conductor cross section flexible, with ferrule without plastic sleeve max.	10 mm ²
Conductor cross section flexible, with ferrule with plastic sleeve min.	1.5 mm ²
Conductor cross section flexible, with ferrule with plastic sleeve max.	10 mm ²
Connection method	Push-in connection
Stripping length	18 mm

Standards and Regulations

Connection in acc. with standard	IEC 60269-1 / -2
Flammability rating according to UL 94	V0

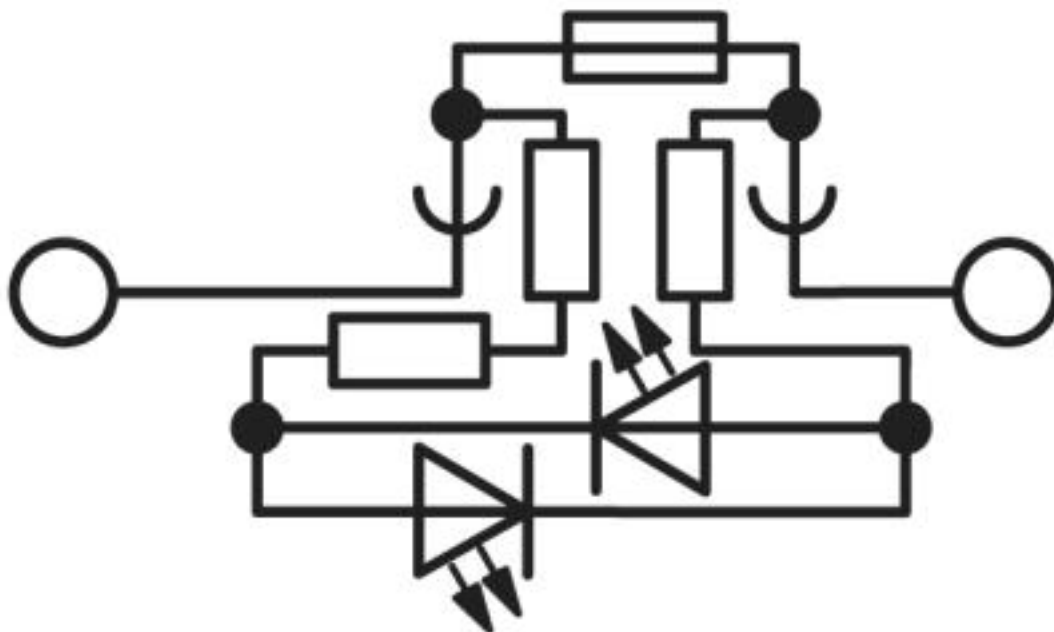
Environmental Product Compliance

China RoHS	Environmentally friendly use period: unlimited = EFUP-e
	No hazardous substances above threshold values

Drawings

Fuse modular terminal block - PT 10,3-HESILED 1000V - 3062143

Circuit diagram



Approvals

Approvals

Approvals

UL Listed / EAC

Ex Approvals

Approval details

UL Listed		http://database.ul.com/cgi-bin/XYV/template/LISEXT/1FRAME/index.htm	FILE E 353282
Nominal voltage UN	1000 V		
Nominal current IN	32 A		
mm ² /AWG/kcmil	16-6		

EAC		RU C- DE.AI30.B.01102
-----	--	--------------------------

Phoenix Contact 2019 © - all rights reserved
<http://www.phoenixcontact.com>

PHOENIX CONTACT GmbH & Co. KG
Flachmarktstr. 8
32825 Blomberg
Germany
Tel. +49 5235 300
Fax +49 5235 3 41200
<http://www.phoenixcontact.com>