



**ANATECH ELECTRONICS INC**  
RF & Microwave Filters & Products

# 1543/1643.5 MHz Ceramic Duplexer

**Part Number: AM1542-1643D1031**



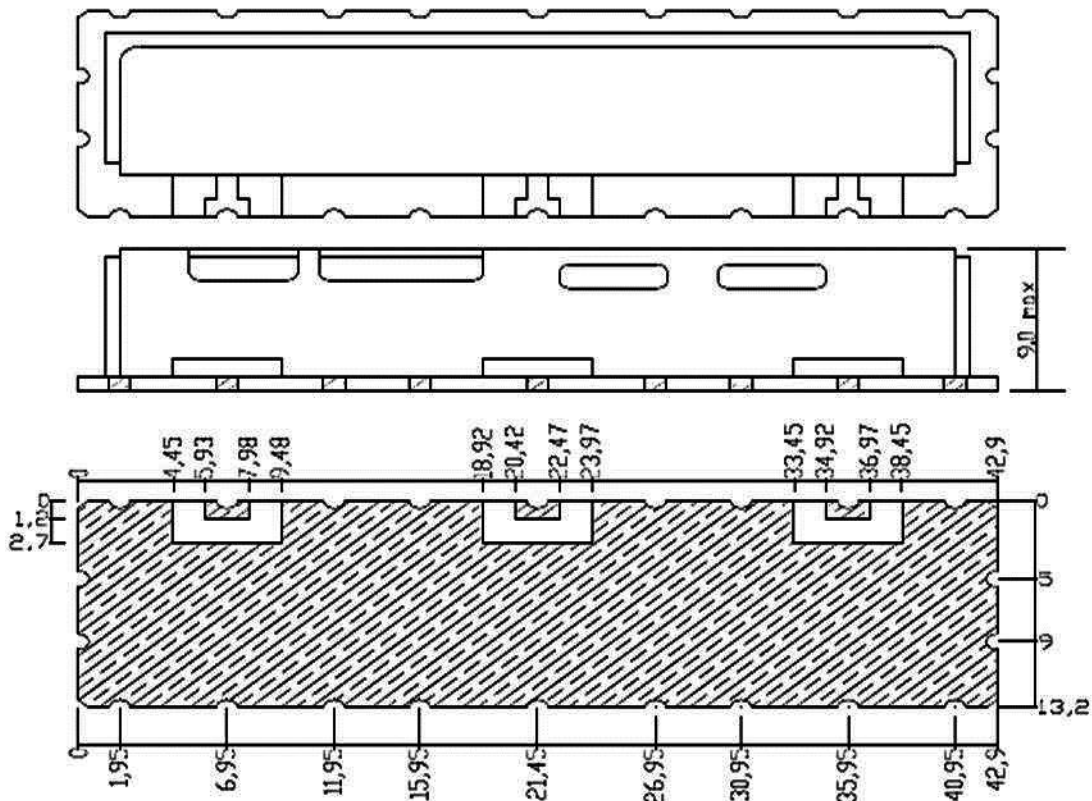
Characteristics	Band 1	Band 2
Passband:	1525-1559 MHz	1626.5-1660.5 MHz
Bandwidth:	Fo ± 17 MHz	Fo ± 17 MHz
Passband Return Loss:	15 dB min	15 dB min
Passband Insertion Loss:	1.3 dB max	1.3 dB max
Passband Ripple:	0.5 dB max	0.5 dB max
Input / Output Impedance:	50 Ohms	50 Ohms
Isolation:	60 dB min	65 dB min
Power Handling:	3 W	3 W

Mechanical	
Mounting Method:	SMT
Dimensions:	42.9 x 13.2 x 9 mm

Environmental	
Operating Temperature:	-30 to +70 deg.C
Storage Temperature:	-50 to +90 deg.C

This product is RoHs compliant.

## Outline Drawing:





**ANATECH ELECTRONICS INC**  
RF & Microwave Filters & Products

# 1543/1643.5 MHz Ceramic Duplexer

Part Number: AM1542-1643D1031



## Response Plot:

