

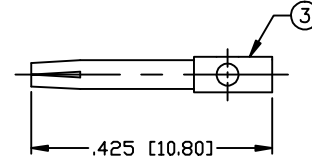
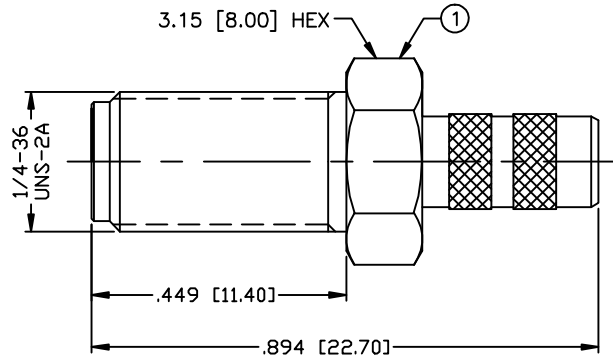
THIS DRAWING CONTAINS INFORMATION PROPRIETARY TO RF INDUSTRIES,  
 ANY UNAUTHORIZED USE OF THIS DRAWING IS EXPRESSLY PROHIBITED  
 WITHOUT WRITTEN PERMISSION FROM RF INDUSTRIES.  
 ANY VIOLATION IS PUNISHABLE UNDER U.S. COPYRIGHT LAWS.

ALL DIMENSIONS ARE REFERENCE ONLY

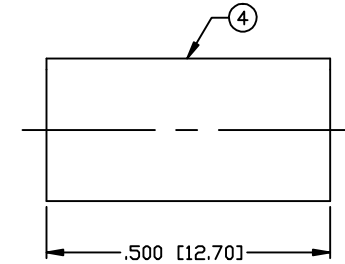
PART NO.

**RSA-3050-1C2**

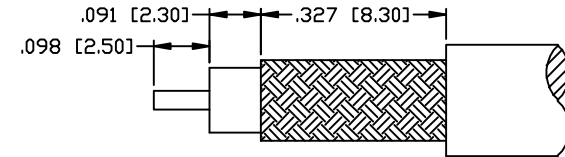
| REV | DESCRIPTION         | DWN | DATE     | APPROVED |
|-----|---------------------|-----|----------|----------|
| -   | ENGINEERING RELEASE | CZS | 03/28/11 | JDMc     |
|     |                     |     |          |          |
|     |                     |     |          |          |



PIN TO BE SOLDERED



RECOMMENDED CRIMP DIE: 213'



RECOMMENDED STRIPPING DIMENSIONS

**SPECIFICATIONS:**

IMPEDANCE: 50 Ohms  
 FREQUENCY RANGE: 0-12.4 GHz  
 INSERTION LOSS(dB):  $0.03 \times \sqrt{f(\text{GHz})}$   
 VSWR: 1.3 MAX.  
 WORKING VOLTAGE: 500 V rms Max. @ Sea Level  
 INSULATION RESISTANCE: 5k M Ohms min.  
 TEMPERATURE RANGE: -65°C TO 165°C  
 FOR TIMES LMR-200, ALPHA 9848 & MSI-22

|    |             |     |        |                 |           |      |
|----|-------------|-----|--------|-----------------|-----------|------|
| 1  | BODY        | 1   | BRASS  | GOLD, $3\mu$ "  | 000713    |      |
| 2  | INSULATOR   | 1   | PTFE   | ---             |           |      |
| 3  | CONTACT     | 1   | Be.Cu. | GOLD, $50\mu$ " |           |      |
| 4  | FERRULE     | 1   | BRASS  | GOLD, $3\mu$ "  |           |      |
| 5  |             |     |        |                 |           |      |
| 6  |             |     |        |                 |           |      |
| 7  |             |     |        |                 |           |      |
| 8  |             |     |        |                 |           |      |
| 9  |             |     |        |                 |           |      |
| 10 |             |     |        |                 |           |      |
| 11 |             |     |        |                 |           |      |
| 12 |             |     |        |                 |           |      |
| 13 |             |     |        |                 |           |      |
| 14 |             |     |        |                 |           |      |
| #  | DESCRIPTION | QTY | MATRL  | FINISH          | APPROVALS | DATE |

DRAWN  
C. ZUNIGA  
CHECKED  
ORJ DRAWN  
C. ZUNIGA  
03/28/11  
03/28/11

UNLESS OTHERWISE SPECIFIED:  
 1. REMOVE ALL BURRS  
 2. BREAK ALL CORNERS & EDGES .005 R. MAX.  
 3. CHAMFER 1ST & LAST THREADS 45°  
 4. SURFACE ROUGHNESS 63 FINISH MIL-STD-10  
 5. DIAMETERS ON COMMON CENTERS TO BE CONCENTRIC WITHIN .002 T.I.R.  
 6. ALL DIMENSIONS ARE AFTER PLATING.

DIMENSIONS ARE IN INCHES AND [MILLIMETERS]  
 UNLESS OTHERWISE NOTED TOLERANCES ARE:  
 DECIMALS .XXX±.003 [.08]  
 .XX±.005 [.13]  
 DIAMETER .XXX±.001 [.03]  
 .XX±.003 [.08]

**RF connectors**  
 DIVISION OF RF INDUSTRIES, LTD.  
 7610 MIRAMAR RD  
 SAN DIEGO, CA 92126  
 (858) 549-6340  
 (858) 549-6345 FAX

**SMA JACK CRIMP**

|            |                   |                         |              |
|------------|-------------------|-------------------------|--------------|
| SIZE<br>A  | CABLE GROUP<br>C2 | DWG NO.<br>RSA-3050-1C2 | REV<br>-     |
| SCALE: NTS |                   | CAD FILE OUTLINE        | SHEET 1 OF 1 |