



The Connor-Winfield Corporation
2111 Comprehensive Drive
Aurora, Illinois 60505
Phone: (630) 851-4722
Fax: (630) 851-5040
<http://www.conwin.com>

PRODUCT/ PROCESS CHANGE NOTICE / EOL NOTICE

Number: 2203-2

Date: 07/05/22

Effective Date: This EOL is effective starting 7/15/22

Change Category: End-of-Life Notification

Products Affected: DOC-series and OX914-series part numbers:

DOC02xx-xxx.xM
DOC05xx-xxx.xM
DOC1xxx-xxx.xM
DOC1xxx-AT-xxx.xM
DOCExxxx-xxx.xM
OX914xxx-xxx.xM

Reason for EOL: Due to the end-of-life status of the AKM analog compensation IC that was used in this design.

Last Time Buy Status: We are only able to offer very limited remaining inventory, if available, as a last time buy. Please contact Connor-Winfield Sales department for this information.

Recommended Replacement Products:

The drop-in replacements for these EOL part numbers will be:

- 1) DOCAT-series - see specific list below for which part numbers cross to this
- 2) DOXSC-series - see specific list below for which part numbers cross to this

Descriptions of recommended replacement designs:

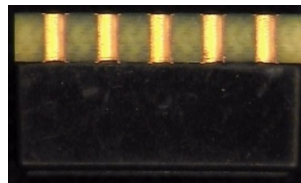
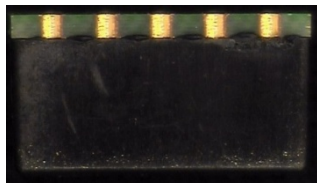
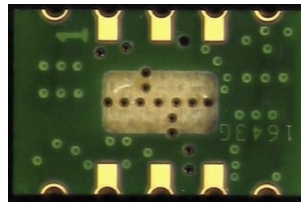
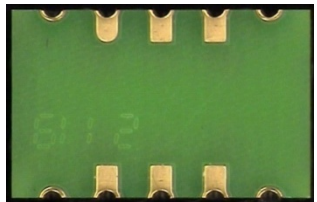
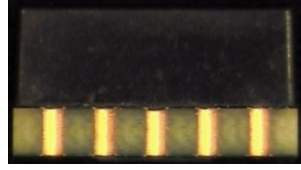
1) The DOCAT-series is an existing OCXO/VCOXO series and is updated to use the newer AKM compensation IC replacement. This design will continue to use AT-cut crystals.

2) The DOXSC-series is essentially a smaller footprint OCXO containing an SC-cut crystal mounted on a carrier board to maintain the same 9x14mm form factor and pin footprint. For part numbers changing to the DOXSC-series, the crystal will be changing from an AT-cut to an SC-cut.

The DOCAT-series and DOXSC-series parts have a thinner PCB with no "air-gap" (see bottom view below). The landing pattern and X-Y dimensions remain the same.

DOCAT-series
DOXSC-series

DOC-series (EOL part):



The overall height dimension of the replacement design increases from 7.8mm to 8.51mm max.



DOXSC-series
DOCAT-series

DOC-series

Part Number: Product model numbers will change to either the DOCAT-series or the DOXSC-series, per the specific listing below.

CHANGEOVER PROCESS:

Test **SAMPLES** Available: Yes No

Test **DATA** Available: Yes No

Connor-Winfield Contact Person: Ken Olp, Engineering Mgr 630-851-4722 Ext 5511,
kolp@conwin.com

CUSTOMER RESPONSE

This PCN requires customer notification only. Please use this form if necessary to respond and direct to the attention of the contact person at Connor-Winfield Corporation.

If Unacceptable, Explain:

Customer Contact:
Telephone:
Email

Model list changing to DOCAT-series part numbers:

Original Part Number	Replacement Part Number
DOC020F-012.8M	DOCAT020F-012.8M
DOC020F-019.44M	DOCAT020F-019.44M
DOC020V-010.0M	DOCAT020V-010.0M
DOC020V-012.8M	DOCAT020V-012.8M
DOC020V-019.44M	DOCAT020V-019.44M
DOC020V-020.0M	DOCAT020V-020.0M
DOC020V-025.0M	DOCAT020V-025.0M
DOC020V-038.88M	DOCAT020V-038.88M
DOC022F-012.8M	DOCAT022F-012.8M
DOC022V-010.0M	DOCAT022V-010.0M
DOC022V-019.44M	DOCAT022V-019.44M
DOC050F-012.8M	DOCAT050F-012.8M
DOC050F-019.44M	DOCAT050F-019.44M
DOC050V-010.0M	DOCAT050V-010.0M
DOC050V-012.8M	DOCAT050V-012.8M
DOC050V-019.2M	DOCAT050V-019.2M

DOC050V-019.44M	DOCAT050V-019.44M
DOC050V-020.0M	DOCAT050V-020.0M
DOC050V-025.0M	DOCAT050V-025.0M
DOC051F-012.8M	DOCAT051F-012.8M
DOC051V-020.0M	DOCAT051V-020.0M
DOC052F-012.8M	DOCAT052F-012.8M
DOC052F-019.2M	DOCAT052F-019.2M
DOC052F-019.44M	DOCAT052F-019.44M
DOC052V-010.0M	DOCAT052V-010.0M
DOC052V-012.8M	DOCAT052V-012.8M
DOC052V-019.2M	DOCAT052V-019.2M
DOC052V-019.44M	DOCAT052V-019.44M
DOC052V-020.0M	DOCAT052V-020.0M
DOC052V-025.0M	DOCAT052V-025.0M
DOC052V-040.0M	DOCAT052V-040.0M
DOC100F-012.8M	DOCAT100F-012.8M
DOC100F-019.44M	DOCAT100F-019.44M
DOC100V-010.0M	DOCAT100V-010.0M
DOC100V-012.8M	DOCAT100V-012.8M
DOC100V-019.44M	DOCAT100V-019.44M
DOC100V-020.0M	DOCAT100V-020.0M
DOC100V-080.0M	DOCAT100V-080.0M
DOC102F-012.8M	DOCAT102F-012.8M
DOC102F-019.44M	DOCAT102F-019.44M
DOC102F-024.576M	DOCAT102F-024.576M
DOC102F-049.152M	DOCAT102F-049.152M
DOC102F-098.304M	DOCAT102F-098.304M
DOC102V-010.0M	DOCAT102V-010.0M
DOC102V-012.8M	DOCAT102V-012.8M
DOC102V-019.44M	DOCAT102V-019.44M
DOC102V-020.0M	DOCAT102V-020.0M
DOC102V-AT-010.0M	DOCAT102V-AT-010.0M
DOC144S-017.0M	DOCAT144S-017.0M

DOCE020V-024.576M	DOCAT020V-024.576M
DOCE022V-024.576M	DOCAT022V-024.576M
DOCE052V-019.2M	DOCAT052V-019.2M
OX9140S3-012.8M	DOCAT100F-012.8M
OX9140S3-019.44M	DOCAT100F-019.44M
OX9143S3-012.8M	DOCAT102F-012.8M
OX9143S3-019.44M	DOCAT102F-019.44M

Model list changing to DOXSC-series part numbers:

Original Part Number	Replacement Part Number
DOC020F-010.0M	DOXSC020F-010.0M
DOC020F-020.0M	DOXSC020F-020.0M
DOC020F-025.0M	DOXSC020F-025.0M
DOC022F-010.0M	DOXSC022F-010.0M
DOC022F-020.0M	DOXSC022F-020.0M
DOC050F-010.0M	DOXSC050F-010.0M
DOC050F-020.0M	DOXSC050F-020.0M
DOC052F-010.0M	DOXSC052F-010.0M
DOC052F-020.0M	DOXSC052F-020.0M
DOC052F-025.0M	DOXSC052F-025.0M
DOC100F-010.0M	DOXSC100F-010.0M
DOC100F-020.0M	DOXSC100F-020.0M
DOC102F-010.0M	DOXSC102F-010.0M
DOC102F-020.0M	DOXSC102F-020.0M
DOC102F-040.0M	DOXSC102F-040.0M
OX9140S3-010.0M	DOXSC100F-010.0M
OX9140S3-020.0M	DOXSC100F-020.0M
OX9141C-010.0M	DOXSC100F-010.0M

OX9141C-020.0M	DOXSC100F-020.0M
OX9141S3-020.0M	DOXSC100F-020.0M
OX9143S3-010.0M	DOXSC102F-010.0M
OX9143S3-020.0M	DOXSC102F-020.0M