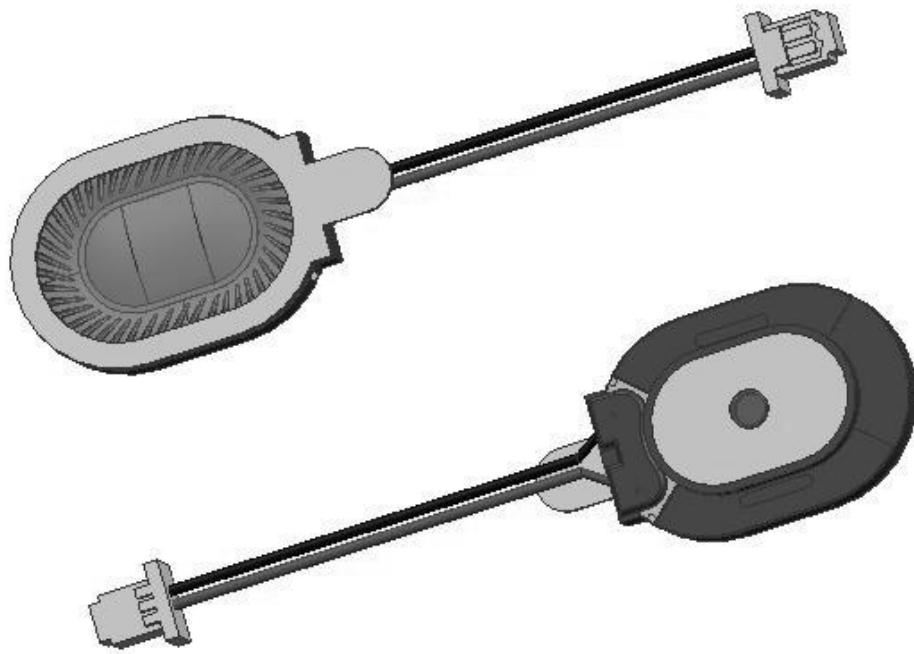


SPECIFICATION

BMS2014P-11C-08H3.2RW070 LF





APPROVAL SHEET FOR SMARTPHONE SPEAKER

TOTAL PAGE	13	www.bestargroups.com	RoHS
------------	----	----------------------	------

Customer		Model Name	BMS2014P-11C-08H3.2RW070 LF
Customer P/N		Product No.	*****
Date	03 Agu. 2015	Issue No.	BS/TES01.****A
Page	02 of 13	Issue Date	2015/08/03

Table of Contents:

- 1.Test Climatic Condition
- 2.Description
- 3.Characteristics
- 4.Test Setup
- 5.Drawing
- 6.Reliability Test
- 7.Packing
- 8.History Change Record

Drawn by	Checked by	Approved by	Customer approved

BESTAR Holding CO.,LTD

No.199 HuangHe West Road.New district,ChangZhou,JiangSu Province,P.R.China

Tel: +86 519 88222567

Fax: +86 519 88222551

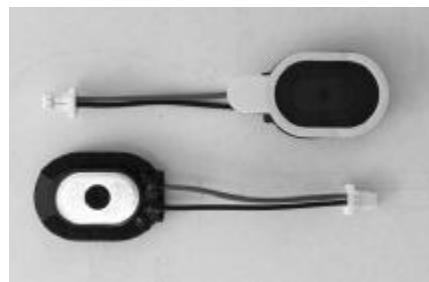
E-mail:wu@be-star.com

http://www.bestargroups.com

BMS2014P-11C-08H3.2RW070 LF

1. Test Climatic Condition

- 1.1 Ambient Temperature :15°C~35°C, Preferably at 20°C
- 1.2 Relative Humidity:25% to 75%
- 1.3 Air Pressure:86kPa~106kPa



No.	Item	Specification
1.	Dimension	20x14 x3.2(mm)
2.	AC Impedance	8 Ω ±15%(at 2KHz/1Vrms)
3.	Rated Power	0.7W(2.37Vrms)
4.	Maximum Power	1.0W(2.83Vrms)
5.	Resonance Frequency	800Hz ± 20% at 1V
6.	Frequency Response	Fo~20KHz
7.	S.P.L	87±3dB at 0.8K、1K、1.2K、1.5KHz average(0.1m/0.1W)
8.	THD	≤10% at 1KHz(0.1m/0.7W) ≤5% at 1KHz(0.1m/0.1W)
9.	Buzzes & Rattles	Must be normal at sine wave 2.37Vrms(in free air) from200~3400Hz
10.	Polarity	Positive voltage to (+),Diaphragm moves forward
11.	Operating Temperature	-20~+ 70°C
12.	Storage Temperature	-20~+ 70°C
13.	Weight	~1.7g±0.3g

2. Description

- 2.1 Acoustic component Performance Specification
- 2.2 The present document specifies performance requirements for the acoustic characteristics of speaker

3. Characteristics

- 3.1 Electrical and Mechanical Characteristics

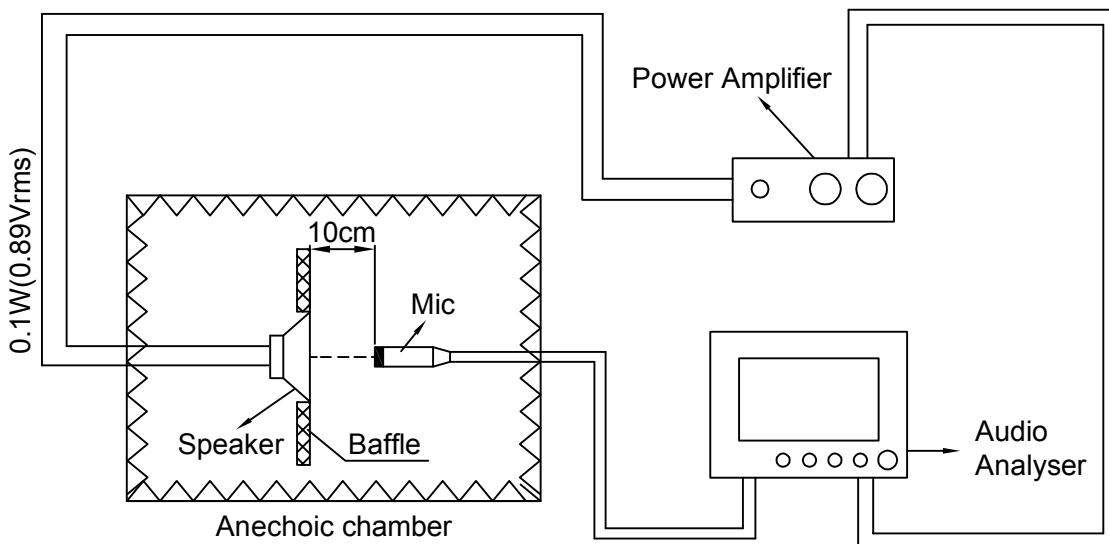
				Date:	2015/08/03	BMS2014P-11C-08H3.2RW070 LF
				Drawn by:	杨紫群	
A	2015/08/03	杨紫群		Checked by:	王凯	Speaker
Rev.	Date	Drawn	Note	Approved by:	汪珍珍	
BESTAR Holding CO.,LTD						DRG NO: BS/TES01.****A
www.bestargroups.com wu@be-star.com						Page:03 of 13

This print and information there in are proprietary to Bestar Holding Co., Ltd. and shall not be used in whole or in part without its written content

BMS2014P-11C-08H3.2RW070 LF

4. Test Setup

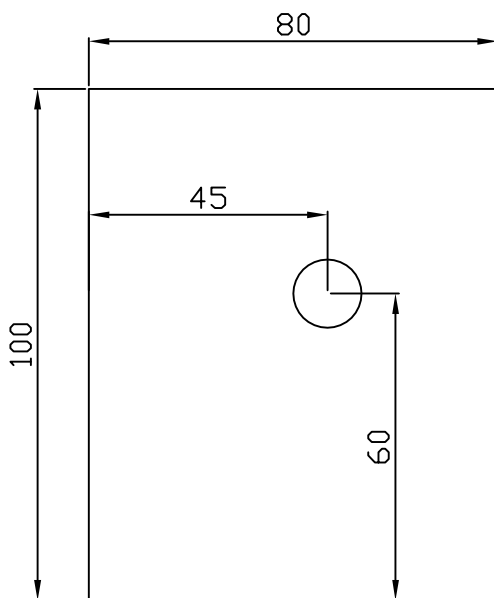
4.1 Speaker Measurement Circuit



4.2 Baffle Drawing

unit:cm

tolerance:±2



4.3 Test Method

The speaker shall be mounted in a baffle of the dimensions 80X100cm show figure 4.2,

The measuring free-field microphone shall be placed 10cm from DUT, on axis.

The test voltage is 0.1W and swept sine-wave range is 100Hz~20KHz with a R80 of test sequence

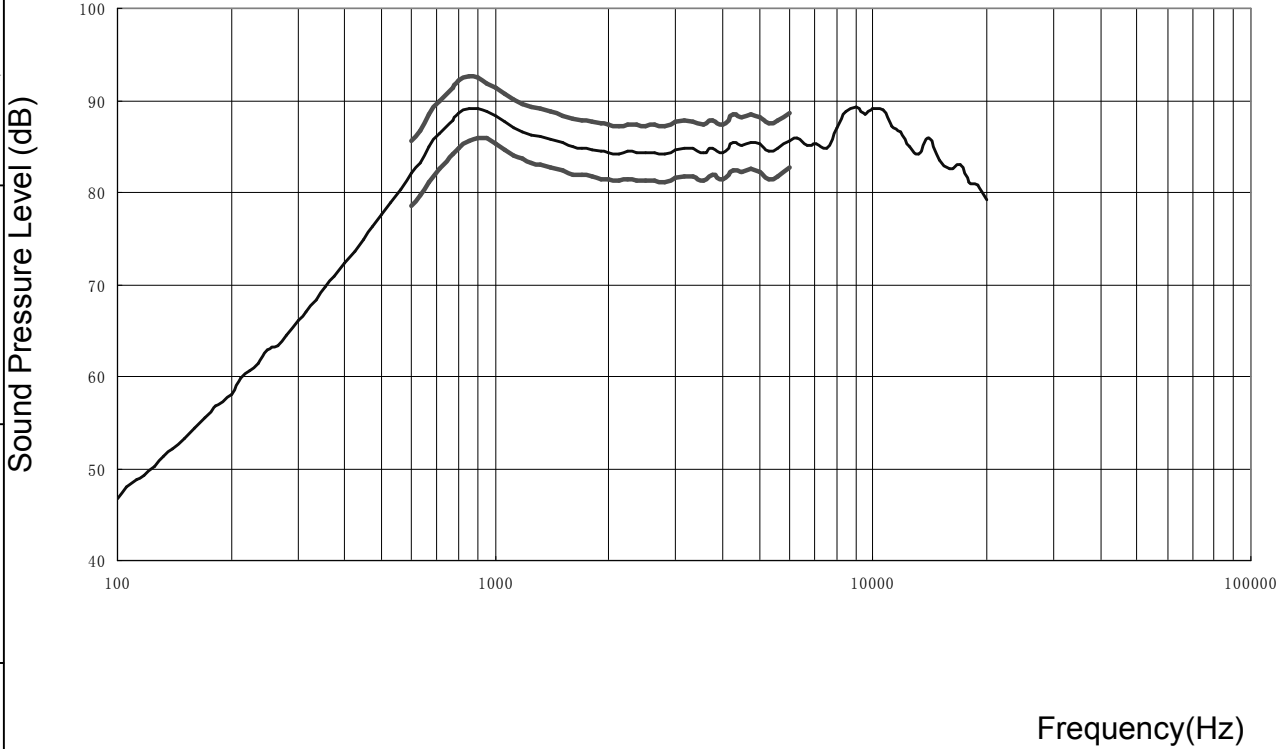
This print and information there in are proprietary to Bestar Holding Co., Ltd. and shall not be used in whole or in part without its written content

				Date:	2015/08/03	BMS2014P-11C-08H3.2RW070 LF	
				Drawn by:	杨紫群		
A	2015/08/03	杨紫群		Checked by:	王凯	Speaker	
Rev.	Date	Drawn	Note	Approved by:	汪珍珍		
BESTAR Holding CO.,LTD						DRG NO: BS/TES01.****A	Page:04 of 13
www.bestargroups.com wu@be-star.com							

BMS2014P-11C-08H3.2RW070 LF

4.4 Frequency Response Curve (only for reference)

A: Frequency Response Magn 0 dB re 20.00 μ Pa/V 1/12Oct



4.4.1 Sensitivity

SPL is expressed in dB rel 20 μ Pa, computed according to IEC 268-5.

Measurement set up according chapter 4.1 and parameters according chapter 4.4.

This test is performed for 100% of products in the production line.

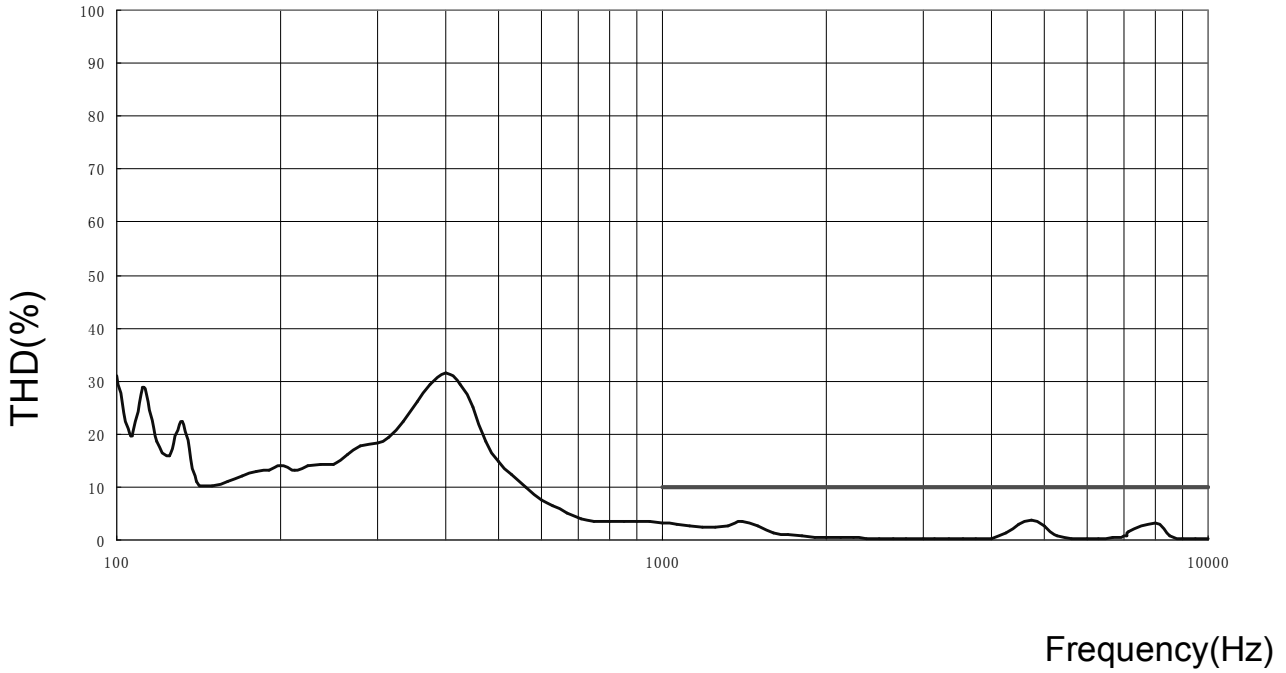
This print and information there in are proprietary to Bestar Holding Co., Ltd. and shall not be used in whole or in part without its written content

				Date:	2015/08/03	BMS2014P-11C-08H3.2RW070 LF	
				Drawn by:	杨紫群		
A	2015/08/03	杨紫群		Checked by:	王凯	Speaker	
Rev.	Date	Drawn	Note	Approved by:	汪珍珍		
BESTAR Holding CO.,LTD						DRG NO: BS/TES01.****A	Page:05 of 13
www.bestargroups.com wu@be-star.com							

BMS2014P-11C-08H3.2RW070 LF

4.5 Total Harmonic Distortion (only for reference)

A: Frequency Response Magn 0 dB re 20.00 μ Pa/V 1/12Oct



4.5.1 THD

THD is measured according test set up in chapter 4.1 and parameters according chapter 4.5

This test is performed for 100% of products in production line

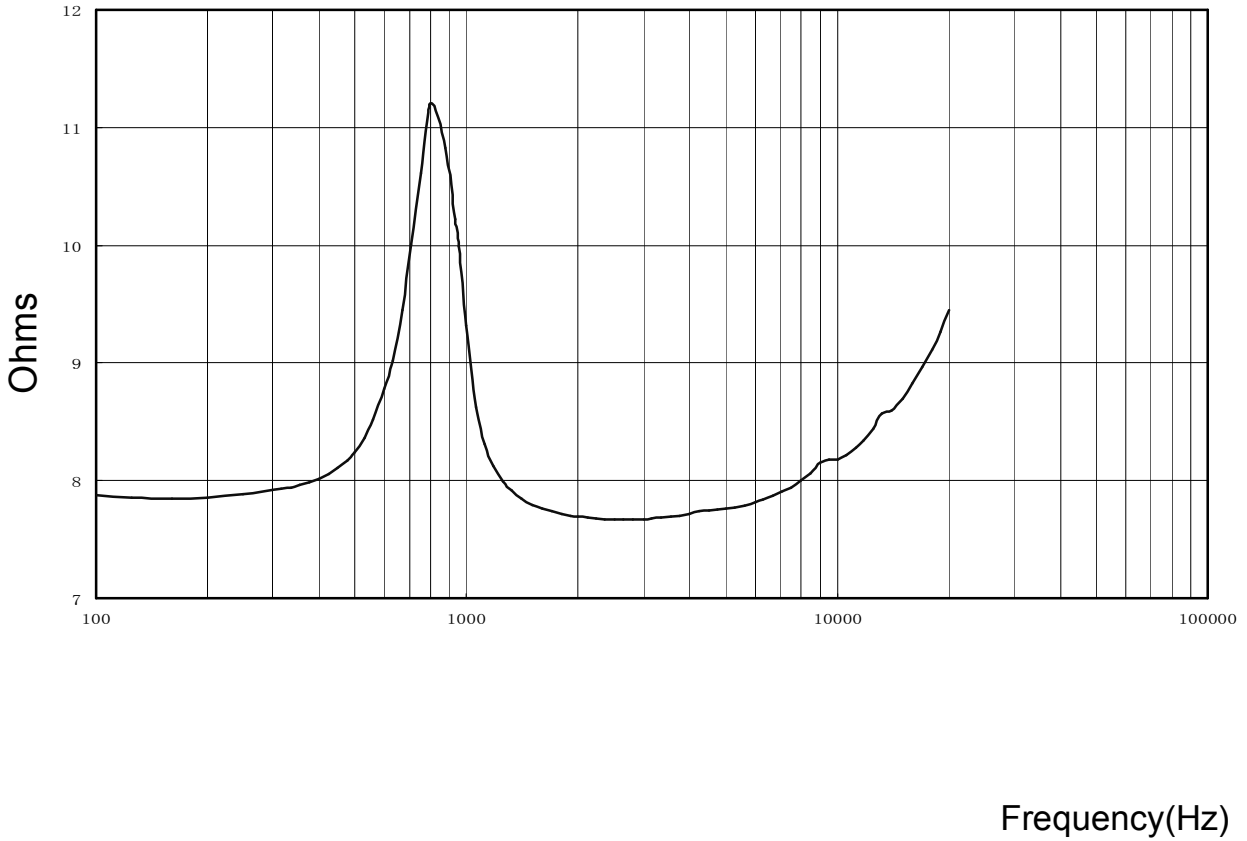
This print and information there in are proprietary to Bestar Holding Co., Ltd. and shall not be used in whole or in part without its written content

				Date:	2015/08/03	BMS2014P-11C-08H3.2RW070 LF	
				Drawn by:	杨紫群		
A	2015/08/03	杨紫群		Checked by:	王凯	Speaker	
Rev.	Date	Drawn	Note	Approved by:	汪珍珍		
BESTAR Holding CO.,LTD						DRG NO: BS/TES01.****A	Page:06 of 13
www.bestargroups.com wu@be-star.com							

BMS2014P-11C-08H3.2RW070 LF

4.6 F0 Curve (only for reference)

A: Frequency Response Magn 0 dB re 20.00 μ Pa/V 1/12Oct



4.6.1 Resonance Frequency

Resonance frequency is measured according test set up in chapter 4.1 and parameters according chapter 4.6

This test is performed for 100% of products in the production line

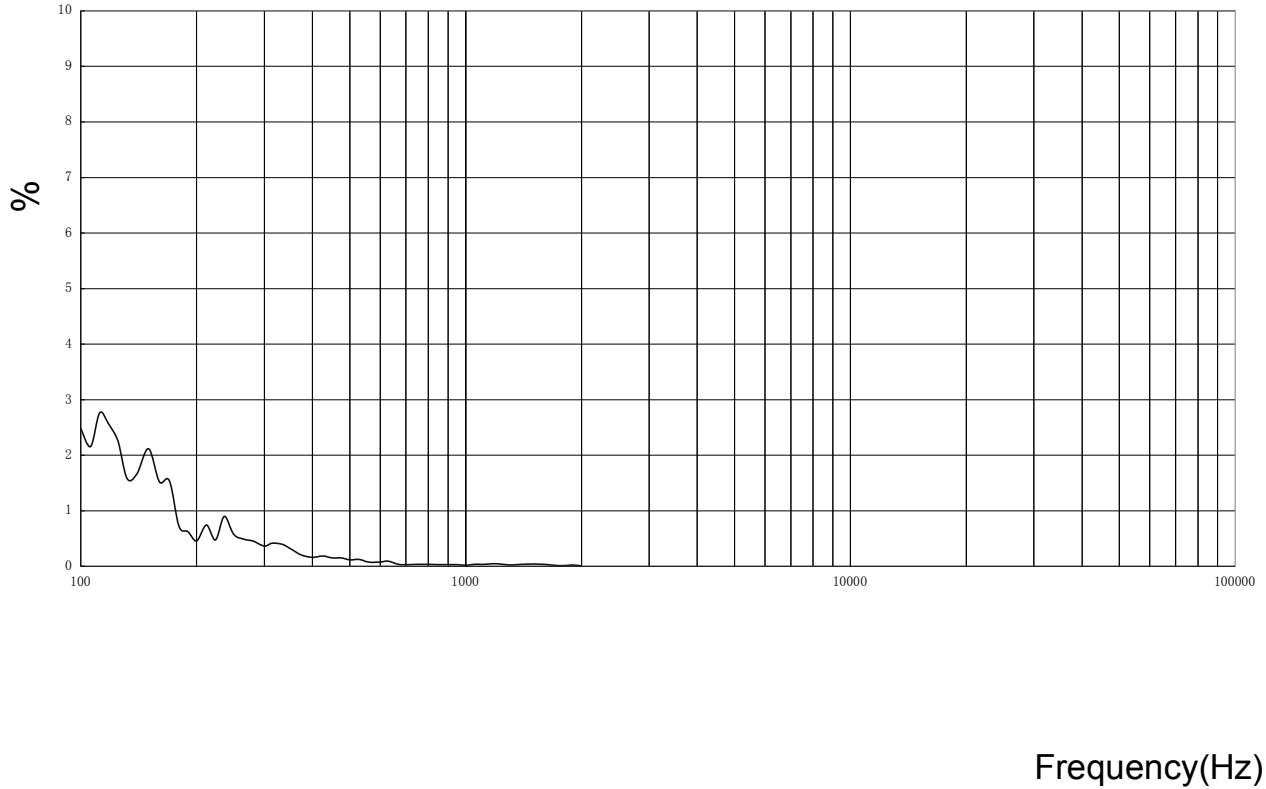
This print and information there in are proprietary to Bestar Holding Co., Ltd. and shall not be used in whole or in part without its written content

				Date:	2015/08/03	BMS2014P-11C-08H3.2RW070 LF	
				Drawn by:	杨紫群		
A	2015/08/03	杨紫群		Checked by:	王凯	Speaker	
Rev.	Date	Drawn	Note	Approved by:	汪珍珍		
BESTAR Holding CO.,LTD						DRG NO: BS/TES01.***A	Page:07 of 13
www.bestargroups.com wu@be-star.com							

BMS2014P-11C-08H3.2RW070 LF

4.7 R&B Curve (only for reference)

A: Frequency Response Magn 0 dB re 20.00 μ Pa/V 1/12Oct



4.7.1 R&B

R&B is measured according test set up in chapter 4.1 and parameters according chapter 4.7

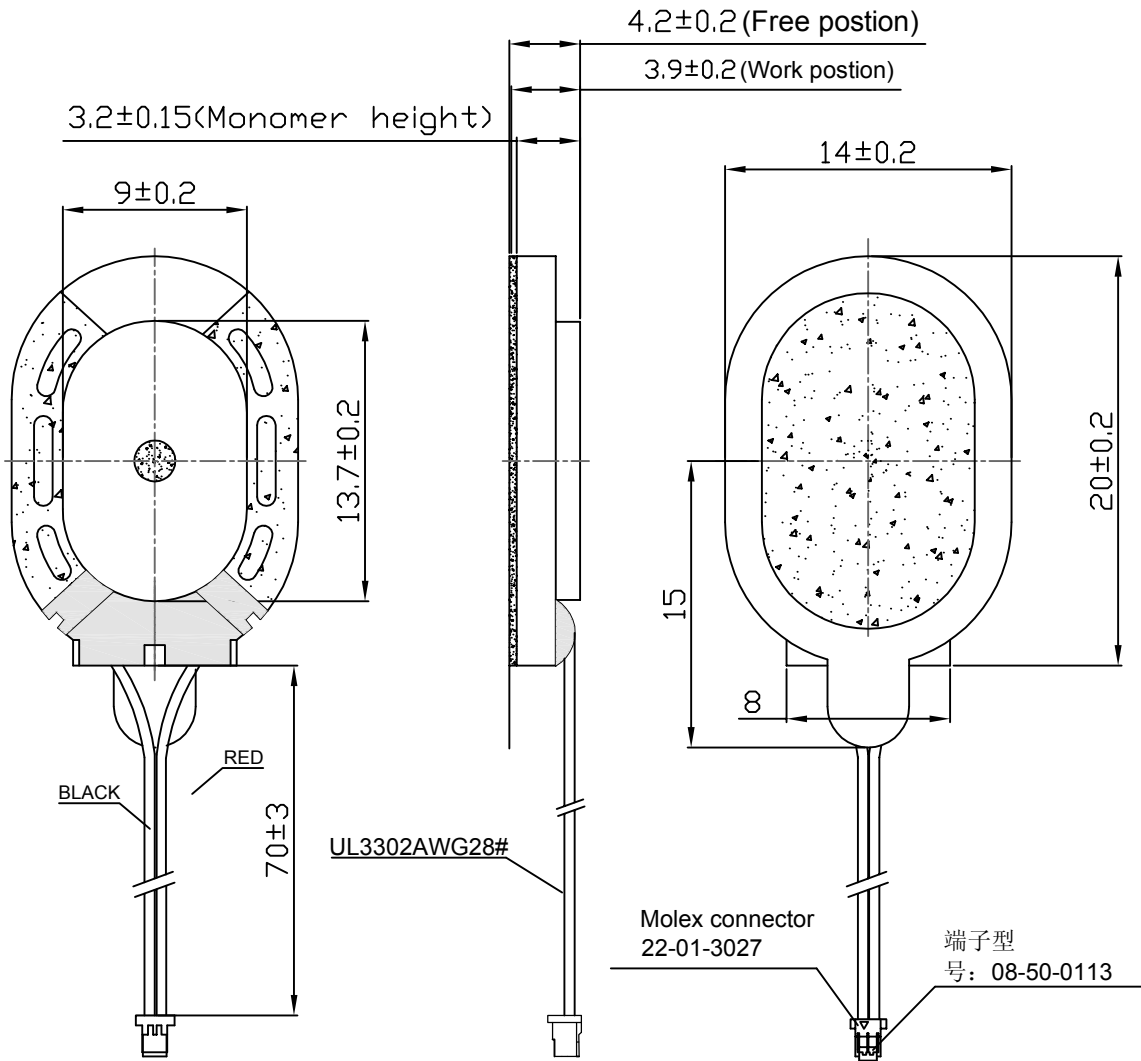
This test is performed for 100% of products in production line

This print and information there in are proprietary to Bestar Holding Co., Ltd. and shall not be used in whole or in part without its written content

				Date:	2015/08/03	BMS2014P-11C-08H3.2RW070 LF	
				Drawn by:	杨紫群		
A	2015/08/03	杨紫群		Checked by:	王凯	Speaker	
Rev.	Date	Drawn	Note	Approved by:	汪珍珍		
BESTAR Holding CO.,LTD						DRG NO: BS/TES01.****A	Page:08 of 13
www.bestargroups.com wu@be-star.com							

BMS2014P-11C-08H3.2RW070 LF

5. Drawing

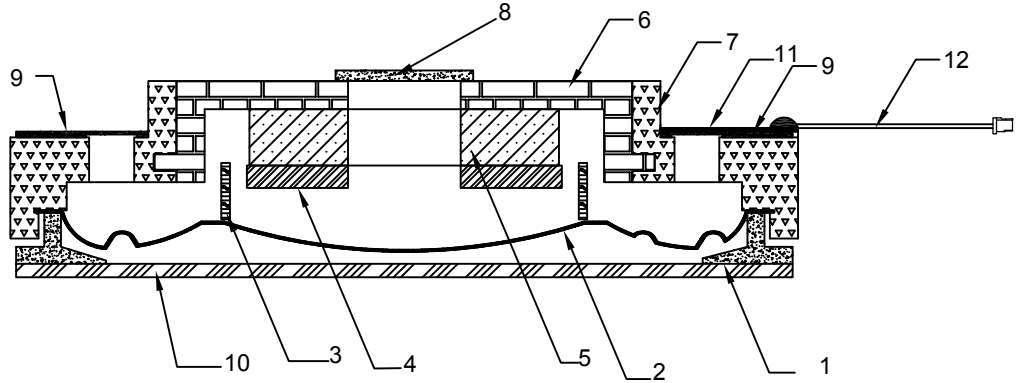


unit:mm
tolerance: ± 0.2

				Date:	2015/08/03	BMS2014P-11C-08H3.2RW070 LF	
				Drawn by:	杨紫群		
A	2015/08/03	杨紫群		Checked by:	王凯	Speaker	
Rev.	Date	Drawn	Note	Approved by:	汪珍珍		
BESTAR Holding CO.,LTD						DRG NO: BS/TES01.****A	Page:09 of 13
www.bestargroups.com wu@be-star.com							

This print and information there in are proprietary to Bestar Holding Co., Ltd. and shall not be used in whole or in part without its written content

BMS2014P-11C-08H3.2RW070 LF



No	Description of the part	Material
1	Front Cover	LCP
2	Diaphragm	PEN
3	Coil	0.055
4	Plate	SPCC
5	Magnet	Nd-Fe-B
6	Under Yoke	SPCC
7	Frame	PBT+30%GF
8	Net	PET
9	Net	nylon BLK
10	Net	nylon BLK
11	PCB	S1155
12	Cable	UL3302

Date:	2015/08/03
Drawn by:	杨紫群
Checked by:	王凯
Approved by:	汪珍珍

BMS2014P-11C-08H3.3RP LF

Speaker

BESTAR Holding CO.,LTD

www.bestargroups.com wu@be-star.com

DRG NO: BS/TES01.****A

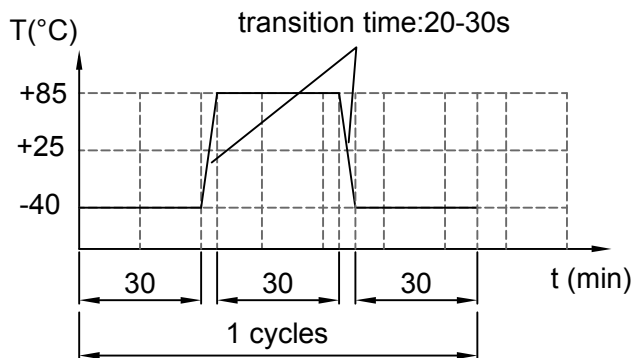
Page:10 of 13

This print and information there in are proprietary to Bestar Holding Co., Ltd. and shall not be used in whole or in part without its written content

BMS2014P-11C-08H3.2RW070 LF

6. Reliability Test

6.1 Load Test	Power (Nom)	0.7W(in Pink noise)
	Duration	96hrs
6.2 High Temperature Test	Temperature	+70±3°C
	Duration	96hrs
6.3 Low Temperature Test	Temperature	-20±3°C
	Duration	96hrs
6.4 Damp Heat	Temperature	40±3°C
	Relative Humidity	90%-95%RH
	Duration	96hrs
6.5 Temperature Cycle Test	Cycles	10



6.6 Drop Test	Height	1.0m
	Drop face	thick board (20mm)
	Times	10 (three times in each durement)

Notice:

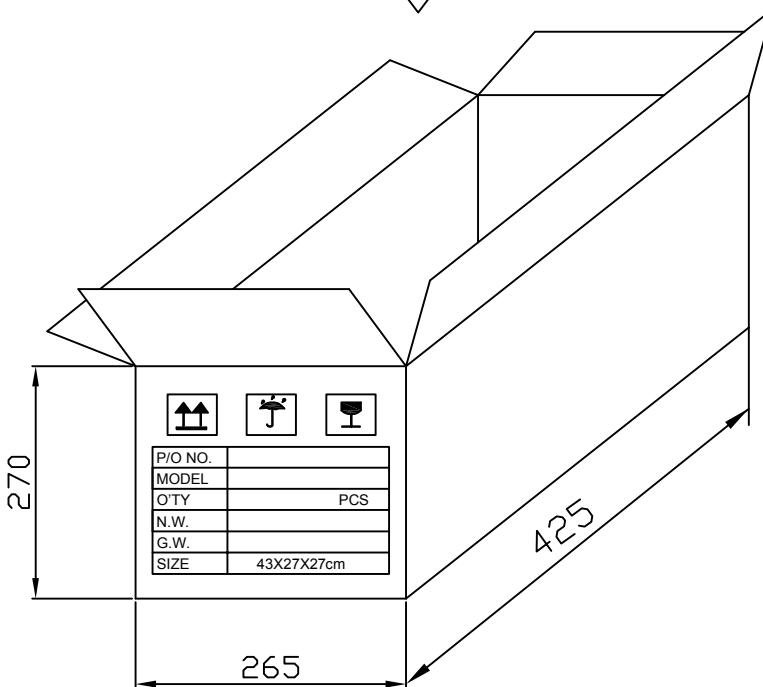
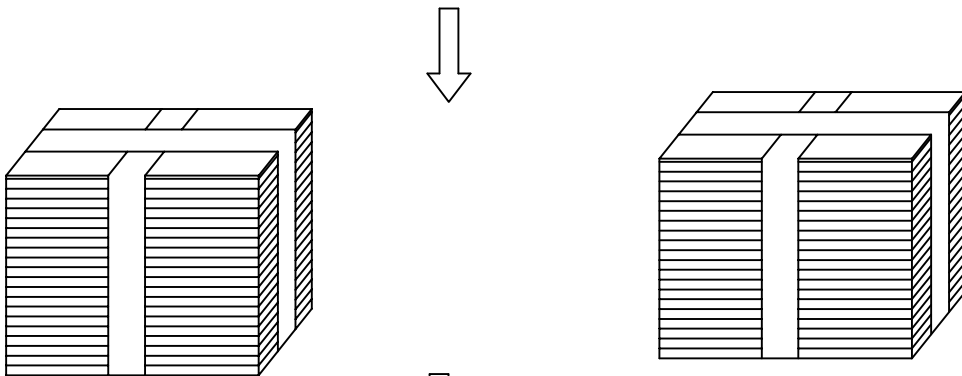
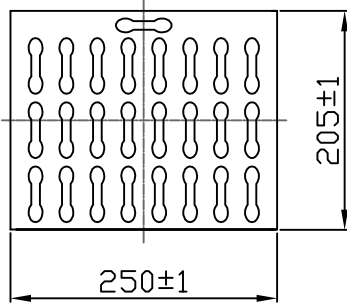
- 1.Immediately after reliability test,the samples shall be stored under climatic conditions such as normally exist in ordinary rooms or laboratories.Unless otherwise noted,the recovery period shall be 4hrs at least before performance testing.
2. After reliability test ,all samples must be meet the requirements specified
- 3.Sensitivity difference at F0~5.0KHz shall be within ±3dB from initial value after test.

This print and information there in are proprietary to Bestar Holding Co., Ltd. and shall not be used in whole or in part without its written content

				Date:	2015/08/03	BMS2014P-11C-08H3.2RW070 LF	
				Drawn by:	杨紫群		
A	2015/08/03	杨紫群		Checked by:	王凯	Speaker	
Rev.	Date	Drawn	Note	Approved by:	汪珍珍		
BESTAR Holding CO.,LTD						DRG NO: BS/TES01.****A	Page:11 of 13
www.bestargroups.com wu@be-star.com							

BMS2014P-11C-08H3.2RW070 LF

7. Packing



Remark:
 25 pcs per tray
 20 trays for unit
 500 pcs per carton
 2 carton per box
 Total 1000pcs per box
 Size: 43 × 27 × 27(cm)

This print and information there in are proprietary to Bestar Holding Co., Ltd. and shall not be used in whole or in part without its written content

				Date:	2015/08/03	BMS2014P-11C-08H3.2RW070 LF
				Drawn by:	杨紫群	
A	2015/08/03	杨紫群		Checked by:	王凯	Speaker
Rev.	Date	Drawn	Note	Approved by:	汪珍珍	
BESTAR Holding CO.,LTD						DRG NO: BS/TES01.****A
www.bestargroups.com wu@be-star.com						Page:12 of 13

