

NOTES

1. MATERIAL
 - HOUSING LIQUID CRYSTAL POLYMER GLASS FILLED, UL94V-0(BEIGE)
 - ACTUATOR PPS GLASS FILLED, UL94V-0(BLACK) (t=0.15)
 - TERMINAL PHOSPHOR BRONZE (t=0.15)
 - FITTING NAIL PHOSPHOR BRONZE
2. PLATING
 - TERMINAL CONTACT AREA : SEPARATED GOLD PLATING (0.05 MICROMETER MINIMUM)
 - SOLDER TAIL AREA : SEPARATED GOLD PLATING
 - UNDERPLATE : NICKEL OVERALL (1.0 MICROMETER MINIMUM)
 - FITTING NAIL TIN PLATING (1.0 MICROMETER MIN.)
 - UNDER PLATING : NICKEL PLATING (1.0 MICROMETER MIN.)
3. IN THE PACKAGE, ACTUATOR OF PART 104060-**10 SHOULD BE CLOSED.
4. FITTING NAIL FOR PREVENTION OF PEELING OF P.C.B. PATTERN.
5. R0.3 MUST NOT BE OVERLAPPED TO PATTERN OF FPC/FFC.
6. N: CIRCUIT.
7. ELV AND RoHS COMPLIANT
8. TAILS AND NAILS COPLANALITY TO BE 0.1mm MAX.

10.5	13.1	9.5	14.7	104060-2017	20
D	C	B	A	ORDER No.	CIRCUIT

REVISED EC NO: KOR2013-0042 DRWN:HJJEONG 2013/05/30 CHKD: APPR:YSKIM02 2013/05/30	QUALITY SYMBOLS	GENERAL TOLERANCES (UNLESS SPECIFIED)	DIMENSION STYLE	SCALE	DESIGN UNITS	THIRD ANGLE PROJECTION																			
	$\nabla=0$ $\text{C}=0$	<table border="1"> <tr> <th></th> <th>mm</th> <th>INCH</th> </tr> <tr> <td>4 PLACES</td> <td>± ---</td> <td>± ---</td> </tr> <tr> <td>3 PLACES</td> <td>± ---</td> <td>± ---</td> </tr> <tr> <td>2 PLACES</td> <td>± ---</td> <td>± ---</td> </tr> <tr> <td>1 PLACE</td> <td>± 0.3</td> <td>± ---</td> </tr> </table>		mm	INCH	4 PLACES	± ---	± ---	3 PLACES	± ---	± ---	2 PLACES	± ---	± ---	1 PLACE	± 0.3	± ---	MM ONLY	8:1	METRIC					
		mm	INCH																						
	4 PLACES	± ---	± ---																						
3 PLACES	± ---	± ---																							
2 PLACES	± ---	± ---																							
1 PLACE	± 0.3	± ---																							
	<table border="1"> <tr> <th>mm</th> <th>INCH</th> </tr> <tr> <td>± 0.3</td> <td>± 0.012</td> </tr> </table>	mm	INCH	± 0.3	± 0.012	<table border="1"> <tr> <th>DRAWN BY</th> <th>DATE</th> <th>TITLE</th> </tr> <tr> <td>YR.KIM</td> <td>2009/06/26</td> <td rowspan="4">0.5 FFC E/O DUAL CONTACT HOUSING ASS'Y</td> </tr> <tr> <th>CHECKED BY</th> <th>DATE</th> </tr> <tr> <td>KS.KIM</td> <td>2009/06/26</td> </tr> <tr> <th>APPROVED BY</th> <th>DATE</th> </tr> <tr> <td>YS00.KIM</td> <td>2009/06/26</td> <td></td> </tr> </table>	DRAWN BY	DATE	TITLE	YR.KIM	2009/06/26	0.5 FFC E/O DUAL CONTACT HOUSING ASS'Y	CHECKED BY	DATE	KS.KIM	2009/06/26	APPROVED BY	DATE	YS00.KIM	2009/06/26		MOLEX INCORPORATED			
mm	INCH																								
± 0.3	± 0.012																								
DRAWN BY	DATE	TITLE																							
YR.KIM	2009/06/26	0.5 FFC E/O DUAL CONTACT HOUSING ASS'Y																							
CHECKED BY	DATE																								
KS.KIM	2009/06/26																								
APPROVED BY	DATE																								
YS00.KIM	2009/06/26																								
	DRAFT WHERE APPLICABLE MUST REMAIN WITHIN DIMENSIONS	SEE TABLE	DOCUMENT NO.		SHEET NO.																				
			SD-104060-002		1 OF 3																				
			THIS DRAWING CONTAINS INFORMATION THAT IS PROPRIETARY TO MOLEX INCORPORATED AND SHOULD NOT BE USED WITHOUT WRITTEN PERMISSION																						

10 9 8 7 6 5 4 3 2 1

F

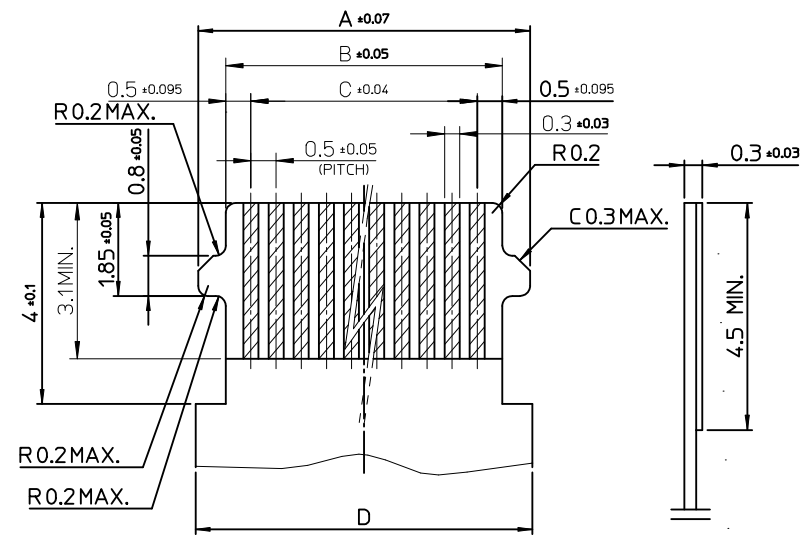
E

D

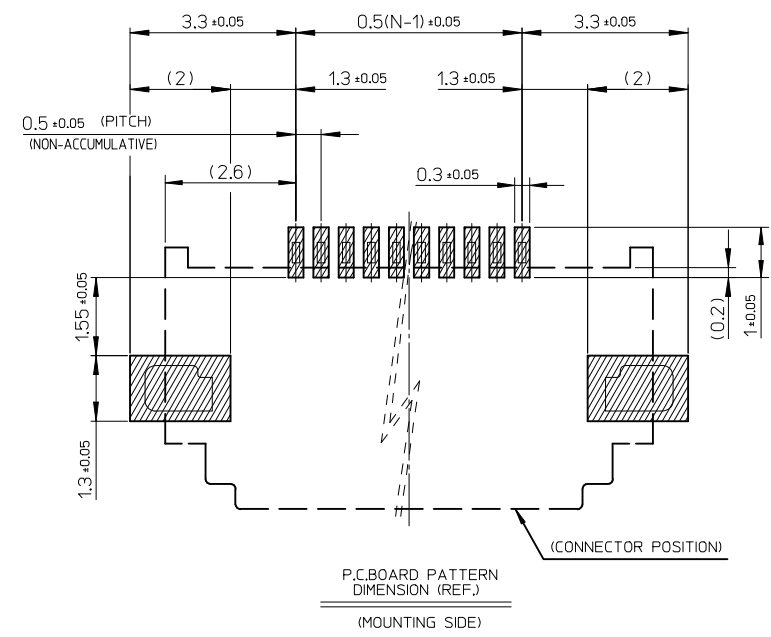
C

B

A



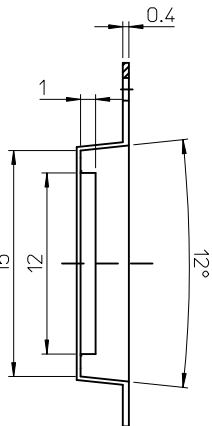
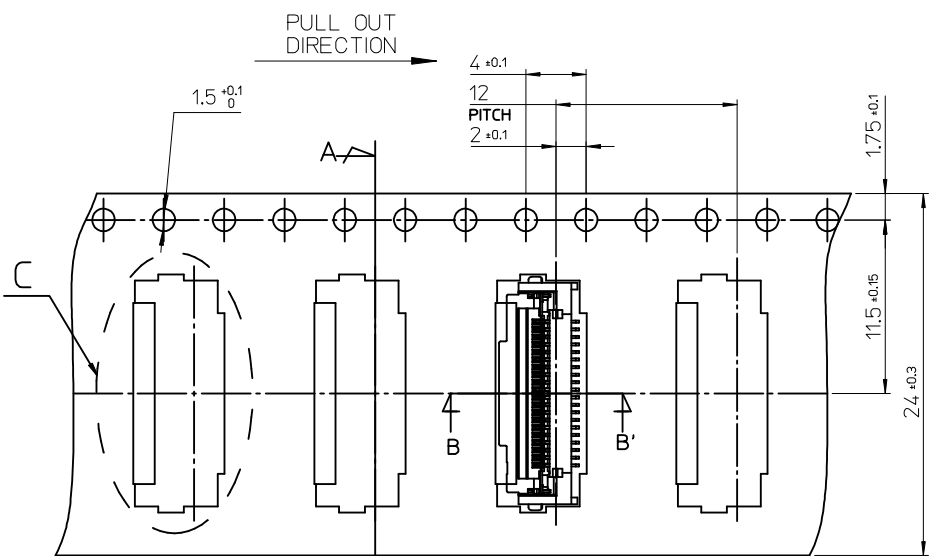
APPLICABLE FPC/FFC
RECOMMENDED DIMENSION



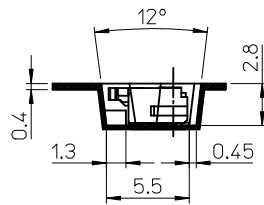
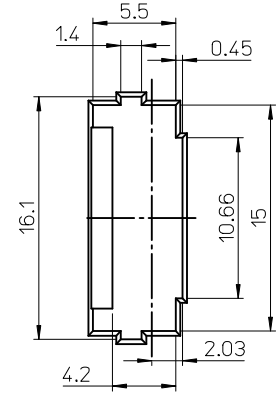
12.3	9.5	10.5	12.2	20
D	C	B	A	CIRCUIT

REVISED EC NO: KOR2013-0042 DRWN: HJEONG 2013/05/30 CHKD: APPR: YSK IM02 2013/05/30 REV	QUALITY SYMBOLS	GENERAL TOLERANCES (UNLESS SPECIFIED) <table border="1"> <tr> <td></td> <td>mm</td> <td>INCH</td> </tr> <tr> <td>4 PLACES</td> <td>± 0.1</td> <td>± 0.004</td> </tr> <tr> <td>3 PLACES</td> <td>± 0.15</td> <td>± 0.006</td> </tr> <tr> <td>2 PLACES</td> <td>± 0.2</td> <td>± 0.008</td> </tr> <tr> <td>1 PLACE</td> <td>± 0.3</td> <td>± 0.012</td> </tr> </table> ANGULAR ± 1° DRAFT WHERE APPLICABLE MUST REMAIN WITHIN DIMENSIONS		mm	INCH	4 PLACES	± 0.1	± 0.004	3 PLACES	± 0.15	± 0.006	2 PLACES	± 0.2	± 0.008	1 PLACE	± 0.3	± 0.012	DIMENSION STYLE	SCALE	DESIGN UNITS	THIRD ANGLE PROJECTION	TITLE 0.5 FFC E/O DUAL CONTACT HOUSING ASS'Y MOLEX INCORPORATED SD-104060-002 SHEET NO. 2 OF 3
			mm	INCH																		
	4 PLACES		± 0.1	± 0.004																		
	3 PLACES		± 0.15	± 0.006																		
2 PLACES	± 0.2	± 0.008																				
1 PLACE	± 0.3	± 0.012																				
▽=0 ◻=0	MM ONLY	10:1	METRIC	DRAWN BY YR.KIM DATE 2009/06/26 CHECKED BY KS.KIM DATE 2009/06/26 APPROVED BY YSOO.KIM DATE 2009/06/26 MATERIAL NO. SEE TABLE	DRAWN BY YR.KIM DATE 2009/06/26 CHECKED BY KS.KIM DATE 2009/06/26 APPROVED BY YSOO.KIM DATE 2009/06/26 MATERIAL NO. SEE TABLE																	
SIZE A3	THIS DRAWING CONTAINS INFORMATION THAT IS PROPRIETARY TO MOLEX INCORPORATED AND SHOULD NOT BE USED WITHOUT WRITTEN PERMISSION																					

9 8 7 6 5 4 3 2 1



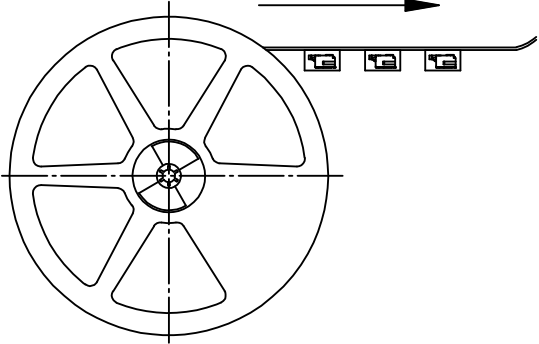
SECTION A-A'



SECTION B-B'
(Scale 3/1)

NOTES

1. NUMBER OF CONNECTORS : 2,400PCS/REEL
2. LEAD TAPE LENGTH
3. FOR DIMENSIONS OF PRODUCT, REFER TO SD-104060-001.
4. MATERIAL
 CARRIER TAPE : POLYETHYLENE TEREPHTHALATE
 TOP TAPE : POLYETHYLENE TEREPHTHALATE , POLYETHYLENE
 REEL : POLYSTYRENE<RECYCLE MATERIAL CONTAINED>
5. ELV AND RoHS COMPLIANT
6. PEELING OFF FORCE OF COVER TAPE : 0.1N~0.59N(10.2GF~60GF)
 (PEELING DIRECTION AS SHOW IN FOLLOW FIG.)
 PEELING OFF SPEED : 300mm/Min.(Ref.)



24	104060-2017	20
CARRIER TAPE WIDTH	ORDER NO.	CIRCUIT

REVISED EC NO: KOR2013-0042 DRW:NHJEONG 2013/05/30 CHKD: APPR:YSKIM02 2013/05/30 REV DESCRIPTION	QUALITY SYMBOLS	GENERAL TOLERANCES (UNLESS SPECIFIED)	DIMENSION STYLE	SCALE	DESIGN UNITS	THIRD ANGLE PROJECTION
	▽=0	mm INCH	MM ONLY	10:1	METRIC	☉
	∇=0	4 PLACES ± --- ± ---	DRAWN BY DATE	TITLE		
		3 PLACES ± --- ± ---	YR.KIM 2009/06/26	0.5 FFC E/O DUAL CONTACT HOUSING ASS'Y		
	2 PLACES ± --- ± ---	CHECKED BY DATE	MOLEX MOLEX INCORPORATED			
	1 PLACE ± 0.3 ± ---	KS.KIM 2009/06/26	DOCUMENT NO.			
	ANGULAR ± 1 °	APPROVED BY DATE	SD-104060-002			
		YSOO.KIM 2009/06/26	SHEET NO.			
		MATERIAL NO.	3 OF 3			
	DRAFT WHERE APPLICABLE MUST REMAIN WITHIN DIMENSIONS	SEE TABLE	THIS DRAWING CONTAINS INFORMATION THAT IS PROPRIETARY TO MOLEX INCORPORATED AND SHOULD NOT BE USED WITHOUT WRITTEN PERMISSION			