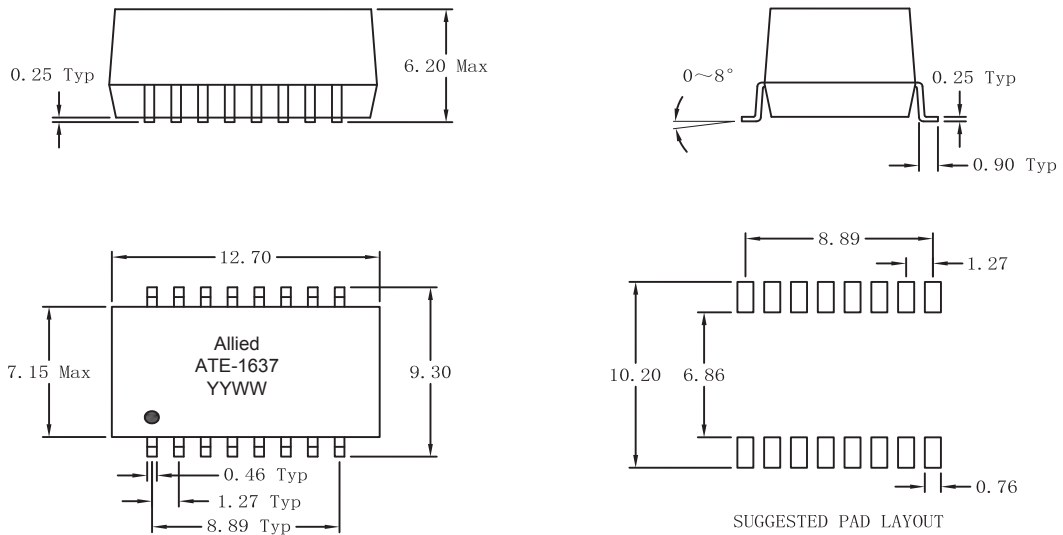


- T1/CEPT/ISDN Line Interface
- Standard Operating Temperature: -0°C to +70°C
- Maximum reflow temperature: 245°C, 5 Sec.

Electrical Specifications @25°C						
Turn Ratio Pri : Sec ±5%	OCL (mH Min)	Leakage Inductance (μH Max)	Primary Pins	DCR (Ω Max)	CW/W (pF Max)	HI-POT (Vrms)
1CT : 2.42CT	1.2	0.6	(1 - 3), (6 - 8)	0.7	25	1500

All specifications subject to change without notice.

**MECHANICAL**



**SCHEMATICS**

