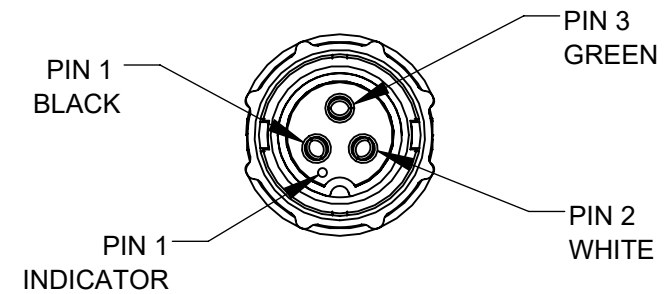


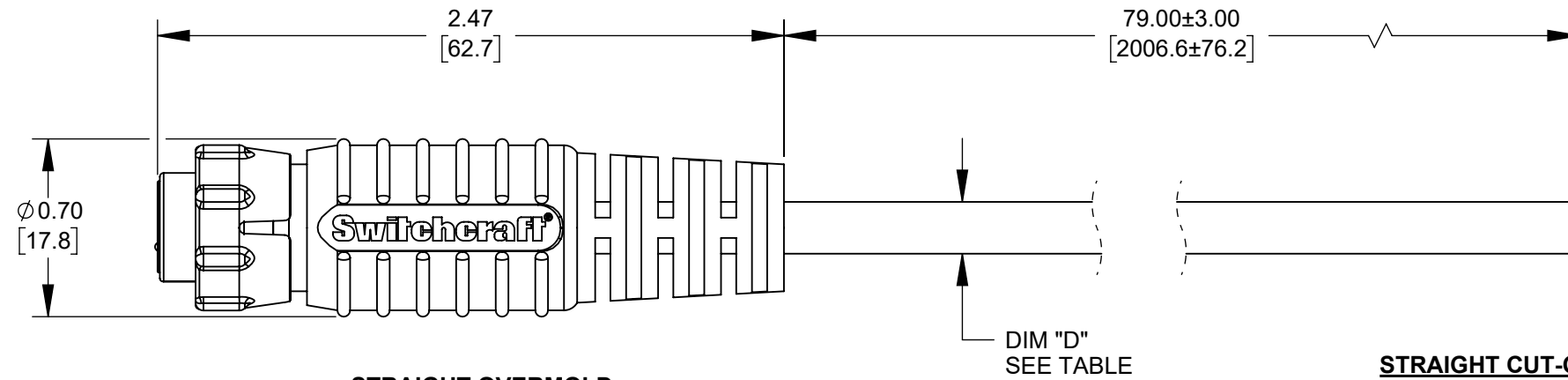
**CAEN3C2F1607990**  
2-PIN FEMALE

2 CONDUCTOR  
16 AWG CABLE  
BLACK PVC



**CAEN3C3F1607990**  
3-PIN FEMALE

3 CONDUCTOR  
16 AWG CABLE  
BLACK PVC



**STRAIGHT OVERMOLD**  
**FEMALE EN3C - 16GA CONTACTS**  
OVERMOLD - THERMOPLASTIC, BLACK  
CONNECTOR - THERMOPLASTIC, BLACK  
CONTACTS - COPPER ALLOY, GOLD PLATED

**STRAIGHT CUT-OFF**

PART NUMBER	NUMBER OF CONTACTS	DIM "D" CABLE DIAMETER
CAEN3C2F1607990	2	Ø 0.204 [5.18] REF
CAEN3C3F1607990	3	Ø 0.275 [6.99] REF

**CUSTOMER DRAWING**

**NOTES:**

1. THIS PRODUCT IS RoHS COMPLIANT.

					THIS DRAWING DESCRIBES A DESIGN CONSIDERED PROPRIETARY IN NATURE, DEVELOPED AND MANUFACTURED BY SWITCHCRAFT INC. AND IS RELEASED ON A CONFIDENTIAL BASIS FOR IDENTIFICATION PURPOSES ONLY.				
					SIZE	WIDTH	MULT	LBS/M	TEMPER
					FINISH			MATERIAL	
					SPEC No.			SPEC No.	
					FIRST USED ON		SCALE		
							3:2		
DATE DRAWN		BY	CHKD	APVD					
8-27-21		CC	CC	TJK					
			8-27-21	10-7-21	SHEET 1 OF 1				
REV					NAME			PART No.	
ECO NUMBER					FEMALE EN3C OVERMOLDED TO 16 AWG CABLE, SCO			CAEN3C_F1607990	
DATE					REV				
BY					A				
APVD									
REVISIONS					DO NOT SCALE DRAWING				