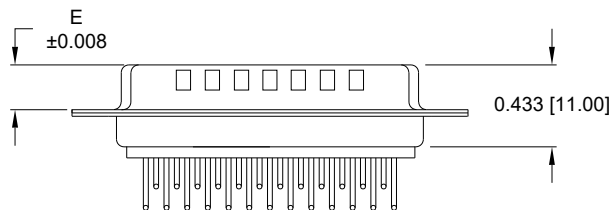
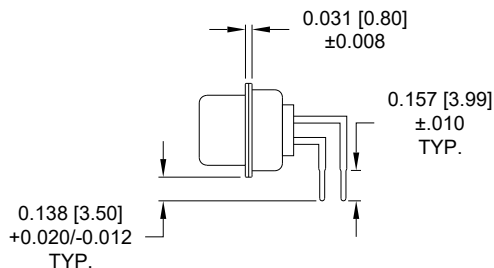
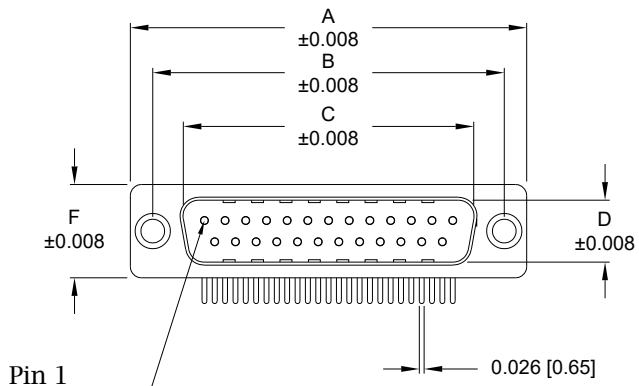


Description: 0.370" Right Angle / Machined

Dimensions (inch/mm)

Pins	A	B	C	D	E	F
9	1.213	0.984	0.665	0.327	0.240	0.492
	30.80	25.00	16.90	8.30	6.10	12.50
15	1.543	1.311	0.994	0.327	0.240	0.492
	39.20	33.30	25.25	8.30	6.10	12.50
25	2.089	1.852	1.533	0.327	0.240	0.492
	53.05	47.05	38.95	8.30	6.10	12.50



Meets IP67 Standards

(See page 3 for sealing details)

Material:

- Shell: Nickel Plated Steel
- Insulator: UL 94V-O Rated, White PA6T
- Process Temperature: 260°C
- Contact: Precision Machined Copper Alloy
- Seal: Flexible F08 Adhesive

Electrical:

- Current Rating: 5 AMPS
- Contact Resistance: 10 mOhms Max.
- Insulation Resistance: 5 GOhms Min.
- Working Voltage: 250V
- Temperature: -55° C TO +125° C

7 7 4 - E Y Y - 1 1 Y R Y Y 1

Series
E09
E15
E25

Gender
1 = Male

Termination
1 = PCB Mounting

Shell Plating
3 = Nickel

RoHS Compliant

Hardware Options
00 = No Hardware
01 = 0.098" Clinch Nut (Board Side)
14 = Standard Bracket with 4-40 Screwlock
24 = Standard Bracket with 4-40 Captive Screw
46 = Boardlock Bracket with 4-40 Insert

Plating Options
1 = Gold Flash
2 = 30μ" Gold
3 = 50μ" Gold

RoHS COMPLIANT

UNITS = inch [mm]

DO NOT SCALE FROM DRAWING



THESE DRAWINGS AND SPECIFICATIONS ARE THE PROPERTY OF NorComp AND SHALL NOT BE REPRODUCED, COPIED OR USED AS THE BASIS FOR THE MANUFACTURE OR SALE OF APPARATUS WITHOUT WRITTEN PERMISSION.

DRAWN:
C. Smith

DATE:
03/26/2009

NorComp

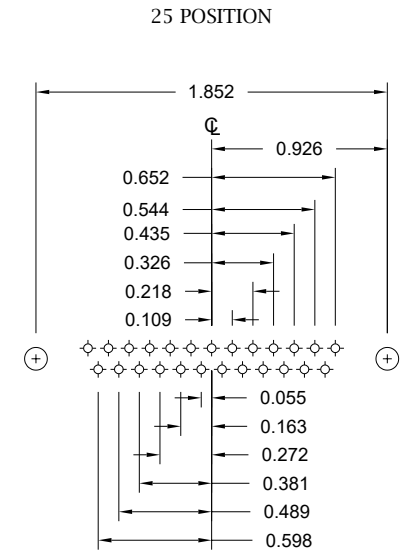
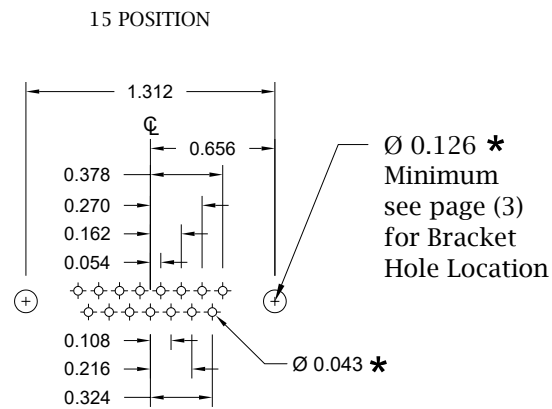
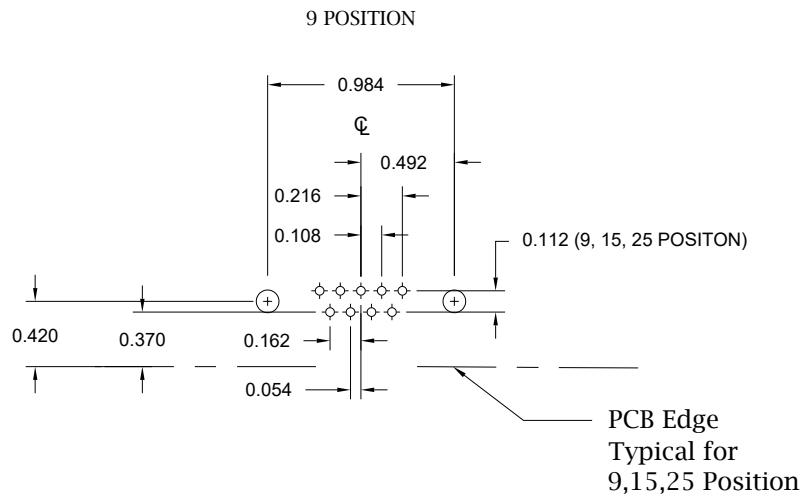
SCALE:
NTS

SHEET 1 OF 4

REV 11

DWG NO.

774-EYY-11YRY1



* Typical Suggested Size
May Not Be Suitable For All Applications

UNITS = inch

DO NOT SCALE FROM DRAWING



THESE DRAWINGS AND SPECIFICATIONS ARE THE PROPERTY OF NorComp AND SHALL NOT BE REPRODUCED, COPIED OR USED AS THE BASIS FOR THE MANUFACTURE OR SALE OF APPARATUS WITHOUT WRITTEN PERMISSION.

DRAWN:
C. Smith

DATE:
03/26/2009

NorComp

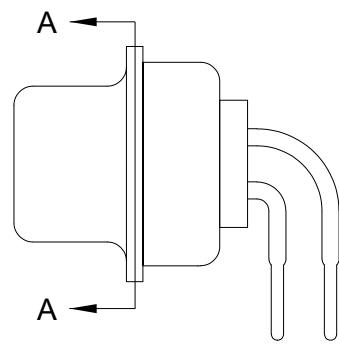
SCALE:
NTS

SHEET OF
2 4

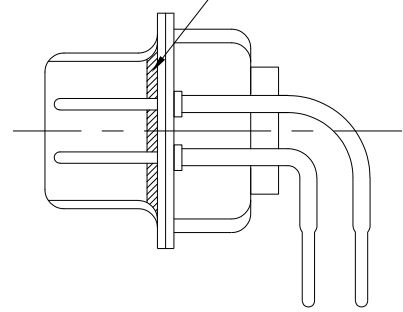
REV
11

DWG NO.

774-EYY-11YRY1



FRONT SEAL APPLIED OVER INSULATOR
AND BETWEEN FRONT & REAR SHELLS



DETAIL A-A

RoHS COMPLIANT

DO NOT SCALE FROM DRAWING



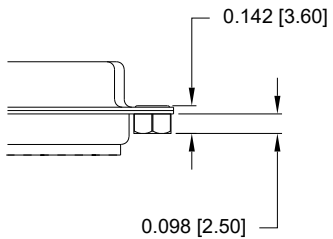
THESE DRAWINGS AND SPECIFICATIONS ARE THE PROPERTY OF NorComp AND SHALL NOT BE REPRODUCED, COPIED OR USED AS THE BASIS FOR THE MANUFACTURE OR SALE OF APPARATUS WITHOUT WRITTEN PERMISSION.

DRAWN:
C. Smith
DATE:
03/26/2009

NorComp

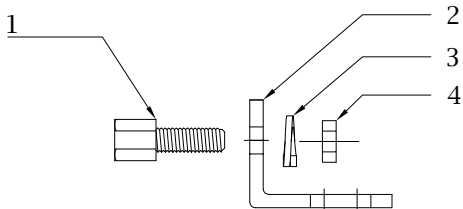
SCALE: NTS	SHEET 3 OF 4	REV 11
DWG NO. 774-EYY-11YRYY1		

01 Hardware Option
0.098" Clinch Nut (Board Side)



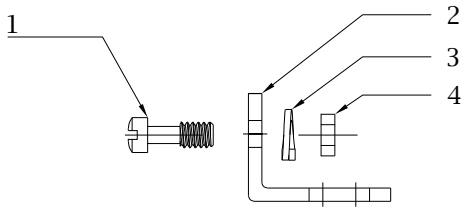
Clinch Nut has 4-40 Internal Threads

14 Hardware Option		
	Description	NorComp Part Number
1	4-40 Screwlock	SFSO4401NR
2	Bracket	K501CZ
3	Lock Washer	LWIT
4	4-40 Nut	N4401N



**Search Hardware Part Number To Obtain Technical Specifications.

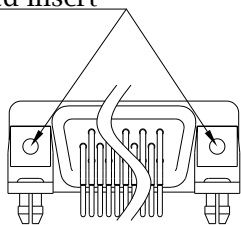
24 Hardware Option		
	Description	NorComp Part Number
1	4-40 Captive Screw	SSH4401T
2	Bracket	K501CZ
3	Lock Washer	LWIT
4	4-40 Nut	N4401N



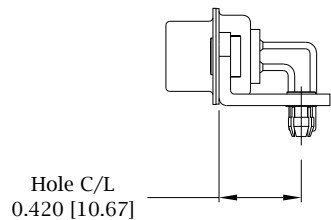
**Search Hardware Part Number To Obtain Technical Specifications.

46 Hardware Option
Boardlock Bracket and 4-40 Insert

#4-40 Threaded Insert



9-25 Position Connector Boardlock Bracket



Boardlock Brackets Come Assembled On Connector

Recommend max torque for all options => 40 in-oz

RoHS COMPLIANT

UNITS = inch [mm]

DO NOT SCALE FROM DRAWING



THESE DRAWINGS AND SPECIFICATIONS ARE THE PROPERTY OF NorComp AND SHALL NOT BE REPRODUCED, COPIED OR USED AS THE BASIS FOR THE MANUFACTURE OR SALE OF APPARATUS WITHOUT WRITTEN PERMISSION.

DRAWN:
C. Smith
DATE:
03/26/2009

NorComp

SCALE: NTS	SHEET 4	OF 4	REV 11
DWG NO.			774-EYY-11YRY1