

Materials and Finish

Housing Material-
 High Temp material
 UL 94V-0 Rated
 Color: Black

Reflow Process Compatible

Contact Material-
 Phosphor Bronze

Contact Plating Options-
 Standard: 0.0001" Nickel
 Plating, Selective Plating
 Gold Flash on Contact
 Area tin on termination end

50: 0.0001" Nickel Plating,
 Selective Plating 0.000050"
 Gold on Contact Area to
 Comply with FCC Requirements
 Under No. 47 C.F.R. Part 68,
 Subpart F tin on termination end

Electrical Characteristics

Current Rating-
 1.0 Amps

Voltage Rating-
 125V DC

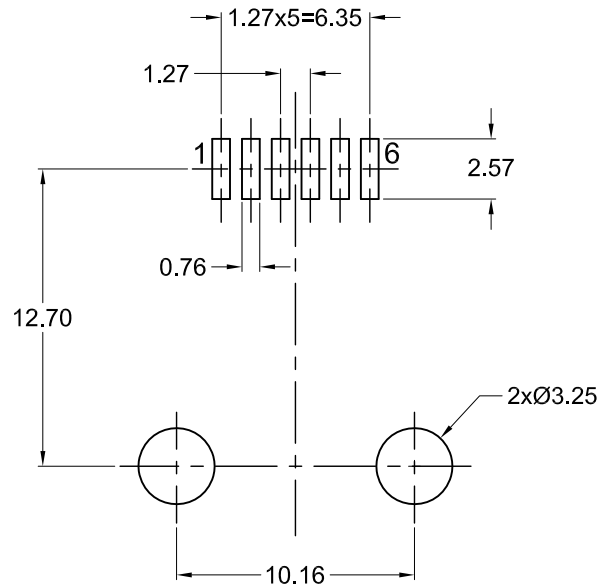
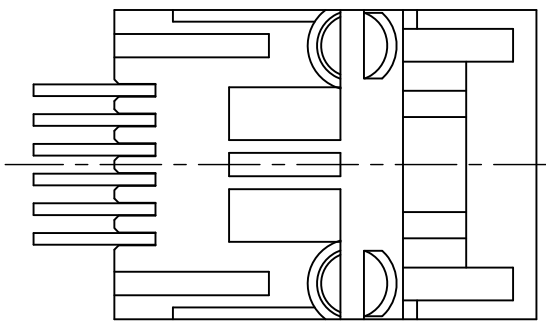
Insulation Resistance-
 500 Megohms Min.

Dielectric Withstanding Voltage-
 1000V rms, 60Hz

Contact Resistance-
 20 milliohms Max.

Operating Temperature-
 -40°C to +85°C

Durability Rating-
 500 mating cycles min.



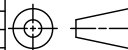
Recommended PCB Layout
 (Top View)

Part Number	Contact Area Plating Finish
GDLX-SMT-N-66	Gold Flash (standard)
GDLX-SMT-N-66-50	50u" Gold (50 option)

Tolerances
X.X ± 0.25
X.XX ± 0.15
Unless Stated Otherwise



REV.	DATE	DESCRIPTION	REV. BY	CHK. BY	DRAWN BY	DATE
A1	07/08/05	New Drawing	R. Aguirre	H. MA	R. Aguirre	05/19/05
A2	05/03/10	ECO #10-020	S. Vien	H. MA		
A3	11/06/13	ECO #13-084	W. Cook	H. MA		
A4	04/16/15	ECO #15-001	H. MA	C. Furumasu		
A5	05/23/17	ECO #17-014	H. MA	C. Furumasu		



GDLX-SMT-N-66

Modular Jack, Right angle, SMT

RoHS Compliant, 6 Pos, 6 Contacts, non-shielded

